

## Supplemental Online Content

Turri G, Martinelli L, Rega D et al. Predictors of recurrence after curative surgery for stage I colon cancer. Retrospective cohort analysis of the Italian Society of Surgical Oncology Colorectal Cancer Network Collaborative Group.

**Corresponding author.** Prof. Corrado Pedrazzani, Division of General and Hepatobiliary Surgery, Department of Engineering for Innovation Medicine, Verona University Hospital, Piazzale L. Scuro 10, 37134 Verona, Italy. Tel: ++39 (0)45 8126719; Fax: ++39 (0)45 8027426; E-mail: [corrado.pedrazzani@univr.it](mailto:corrado.pedrazzani@univr.it)  
**ORCID ID:** [0000-0003-2431-6117](https://orcid.org/0000-0003-2431-6117)

### Index

#### Supplementary Figures and Tables

Supplementary Table 1	<i>pag. 2</i>
Supplementary Table 2	<i>pag. 2</i>
Supplementary Table 3	<i>pag. 3</i>
Supplementary Figure 1	<i>pag. 4</i>
Supplementary Figure 2	<i>pag. 5</i>
Supplementary Figure 3	<i>pag. 6</i>
Supplementary Figure 4	<i>pag. 7</i>

**Supplementary Table 1.** Frequency of sites of recurrence and corresponding treatment.

Site of Recurrence	N (%)	Treatment of recurrence (%)			
		CHT	RT	Surgery	Missing
Liver	35 (43.8%)	9 (25.7%)	1 (2.9%)	18 (51.4%)	7 (20.0%)
Lung	13 (16.3%)	5 (38.5%)	1 (7.7%)	3 (23.1%)	4 (30.8%)
Locoregional/Anastomosis	8 (10.0%)	0 (0.0%)	0 (0.0%)	7 (87.5%)	1 (12.5%)
Peritoneal/Ovary	2 (2.5%)	0 (0.0%)	0 (0.0%)	2 (100.0%)	0 (0.0%)
Multiple Sites	8 (10.0%)	6 (75.0%)	0 (0.0%)	1 (12.5%)	1 (12.5%)
Other/Unknown	14 (17.5%)	1 (7.1%)	1 (7.1%)	7 (50.0%)	5 (35.7%)

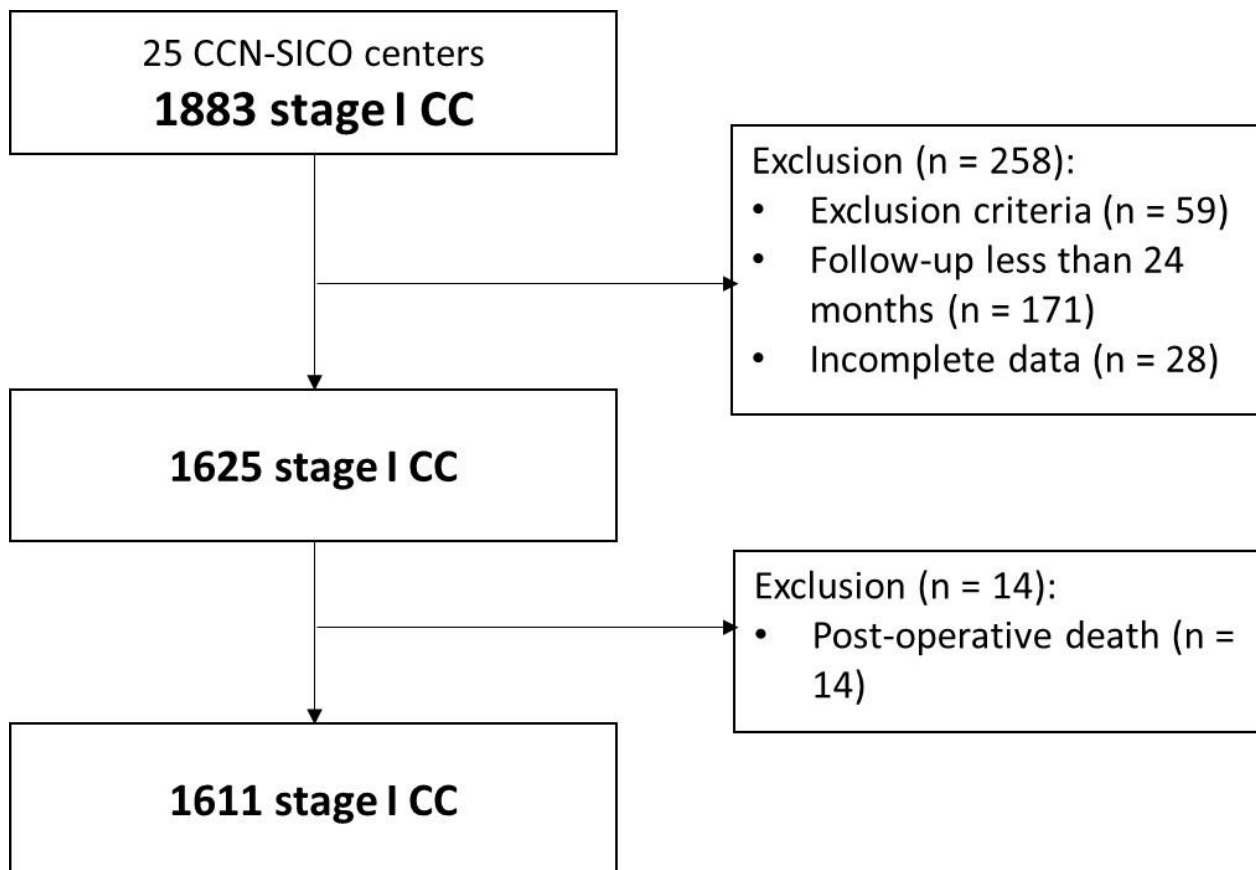
**Supplementary Table 2.** Influence of individual, tumor and surgical characteristics on tumor recurrence in the first 2 years of follow-up. Hazard ratios and p values were obtained by univariable and multivariable Cox regression model.

Characteristics	Unadjusted Haz. Ratio [95% conf. interval]	Unadjusted p-value	Adjusted Haz. ratio [95% conf. interval]	Adjusted p-value
Gender (Women vs Men)	0.66 (0.36-1.18)	0.162	0.73 (0.36-1.48)	0.382
Age	0.80 (0.56-1.14)	0.223	0.98 (0.95-1.02)	0.357
Charlson index				
Score<4	1 (reference)		1 (reference)	
Score>4	1.16 (0.65-2.09)	0.614	0.96 (0.40-2.27)	0.919
Missing	1.15 (0.34-3.87)	0.817	0.51 (0.13-2.04)	0.340
pT (pT2 vs pT1)	4.43 (1.88-10.41)	<b>0.001</b>	2.84 (1.05-7.71)	<b>0.040</b>
Tumor diameter				
≤20 mm	1 (reference)		1 (reference)	
21-30 mm	3.09 (0.97-9.84)	0.057	2.47 (0.60-10.15)	0.209
31-40 mm	3.08 (0.93-10.22)	0.066	3.24 (0.90-12.97)	0.097
>40 mm	5.41 (1.74-16.77)	<b>0.003</b>	5.73 (1.51-21.78)	<b>0.010</b>
Missing	3.32 (1.09-10.07)	<b>0.034</b>	2.65 (0.67-10.53)	0.166
LVI (Yes vs No)	2.37 (1.22-4.61)	<b>0.011</b>	2.38 (1.15-4.91)	<b>0.019</b>
CEA level (>5 vs ≤5)	2.58 (1.22-5.44)	<b>0.013</b>	3.19 (1.28-7.95)	<b>0.013</b>
Missing	1.03 (0.54-1.96)	0.926	1.11 (0.49-2.53)	0.800
Nodes Retrieved >12 (Yes vs No)	0.62 (0.33-1.19)	0.150	0.31 (0.15-0.65)	<b>0.002</b>
Type of resection Partial	2.99 (1.34-6.66)	<b>0.007</b>	1.47 (0.34-6.44)	0.607

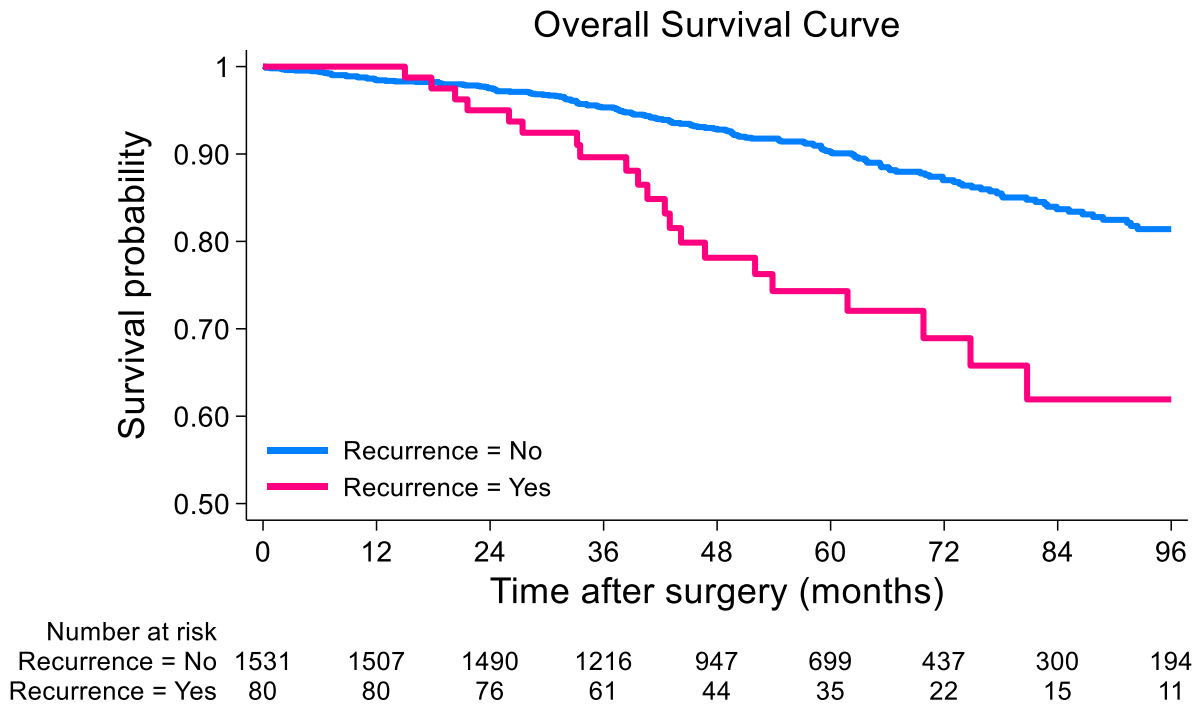
**Supplementary Table 3.** Collinearity Diagnostics of variables included in multivariable proportional hazards Cox model. Low variance inflation factors are indicative of absence of multicollinearity in our multivariable model.

<b>Variable</b>	<b>VIF</b>
<b>Gender</b>	1.01
<b>Age</b>	1.27
<b>Charlson index</b>	1.26
<b>pT</b>	1.05
<b>Tumor diameter</b>	1.05
<b>LVI</b>	1.01
<b>CEA</b>	1.03
<b>Nodes retrieved</b>	1.04
<b>Type of resection</b>	1.01

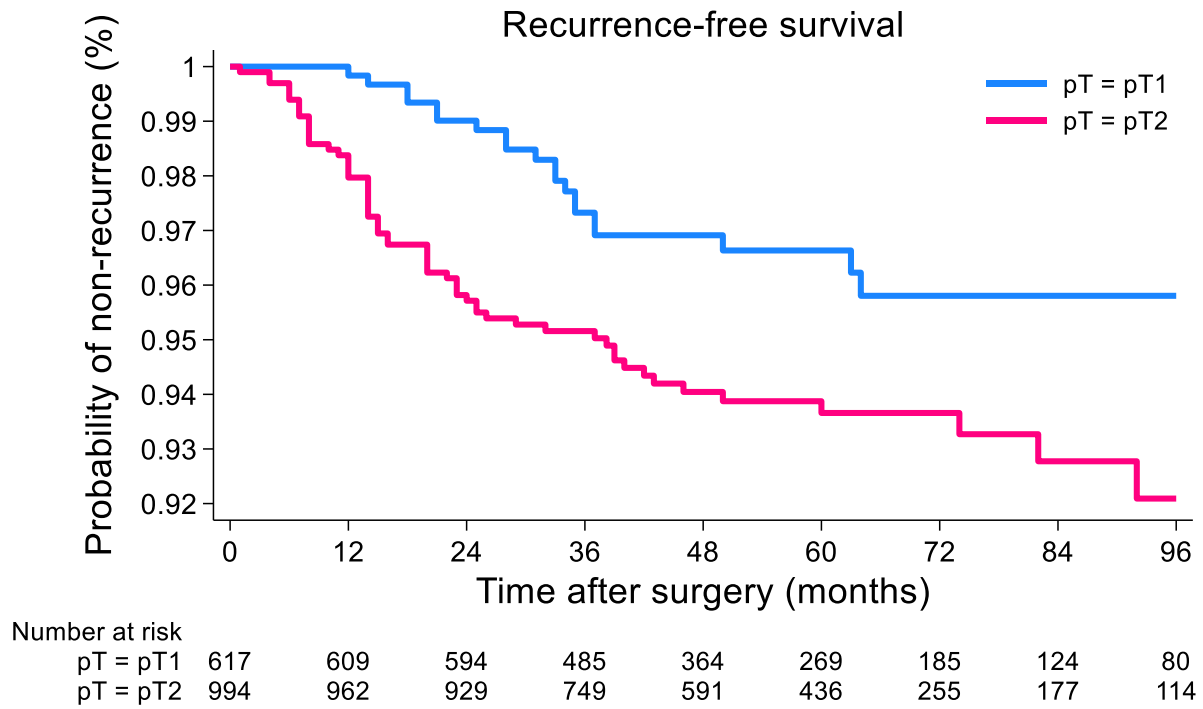
**Supplementary Figure 1.** PRISMA flow-chart illustrating data collection and selection.



**Supplementary Figure 2.** Kaplan-Meier estimates of OS for patients with and without colorectal cancer recurrence ( $p < 0.001$ ).



**Supplementary Figure 3.** Kaplan Meier estimates of RFS for patients with pT1 vs. pT2 colorectal cancer (p=0.006).



**Supplementary Figure 4.** Hazard rates of colorectal cancer recurrence for patients with pT1 vs pT2 colorectal cancer.

