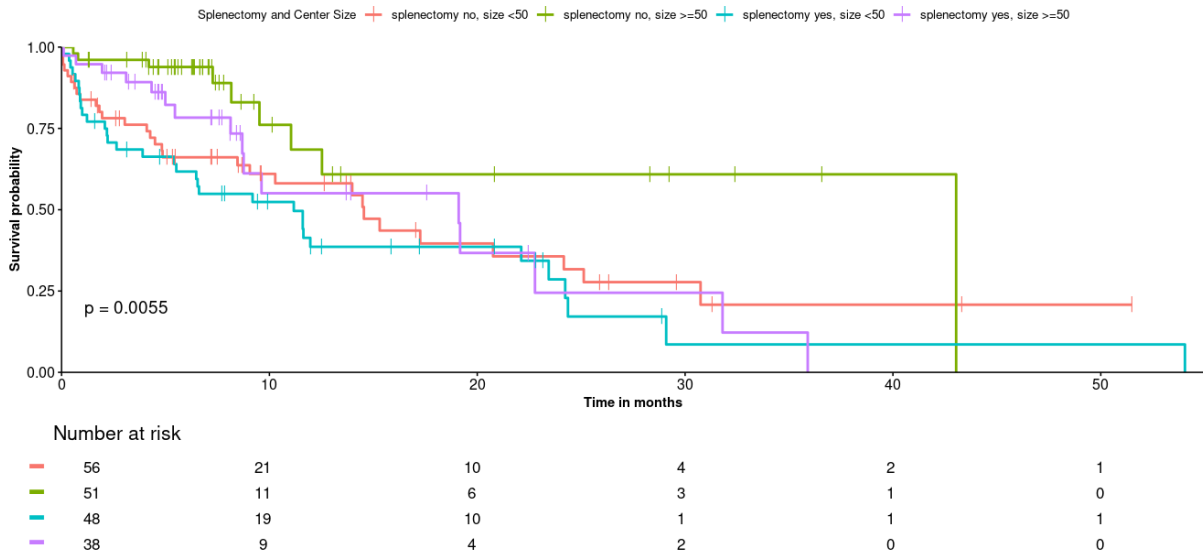


Supplementary Material

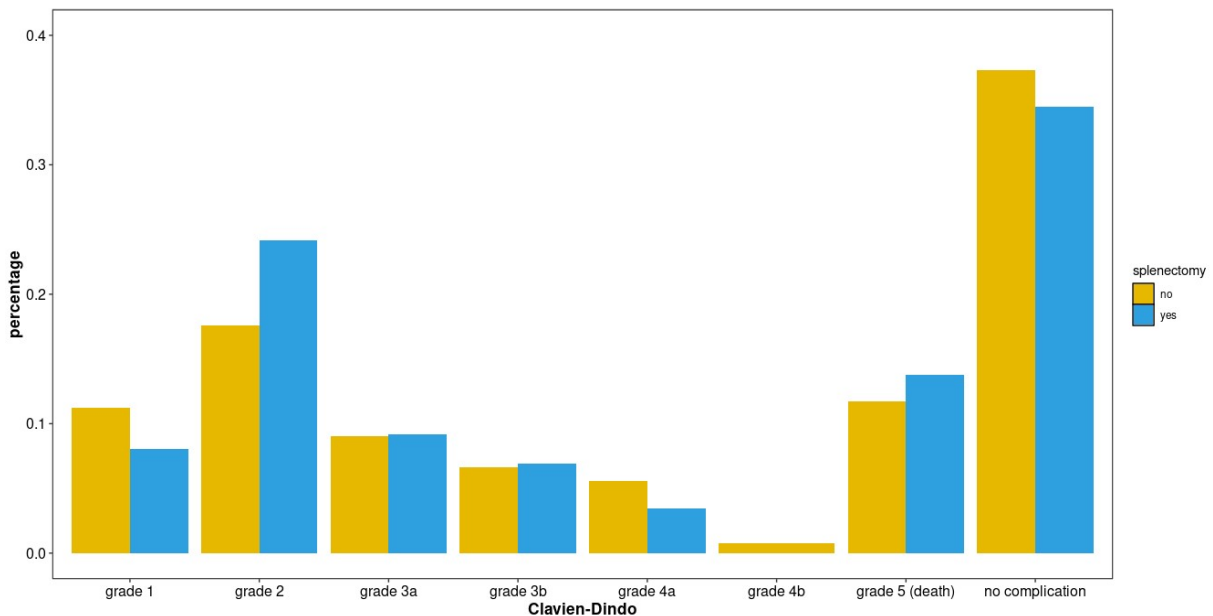
Supplementary Figure 1

A - Total and Distal Pankreatectomy



Survival analysis of splenectomy in combination with center size. The Kaplan-Meier curves illustrate, that patients have the best prognosis in high volume centers (≥ 50 cases/year). However, for both center volumes, spleen preservation remains an independent factor for a better outcome of the patient.

Supplementary Figure 2



Comparison of **postoperative** morbidity and mortality based on Clavien Dindo Classification in the splenectomy and spleen-preserving group. No significant differences could be found **between** the two groups.