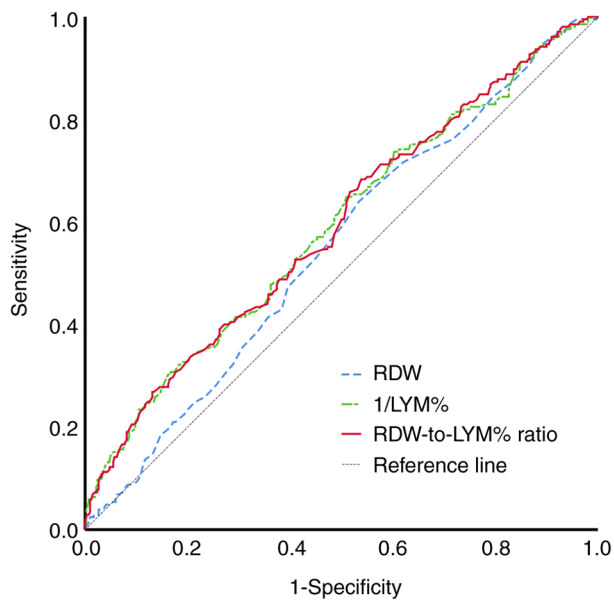


Figure S1. AUC to determine the predictive ability of cancer-specific survival according to RDW, LYM% or RDW-to-LYM% ratio. RDW-to-LYM% ratio, red cell distribution width to lymphocyte percentage ratio; AUC, area under the receiver-operating characteristic curve; CI, confidence interval.



	AUC	P-value	95% CI
RDW	0.550	0.044	0.502–0.597
1/LYM%	0.590	<0.001	0.542–0.638
RDW-to-LYM% ratio	0.592	<0.001	0.544–0.640