

Supplemental materials for

Global and regional Trends and Projections of Chronic Pain from 1990 to 2035: Analyses based on Global Burden of diseases study 2019

Mengyi Zhu, Jiarui Zhang, Diefei Liang, Junxiong Qiu, Yuan Fu, Zhaopei Zeng, Jingjun Han, Junmeng Zheng, Liling Lin

This file includes:

Figure S1: The percentages in ASPRs of seven conditions in different age groups, regions for males and females in 1990 and 2019, the trends in ASPRs of chronic pain and SDI in 21 regions for both sexes in 2019, and the trends in ASPRs of chronic pain in five different SDI regions in 2019. A): The percentage in ASPRs of seven conditions in 20 age groups for males and females in 2019; B): The percentage in ASPRs of seven conditions in 21 regions for both sexes in 1990 and 2019; C): Trends in ASPRs of chronic pain and SDI in 21 regions for both sexes in 2019; D): Trends in ASPRs of chronic pain in five SDI group regions for both sexes in 2019 and its APC.

Abbreviation: ASPR= Age-standardized YLDs rate; APC= Annual percent change; SDI= Socio-Demographic Index.

Figure S2: National distribution of Chronic pain ASPRs and AAPC for both genders in 2019 in 204 countries. A): Distribution of ASPR of chronic pain; B): Distribution of AAPC of ASPR of chronic pain.

Abbreviation: ASPR= Age-standardized YLDs rate; AAPC= Average annual percent change.

Figure S3: Trends of ASPR and ASIR of chronic pain with headache and musculoskeletal disorders for males and females in 21 regions from 2020 to 2035.

Abbreviation: ASPR= Age-standardized Prevalence rate; ASIR= Age-standardized Incidence rate.

Table S1: SDI reference quintiles

Table S2: ICD-10 Codes for Chronic Pain-Related Disorders

Table S3: Global, regional, and national numbers and ASRs of prevalence, incidence of Headache and Musculoskeletal disorders in

2019. All the supplementary tables were shown in the file “Supplemental materials.xlsx”, and were repositied at:

<https://docs.google.com/spreadsheets/d/1EILiBRd-Tb22teA7wPMSX4orM3LIyR-/edit#gid=1230282776>

Figure S1: The percentages in ASPRs of seven conditions in different age groups, regions for males and females in 1990 and 2019, the trends in ASPRs of chronic pain and SDI in 21 regions for both sexes in 2019, and the trends in ASPRs of chronic pain in five different SDI regions in 2019. A): The percentage in ASPRs of seven conditions in 20 age groups for males and females in 2019; B): The percentage in ASPRs of seven conditions in 21 regions for both sexes in 1990 and 2019; C): Trends in ASPRs of chronic pain and SDI in 21 regions for both sexes in 2019; D): Trends in ASPRs of chronic pain in five SDI group regions for both sexes in 2019 and its APC.
Abbreviation: ASPR= ASPR= Age-standardized prevalence rate; APC= Annual percent change; SDI= Socio-Demographic Index.

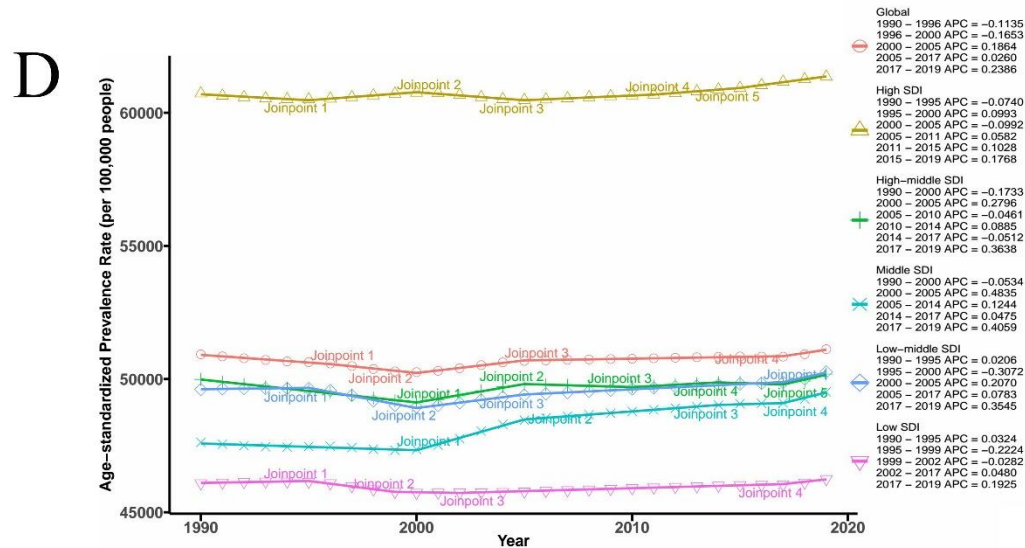
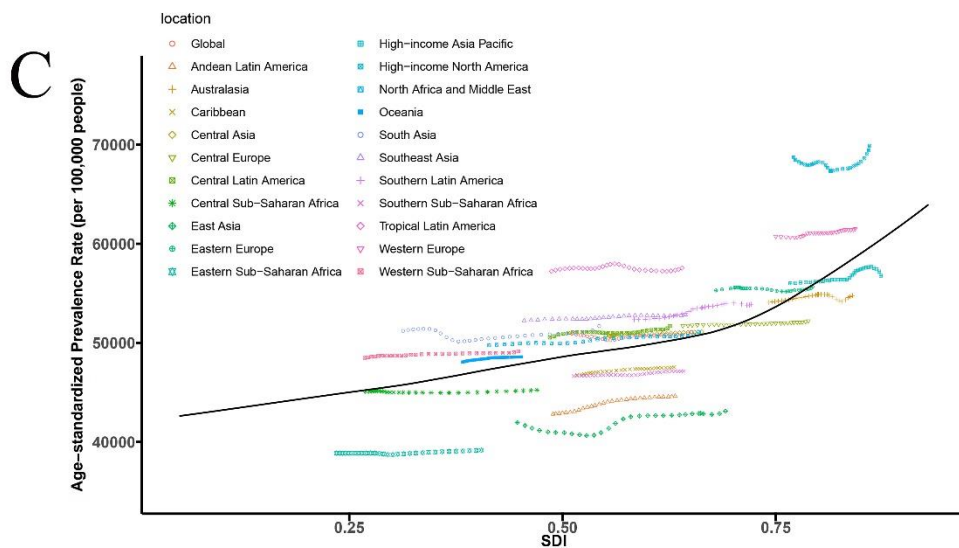
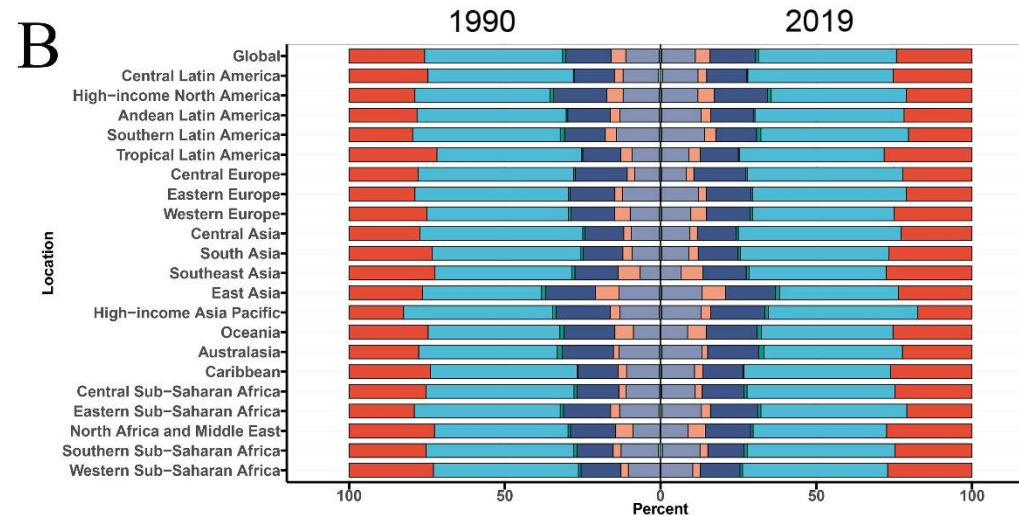
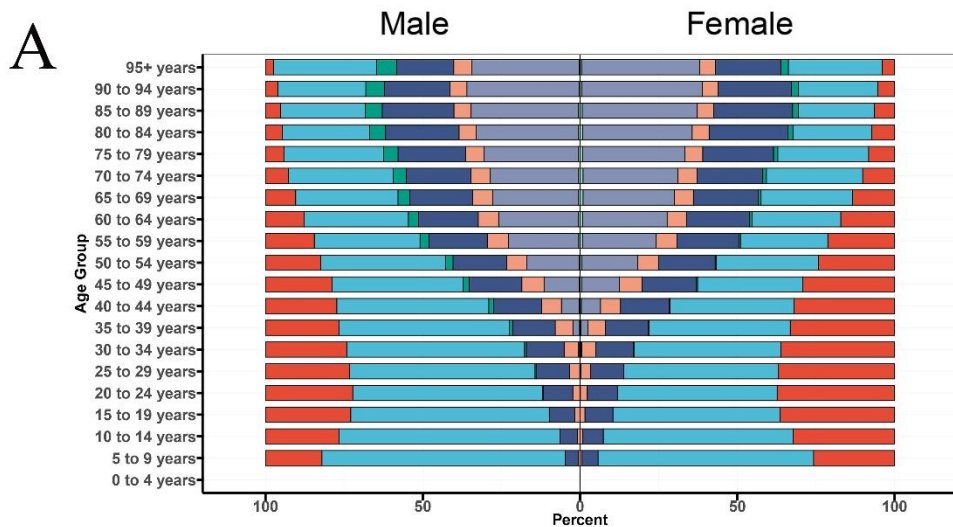
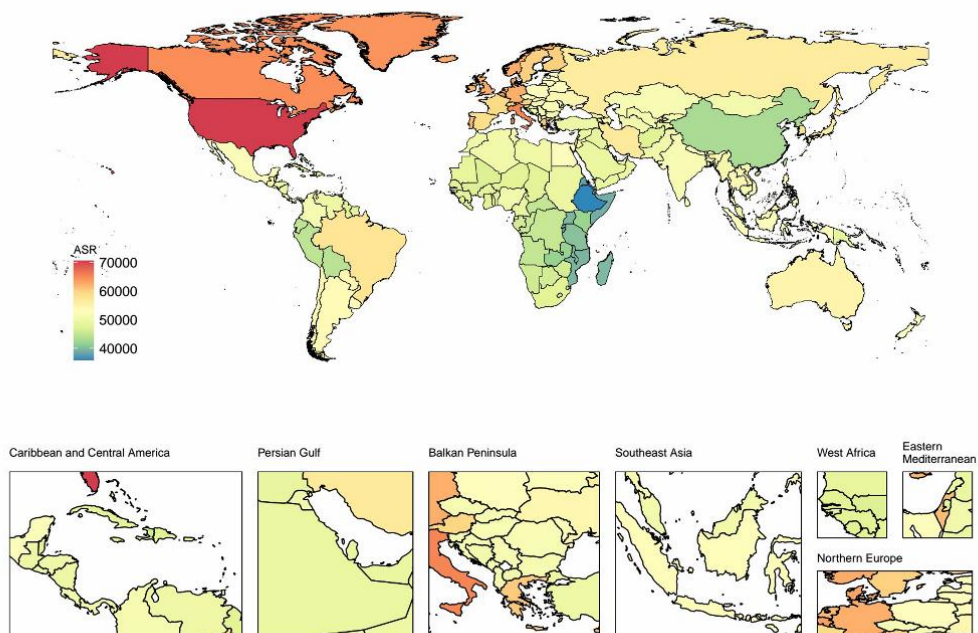


Figure S2: National distribution of chronic pain ASPRs and AAPC for both genders in 2019 in 204 countries. A): Distribution of ASPR of chronic pain; B): Distribution of AAPC of ASPR of chronic pain. Abbreviation: ASPR= Age-standardized Prevalence rate; AAPC= Average annual percent change.

A



B

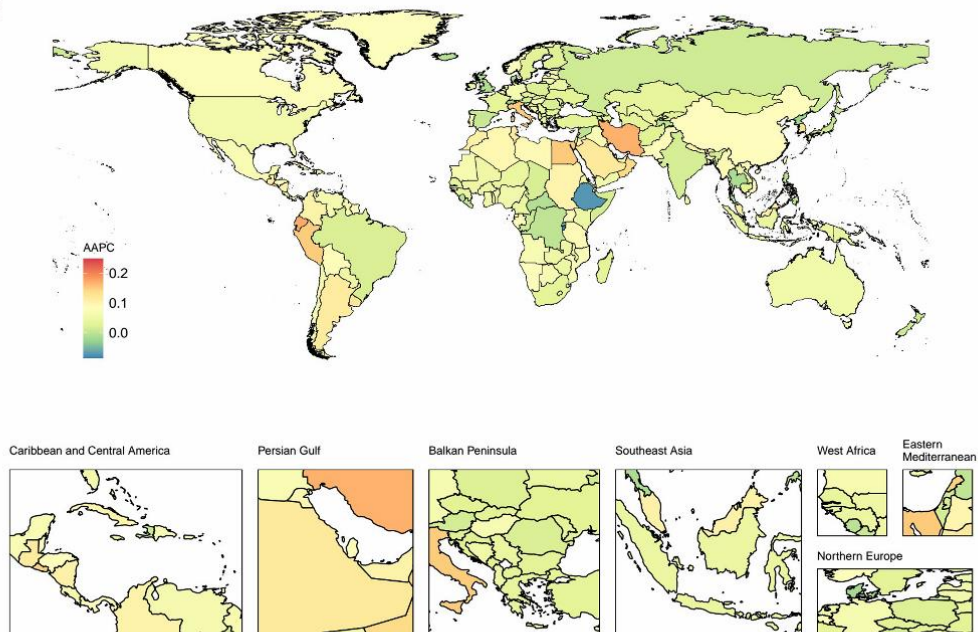
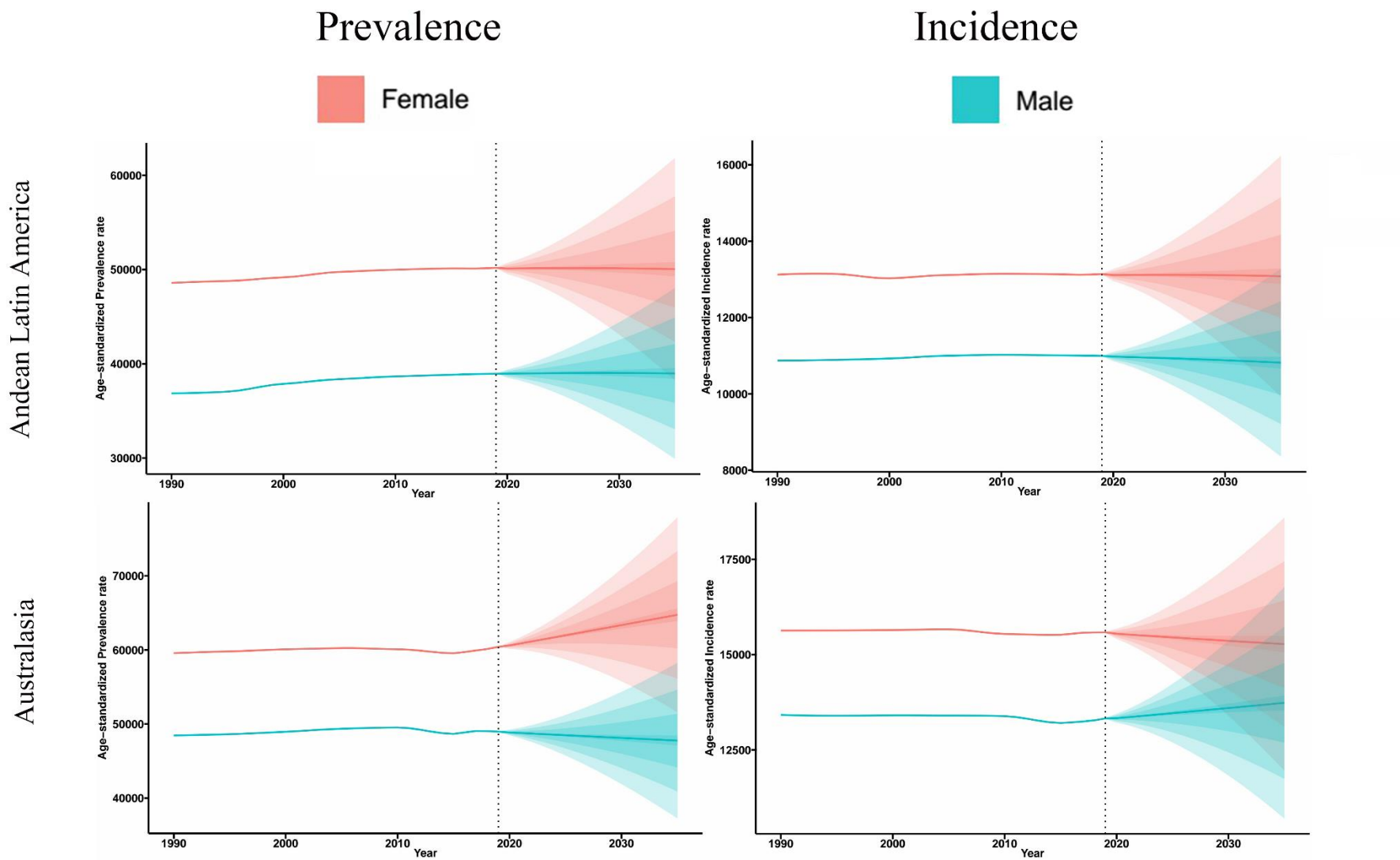
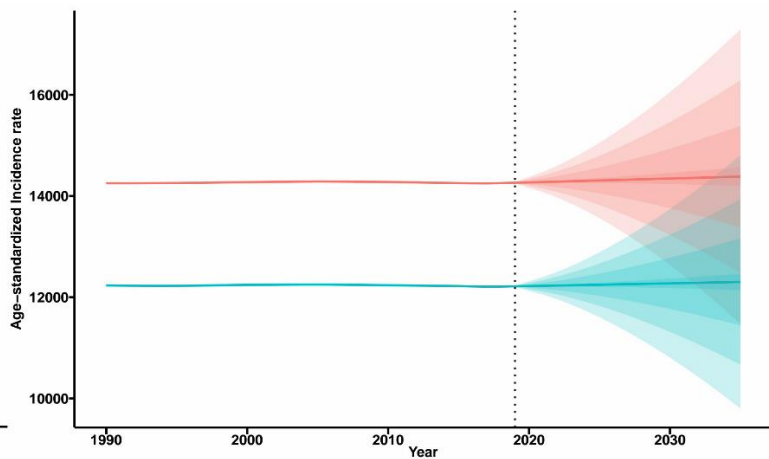
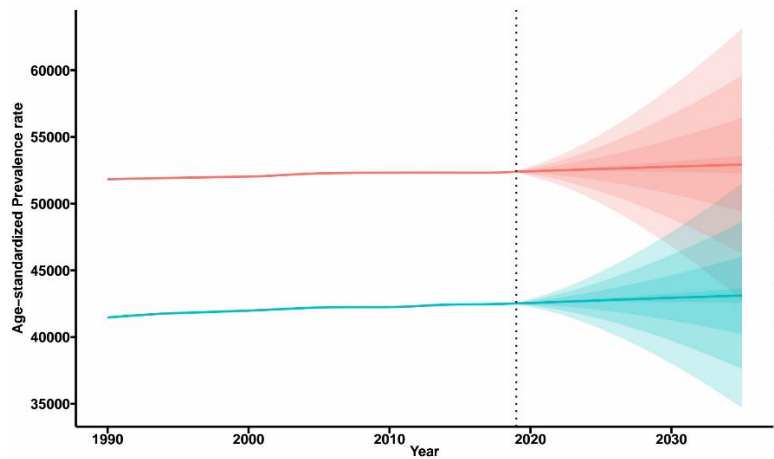


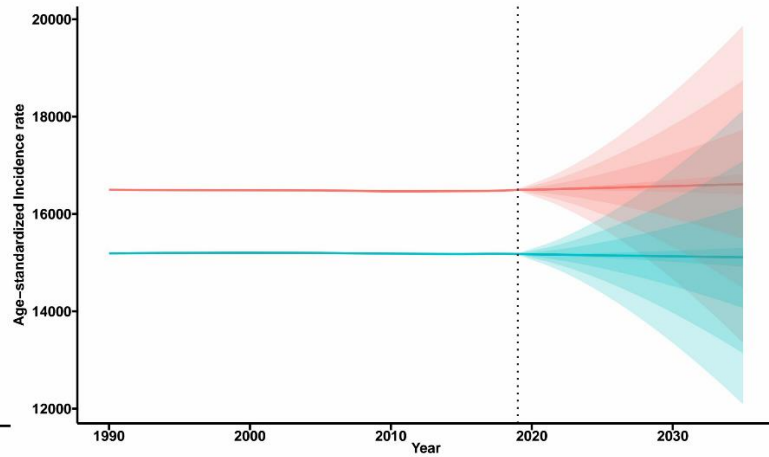
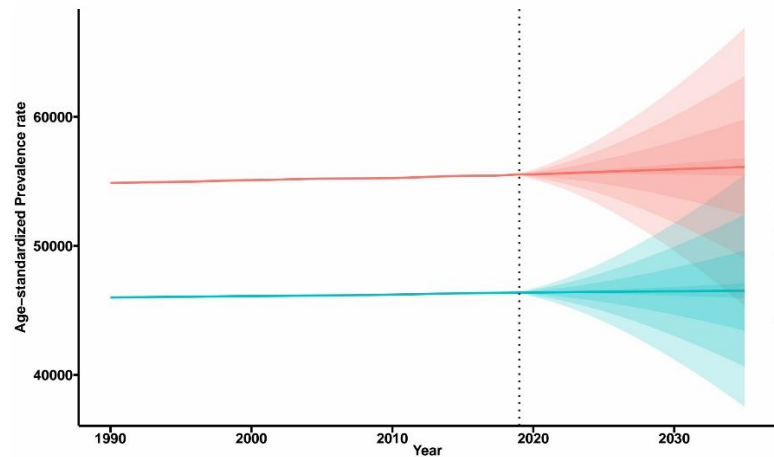
Figure S3: Trends of ASPR and ASIR of chronic pain with headache and musculoskeletal disorders for males and females in 21 regions from 2020 to 2035. Abbreviation: ASPR= Age-standardized Prevalence rate; ASIR= Age-standardized Incidence rate.



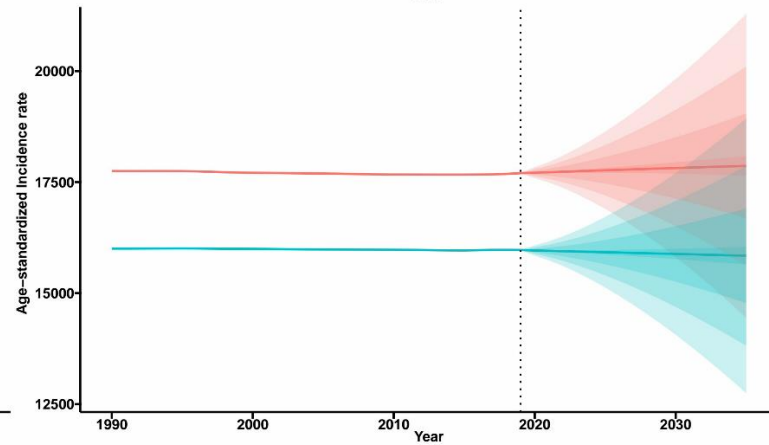
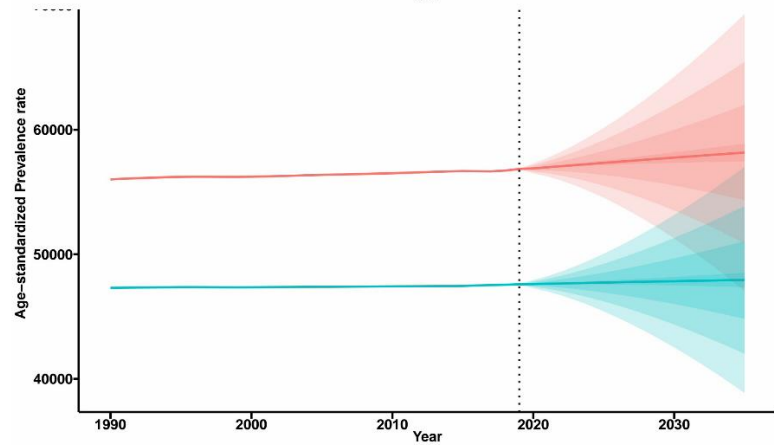
Caribbean



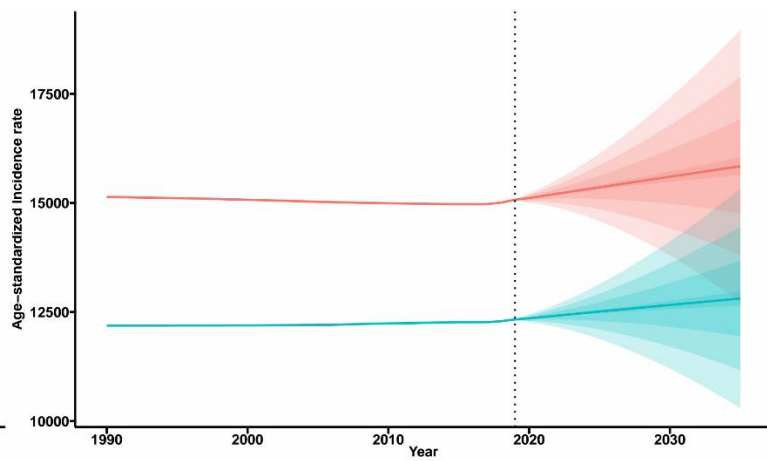
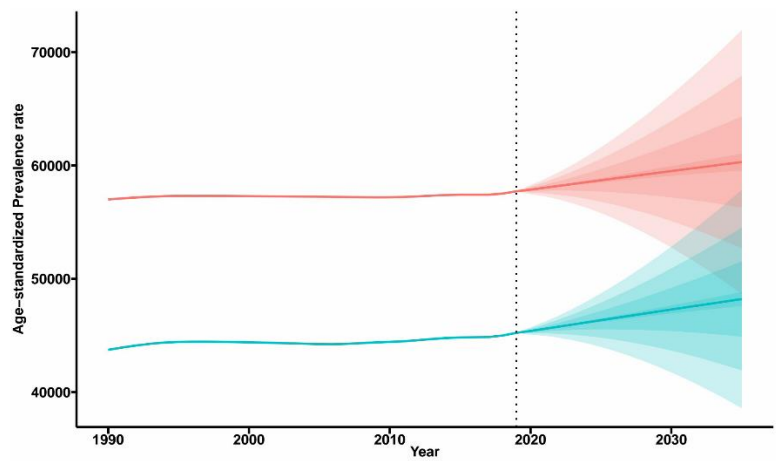
Central Asia



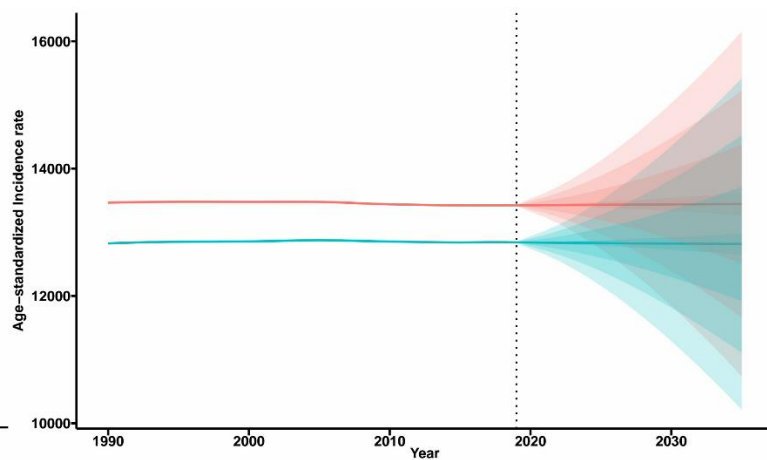
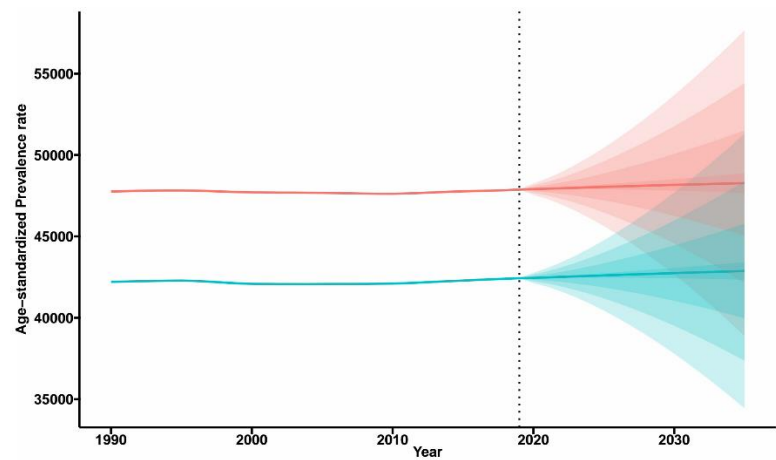
Central Europe



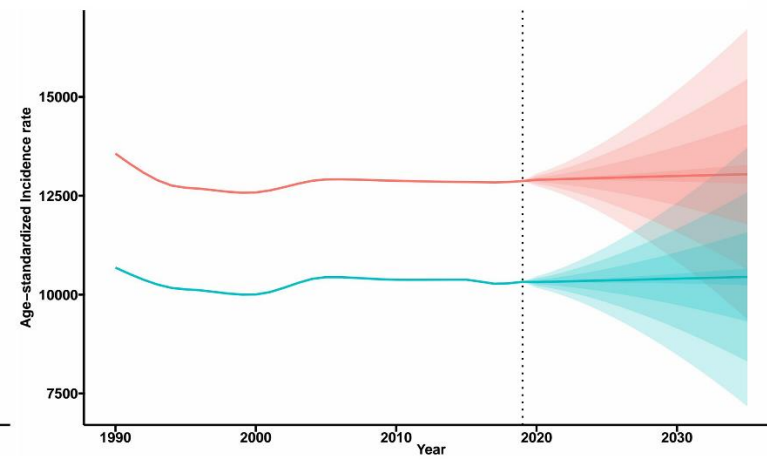
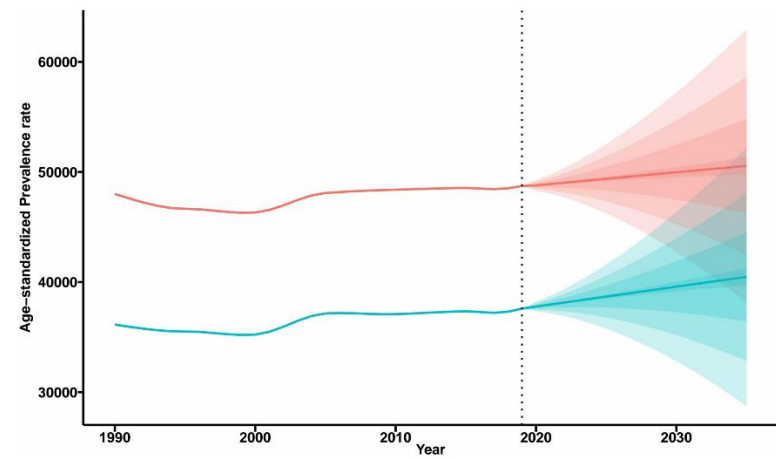
Central Latin America



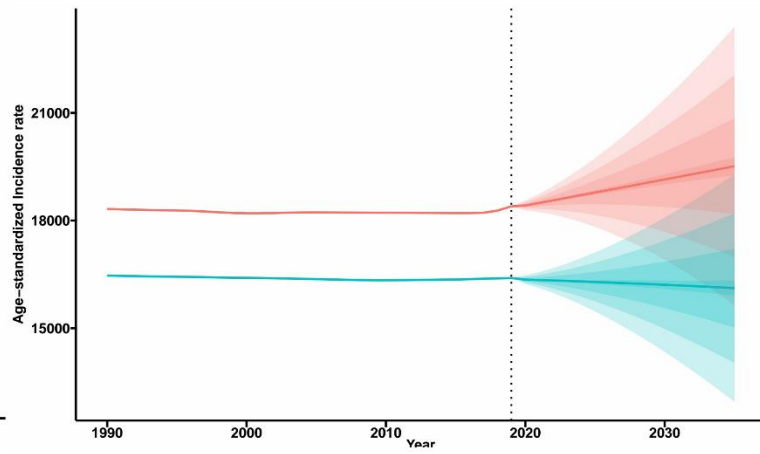
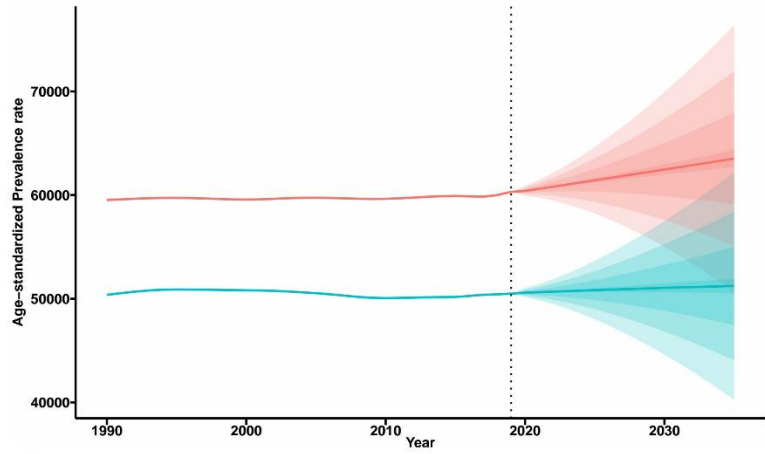
Central Sub-Saharan Africa



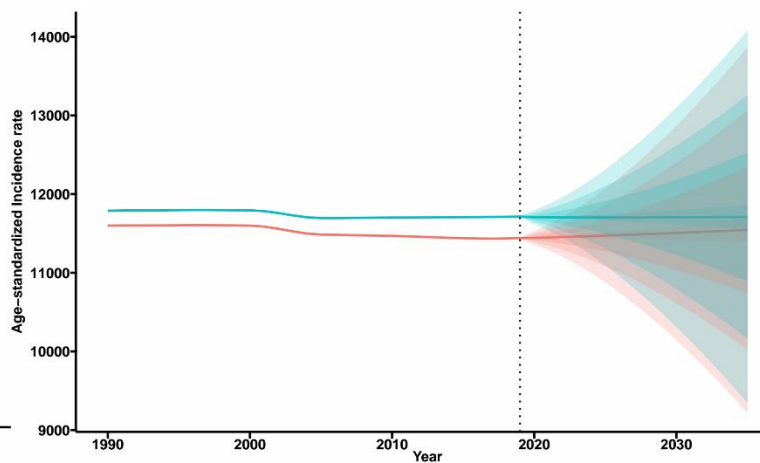
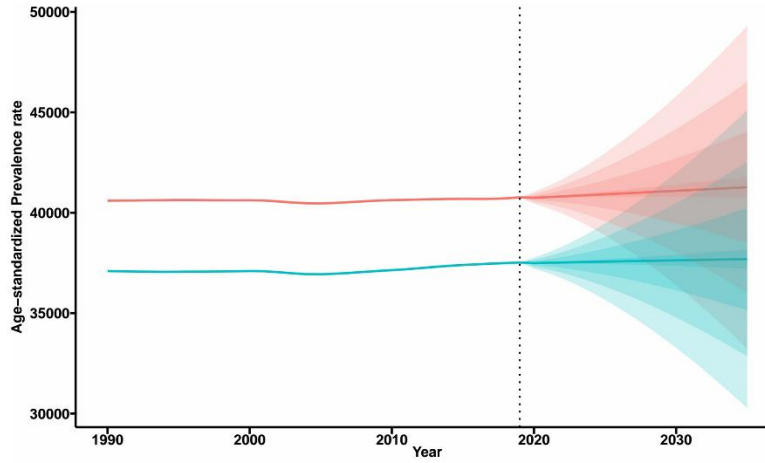
East Asia



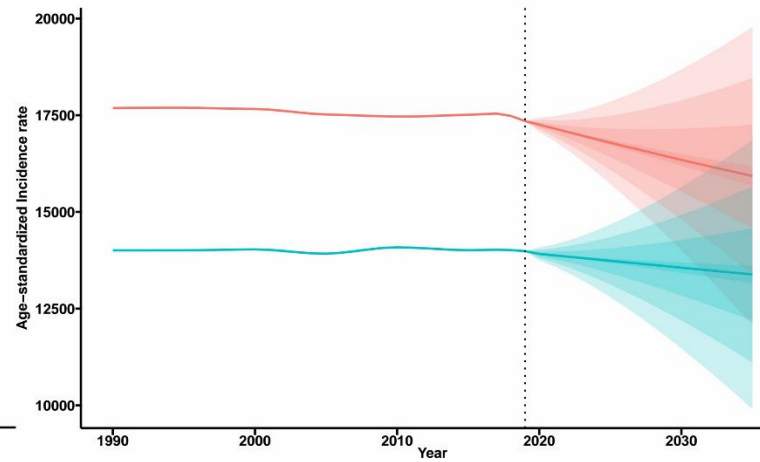
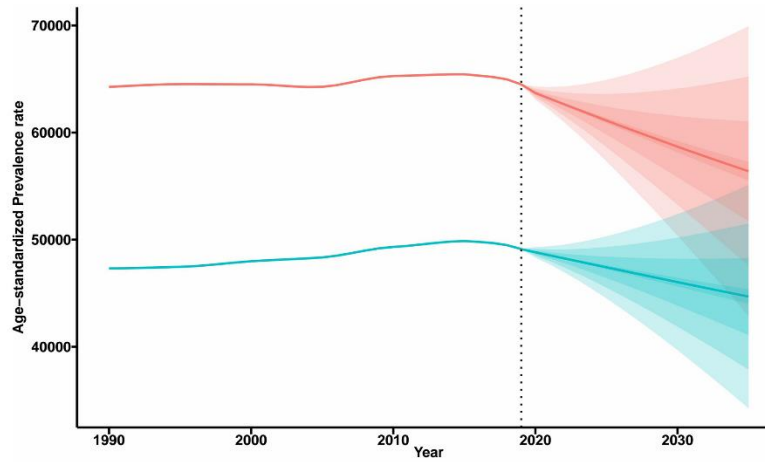
Eastern Europe



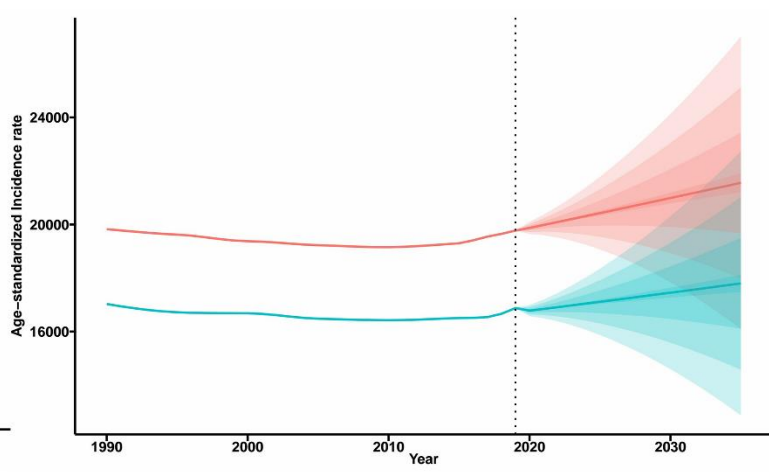
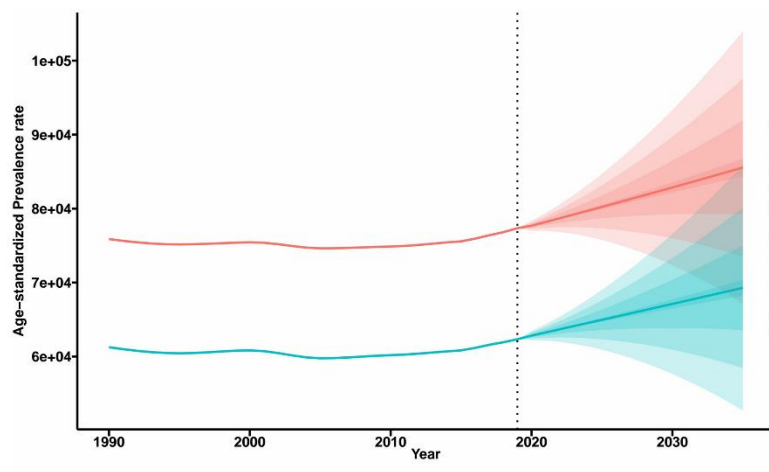
Eastern Sub-Saharan Africa



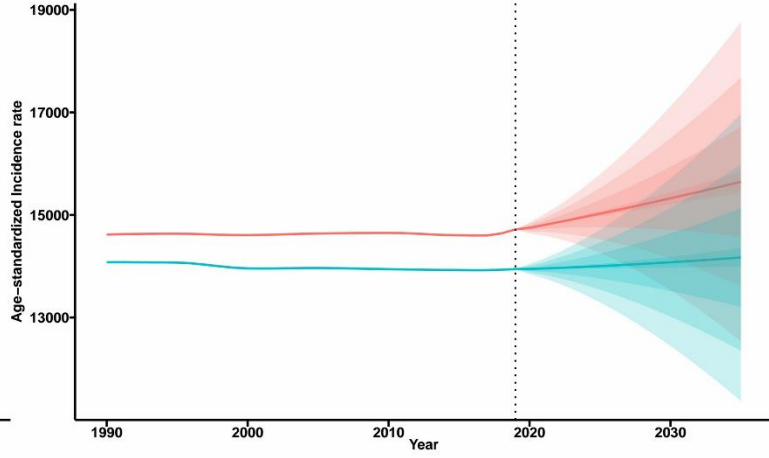
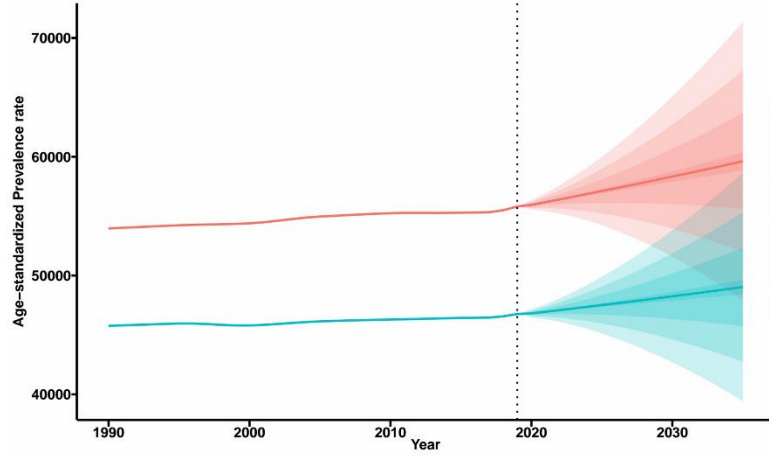
High-income Asia Pacific



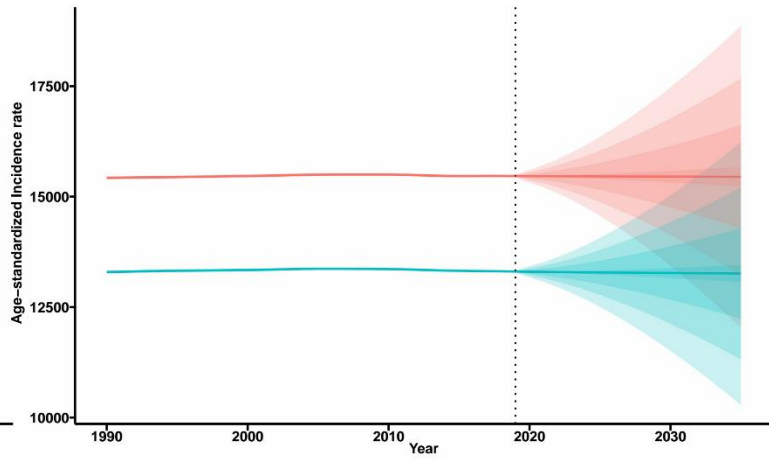
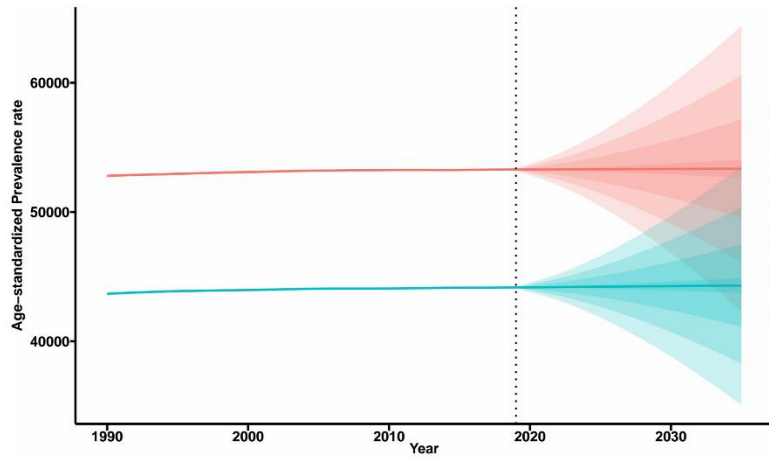
High-income North America



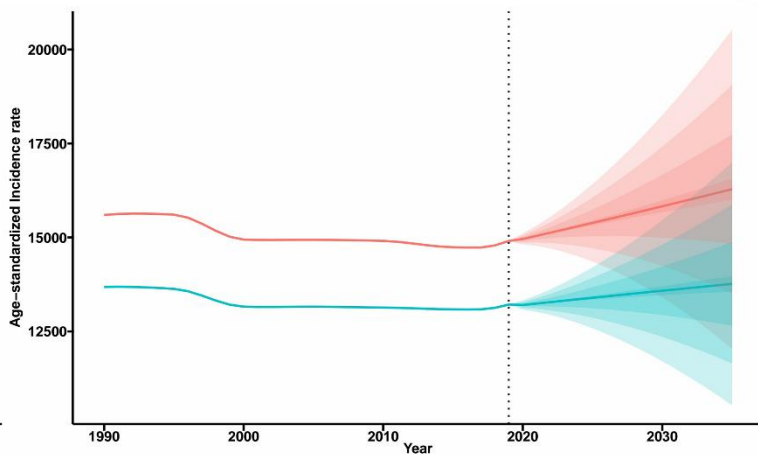
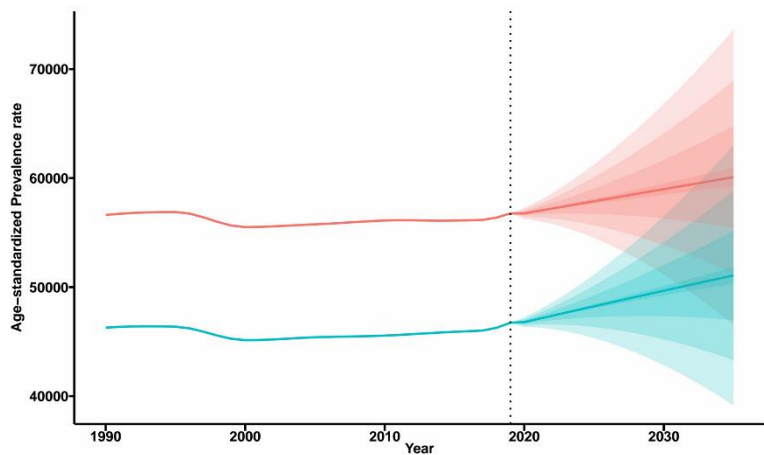
North Africa and Middle East



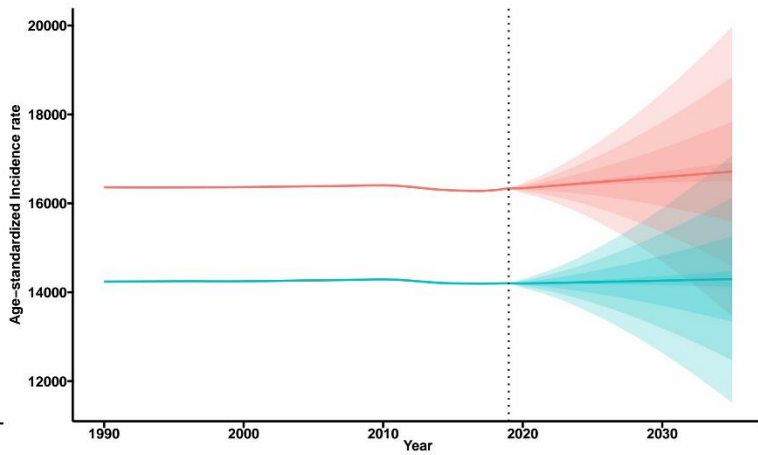
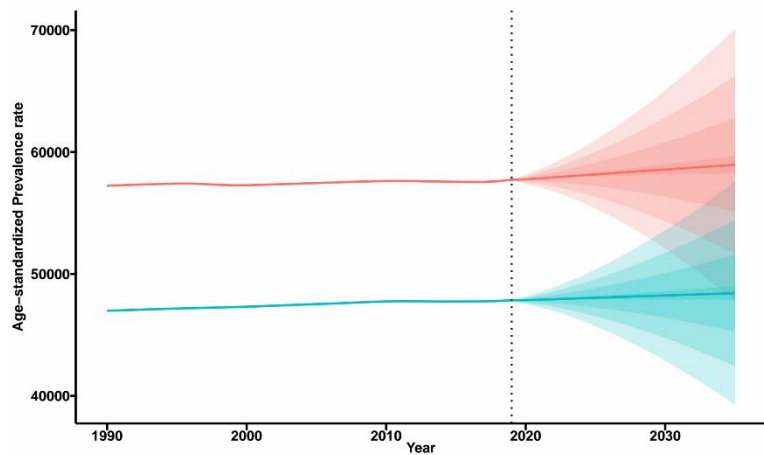
Oceania



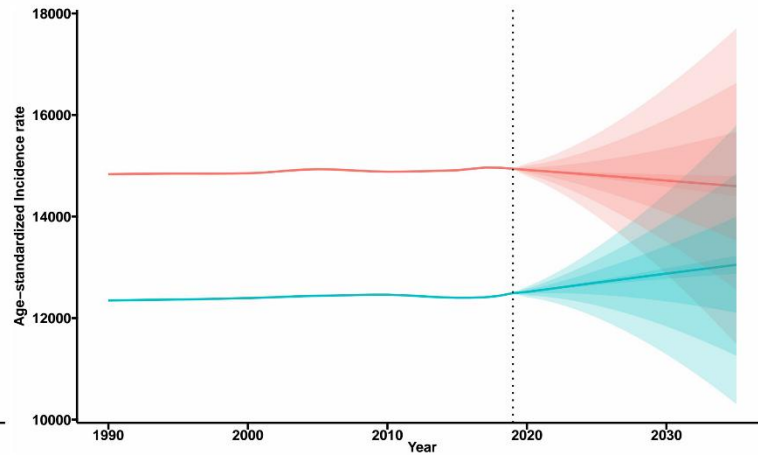
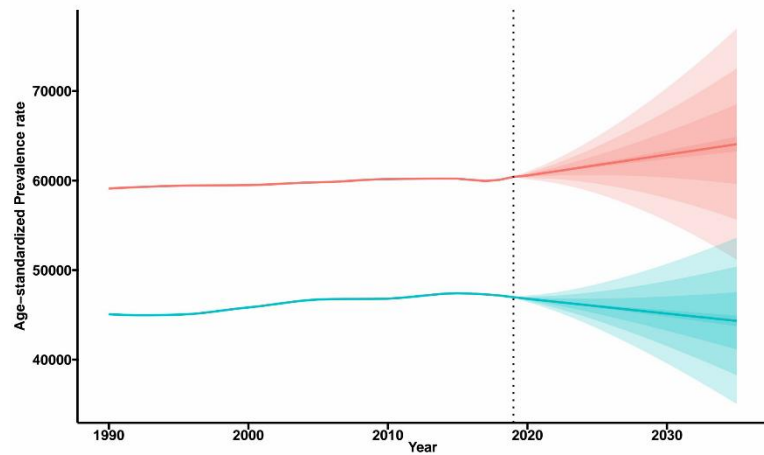
South Asia



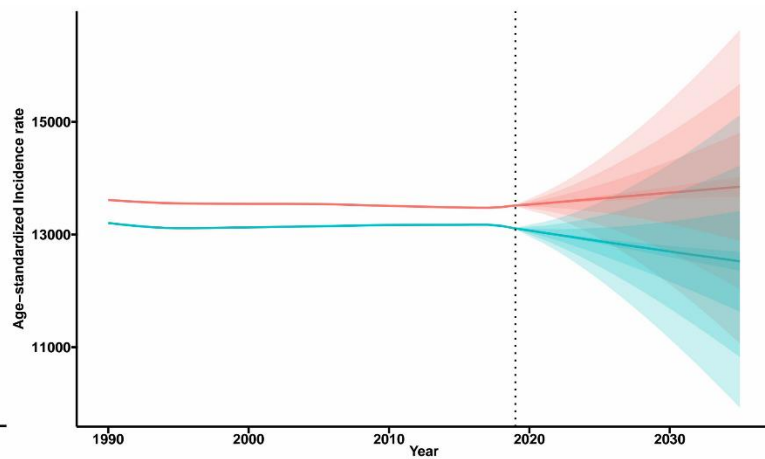
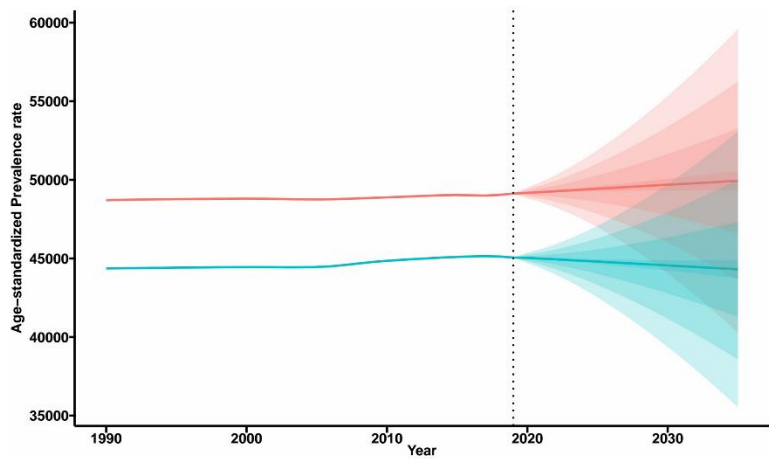
Southeast Asia



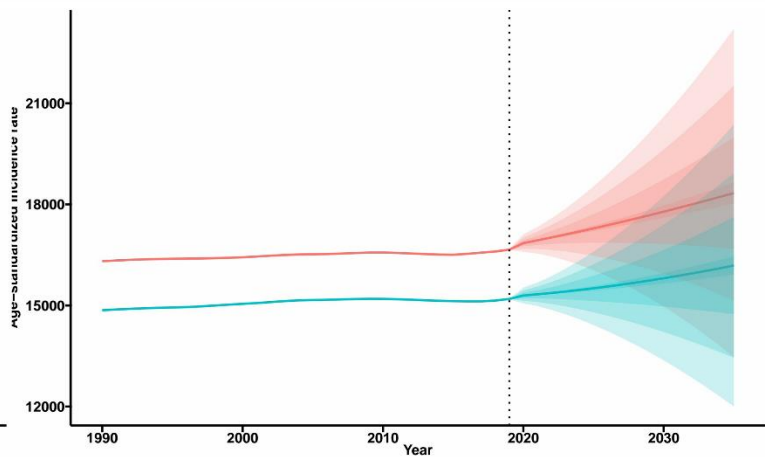
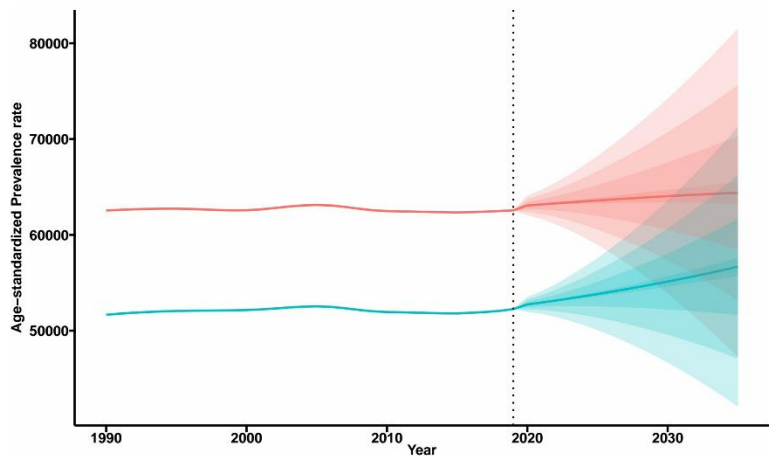
Southern Latin America



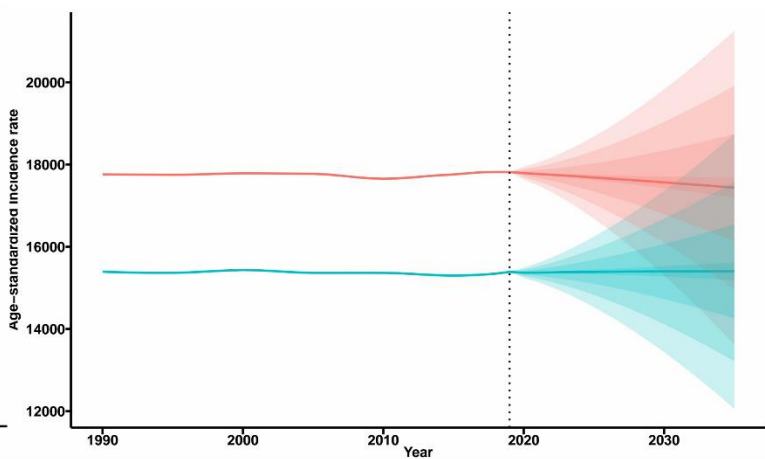
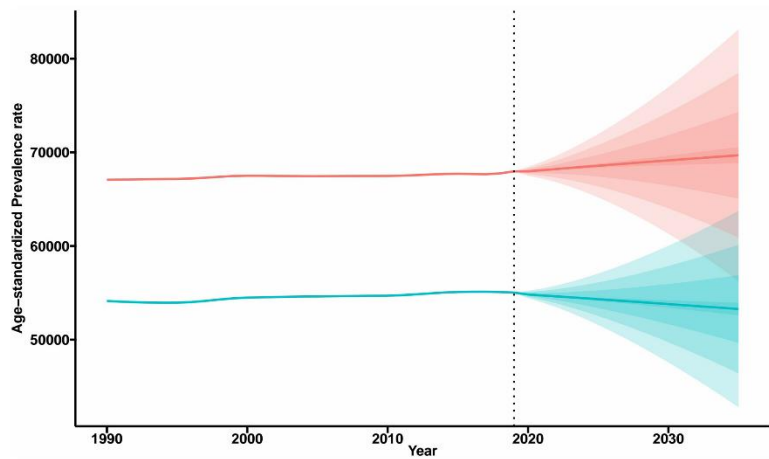
Southern Sub-Saharan Africa



Tropical Latin America



Western Europe



Western Sub-Saharan Africa

