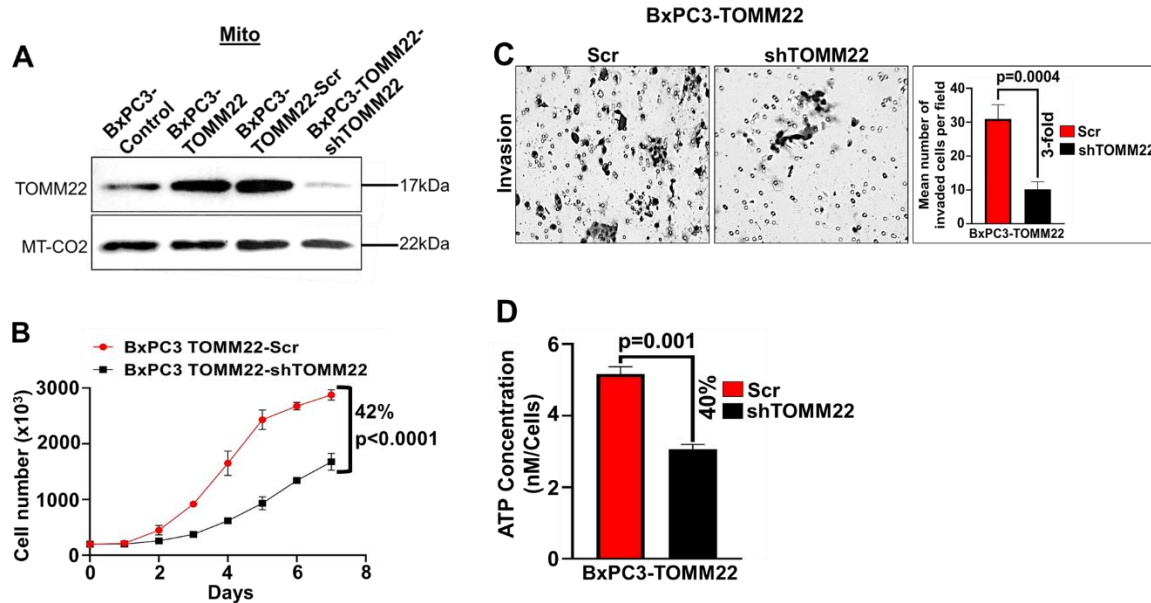


Supplementary figure 3



Supplementary figure 3. TOMM22 silencing inhibits growth, invasion and ATP production in BxPC3-TOMM22 cells.

Protein expression of TOMM22 in the mitochondrial lysate of BxPC3-Control, BxPC3-TOMM22, BxPC3-TOMM22-Scr and BxPC3-TOMM22-shTOMM22 cells **(A)**. MT-CO2 was used as a mitochondrial loading control. Growth kinetics measurement of BxPC3-TOMM22-Scr and BxPC3-TOMM22-shTOMM22 cells **(B)**, Data represents mean \pm SEM, (n=3). Statistical analysis by two-way ANOVA. BxPC3-TOMM22-Scr and BxPC3-TOMM22-shTOMM22 cells **(C)** were resuspended in serum-free media and seeded on matrigel-coated polycarbonate membrane inserts for invasion assay. Media supplemented with 10% FBS was used as a chemoattractant in lower wells and cells were allowed to invade for 24 hours. Data is presented as mean number of cells in 10 random fields \pm SEM, (n=3). Statistical analysis was carried out by unpaired Student's t-test. ATP Concentration of BxPC3-TOMM22-Scr and BxPC3-TOMM22-shTOMM22 cells **(D)**. ATP Concentration was calculated from the ATP standard curve and normalized to the respective cell numbers. Data represents mean \pm SEM, (n=3). Statistical analysis by unpaired Student's t-test. Control: empty vector; TOMM22: lentivirus with wild type TOMM22; Scr: Scrambled control; shTOMM22: TOMM22 shRNA.