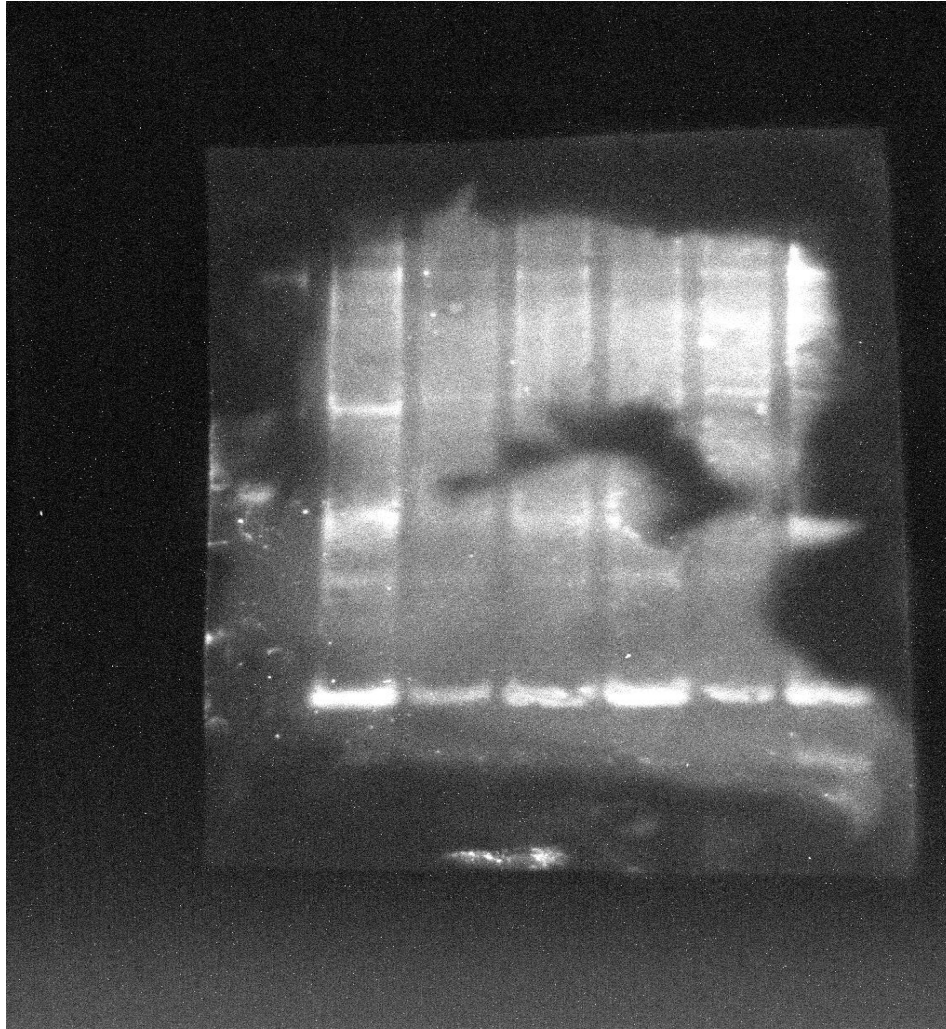


# PPAR $\alpha$

We have not  
used last two  
lines



Control

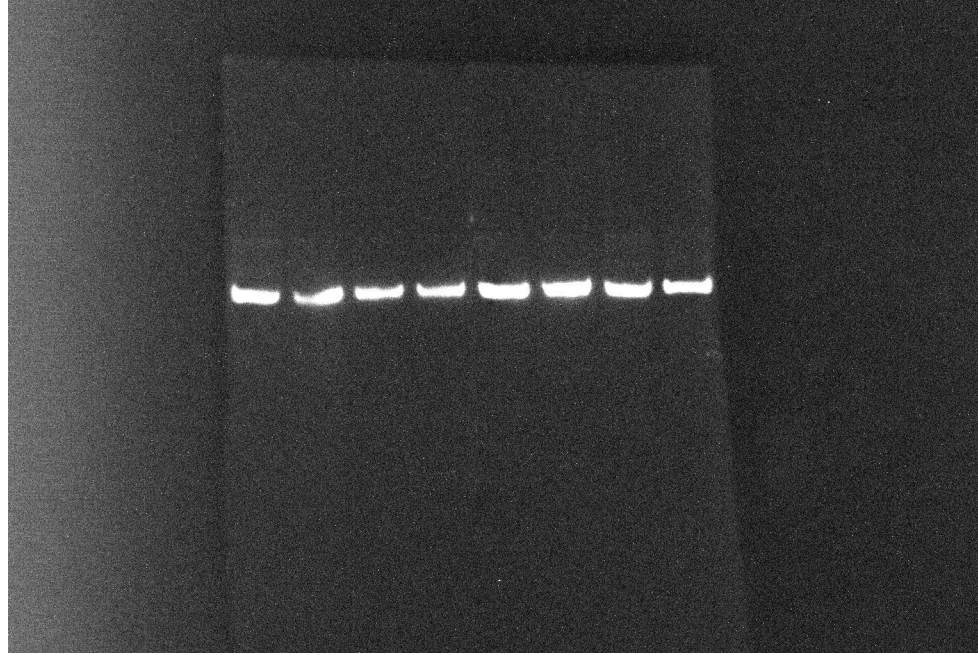
1nMPTX

0.5µMol RGZ

1nM  
PTX+0.5µMol  
RGZ

# $\beta$ actin

We have not  
used last two  
lines



Control

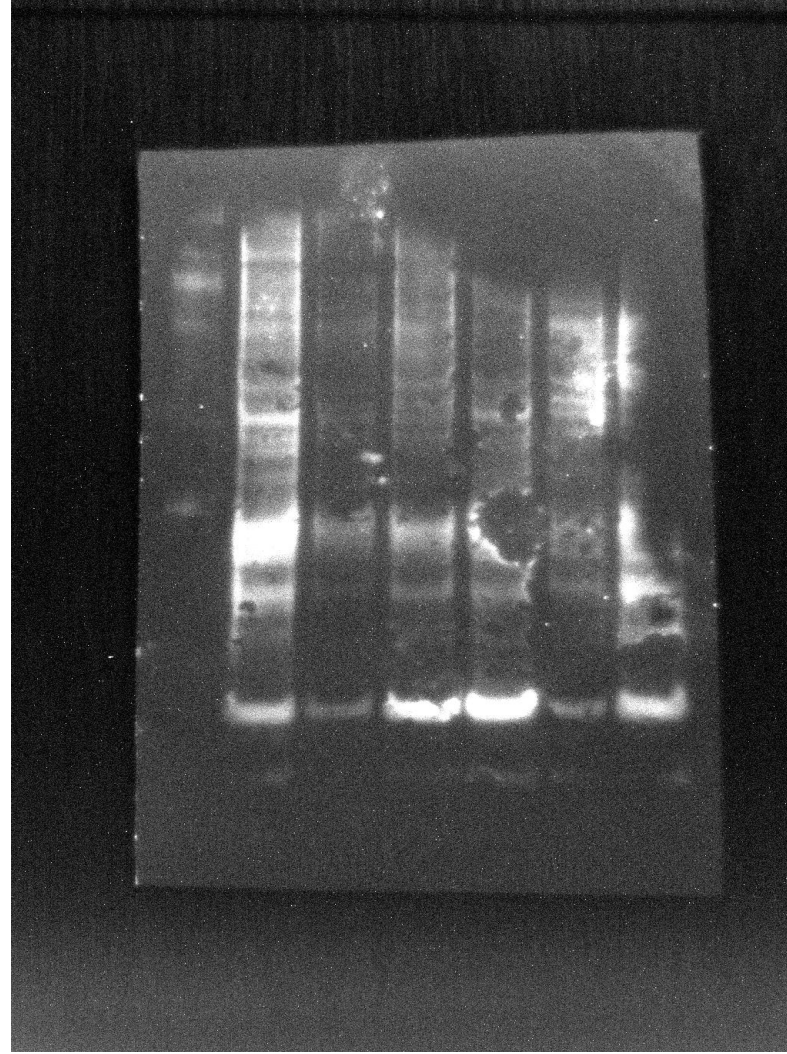
1nM PTX

0.5 $\mu$ Mol RGZ

1nM PTX+0.5 $\mu$  Mol  
RGZ

# PPAR $\gamma$

We have not  
used last two  
lines



Control

1nM PTX

0.5μMol RGZ

1nM

PTX+0.5μMol  
RGZ