

Expression and Relationship of PD-L1, CD24, and CD47 in Hepatitis B Virus Associated Hepatocellular Carcinoma

Aiping Lin ^{1#}, Mingxia Wang ^{2#}, Zhihui Wang ^{3#}, Juan Lin ⁴, Zhihui Lin ¹, Shaowei Lin ⁵, Shiyun Lu ¹, Hong Lin ¹, Haijun Tang ^{6*}, Xueping Huang ^{1*}

Supplementary Table S1. Univariate analysis of prognostic factors in HBV-associated HCC

| Factors | P (OS) | HR (OS) | 95%CI (OS) | P (PFS) | HR (PFS) | 95%CI (PFS) |
|------------------------------------|--------|---------|--------------|---------|----------|--------------|
| Gender | 0.401 | 0.686 | 0.285-1.653 | 0.560 | 0.771 | 0.321-1.851 |
| Age | 0.558 | 1.008 | 0.981-1.036 | 0.667 | 1.007 | 0.976-1.039 |
| Smoking | 0.018 | 2.208 | 0.218-1.829 | 0.003 | 2.732 | 1.394-5.353 |
| Drinking | 0.254 | 1.595 | 0.716-3.556 | 0.248 | 1.602 | 0.721-3.560 |
| Child-Pugh grade | 0.072 | 3.044 | 0.904-10.249 | 0.256 | 1.995 | 0.607-6.559 |
| Number of tumors | 0.000 | 9.738 | 2.743-34.572 | 0.000 | 12.568 | 3.302-47.831 |
| Invasion of the liver capsule | 0.321 | 0.698 | 0.342-1.421 | 0.801 | 0.913 | 0.450-1.854 |
| Histopathological grading | 0.272 | 1.962 | 0.589-6.530 | 0.418 | 1.655 | 0.489-5.601 |
| TNM stage | 0.006 | 2.927 | 1.370-6.256 | 0.001 | 3.937 | 1.776-8.728 |
| Postoperative treatment modalities | 0.454 | 1.278 | 1.144-4.260 | 0.487 | 1.254 | 0.662-2.376 |
| PD-L1 | 0.018 | 2.589 | 1.175-5.707 | 0.021 | 2.456 | 1.150-5.637 |
| CD24 | 0.029 | 2.074 | 1.078-3.992 | 0.015 | 2.258 | 1.175-4.340 |
| CD47 | 0.343 | 0.696 | 0.329-1.472 | 0.384 | 0.719 | 0.342-1.511 |
| AFP | 0.551 | 1.000 | 1.000-1.000 | 0.549 | 1.000 | 1.000-1.000 |
| CEA | 0.040 | 1.198 | 1.008-1.423 | 0.131 | 1.143 | 0.961-1.359 |
| CA199 | 0.018 | 1.010 | 1.002-1.019 | 0.025 | 1.010 | 1.001-1.018 |

| | | | | | | |
|--------------------------------------|-------|-------|-------------|-------|-------|-------------|
| ALT | 0.452 | 0.999 | 0.995-1.002 | 0.971 | 1.000 | 0.996-1.004 |
| AST | 0.958 | 1.000 | 0.995-1.004 | 0.538 | 1.001 | 0.997-1.006 |
| ALB | 0.084 | 0.955 | 0.906-1.006 | 0.049 | 0.946 | 0.896-1.000 |
| TBIL | 0.138 | 1.028 | 0.991-1.066 | 0.149 | 1.027 | 0.990-1.065 |
| RGT | 0.097 | 1.002 | 1.000-1.003 | 0.019 | 1.002 | 1.000-1.004 |
| PT | 0.595 | 1.064 | 0.847-1.336 | 0.525 | 1.066 | 0.875-1.300 |
| WBC | 0.462 | 1.044 | 0.930-1.172 | 0.209 | 1.079 | 0.958-1.215 |
| PLT | 0.506 | 0.999 | 0.996-1.002 | 0.347 | 0.998 | 0.995-1.002 |
| Hb | 0.300 | 0.990 | 0.971-1.009 | 0.097 | 0.982 | 0.962-1.003 |
| Maximum diameter of primary tumor | 0.001 | 1.112 | 1.044-1.185 | 0.001 | 1.118 | 1.048-1.192 |

OS: Overall survival; PFS: Progression-free survival.

Supplementary Table S2. Correlation between CD47 expression and clinicopathological factors in HBV-associated HCC

| Factors | N | CD47 | | P | Spearman correlation coefficient |
|--|----|-----------------------|------------------------|-------|----------------------------------|
| | | Low expression (n=18) | High expression (n=49) | | |
| TNM stage (%) | | | | 0.950 | |
| I | 33 | 10 (55.5) | 23 (46.9) | | |
| II | 22 | 5 (27.8) | 17 (34.7) | | |
| III | 11 | 3 (16.7) | 8 (16.3) | | |
| IV | 1 | 0 (0.0) | 1 (2.0) | | |
| Histopathological grading (%) | | | | 0.320 | |
| Low | 13 | 3 (16.7) | 10 (20.4) | | |
| Intermediate | 49 | 15 (83.3) | 34(69.4) | | |
| High | 5 | 0 (0.0) | 5 (10.2) | | |
| Number of tumors (%) | | | | 0.224 | |
| 1 | 57 | 15 (83.3) | 42 (85.7) | | |
| 2 | 7 | 1 (5.6) | 6 (12.2) | | |
| >2 | 3 | 2 (11.1) | 1 (2.0) | | |
| Maximum diameter of primary tumor (cm) (mean±SD) | 67 | 6.90±5.38 | 7.25±4.44 | 0.787 | |
| CK19 | 67 | 0.06±0.24 | 0.63±1.93 | 0.282 | |

| | | | | | |
|------------|----|---------------|---------------|-------|--------|
| (mean±SD) | | | | | |
| CK18 | | | | | |
| | 67 | 4.44±4.03 | 5.29±4.17 | 0.463 | |
| (mean±SD) | | | | | |
| CD34 | | | | | |
| | 67 | 1.56±2.33 | 3.37±3.92 | 0.025 | -0.037 |
| (mean±SD) | | | | | |
| Glypican-3 | | | | | |
| | 67 | 4.72±3.74 | 3.67±3.97 | 0.334 | |
| (mean±SD) | | | | | |
| Hepar-1 | | | | | |
| | 67 | 1.11±2.35 | 2.47±3.61 | 0.079 | |
| (mean±SD) | | | | | |
| Ki67 (%) | | | | | |
| | 67 | 28.61%±18.85% | 26.94%±22.64% | 0.781 | |
| (mean±SD) | | | | | |

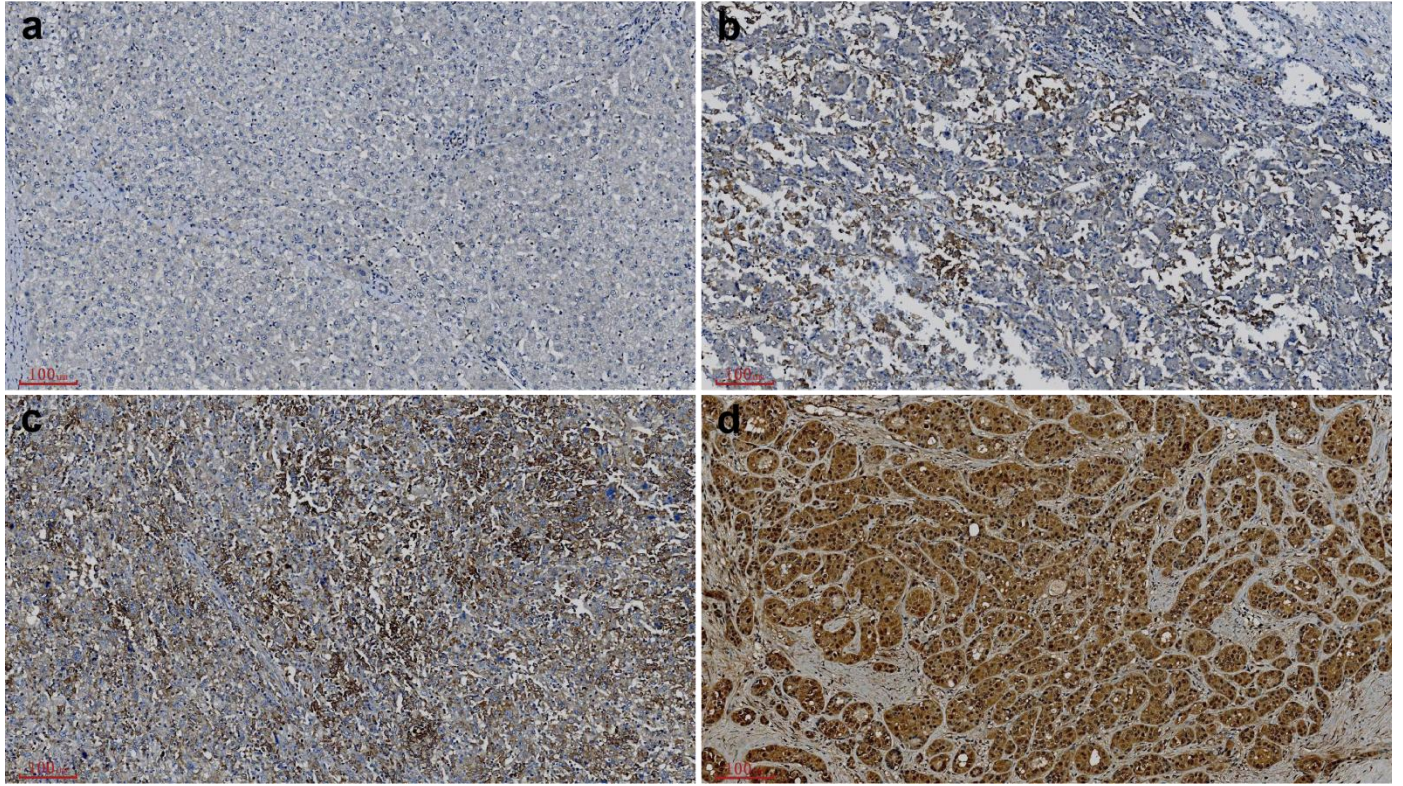


Fig. S1 Immunohistochemical study of PD-L1 expression in hepatocellular carcinoma tissues. The intensity of membranous staining was graded as negative (**a**), weak (**b**), intermediate (**c**), or strong (**d**) (a-d, $\times 100$).

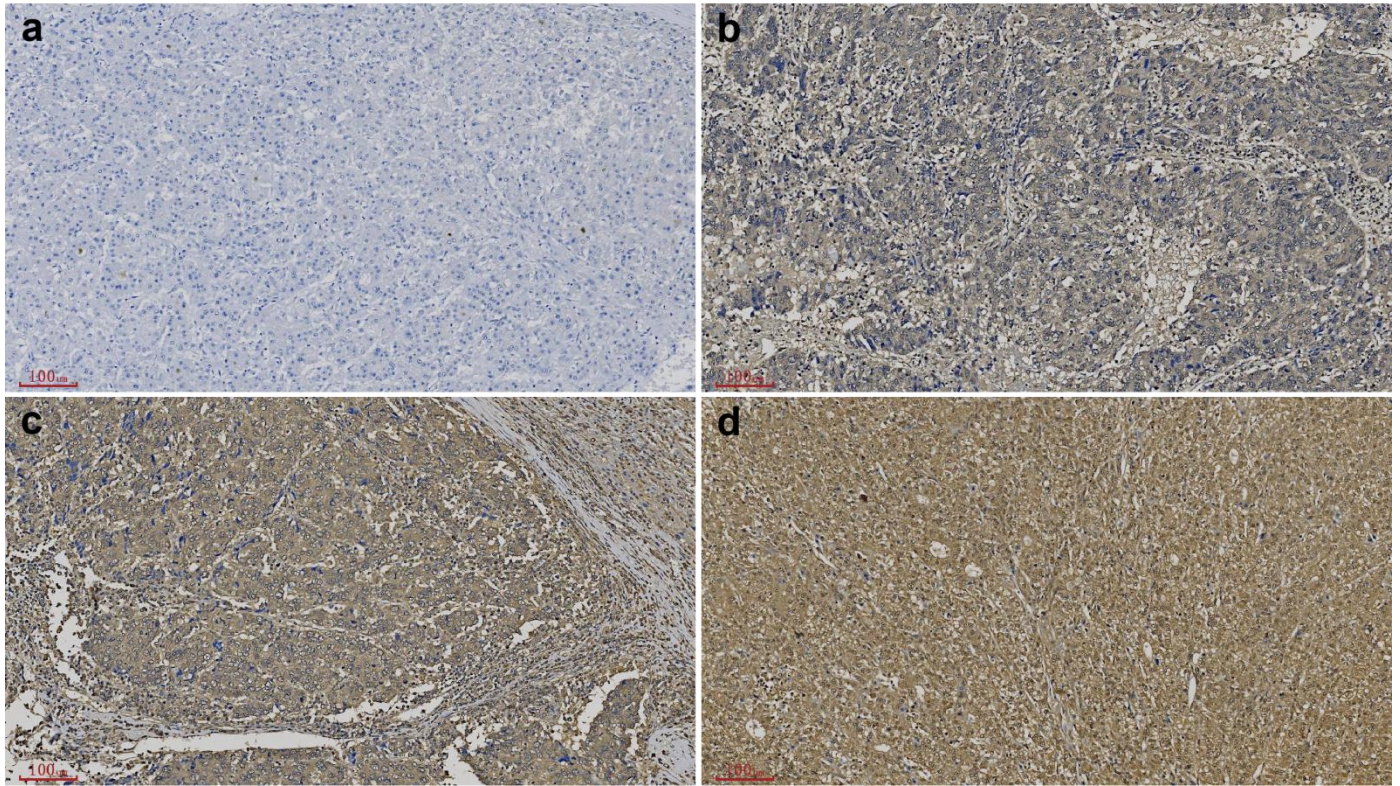


Fig. S2 Immunohistochemical study of CD24 expression in hepatocellular carcinoma tissues. The intensity of membranous staining was graded as negative (**a**), weak (**b**), intermediate (**c**), or strong (**d**) (a-d, $\times 100$).

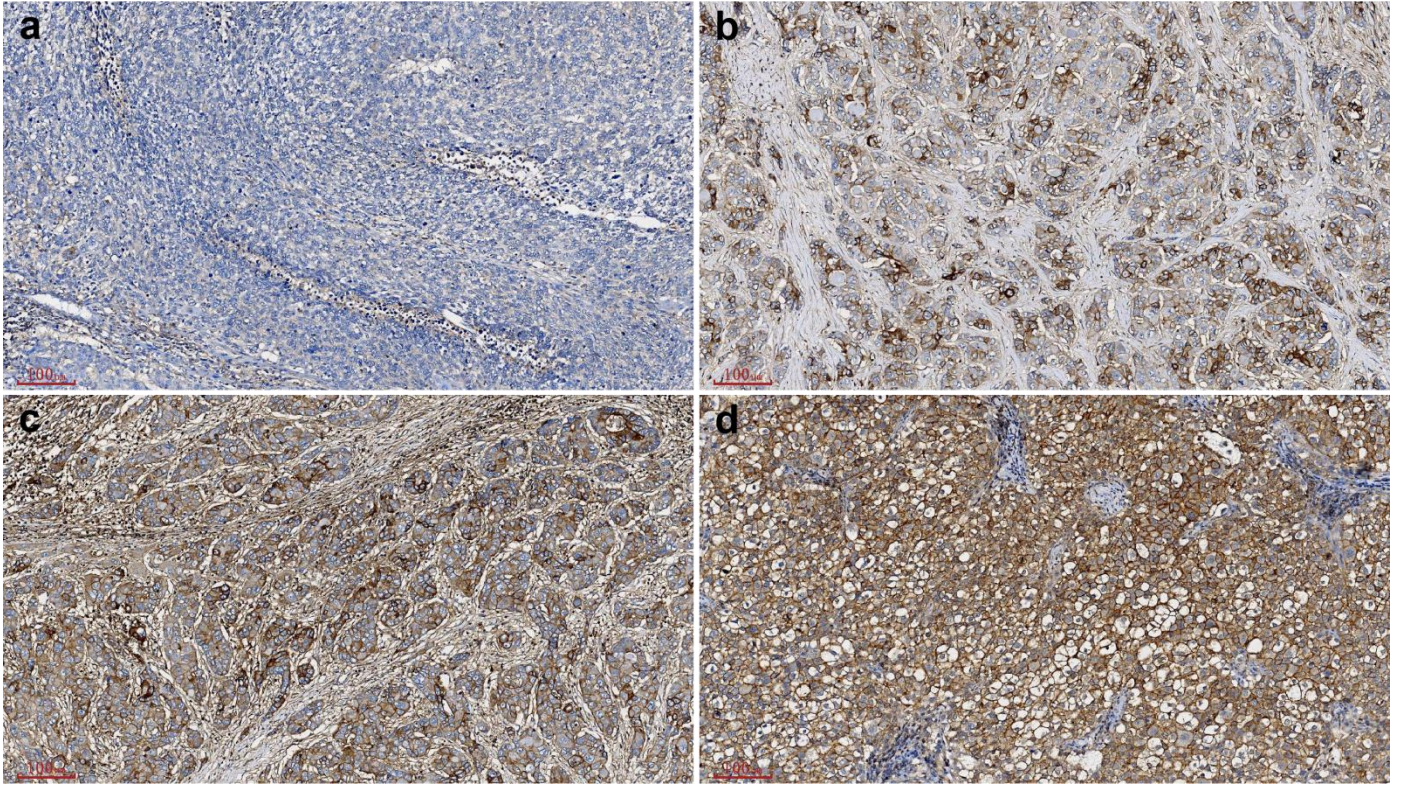


Fig. S3 Immunohistochemical study of CD47 expression in hepatocellular carcinoma tissues. The intensity of membranous staining was graded as negative (**a**), weak (**b**), intermediate (**c**), or strong (**d**) (a-d, $\times 100$).