

Supplementary Materials

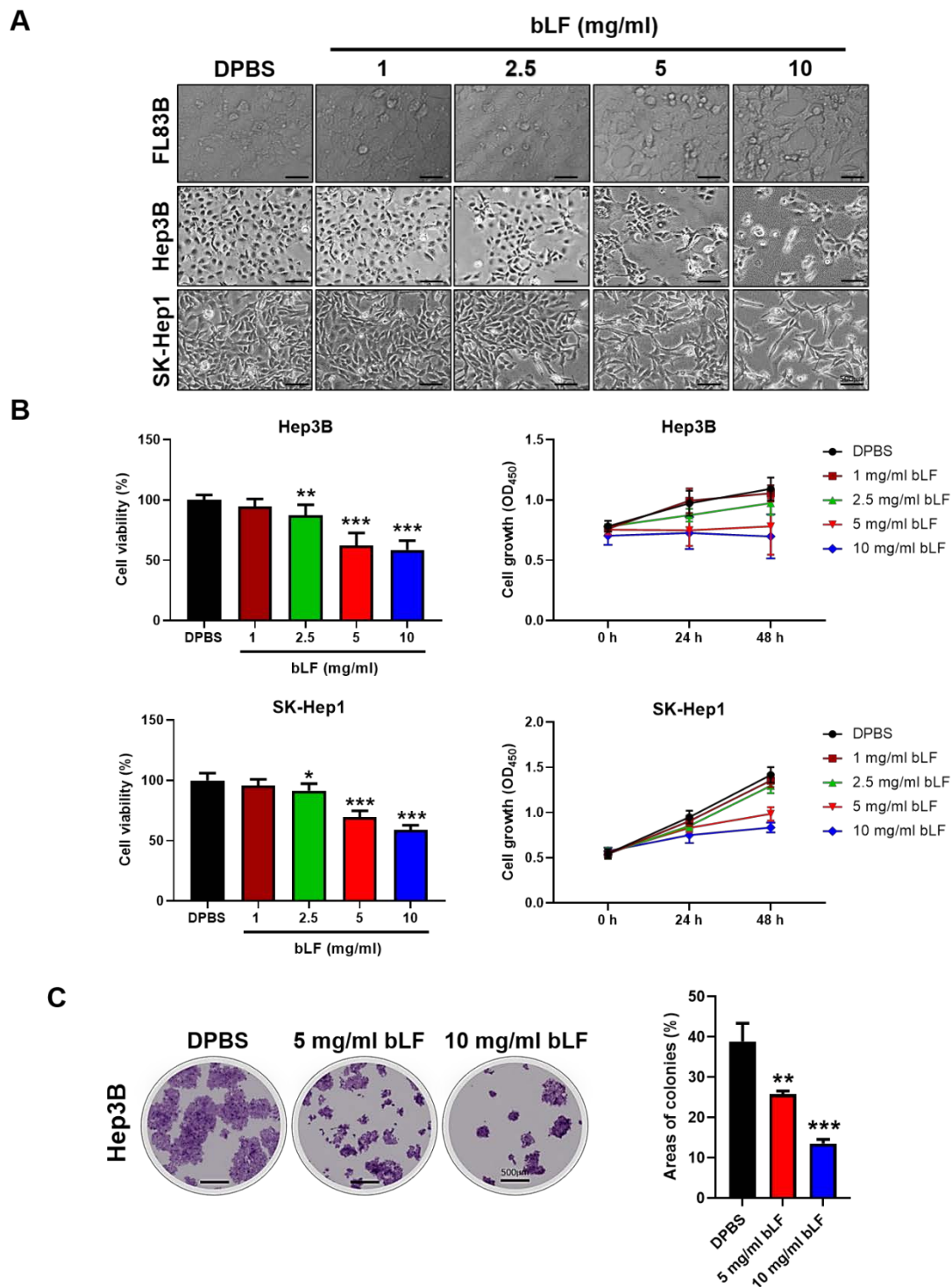


Figure S1. Effects of bovine lactoferrin (bLF) on the proliferation of human liver cancer cells. **(A)** Representative images of FL83B, Hep3B, and SK-Hep1 cells after 48 h of incubation with either LF (1, 2.5, 5, and 10 mg/ml) or DPBS (control). **(B)** Cell viability and proliferation profiles. The cell viability (48 h) and proliferation profiles (0, 24, and 48 h) were tested by CCK-8. **(C)** Representative images of the Hep3B colony formation assay (scale bars, 500 μ m). Statistical significance: * ($p < 0.05$), ** ($p < 0.01$), and *** ($p < 0.001$) vs. DPBS.

Table S1. The details of the antibodies used in this study

Antibody	Dilutions		Host	Brand	Cat. No
	WB	IHC			
BAX	1000 x		Rabbit	SAB	34260
Bcl-2	1000 x		Rabbit	Cell Signaling	2872
Caspase-3	1000 x		Rabbit	Cell Signaling	9662
Caspase-3 (cleaved)	1000 x		Rabbit	Cell Signaling	9661
CD31		200 x	Rabbit	Arigo	ARG52748
CDK2	1000 x		Rabbit	Cell Signaling	2546
CDK2		200 x	Rabbit	Servicebio	GB112129
CDK4	1000 x		Rabbit	Cell Signaling	12790
CDK4		200 x	Rabbit	Servicebio	GB11238-2
c-Jun (S73)	1000 x		Rabbit	Cell Signaling	3270
Cyclin A	1000 x		Mouse	Santa Cruz	sc-239
Cyclin D1	2000 x		Rabbit	abcam	ab226977
Cytochrome C	1000 x		Rabbit	Cell Signaling	11940S
ERK1/2	1000 x		Rabbit	Cell Signaling	4695
ERK1/2 (T202/Y204)	2000 x		Rabbit	Cell Signaling	4370
ITLN1	2000 x		Rabbit	SAB	36560
JNK	1000 x		Rabbit	Cell Signaling	9252
JNK (T183/Y185)	1000 x		Rabbit	Cell Signaling	4668
Lactoferrin	1000 x		Goat	abcam	ab112970
LRP1	1000 x		Rabbit	abcam	ab227734
p21	1000 x		Rabbit	Cell Signaling	2947
p27	1000 x		Rabbit	Cell Signaling	2552
p27 (S10)	1000 x		Rabbit	abcam	ab62364
p38 MAPK	1000 x		Rabbit	Cell Signaling	8690
p38 MAPK (T180/Y182)	1000 x		Rabbit	Cell Signaling	4511
PARP1	1000 x		Mouse	Santa Cruz	sc-8007
PARP1 (cleaved)	1000 x		Rabbit	Merck	AB3565
TLR4	1000 x		Mouse	Santa Cruz	sc-293072
TRAF2	1000 x		Mouse	Santa Cruz	sc-136999
VEGF		200 x	Mouse	Santa Cruz	sc-7269
β -actin	2500 x		Mouse	Santa Cruz	sc-7963

SAB: Signalway Antibody LLC. (Greenbelt, Maryland, USA)

Arigo: Arigo Biolaboratories (Hsinchu City, Taiwan, ROC)

Servicebio: Servicebio Technology Co., Ltd. (Wuhan, Hubei, China)

Table S2. Information on the shRNA clones used in this study

shRNA name	Taxonomy	NM ID	target gene	target sequence	shRNA type
TRCN0000158887	human	NM_017625	ITLN1	GCATCTTATTACTCACCTAT	plasmid
TRCN0000137105	human	NM_017625	ITLN1	CCAGTGAAATATGGAGAAGGA	plasmid
TRCN0000134450	human	NM_017625	ITLN1	GATATGGAACTCATGTTGGTT	plasmid
TRCN0000230616	human	NM_002332	LRP1	GTCCAACACTACAGTTACTTAA	lentivirus
TRCN0000257100	human	NM_002332	LRP1	GATCCGTGTGAACCGCTTTAA	lentivirus
TRCN0000230615	human	NM_002332	LRP1	GATGCCTATCTGGACTATATT	lentivirus

For transfection control, an empty cloning vector (pLAS3w.FLuc.Ppuro) was used.