

Supporting Information

Synthesis and Characterization of Multifunctional Fluorescent-Magnetic Platinum Nanoclusters

Shin-ichi Tanaka ^{1,*}, Kohei Yamagami², Kazuhisa Sato^{3,4}, Hidehiro Yasuda^{3,4} Hirohiko Niioka⁵
and Hiroki Wadati^{6,7}

¹ National Institute of Technology, Kure College, 2-2-11 Agaminami, Kure, Hiroshima, 737-8506 Japan.

² Japan Synchrotron Radiation Research Institute (JASRI), 1-1-1 Kouto, Sayo-cho, Sayo-gun, Hyogo 679-5198 Japan.

³ Research Center for Ultra-High Voltage Electron Microscopy, Osaka University, 7-1 Mihogaoka, Ibaraki, Osaka 567-0047, Japan.

⁴ Division of Materials and Manufacturing Science, Graduate School of Engineering, Osaka University, 2-1 Yamadaoka, Suita, Osaka 565-0871, Japan.

⁵ Graduate School of Information Science and Technology, Osaka University, TechnoAlliance Building C607, 2-8 Yamadaoka, Suita, Osaka 565-0871 Japan.

⁶ Department of Material Science, Graduate School of Science, University of Hyogo, 3-2-1 Kouto, Kamigori-cho, Ako-gun, Hyogo, 678-1297, Japan.

⁷ Institute of Laser Engineering, Osaka University, 2-8 Yamadaoka, Suita, Osaka 565-0871, Japan.

*Corresponding Author E-mail: s-tanaka@kure-nct.ac.jp

Contents

Experimental section

Supplementary Figures

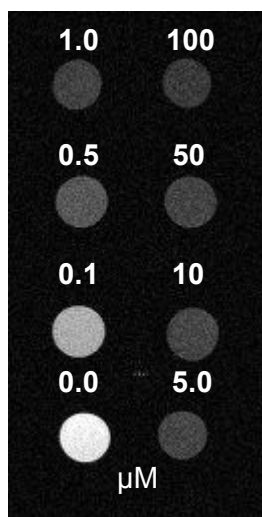
Experimental section

Cell Culture. SK-BR-3 cells were grown in DMEM (Sigma-Aldrich, Japan) and were cultured with 10% fetal bovine serum (FBS) at 37°C and 5% CO₂.

MR images. MR images of [PtNC(Ami)] were observed using a horizontal 7-T scanner (PharmaScan 70/16 US; Bruker Biospin, Ettlingen, Germany). And MR images were obtained with the following parameters: repetition time (TR)=200; echo time (TE)=16 ms; slice thickness=1.0 mm; field-of-view=60×30 mm².

Supplementary Figures

(a)



(b)

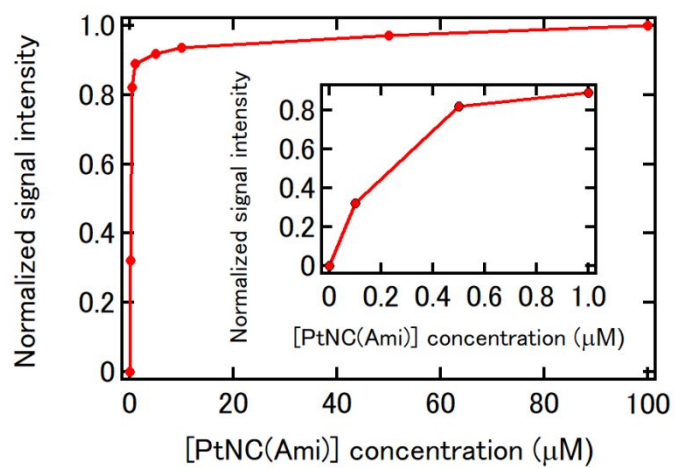


Figure S1. (a) T1-weighted MR images at different concentrations of [PtNC(Ami)] (0.0, 0.1, 0.5, 1.0, 5.0, 10, 50, 100 μM). (b) Normalized signal intensity of T1-weighted MR images. Inset shows enlarged normalized signal intensity from 0.0 to 1.0 μM.