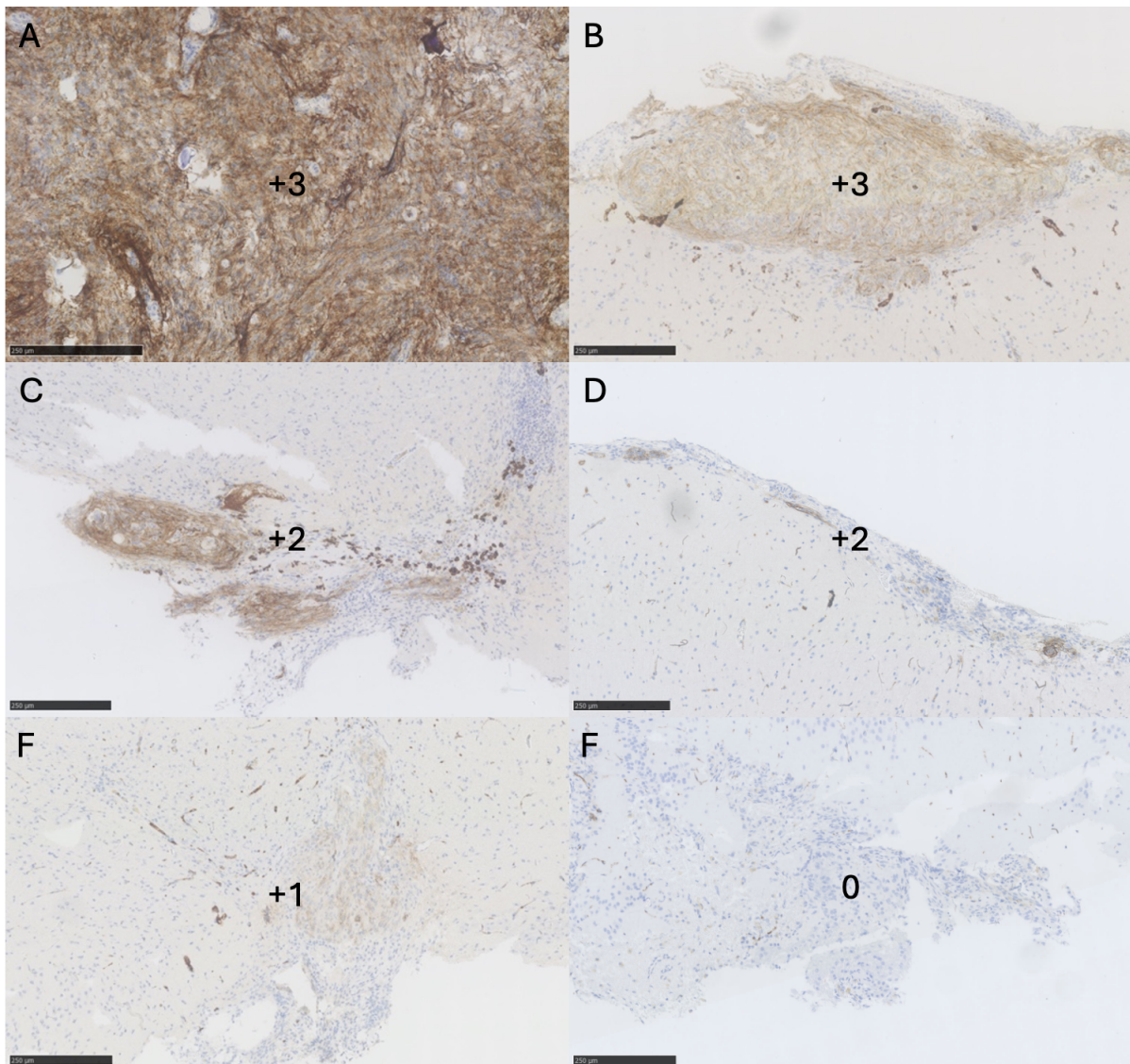
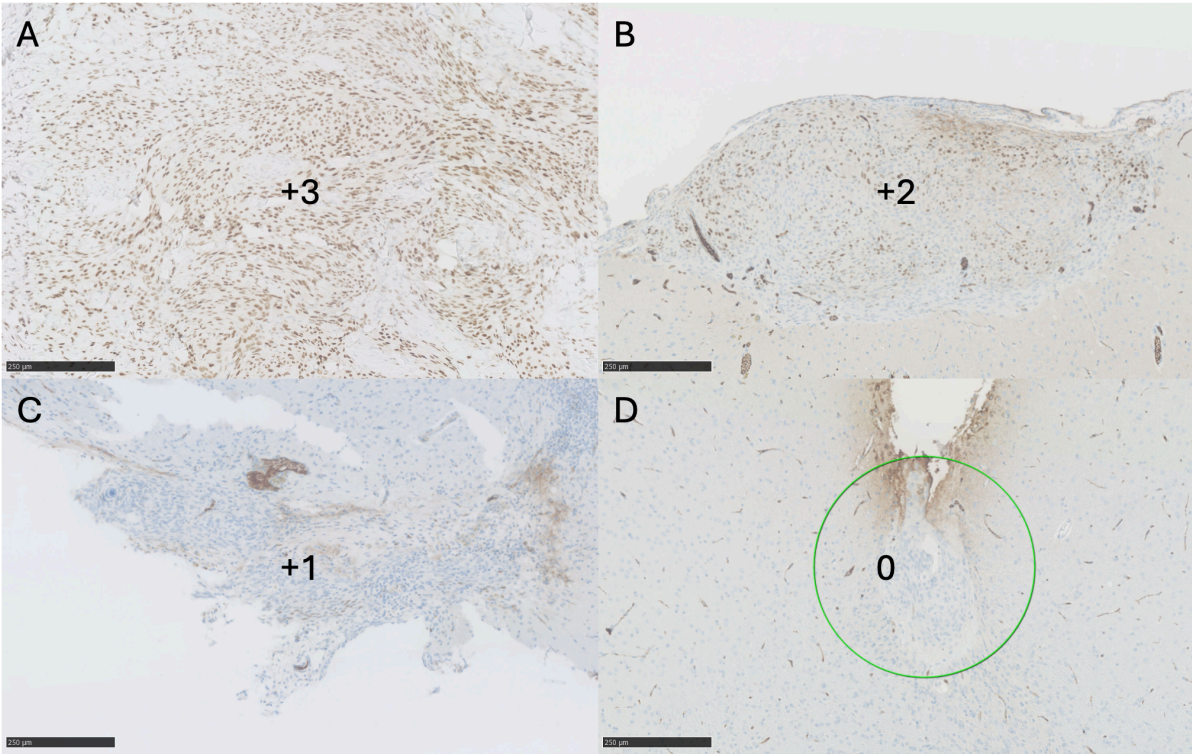


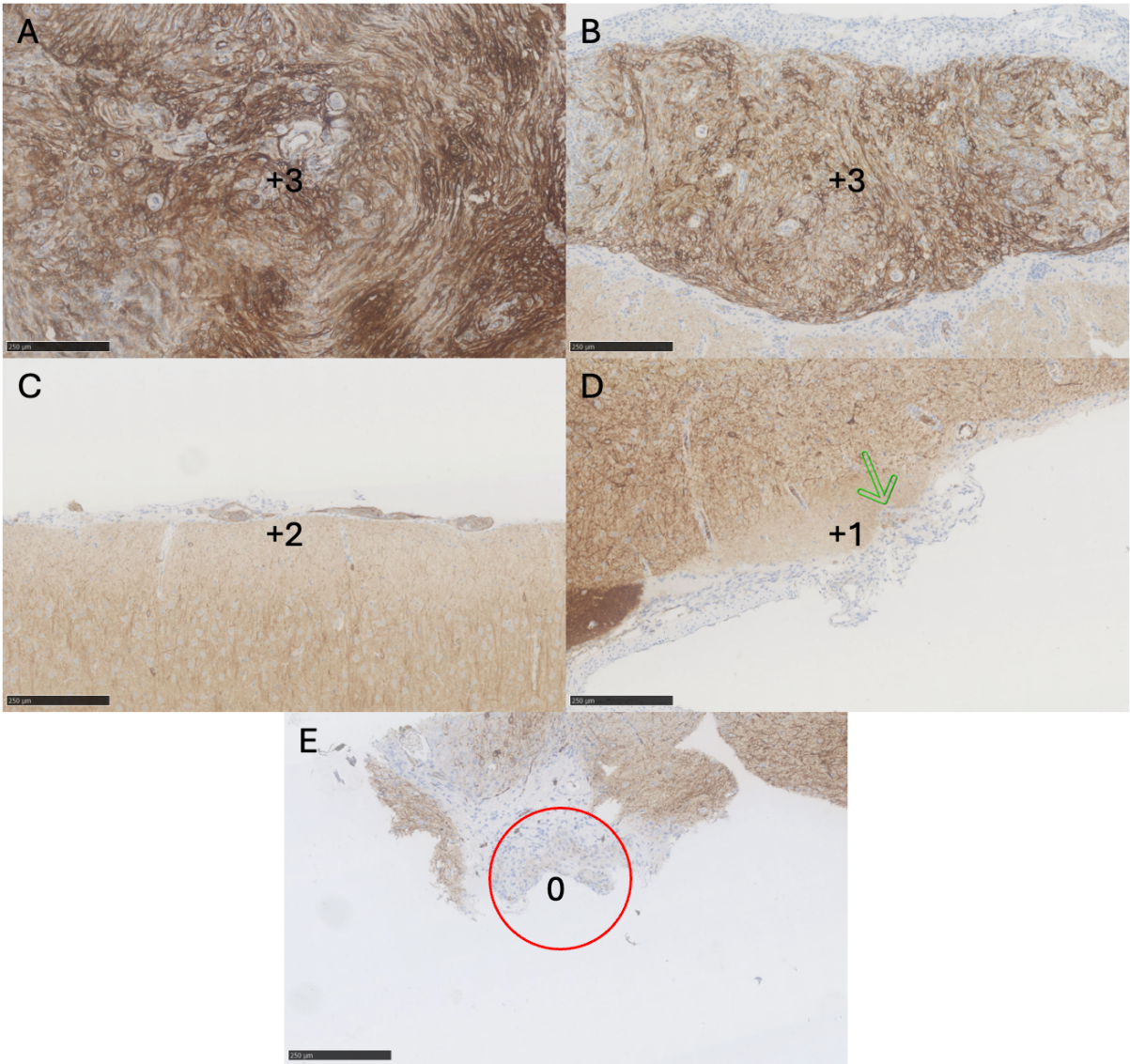
Supplemental Material 8 – Examples of immunohistochemical staining and grades (in 10x)



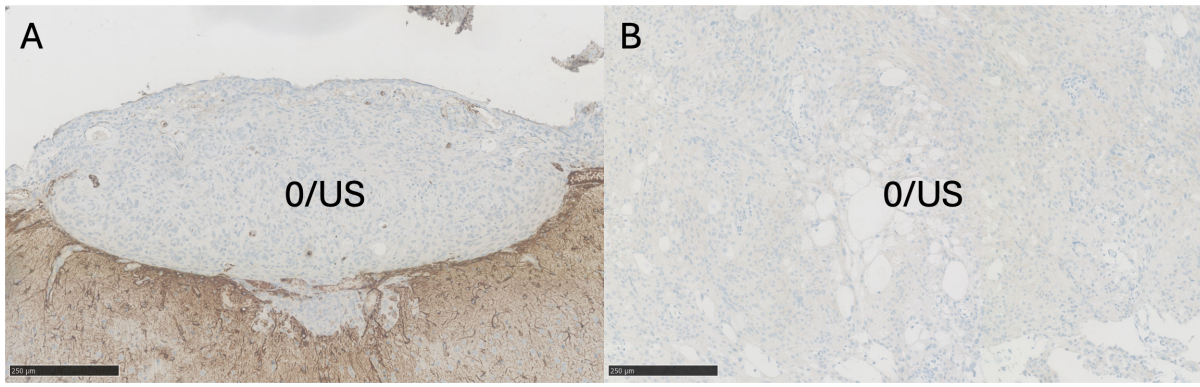
Supplemental material figure 8.1 Epithelial Membrane Antigen (EMA) staining examples including scores. **A.** a primary patient-derived tumor. **B-F.** Xenografts from various tumors



Supplemental material figure 8.2 Progesterone receptor (PR) staining examples including scores. **A.** a primary patient-derived tumor. **B-D.** Xenografts from various tumors

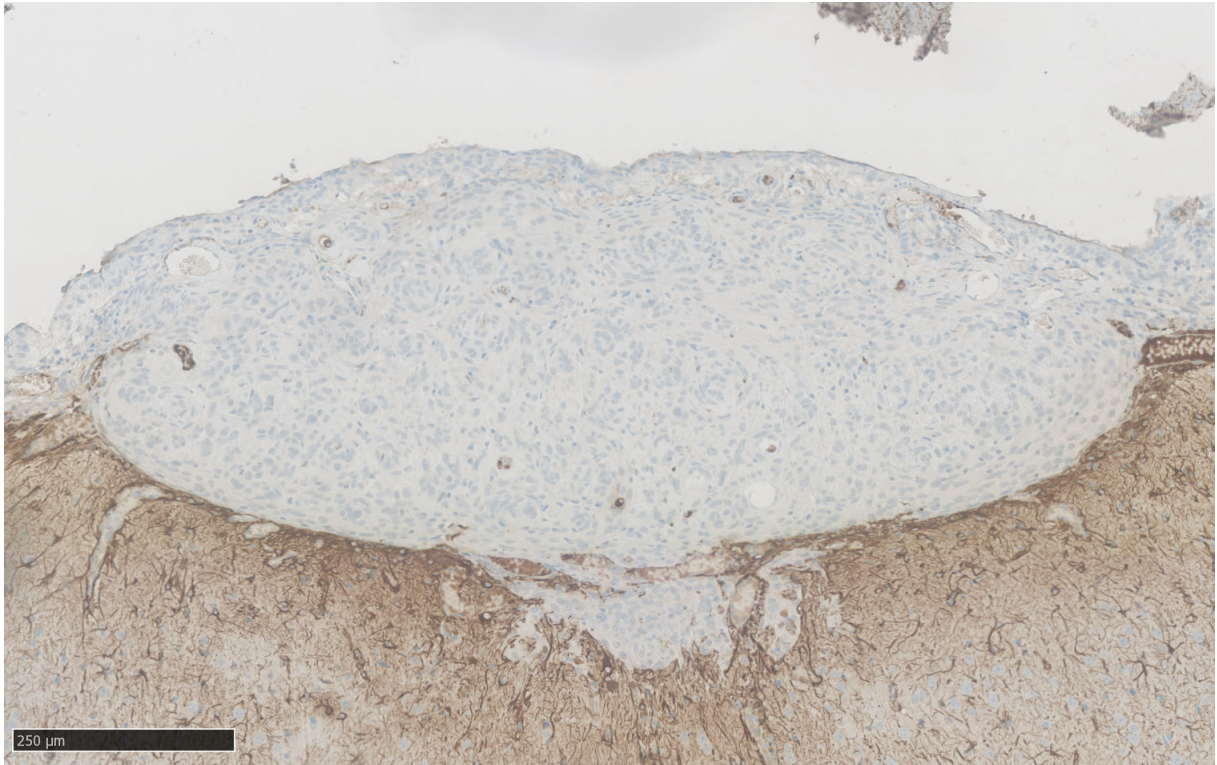


Supplemental material figure 8.3 Somatostatin receptor (SSTR) staining examples including scores. **A.** a primary patient-derived tumor. **B-E.** Xenografts from various tumors



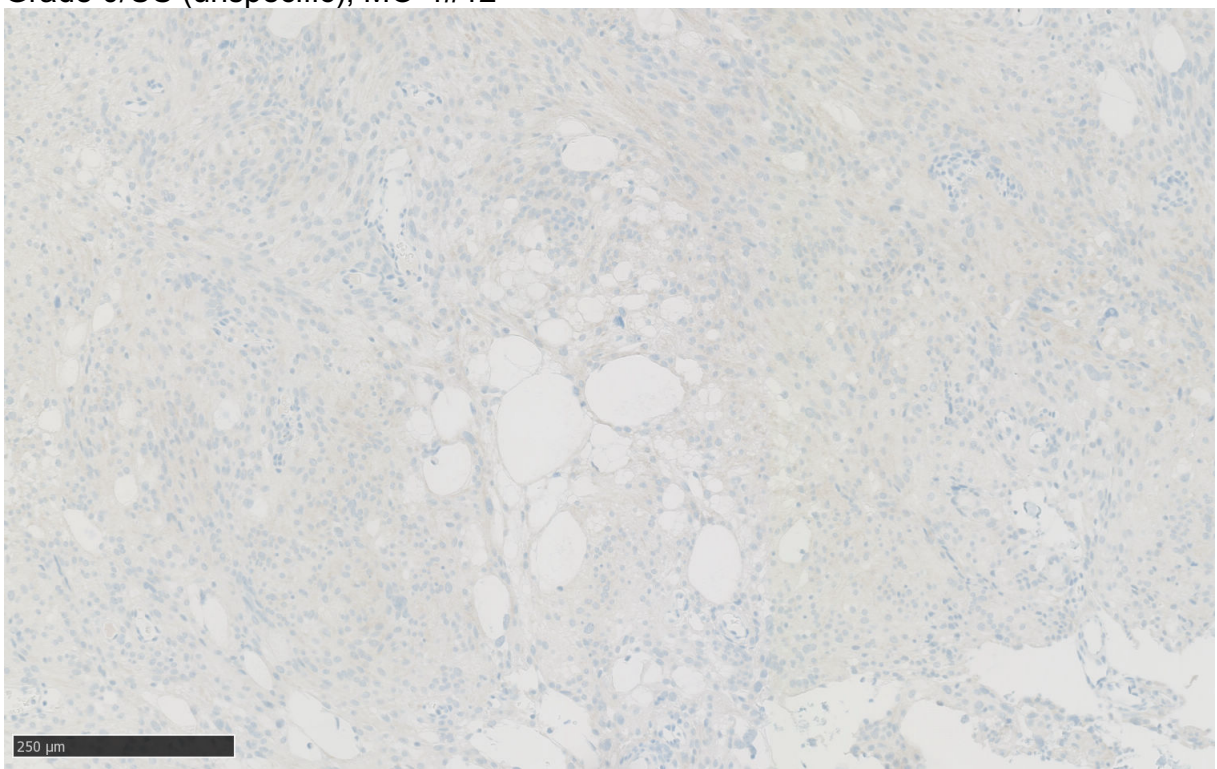
Supplemental material figure 8.4 Glial Fibrillary Acidic protein (GFAP) staining examples including scores. **A+B.** Xenograft and primary tumor sample examples showing no staining/unspecific staining.

Glial Fibrillary Acidic Protein – GFAP



250 μ m

Grade 0/US (unspecific), MO-4#12



250 μ m

Grade 0/US, MO-12-Tumor