

Cardiac automaticity is modulated by I_{KACH} in sinoatrial node during pregnancy.

Long V, El Gebeily G, Leblanc É, Senhadji M, Fiset C.

SUPPLEMENTAL DATA

Table S1. Sequences of primers.

Primers	Sequences
<i>Kcnj3</i>	Forward: 5' CAG TTC GAG GTT GTC GTC ATC C 3' Reverse: 5' CCC AAA GCA CTT CGT CCT CTG T 3'
<i>Kcnj5</i>	Forward: 5' GGA GAT GTC TCG TGC TCA ACT G 3' Reverse: 5' CCA GAG CAC CTC TGT ATC CAT G 3'
<i>Adora1</i>	Forward: 5' ATC CCT CTC CGG TAC AAG ACA GT 3' Reverse: 5' ACT CAG GTT GTT CCA GCC AAA C 3'
<i>Chrm2</i>	Forward: 5' GTC AGC AAT GCC TCC GTT AT 3' Reverse: 5' CCT ACG ATG AAC TGC CAG AA 3'
<i>Rgs4</i>	Forward: 5' AGT CAG ATT CCT GCG AAC AC 3' Reverse: 5' TCC TCG CTG TAT TCC GAC TT 3'
<i>Rgs6</i>	Forward: 5' AAT CTC AGG TTC TGG CTG TCT GTC 3' Reverse: 5' TTG CCA GAT TTC CTC CAC CCT CTT 3'
<i>Hprt</i>	Forward: 5' TGA ATC ACG TTT GTG TCA TTA GTG A 3' Reverse: 5' TTC AAC TTG CGC TCA TCT TAG G 3'
<i>Sdha</i>	Forward: 5' GAG GAA GCA CAC CCT CTC ATA 3' Reverse: 5' GCA CAG TCA GCC TCA TTC AA 3'
<i>Cyclo</i>	Forward: 5' CCG ATG ACG AGC CCT TGG 3' Reverse: 5' GCC GCC AGT GCC ATT ATG 3'

Cardiac automaticity is modulated by I_{KACH} in sinoatrial node during pregnancy.

Long V, El Gebeily G, Leblanc É, Senhadji M, Fiset C.

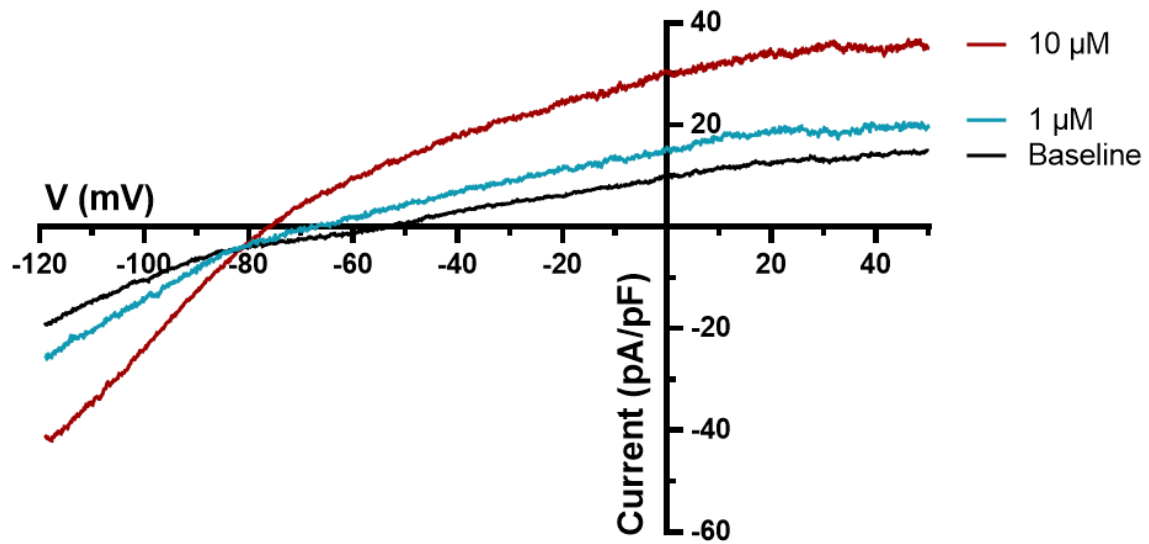


Figure S1. Activation of the G-protein-gated K^+ current I_{KACH} by carbachol (CCh). IV curves under baseline condition (black), in presence of CCh at 1 μ M (blue) and 10 μ M (red).

Cardiac automaticity is modulated by I_{KACH} in sinoatrial node during pregnancy.

Long V, El Gebeily G, Leblanc É, Senhadji M, Fiset C.

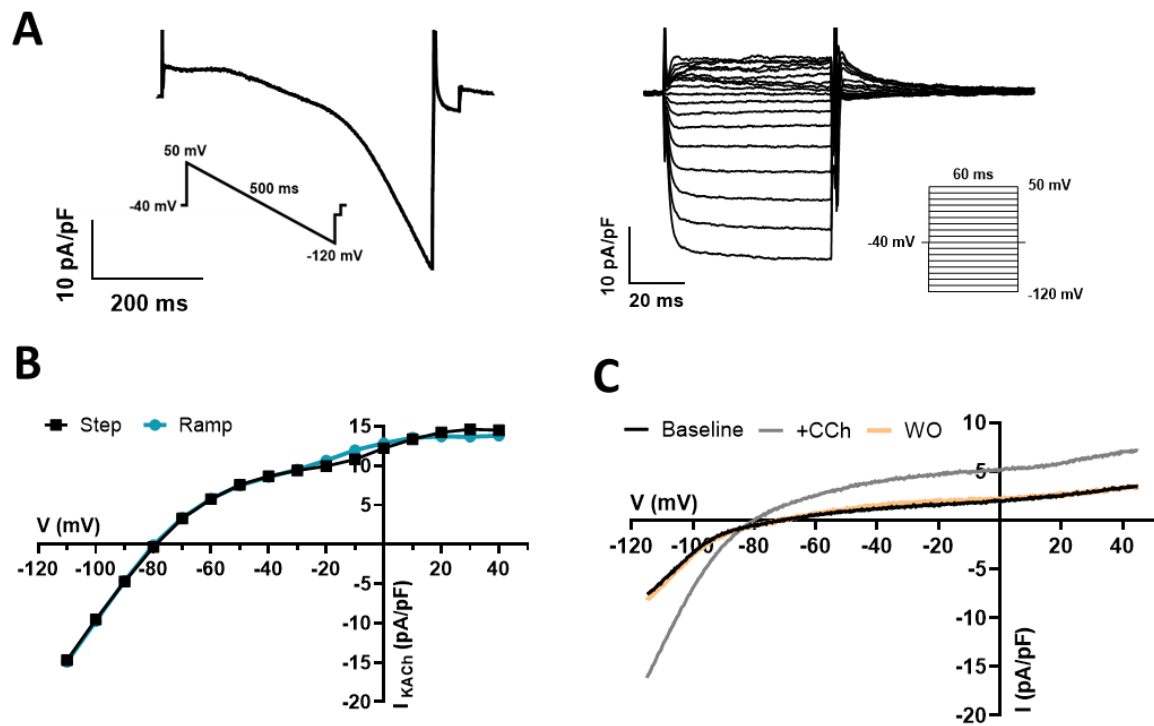


Figure S2. Comparison of a ramp and voltage-step protocol for I_{KACH} recording. (A)

Comparison of I_{KACH} recorded from a ramp (500 ms ramp from +50 mV to -120 mV with a holding potential of -40 mV) and a step (60-ms steps ranging between +50 mV to -120 mV in 10-mV increments from a holding potential of -40 mV) protocol on NP SAN cells. Insets show ramp and steps protocols. **(B)** Current-voltage (IV) curves of I_{KACH} recorded with both voltage-clamp protocols were comparable. **(C)** IV curves of baseline, acetylcholine-activated (+CCh; carbachol, 10 μ M) and washout (WO) current. Complete return to baseline values is observed in WO conditions.

Cardiac automaticity is modulated by I_{KACH} in sinoatrial node during pregnancy.

Long V, El Gebeily G, Leblanc É, Senhadji M, Fiset C.

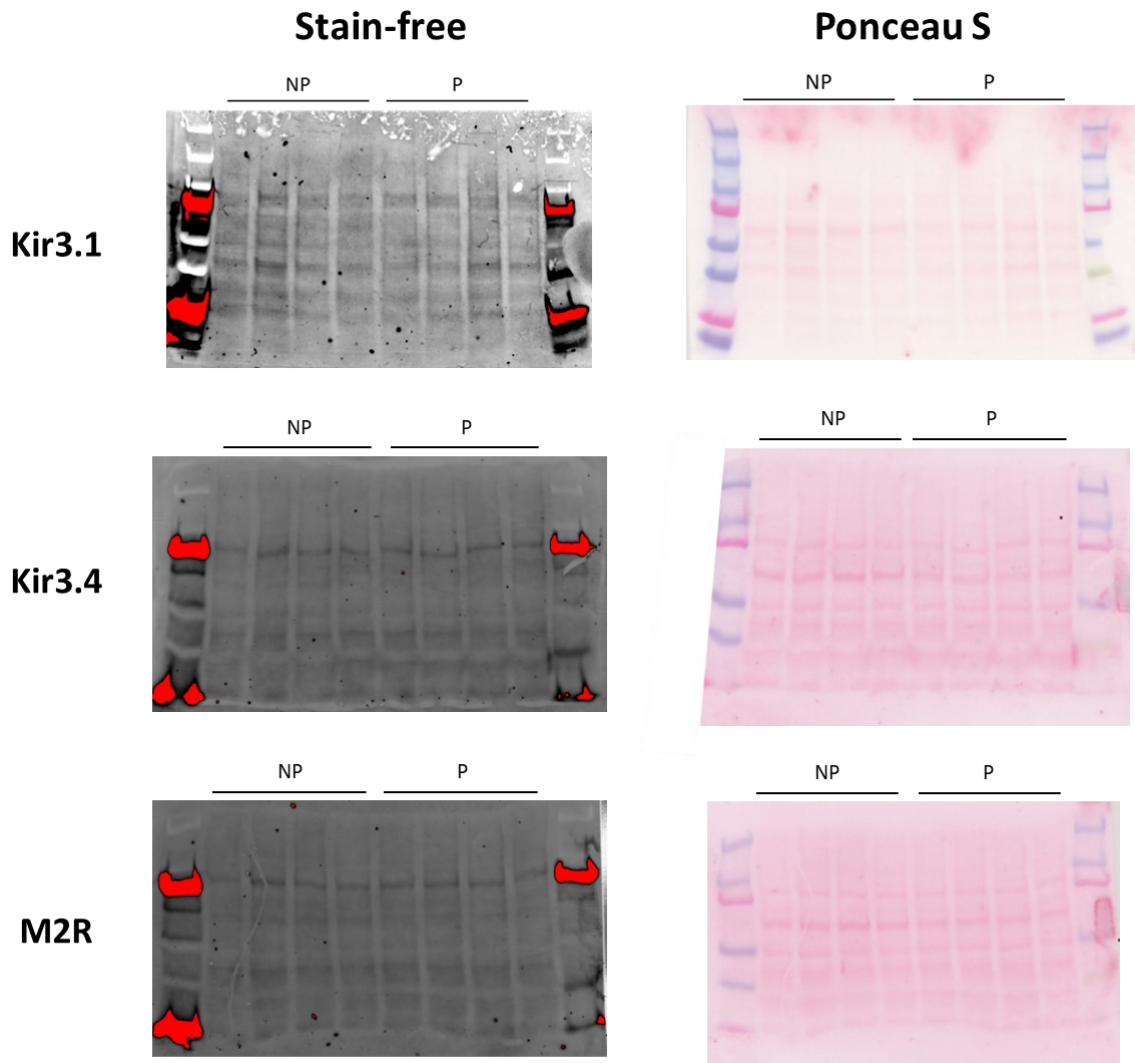


Figure S3. Stain-free blots used to normalize Kir3.1, Kir3.4 and M2R expression. (left) Protein (20 μ g) isolated from NP and P mice (N=4 per group) were visualized using stain-free technology. All visible bands were used for normalization of Kir3.1 (*upper*), Kir3.4 (*middle*) and M2R (*lower*). (**right**) Ponceau S of the nitrocellulose membrane right after the transfer and the stain-free image obtained with the ChemiDoc system.