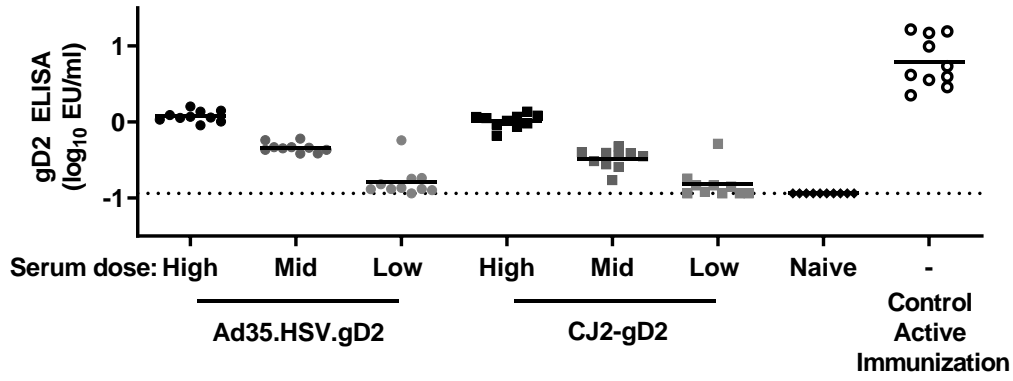
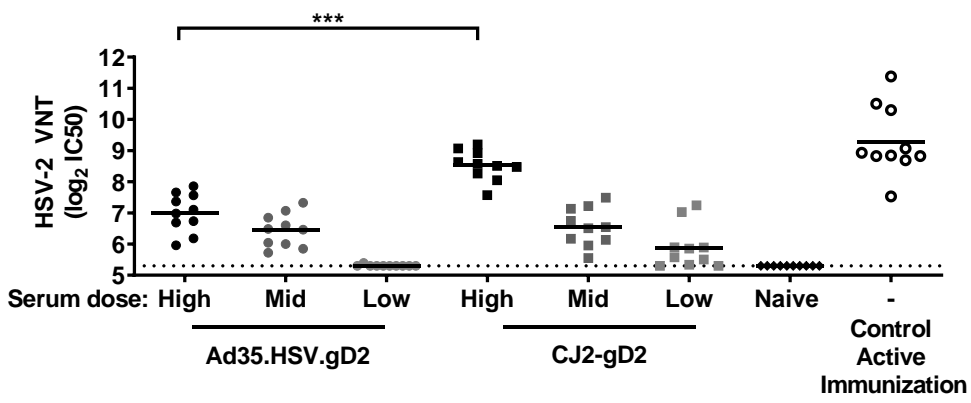


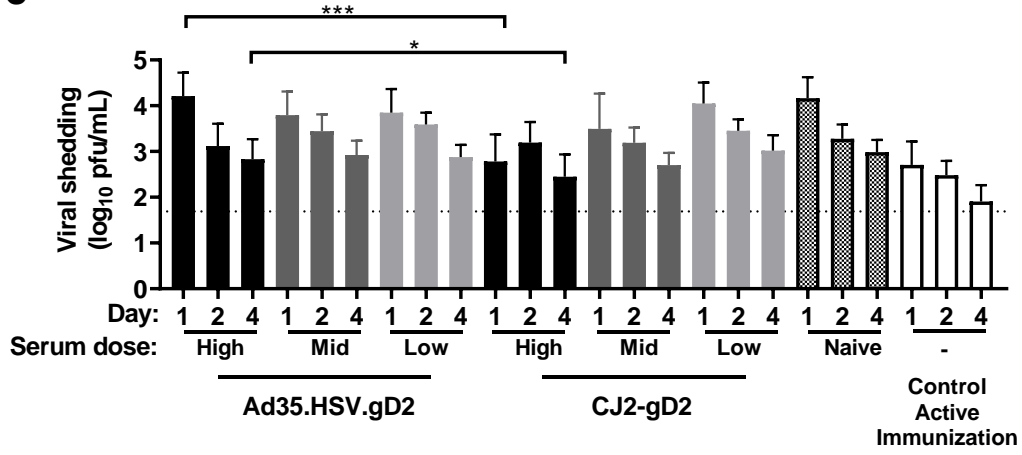
**a**



**b**



**c**



**Supplementary figure 3. Antibody levels in mice passively immunized with Ad35.HSV.gD2 and CJ2-gD2 immune serum.**

Naïve Balb/C mice (N=10/group) received three dilutions (High, Mid, Low) of serum pools from Ad35.HSV.gD2 or CJ2-gD2 immunized mice, respectively, 3 and 2 days before intravaginal challenge (0.5 ml serum/mouse/day). Serum pools were diluted to equal gD2 ELISA titers before serum transfer. Negative control mice received naïve serum pool. Positive control mice were actively immunized with Ad35.HSV.gD2 ( $10^{10}$  vp/mouse) 42 and 14 days before challenge. Mice were challenged intravaginally with 200LD50 HSV-2 G strain on day 0. Serum was collected at day -1 before challenge and **(a)** gD2 ELISA titers and **(b)** virus neutralization titers (VNT) were measured. **(c)** Viral shedding (shown as log<sub>10</sub> pfu/ml) was assessed by plaque assay on vaginal swabs collected on days 1, 2 and 4 after challenge. Dotted lines indicate the lower limit of quantification (LLoQ) or limit of detection (LOD) and horizontal lines indicate the mean value per group. **(a-c)** (Across dose) statistical comparison and **(a-c)** highest dose comparison was performed by ANOVA with Bonferroni correction. Results of statistical analysis are depicted by asterisks: \* $p < 0.05$ , \*\*\*  $p < 0.001$ ; results  $p > 0.05$  (not significant) are not shown.