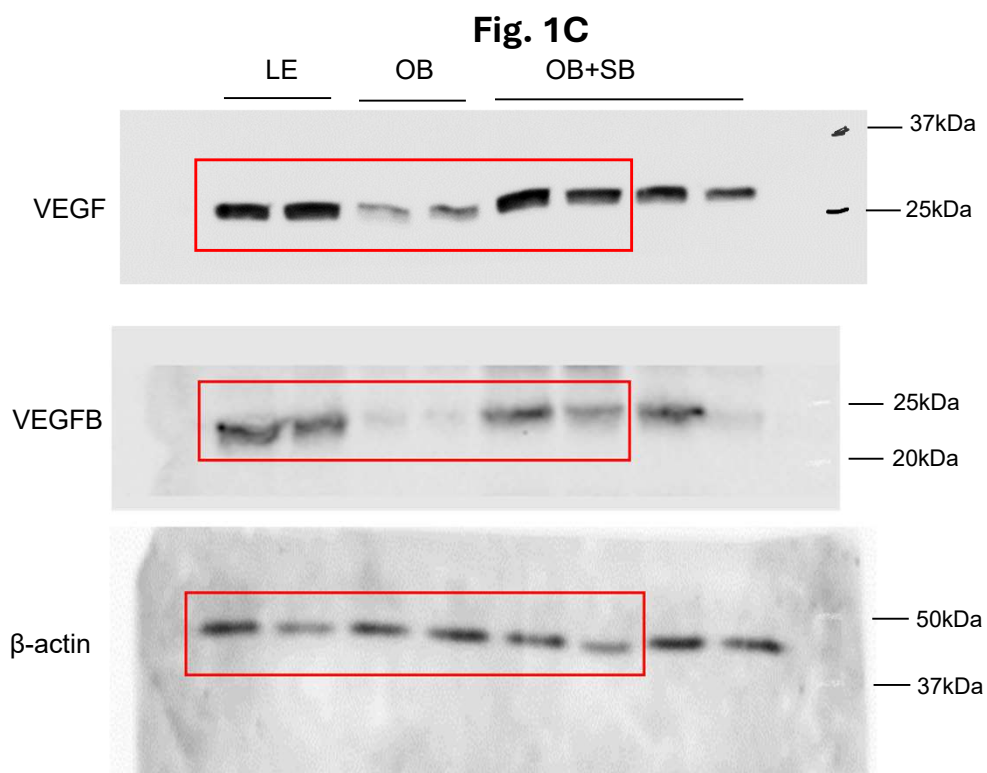
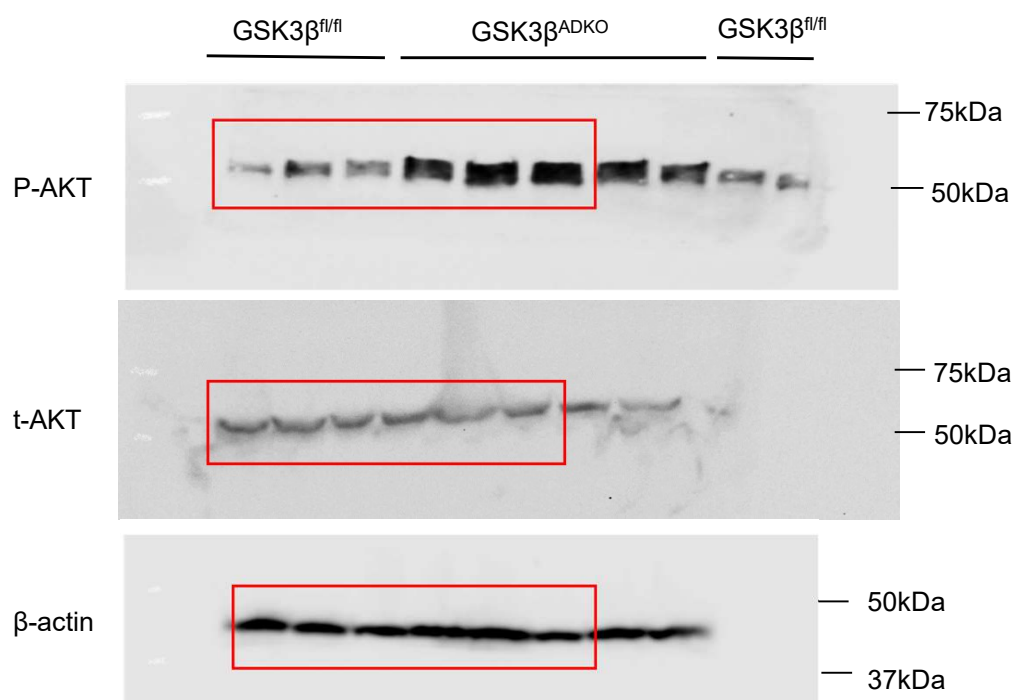


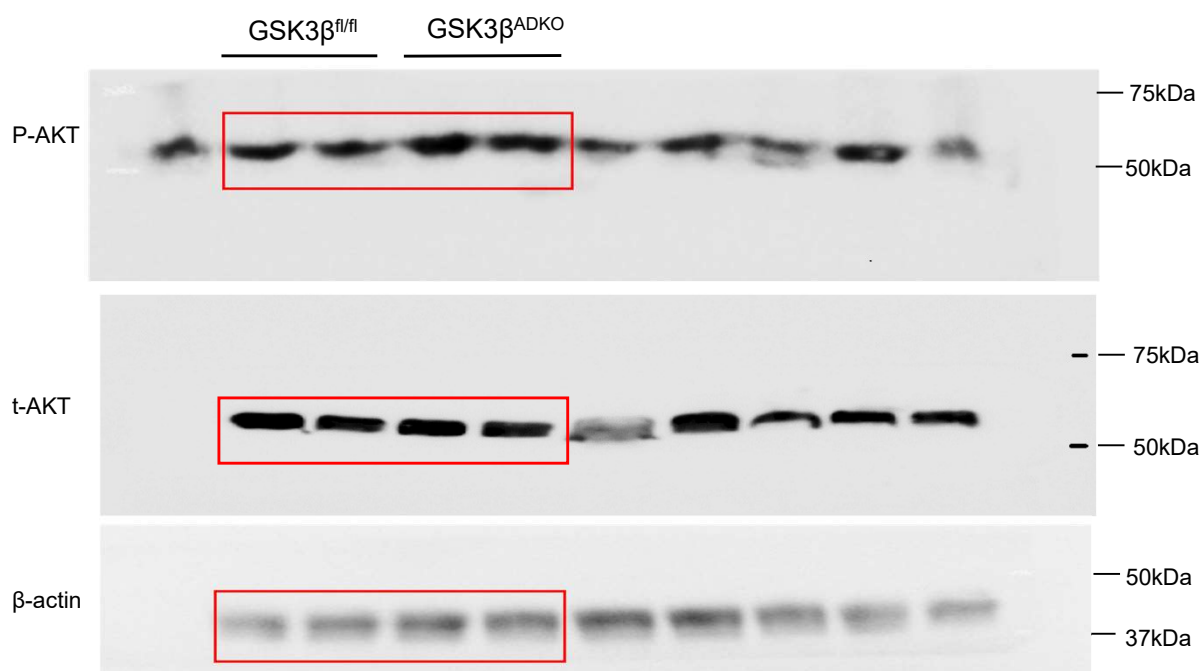
Uncut gel blots



Full unedited gel for Figure 1C. The red rectangle indicates the portion of the blot displayed in the manuscript.

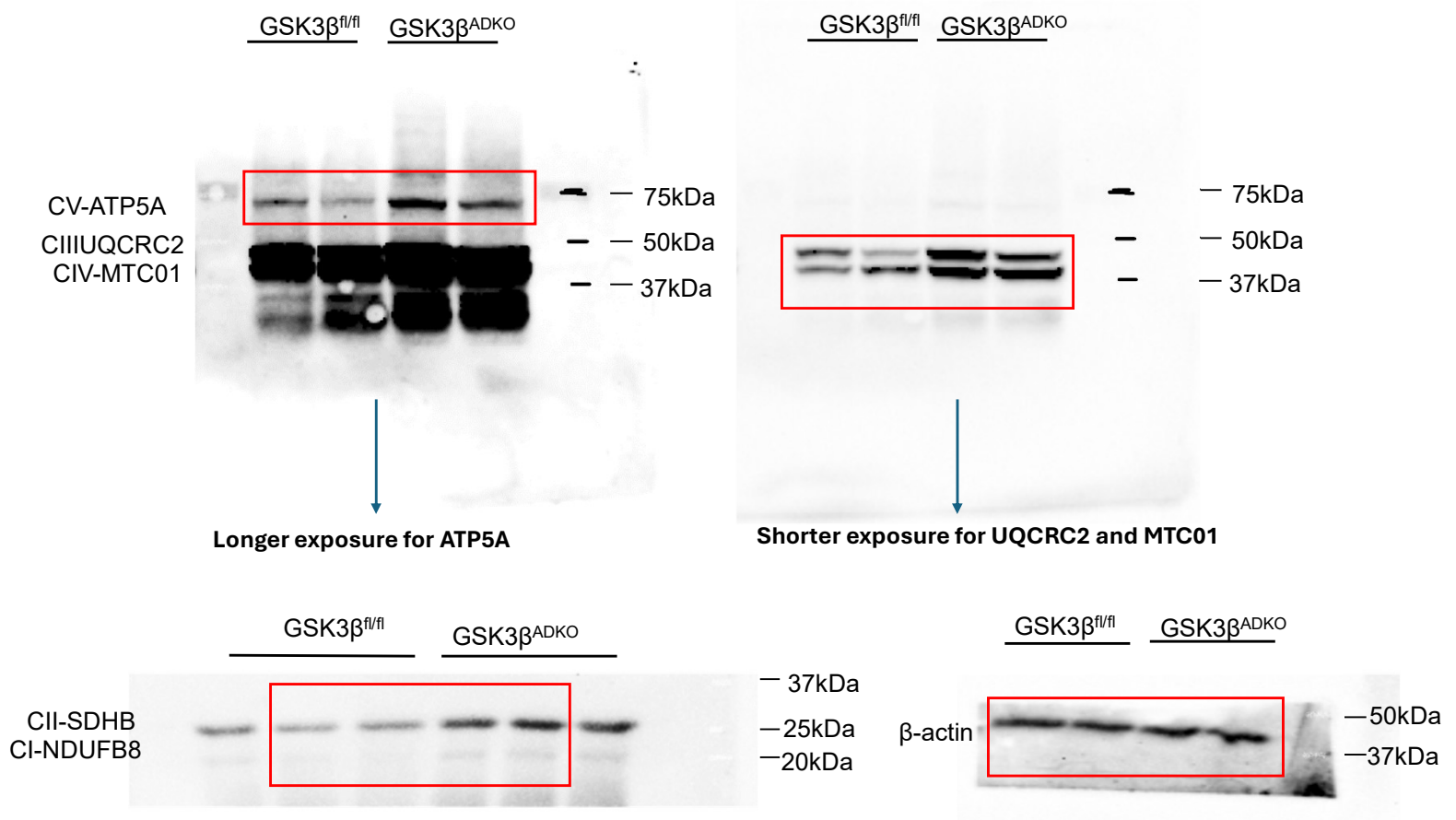
Fig. 2L

Full unedited gel for Figure 2L. The red rectangle indicates the portion of the blot displayed in the manuscript.

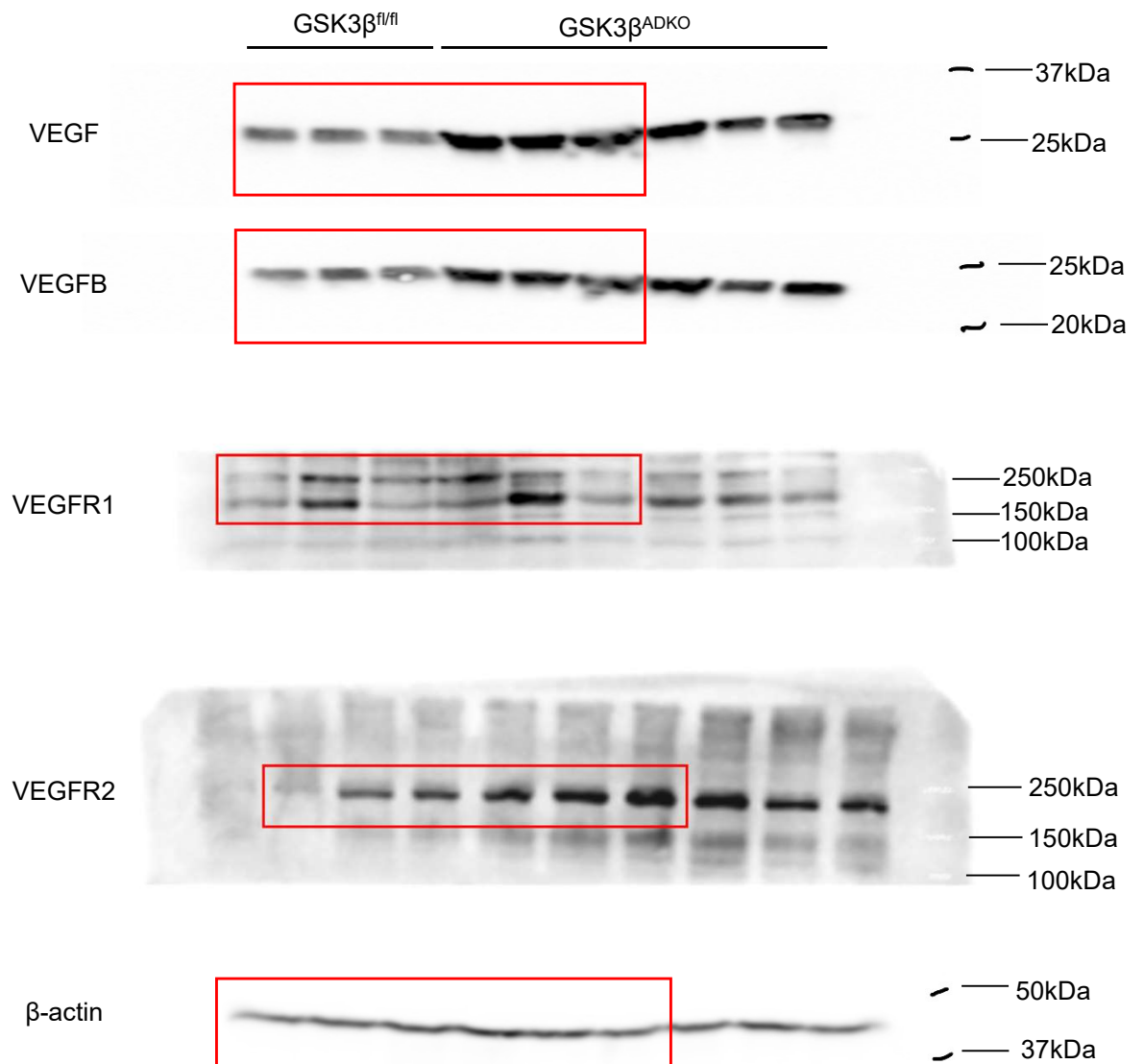
Fig. 2M

Full unedited gel for Figure 2M. The red rectangle indicates the portion of the blot displayed in the manuscript.

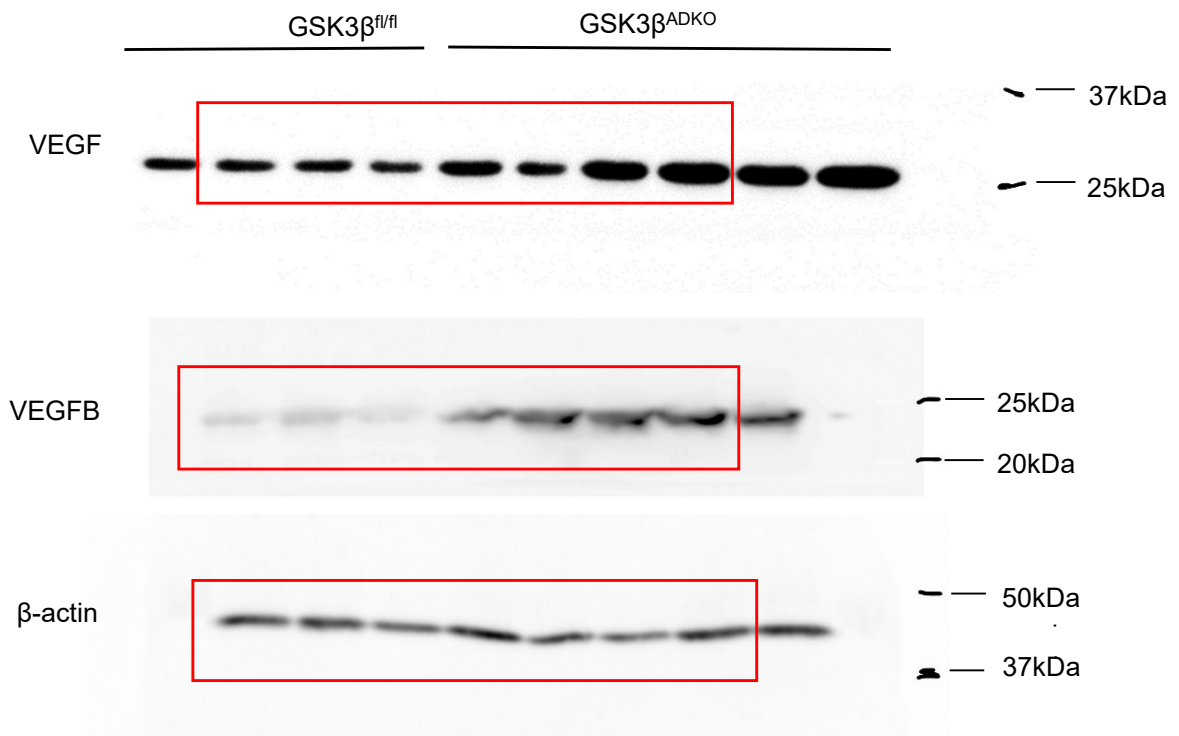
Fig. 3H



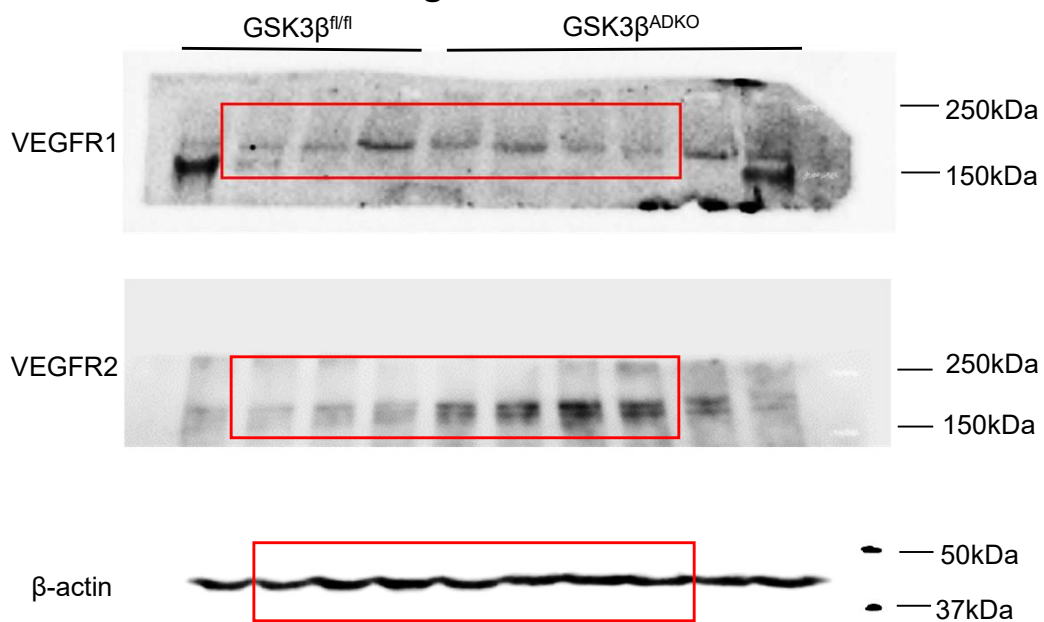
Full unedited gel for Figure 3H. The red rectangle indicates the portion of the blot displayed in the manuscript.

Fig 4D

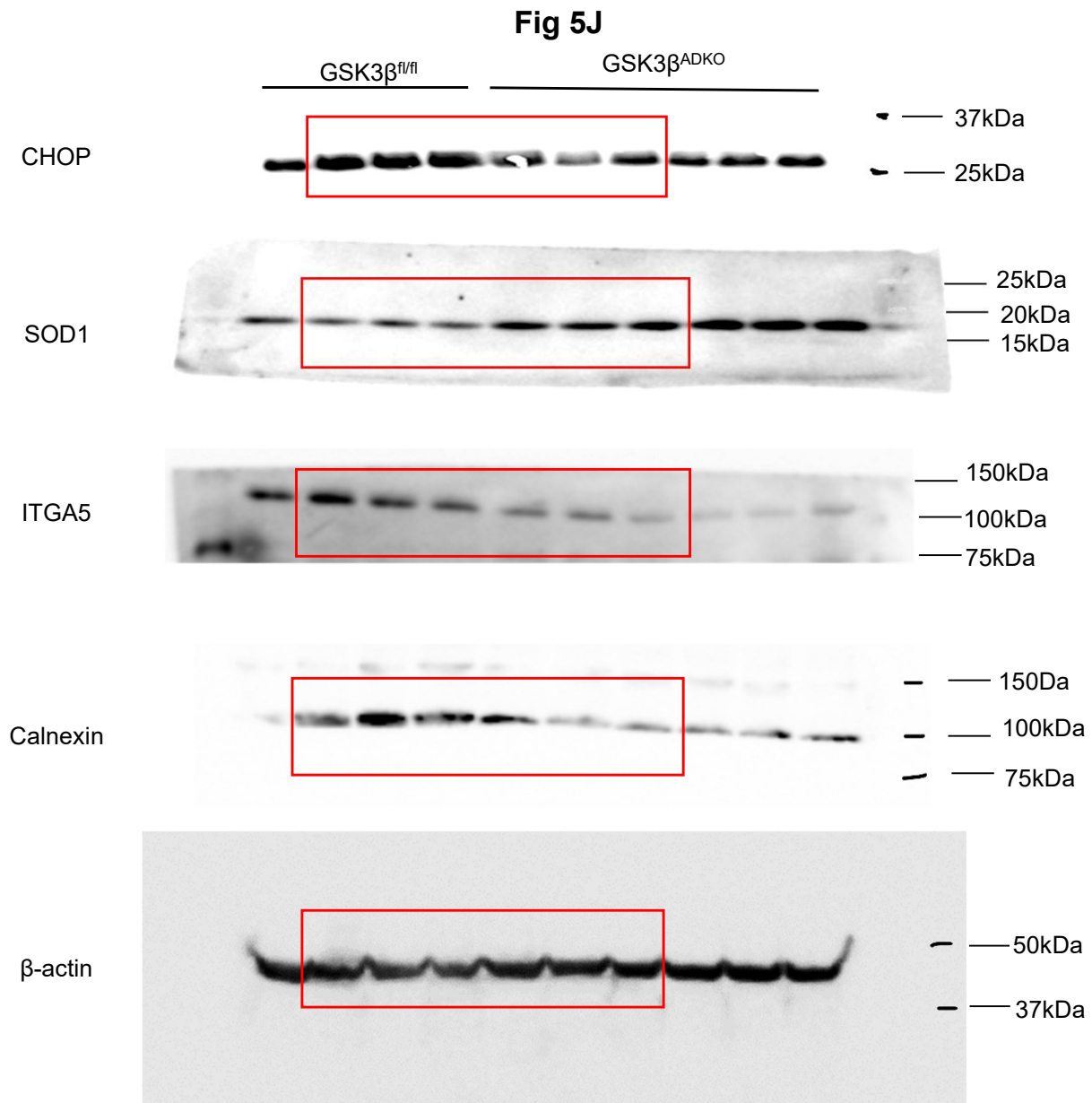
Full unedited gel for Figure 4D. The red rectangle indicates the portion of the blot displayed in the manuscript.

Fig 4F

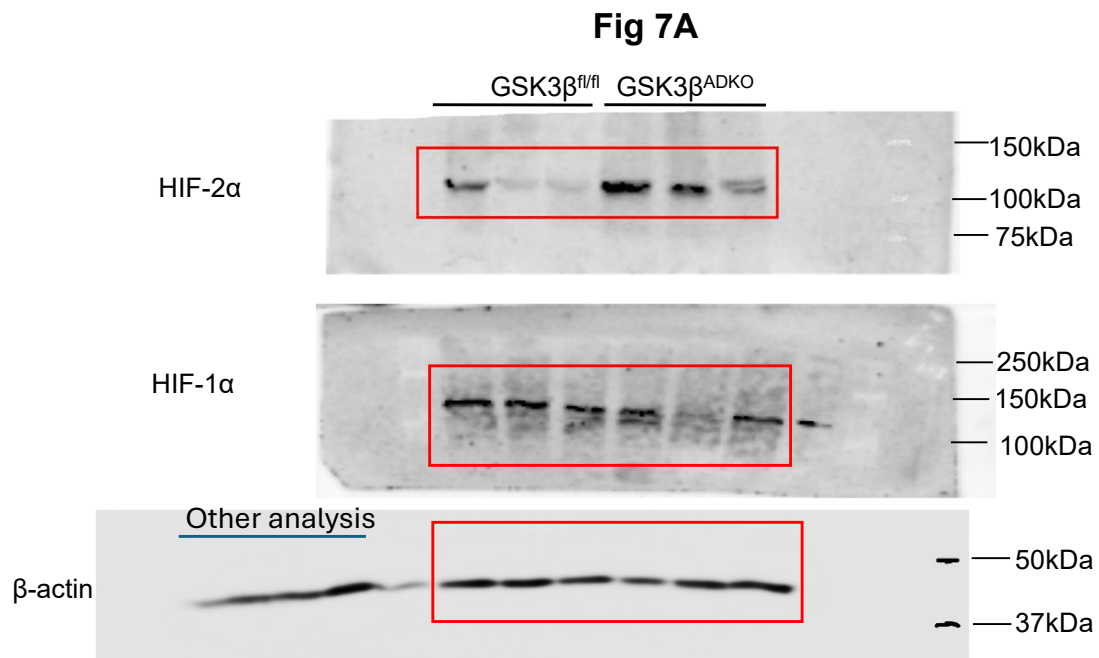
Full unedited gel for Figure 4F. The red rectangle indicates the portion of the blot displayed in the manuscript.

Fig 4G

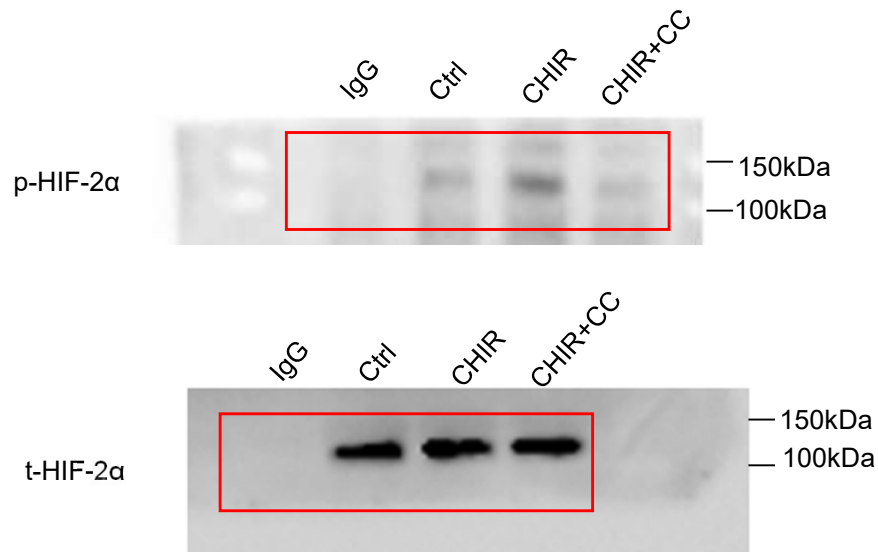
Full unedited gel for Figure 4G. The red rectangle indicates the portion of the blot displayed in the manuscript.



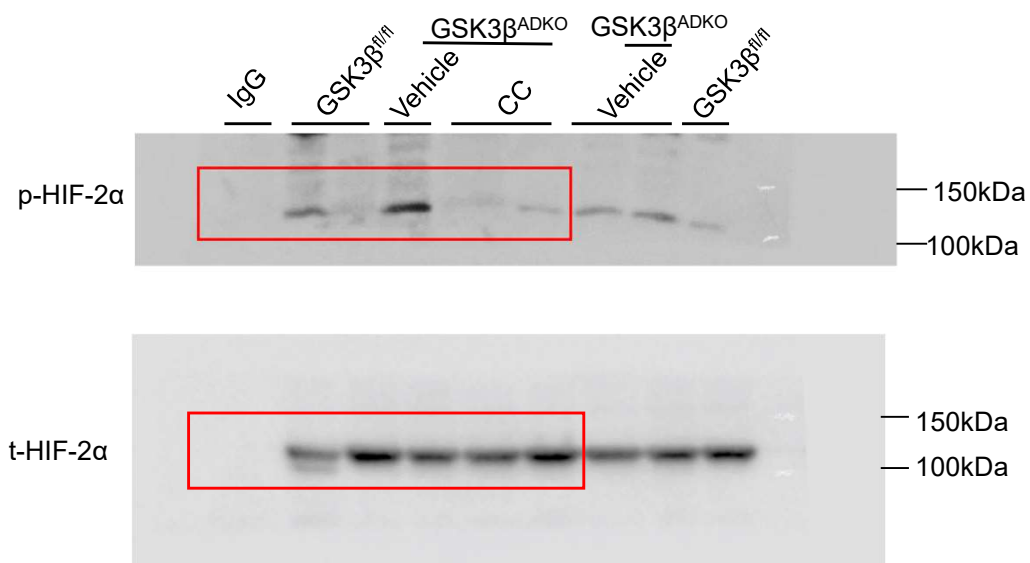
Full unedited gel for Figure 5J. The red rectangle indicates the portion of the blot displayed in the manuscript.



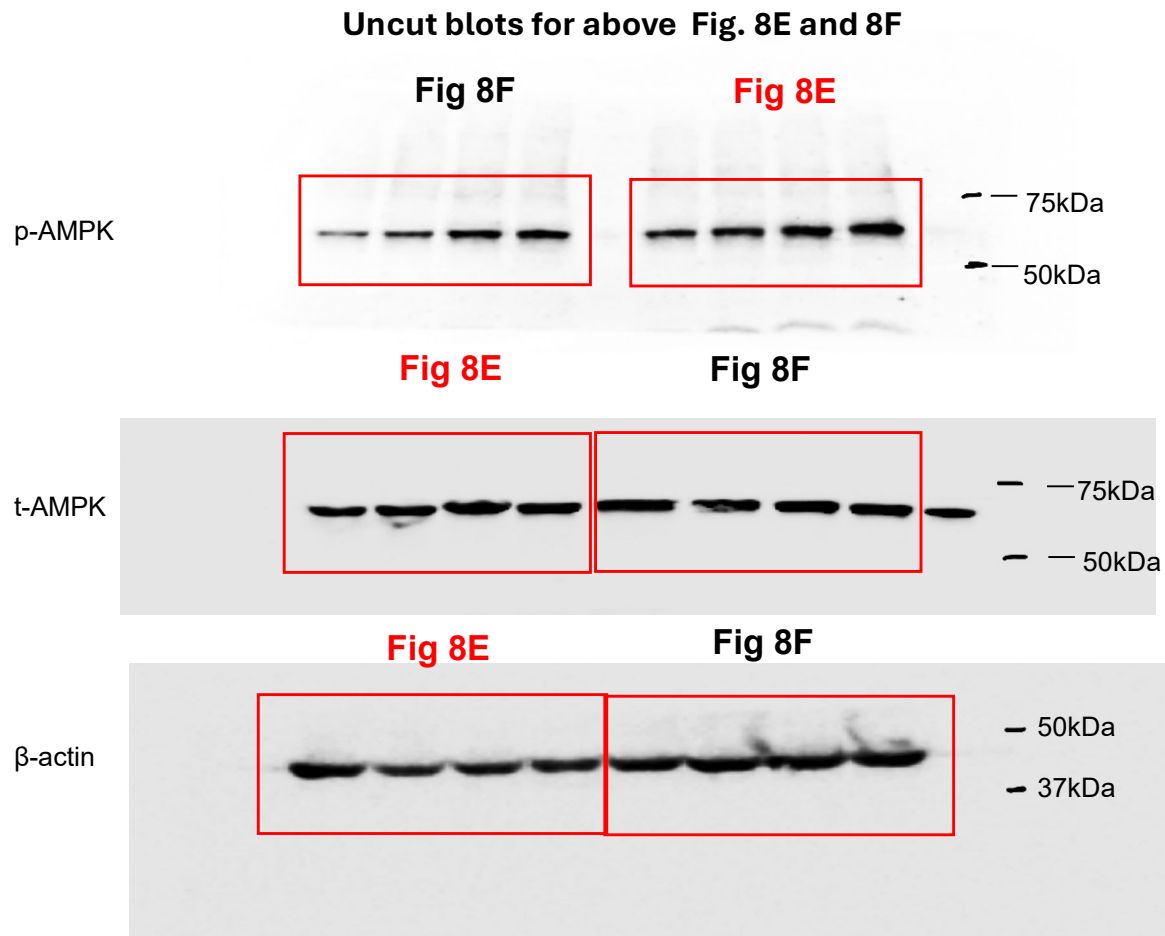
Full unedited gel for Figure 7A. The red rectangle indicates the portion of the blot displayed in the manuscript.

Fig 8C

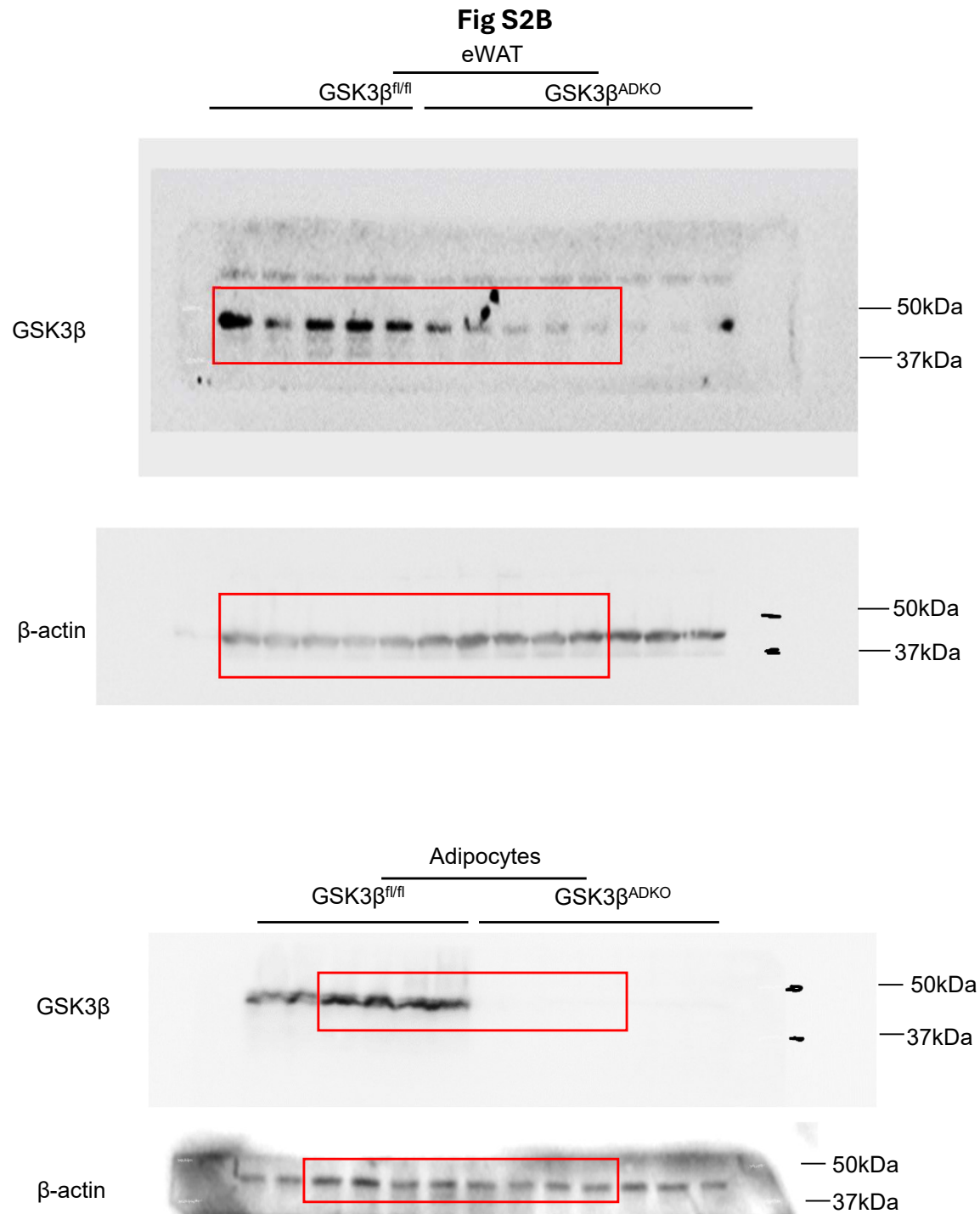
Full unedited gel for Figure 8C. The red rectangle indicates the portion of the blot displayed in the manuscript.

Fig 8D

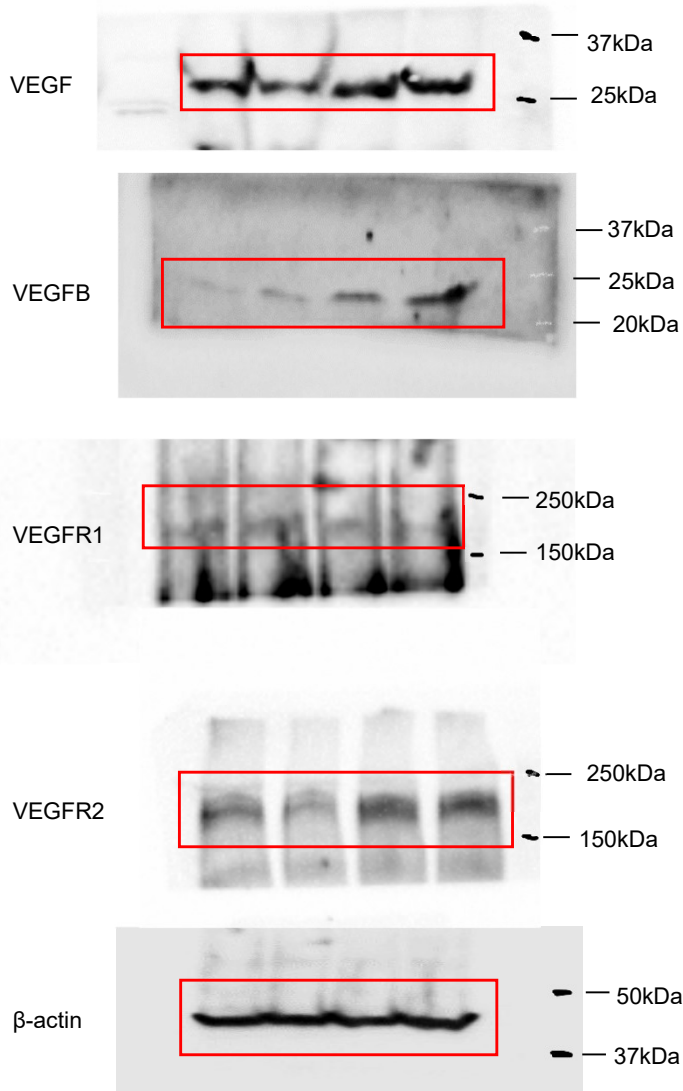
Full unedited gel for Figure 8D. The red rectangle indicates the portion of the blot displayed in the manuscript.



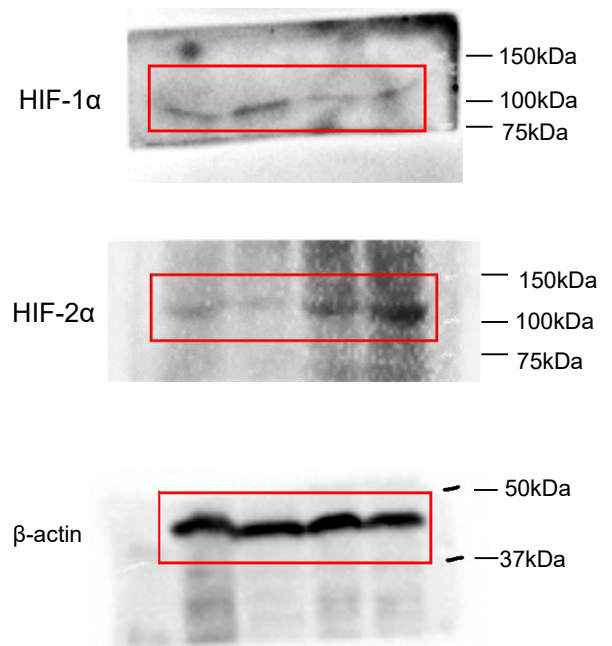
Full unedited gel for Figure 8E (in red words) and 8F (in black words). The red rectangle indicates the portion of the blot displayed in the manuscript.



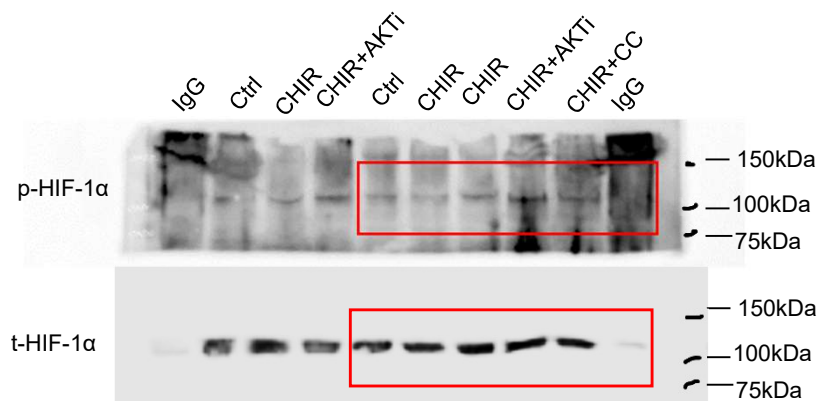
Full unedited gel for Figure S2B. The red rectangle indicates the portion of the blot displayed in the manuscript.

Fig S6G

Full unedited gel for Figure S6G. The red rectangle indicates the portion of the blot displayed in the manuscript.

Fig S9C

Full unedited gel for Figure S9C. The red rectangle indicates the portion of the blot displayed in the manuscript.

Fig S10G

Full unedited gel for Figure S10G. The red rectangle indicates the portion of the blot displayed in the manuscript.