

Supplementary materials

Title:

Renal glomerular and tubular injury in the Offspring of the Preeclampsia-Like Syndrome

Authors:

Yong Wang^{1#}, Hao Wang^{1#}, Huiqing Lu¹, Ji Ma¹, Wei Wu¹, Yinan Wang¹, Bo Ma¹, Hao Zhu^{1*}, Rong Hu^{1*}

Correspondence:

irios@126.com; hurong@fudan.edu.cn

Affiliation:

¹The Obstetrics and Gynecology Hospital of Fudan University

Fig 3 AQP Control

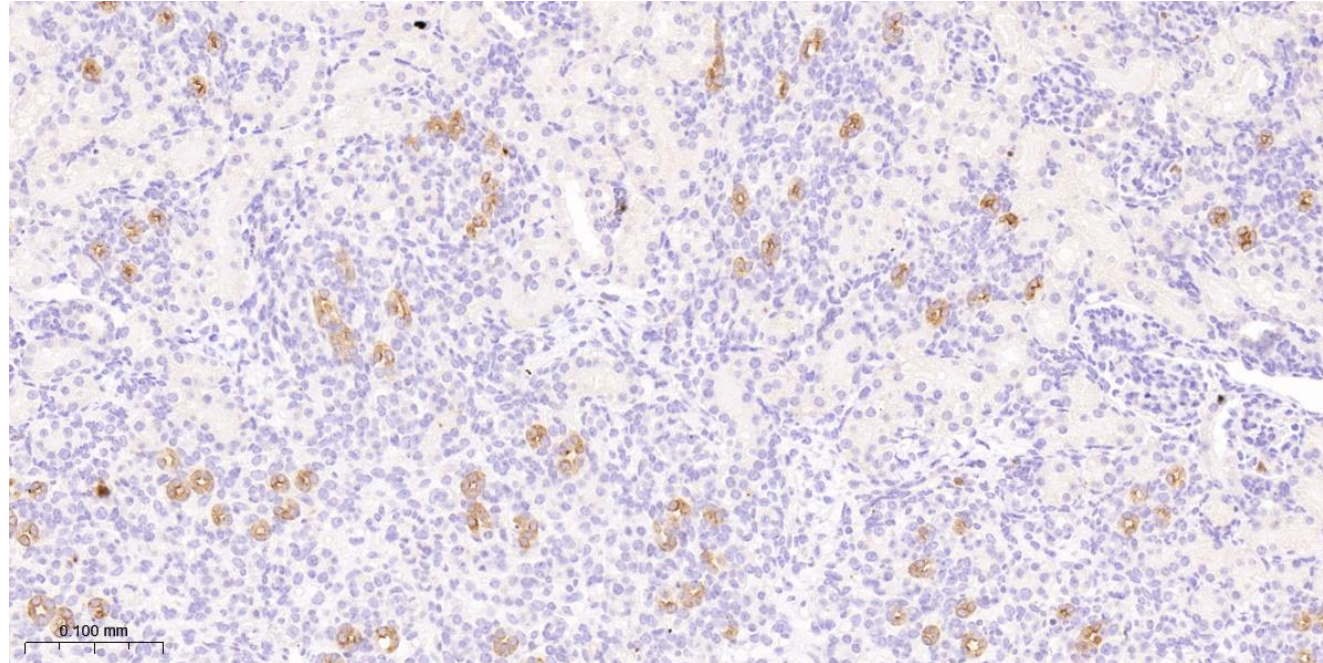


Fig 3 AQP LAME

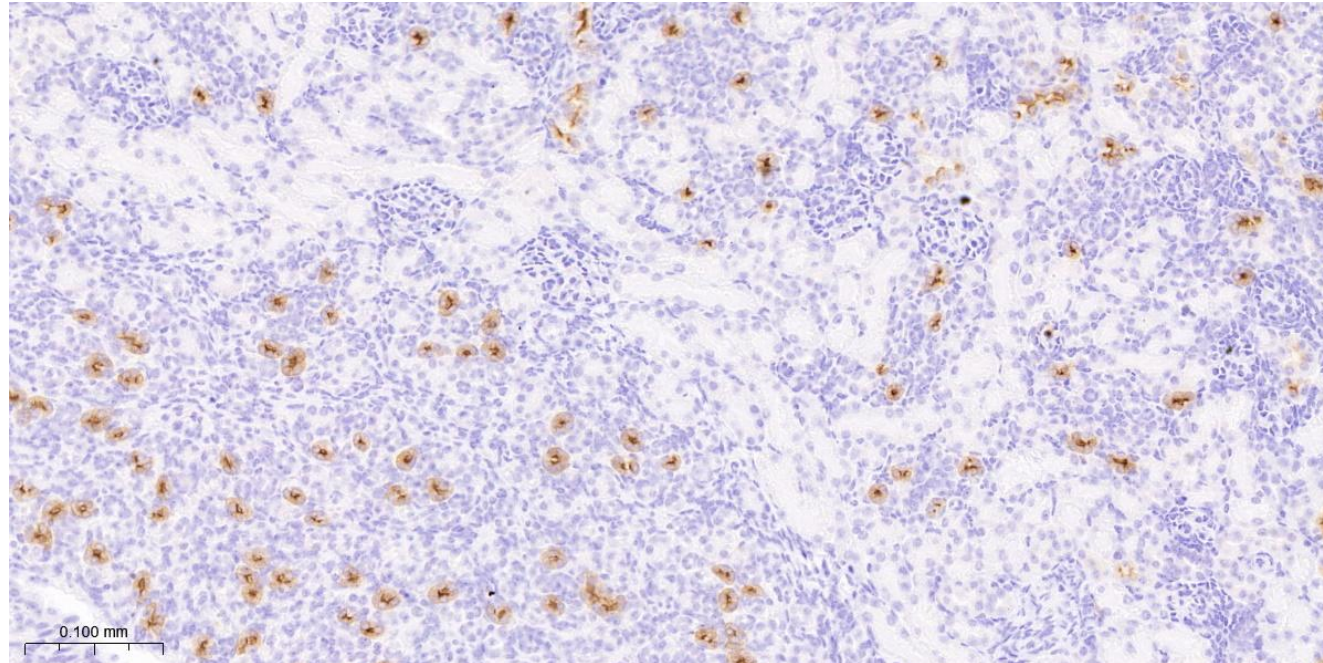


Fig 4 AQP control female

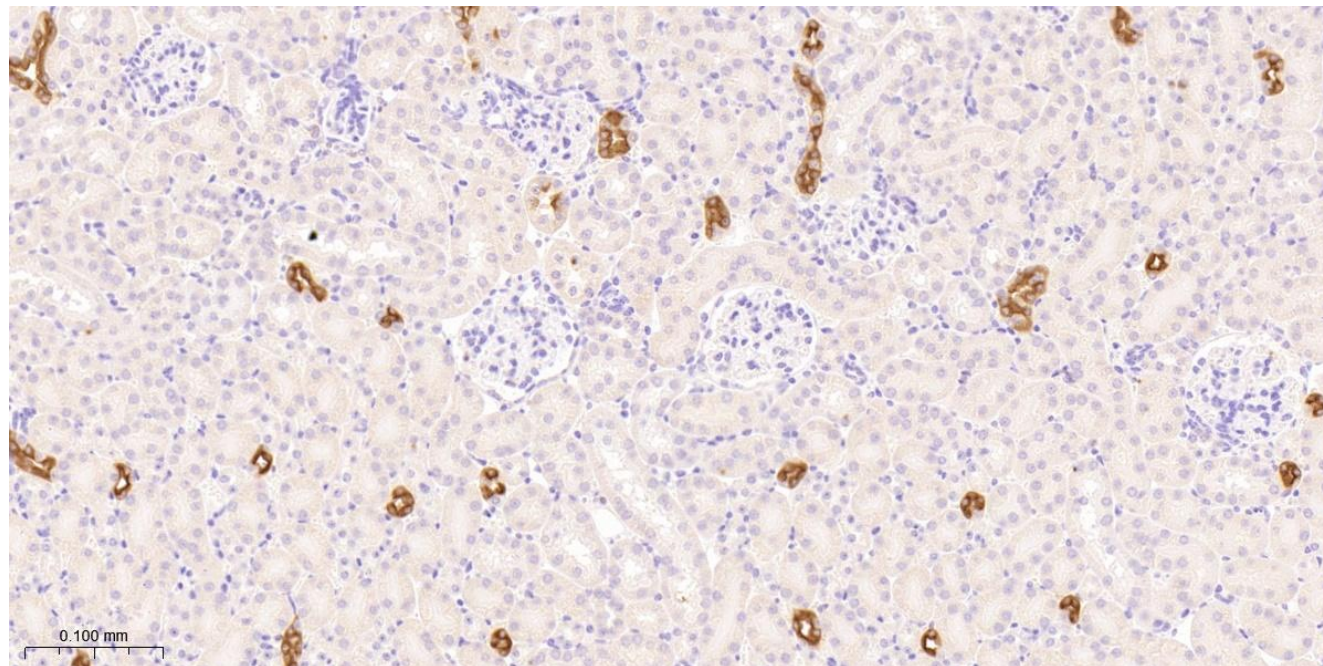


Fig 4 AQP control male

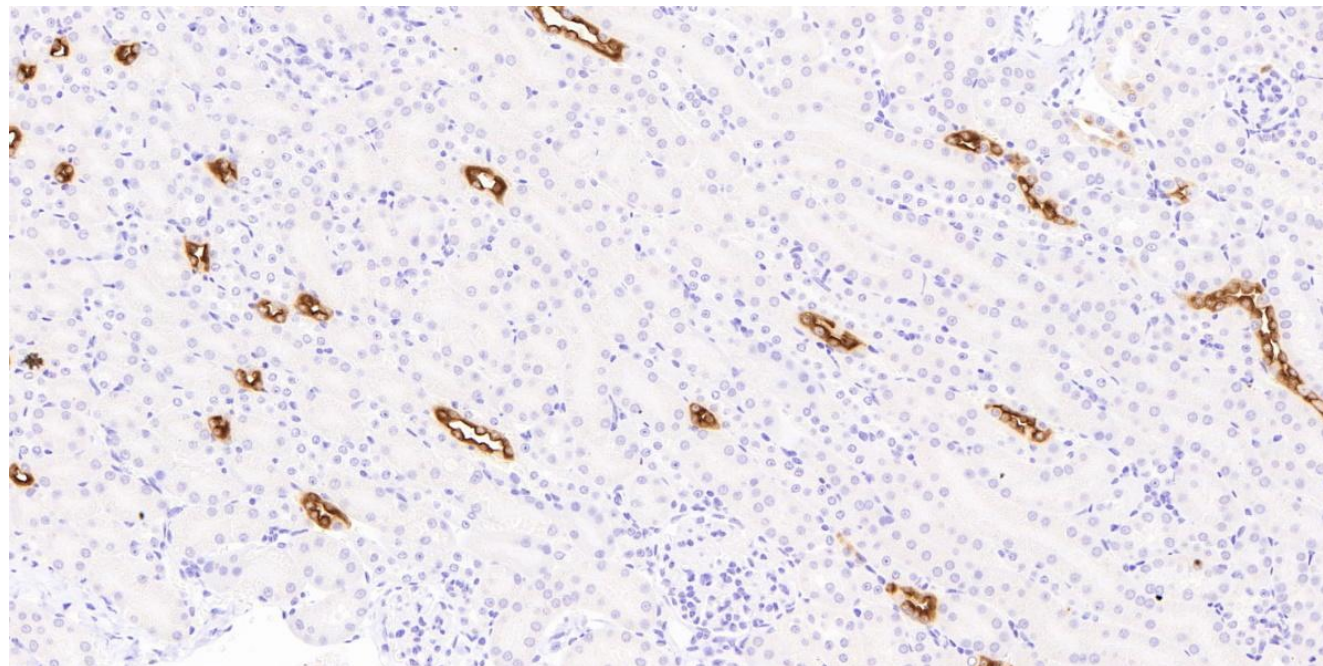


Fig 4 AQP LAME female

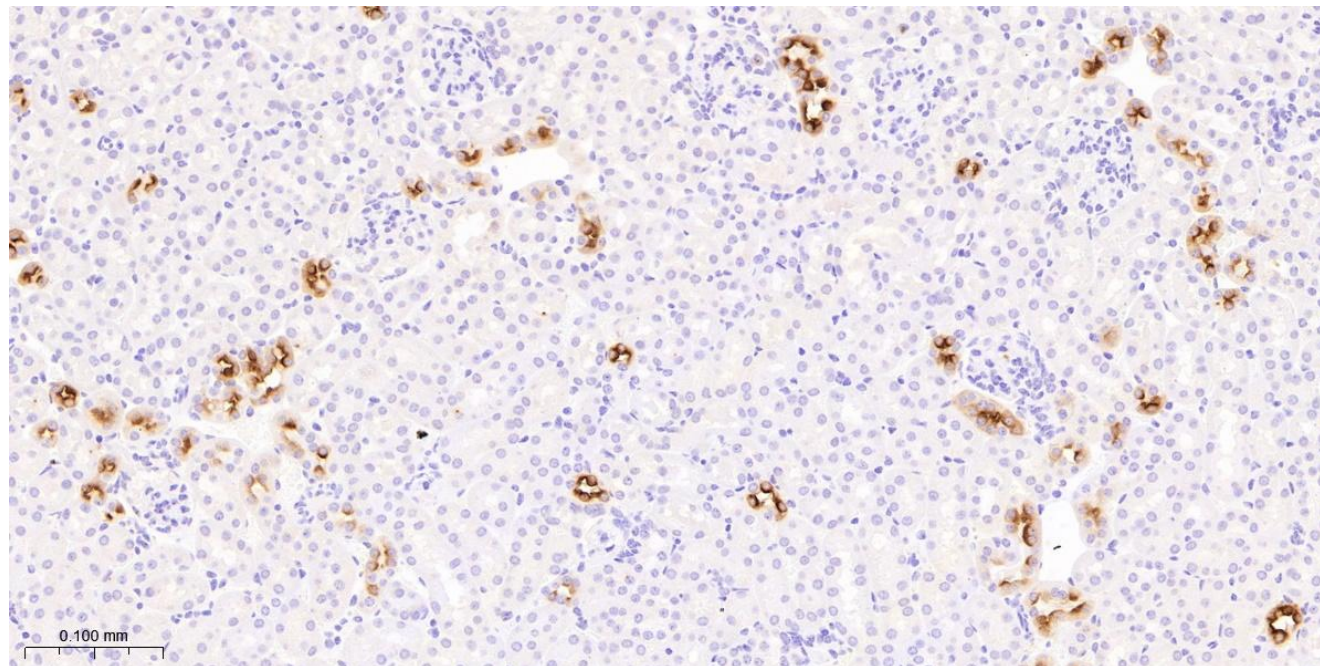


Fig 4 AQP LAME male

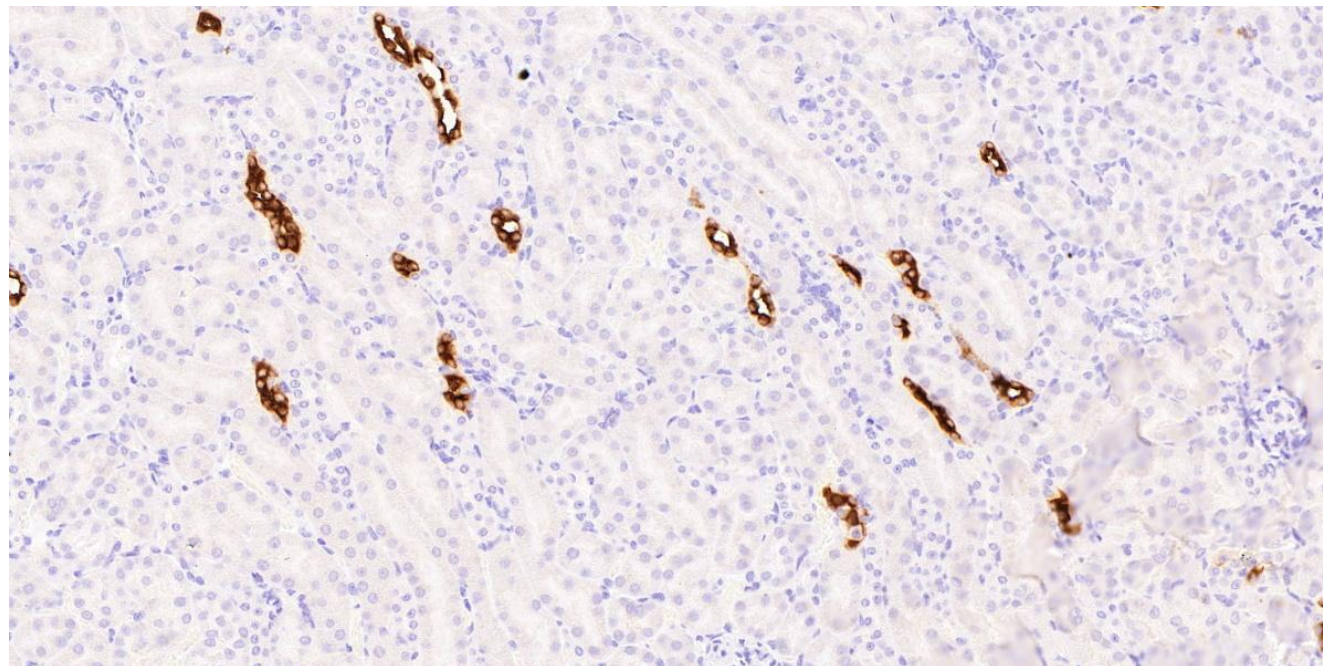


Fig 3 AT1R control

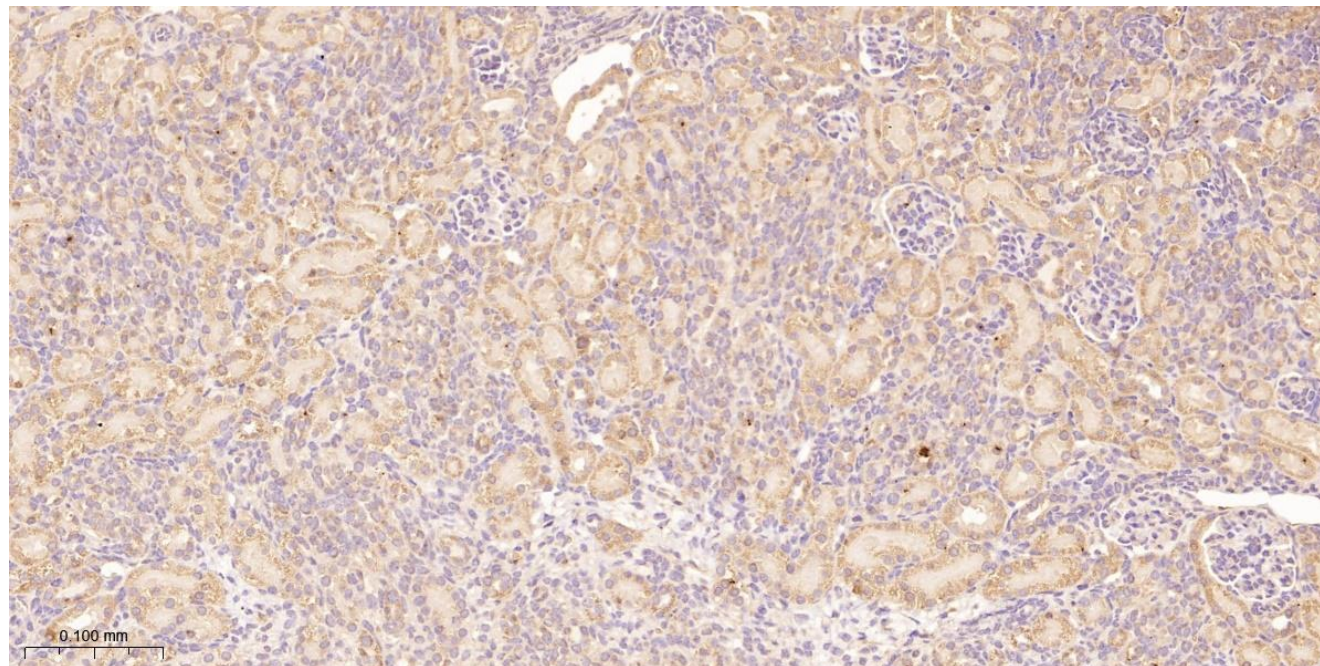


Fig 3 AT1R LAME

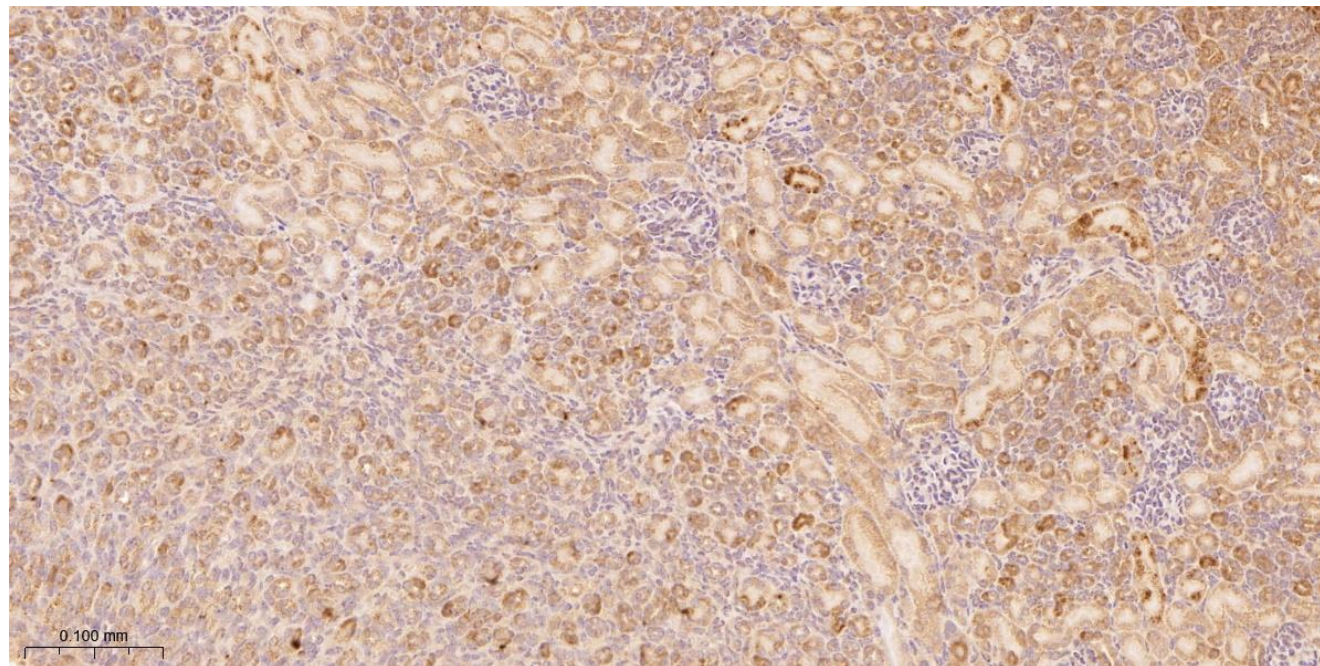


Fig 4 AT1R control female

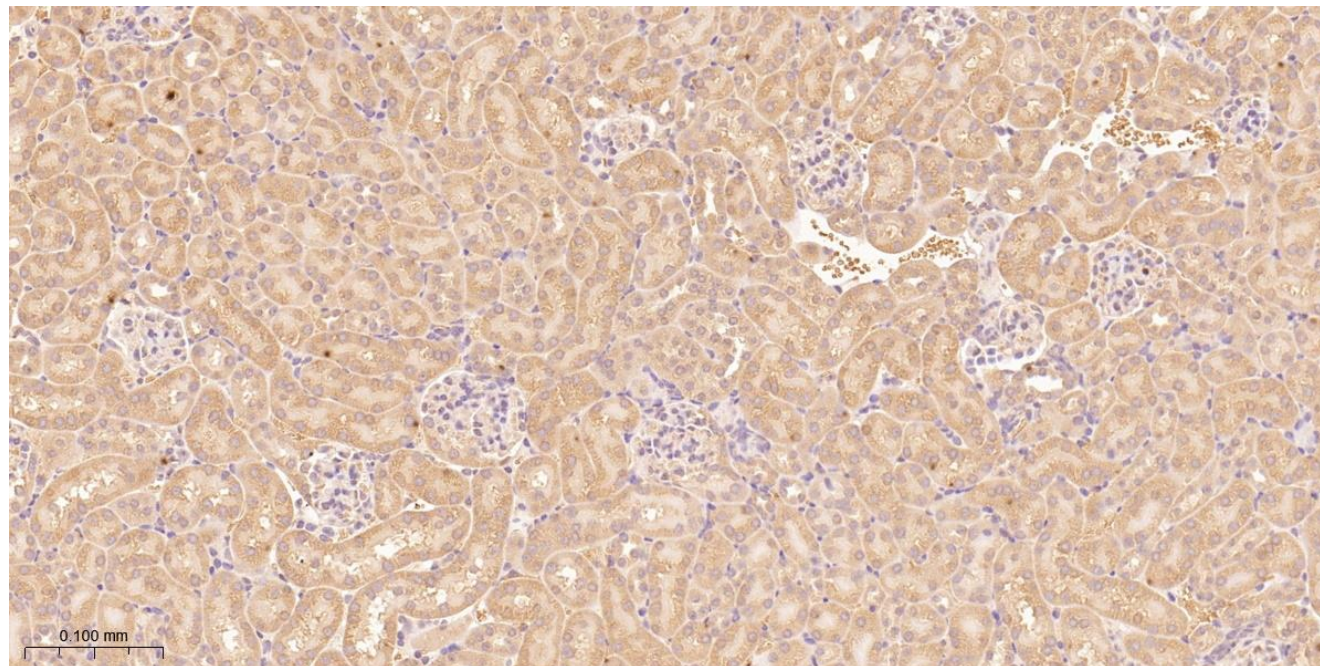


Fig 4 AT1R control male

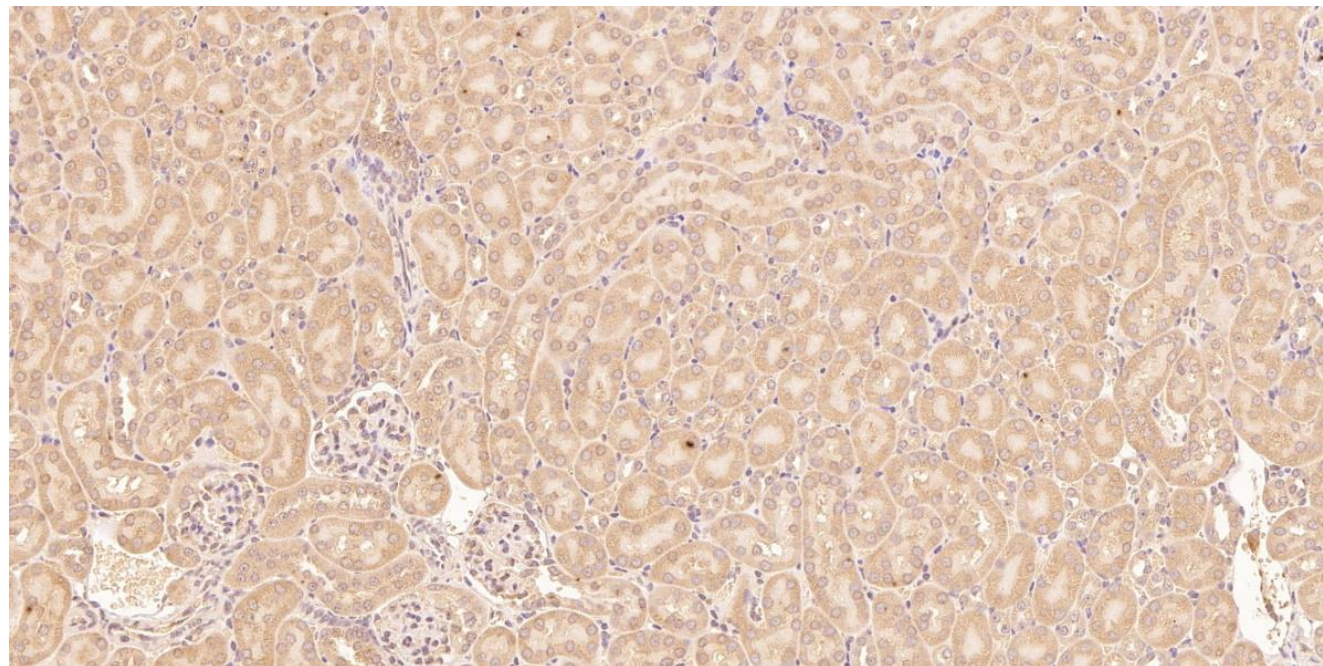


Fig 4 AT1R LAME female

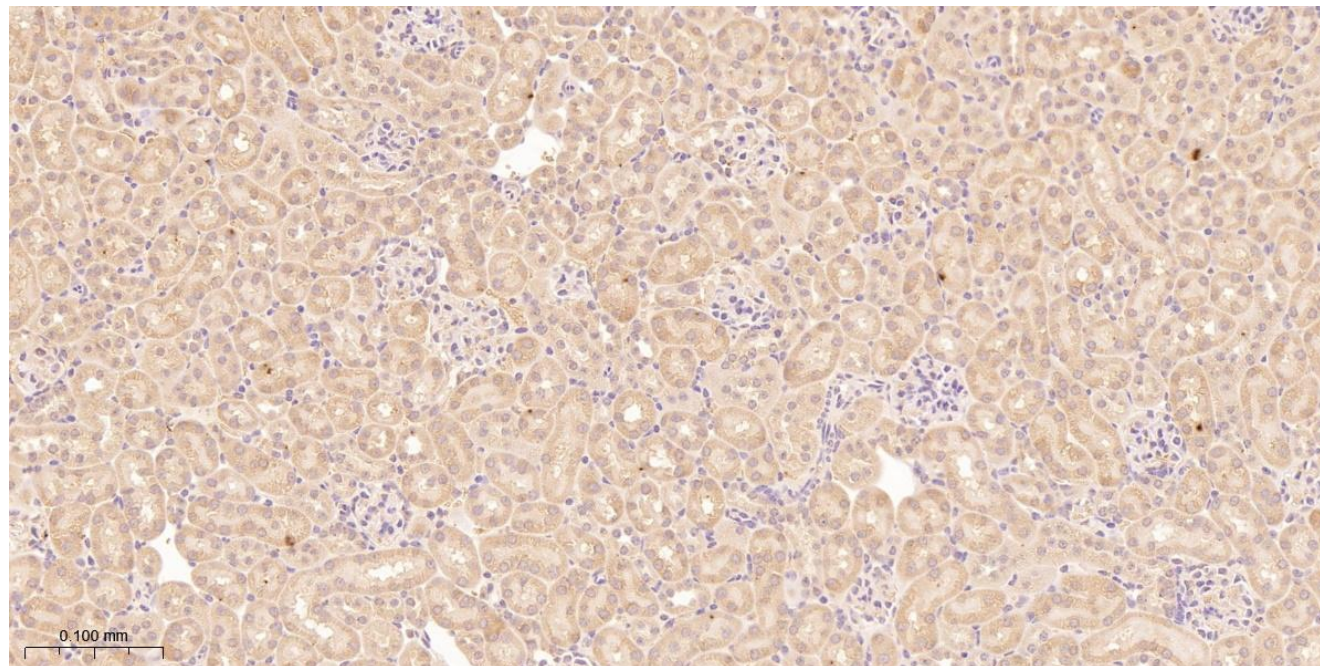


Fig 4 AT1R LAME male

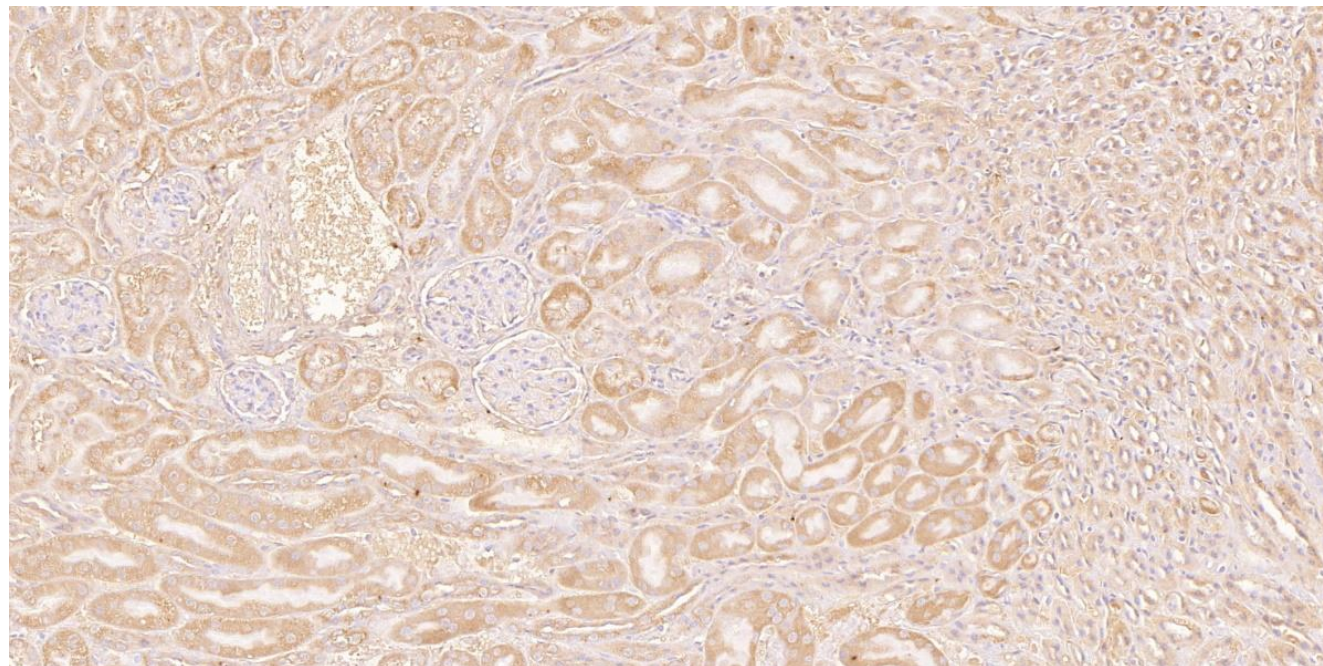


Fig 3 ENAC control

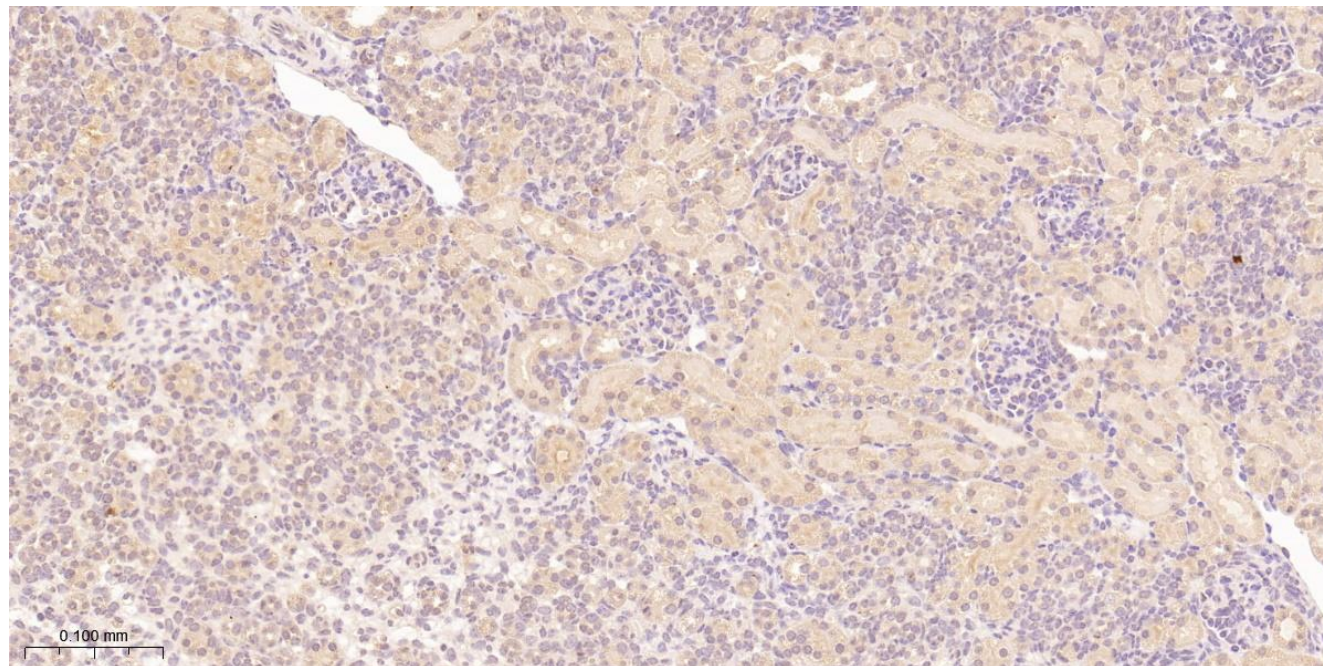


Fig 3 ENAC LAME

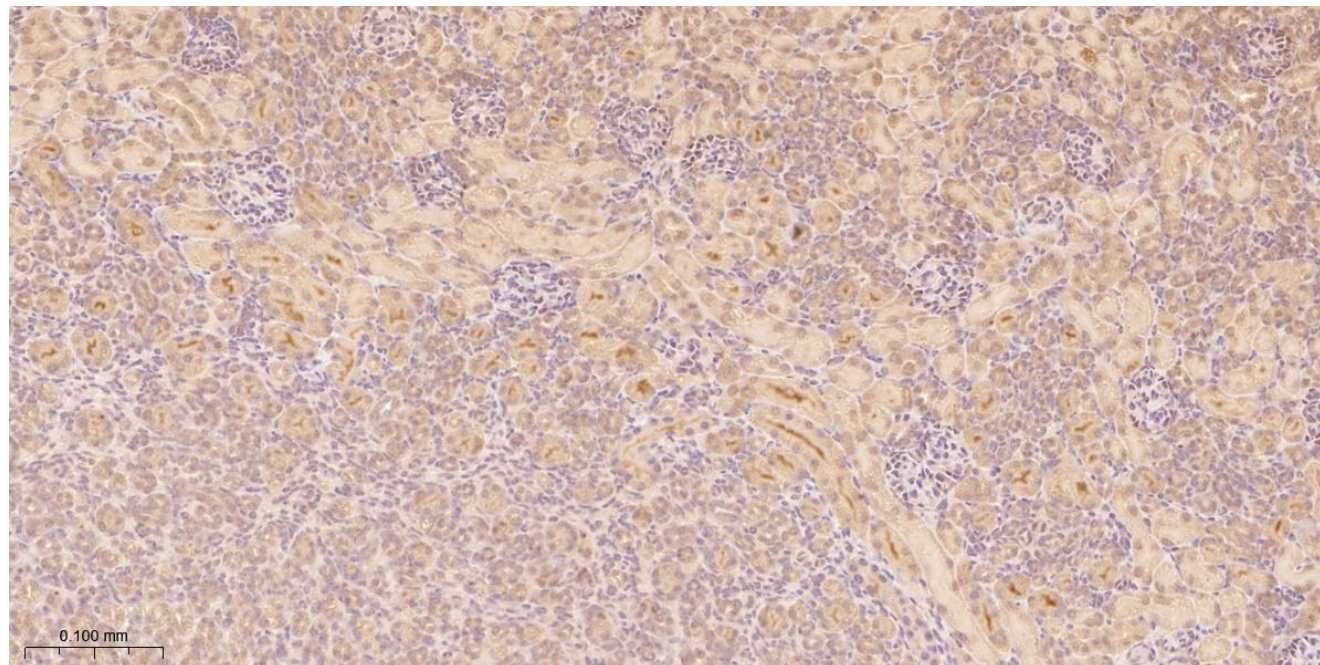


Fig 4 ENAC control female

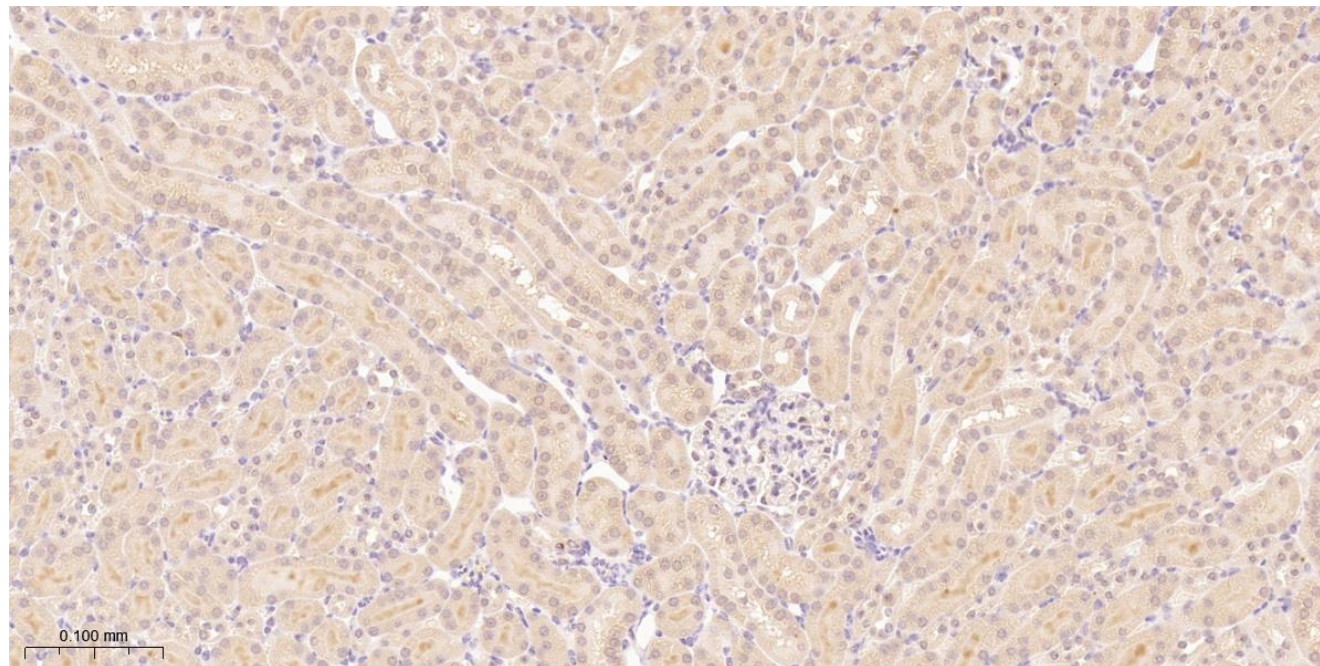


Fig 4 ENAC control male

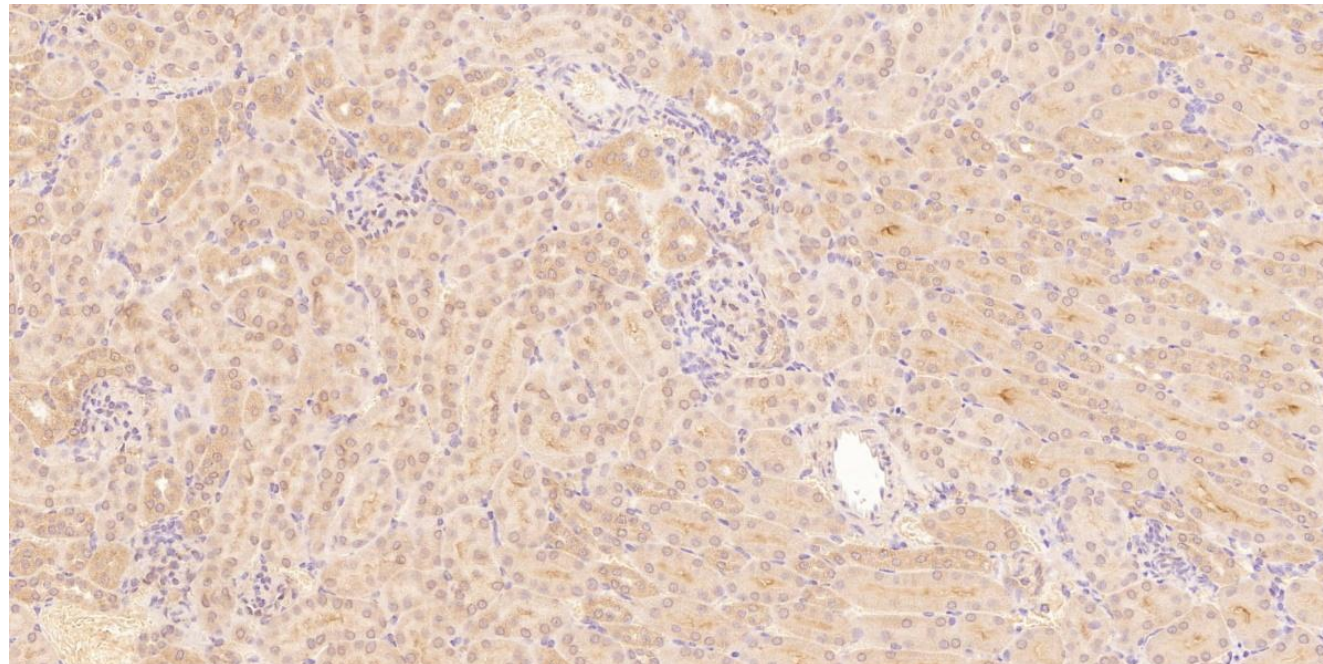


Fig 4 ENAC LAME female

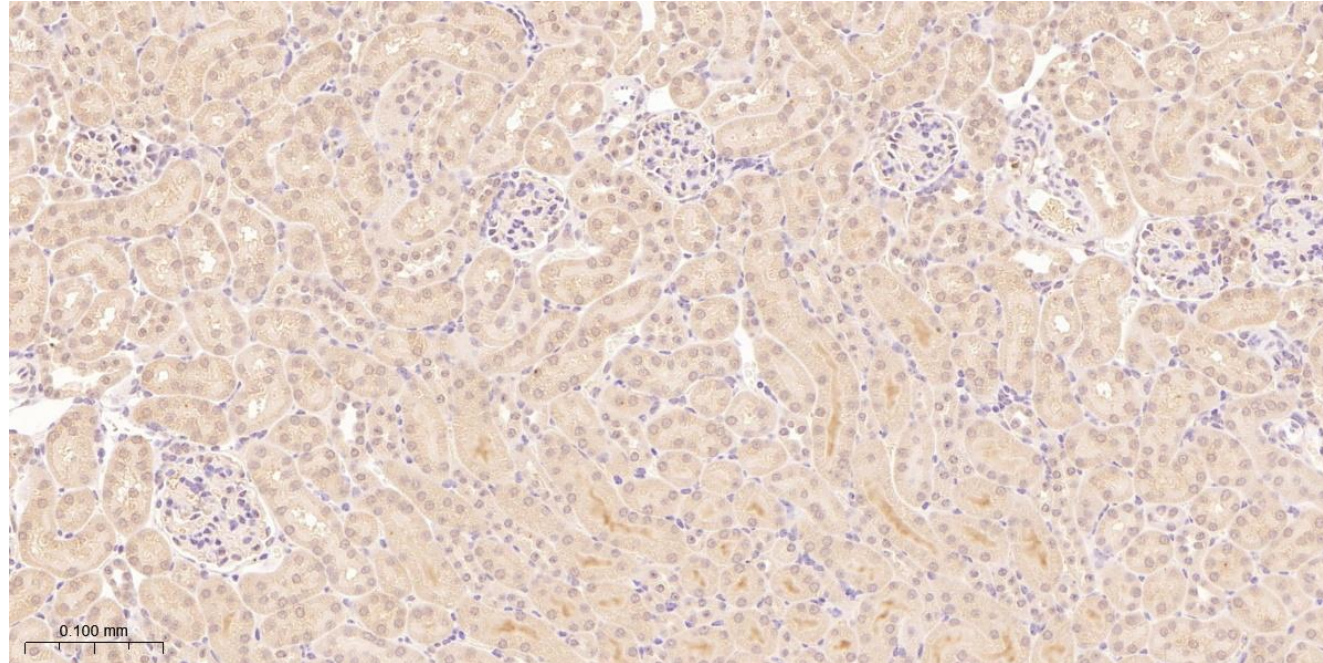


Fig 4 ENAC LAME male

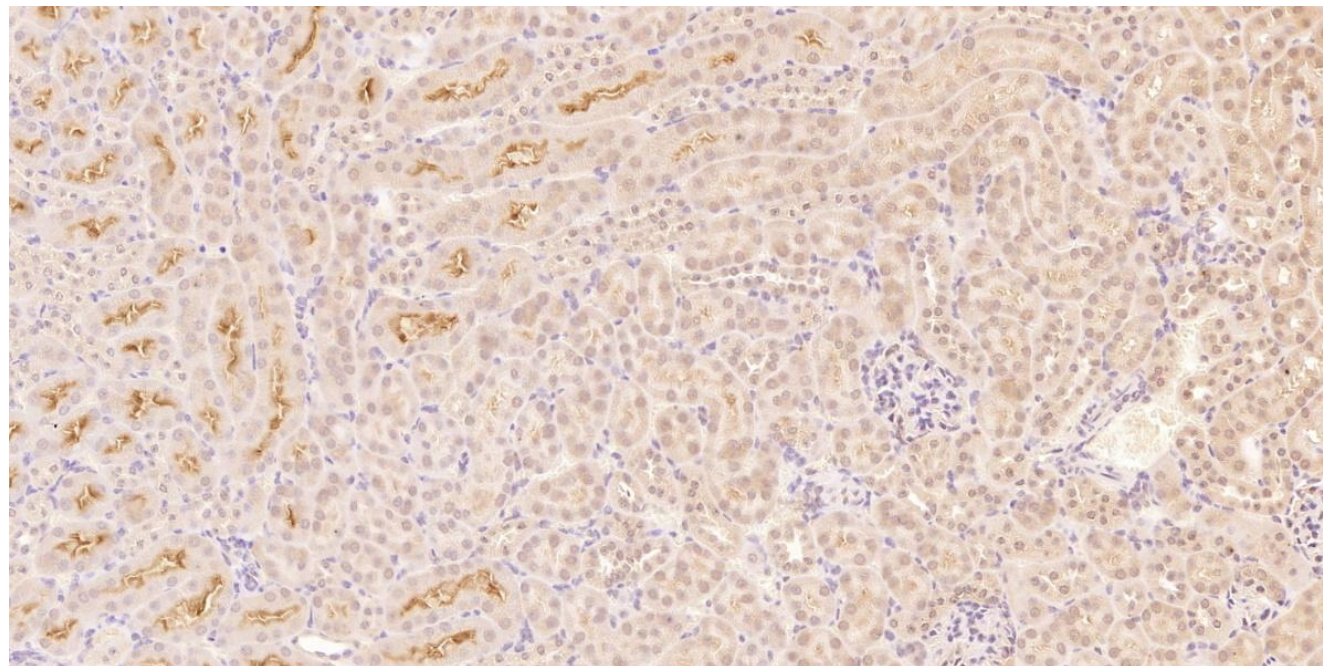


Fig 3 GRK LAME

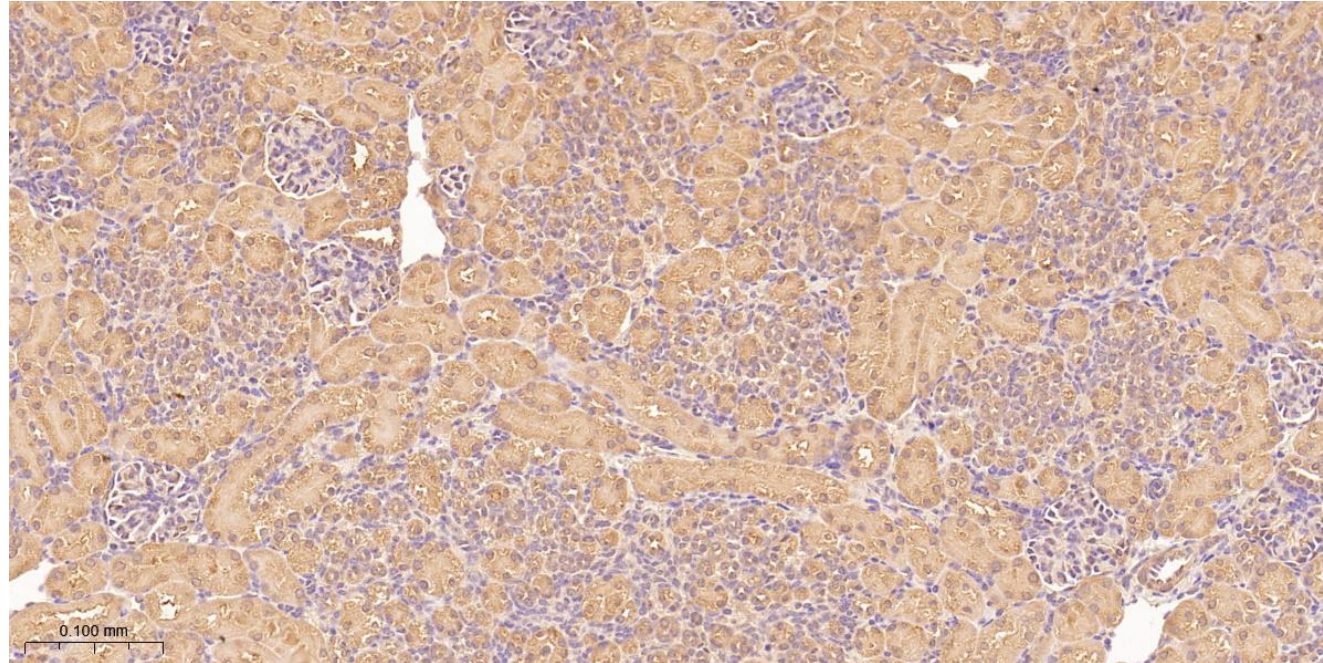


Fig 3 GRK control

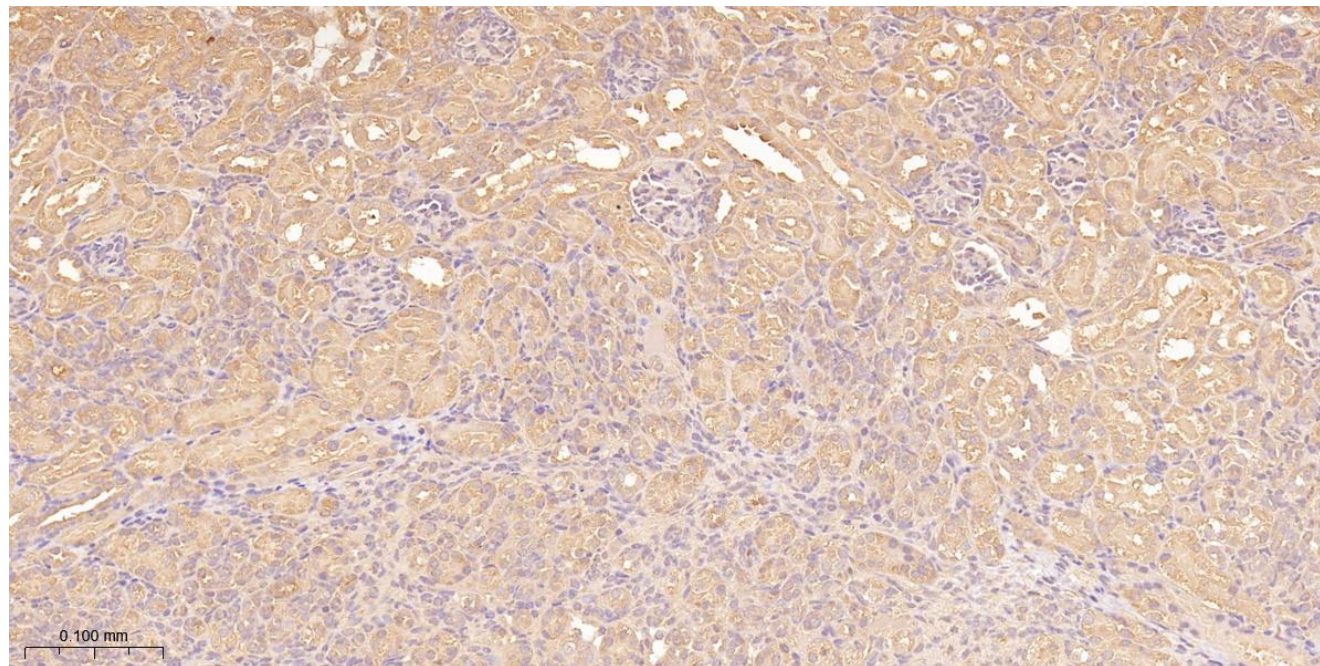


Fig 4 GRK control female

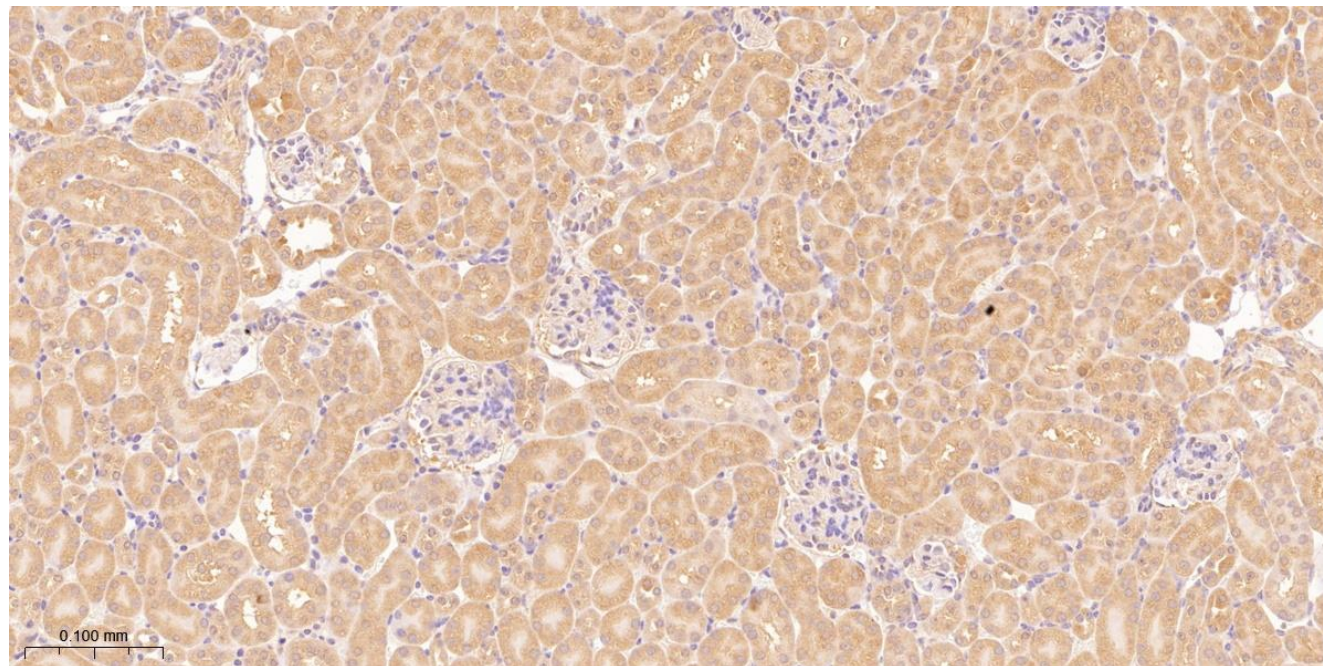


Fig 4 GRK control male

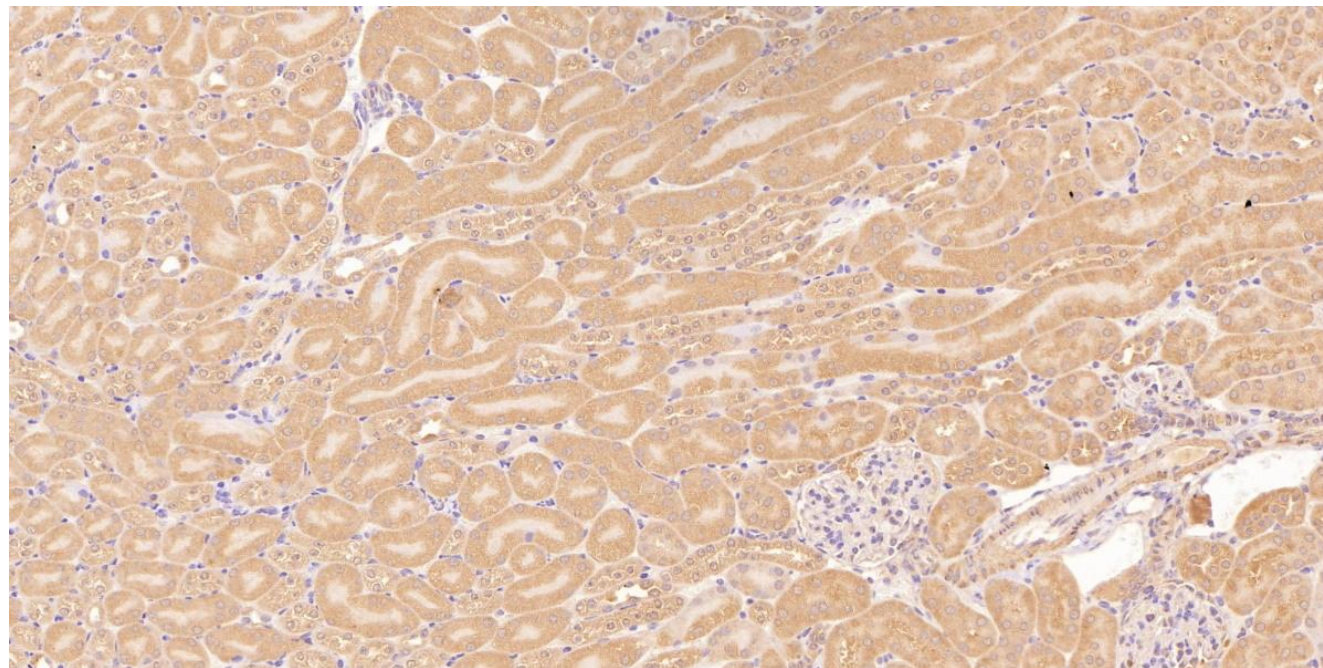
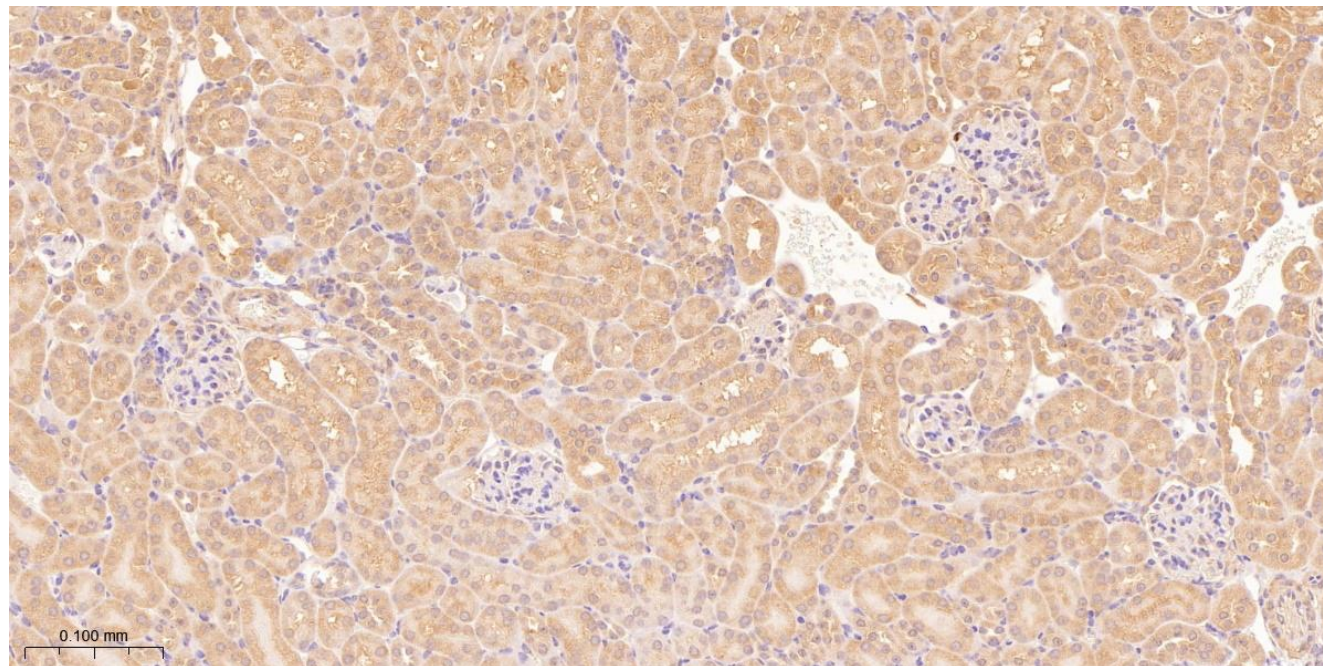


Fig 4 GRK LAME female



Fg 4 GRK LAME male

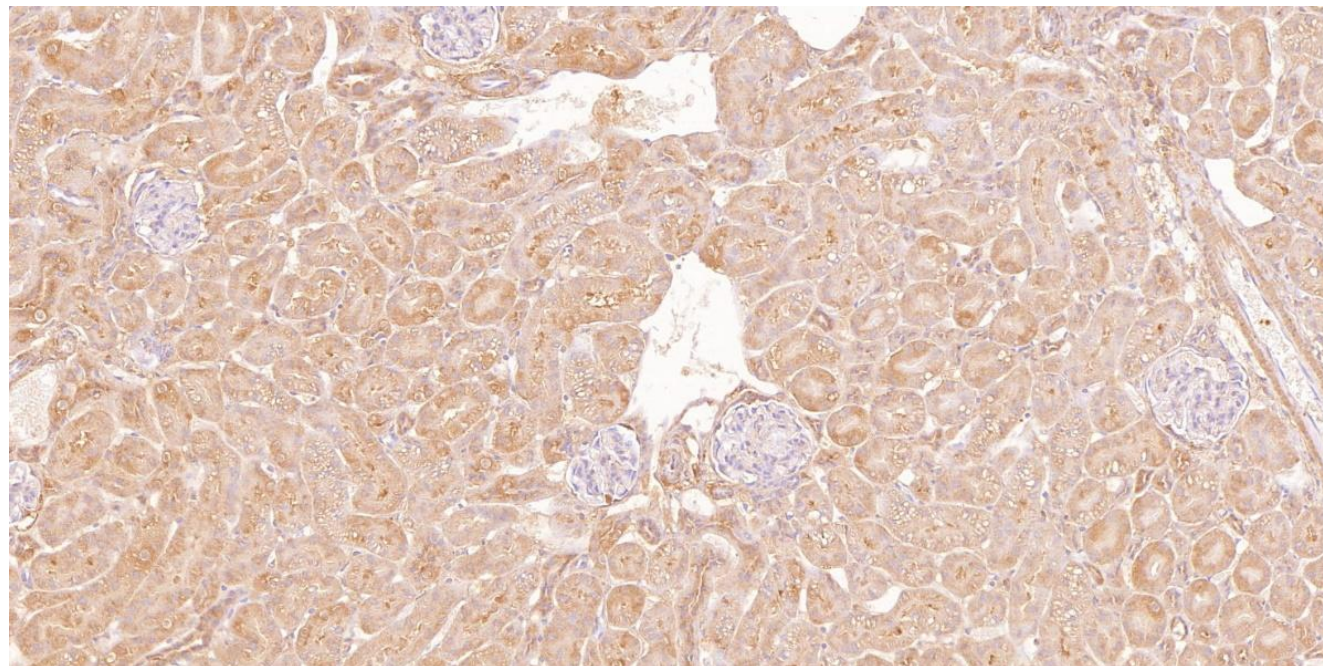


Fig 3 NCC control

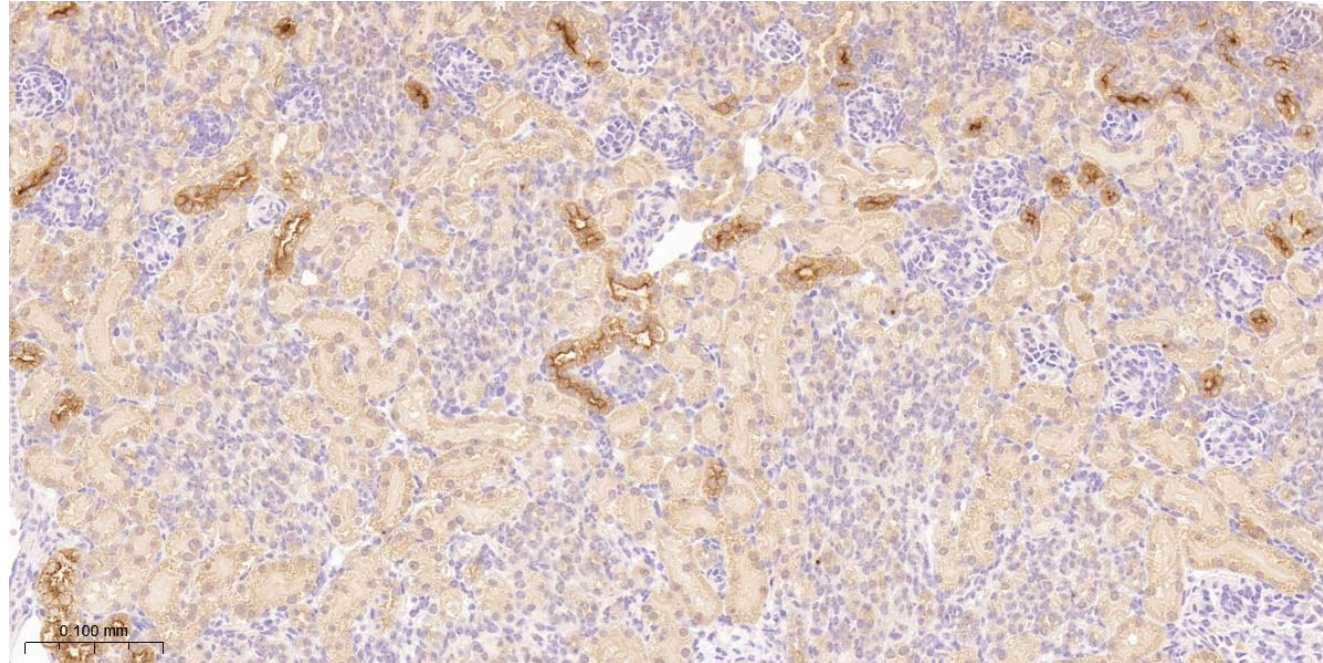


Fig 3 NCC LAME

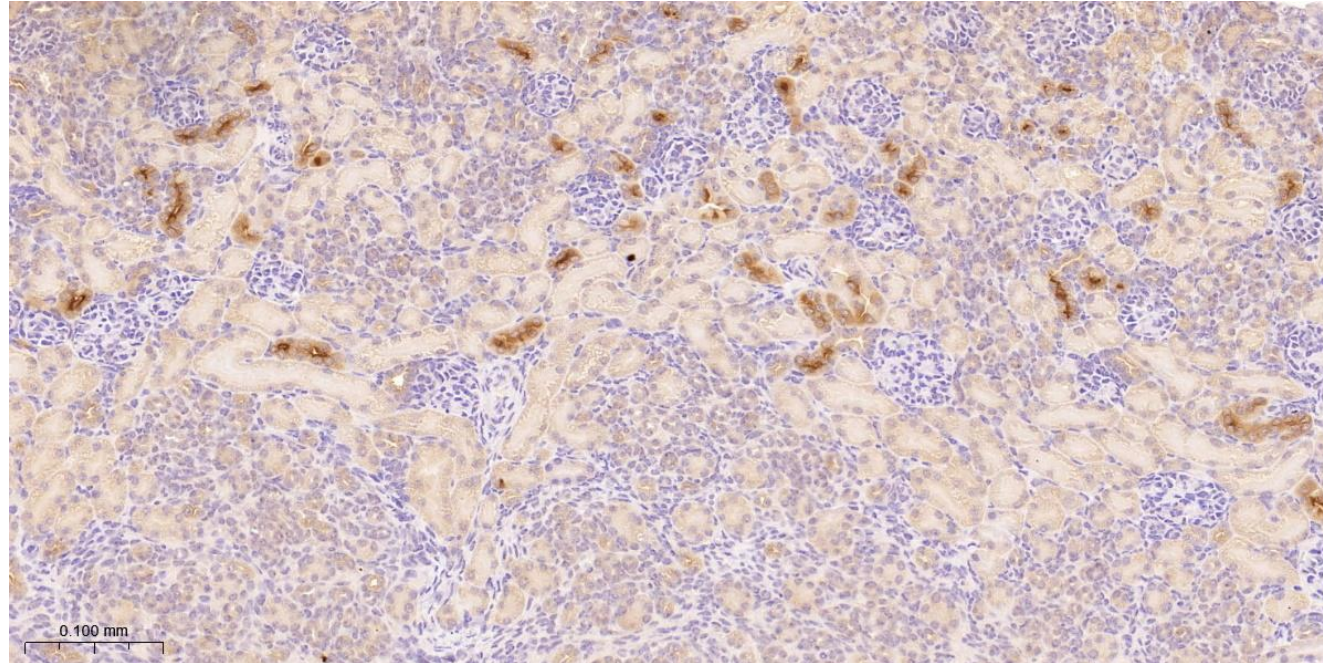


Fig 4 NCC control female

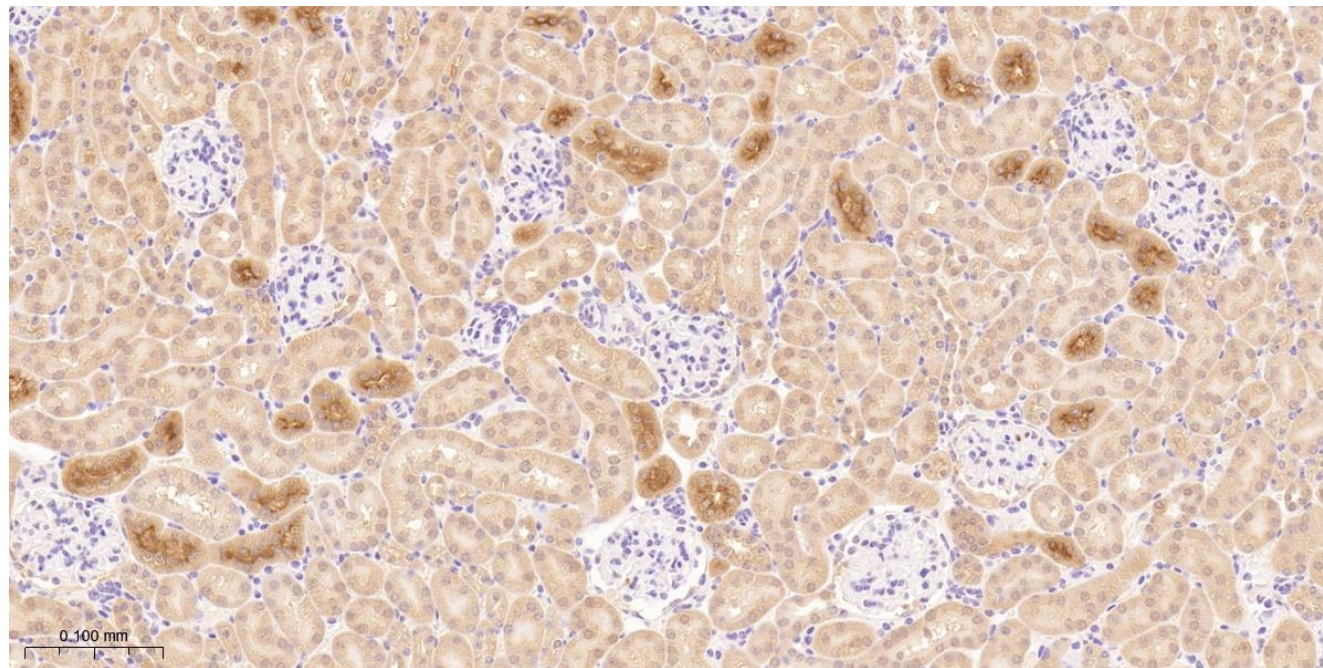


Fig 4 NCC control male

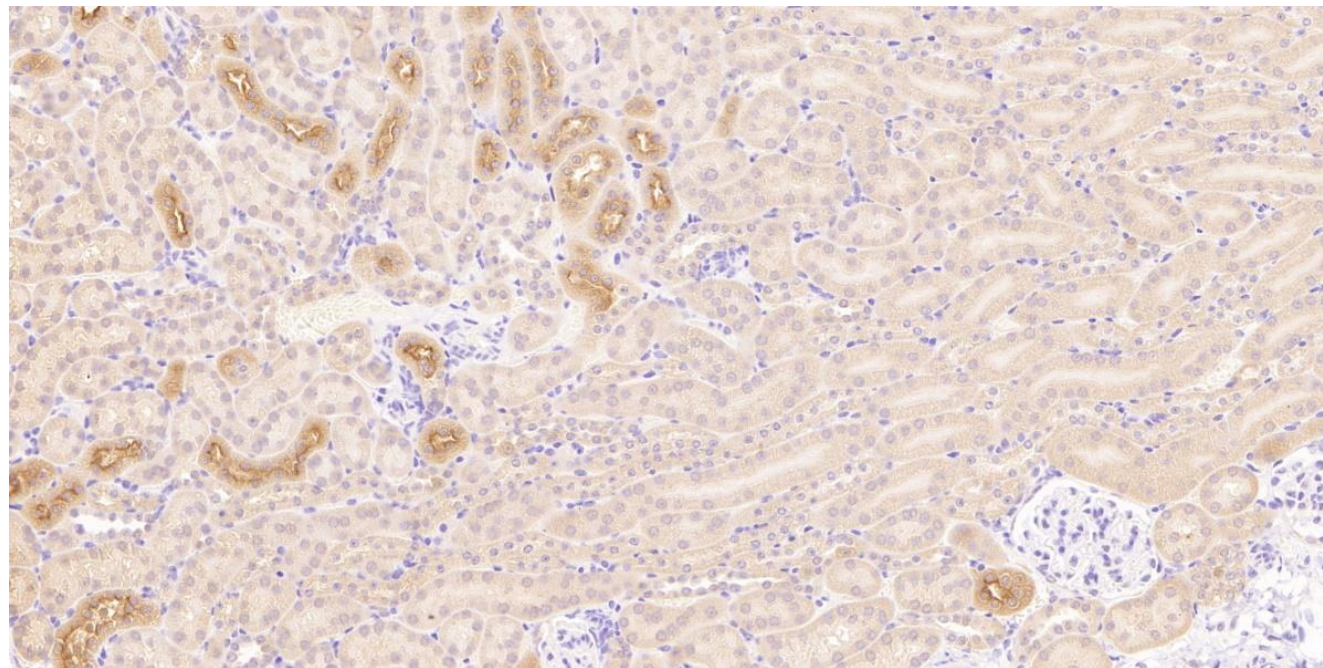


Fig 4 NCC LAME female

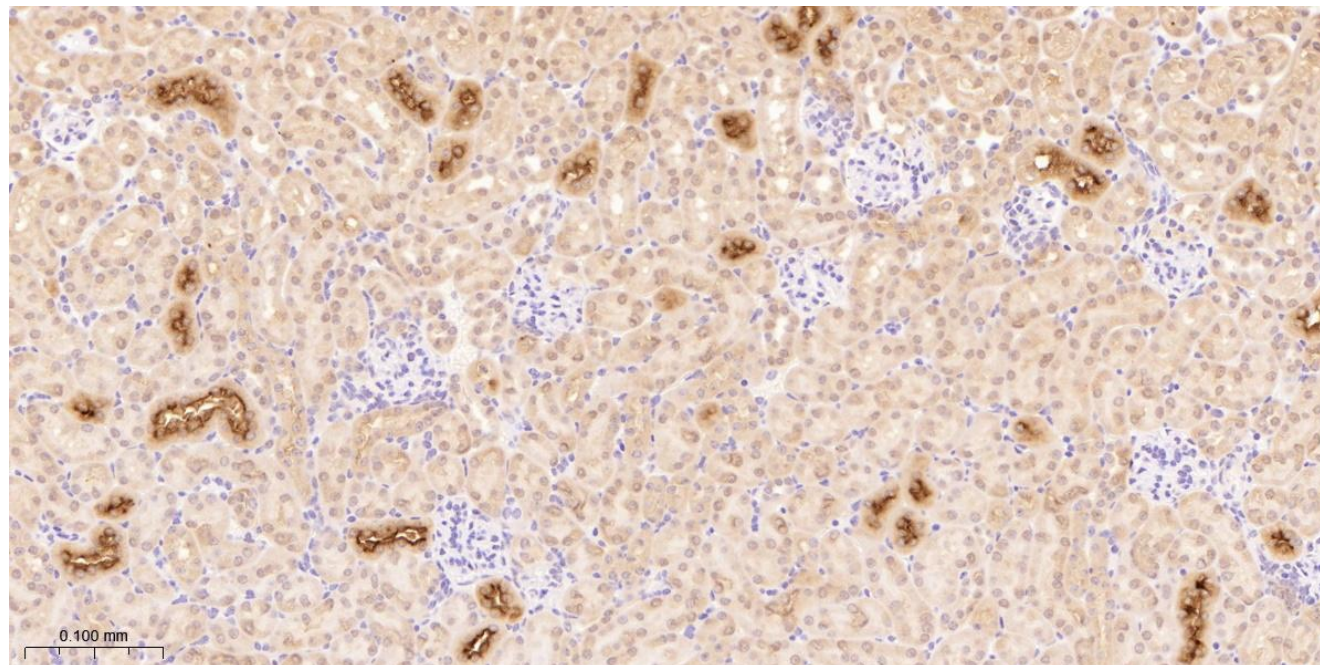


Fig 4 NCC LAME male

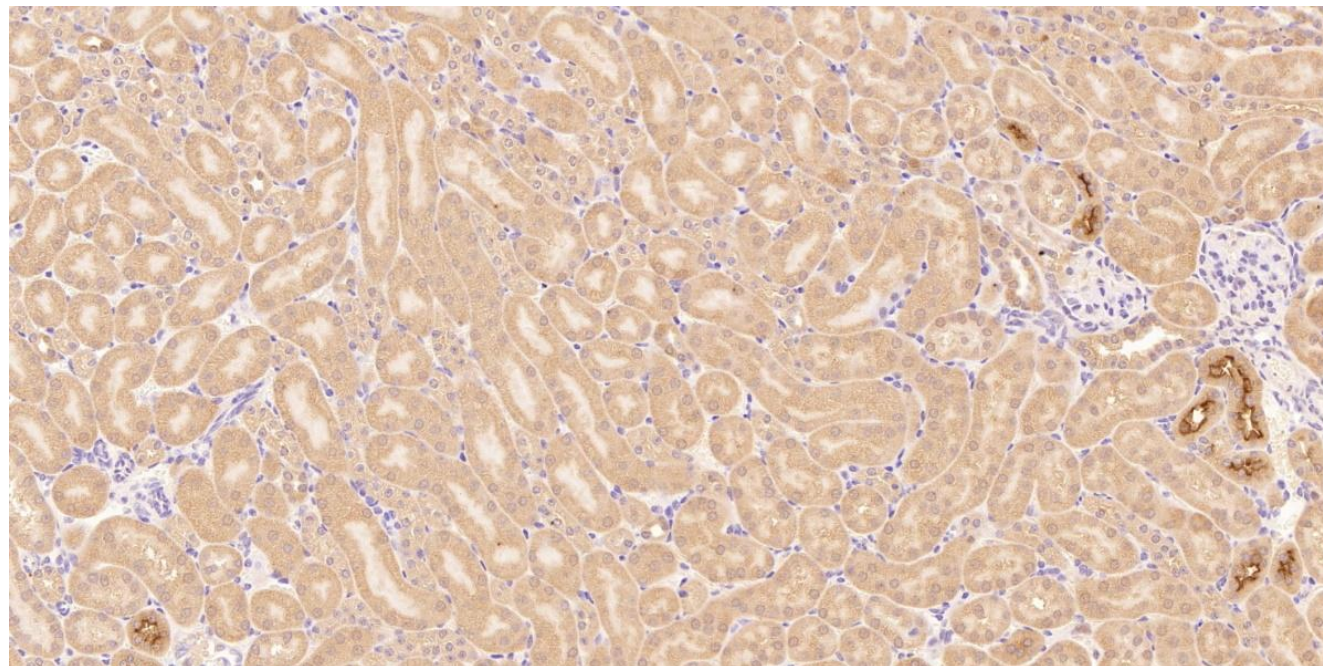
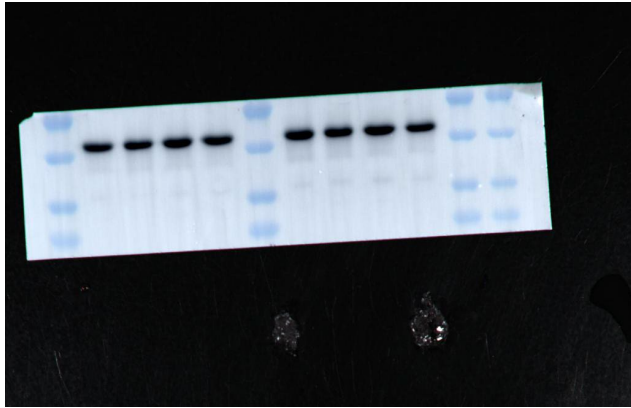


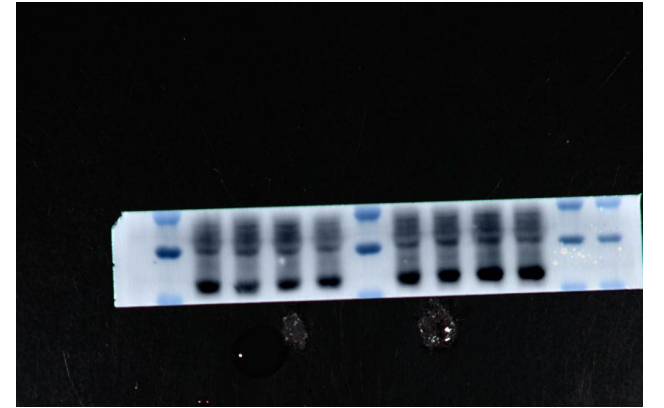
Fig 3B



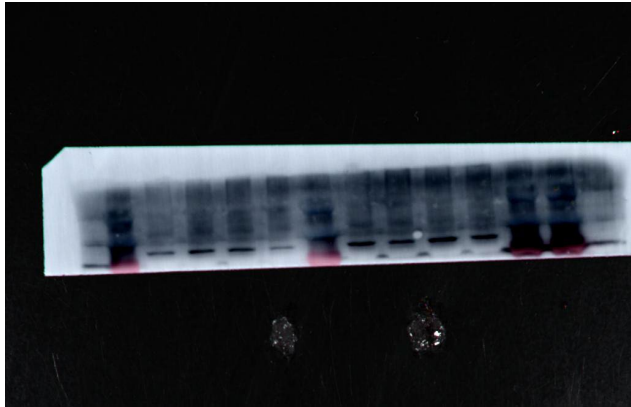
Actin



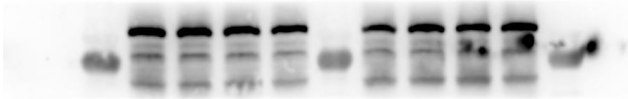
AQP2



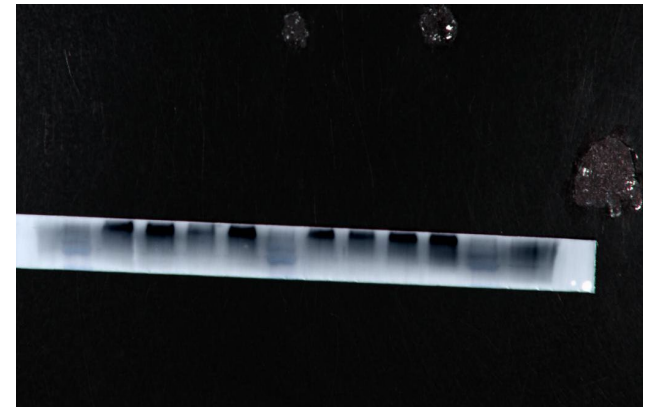
AT1R



GRK4

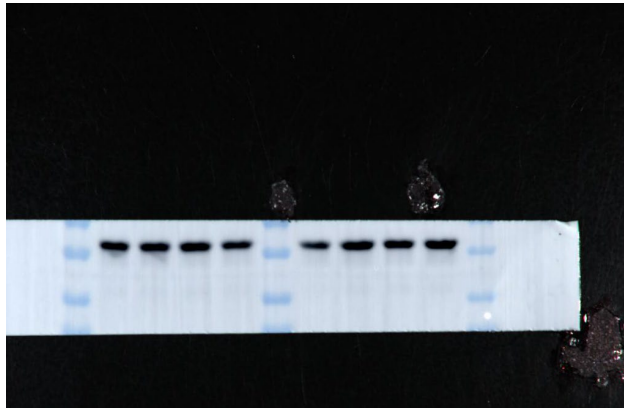


ENaC

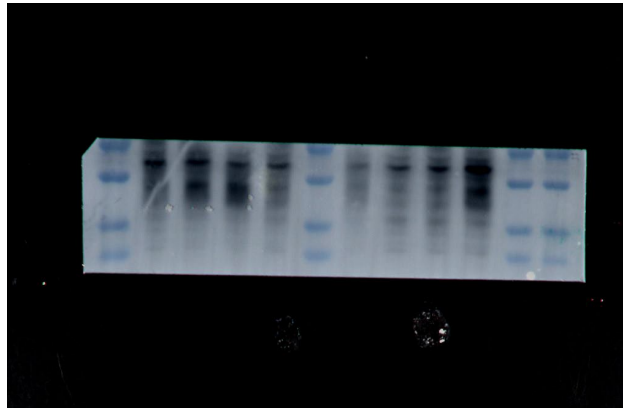


NCC

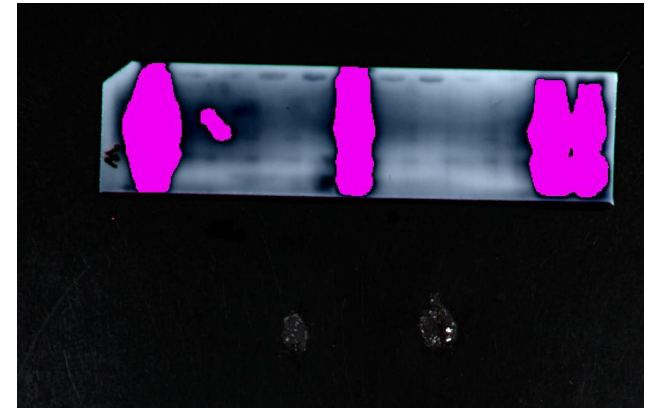
Figure 4B male



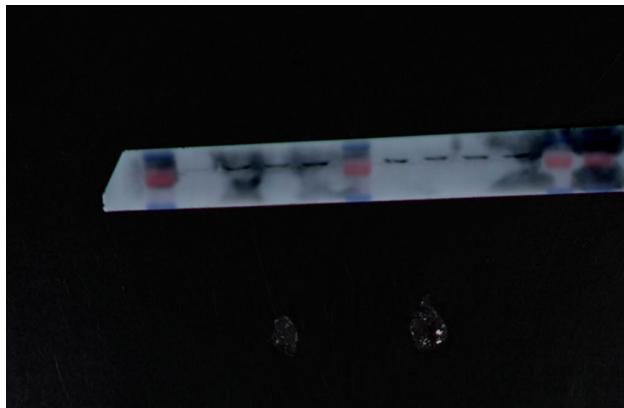
Actin



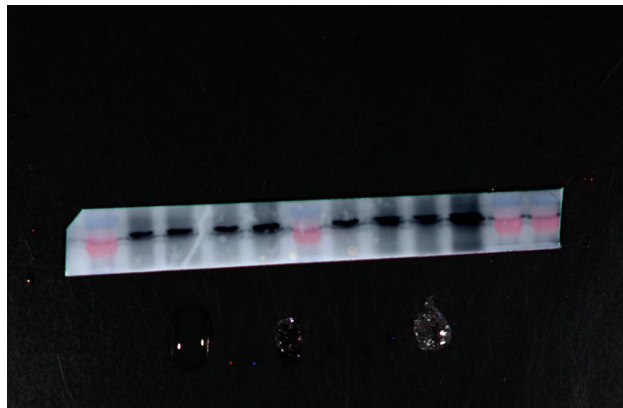
AQP2



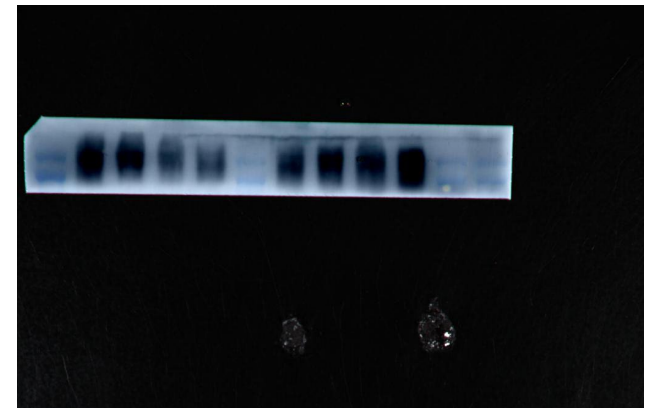
AT1R



GRK4

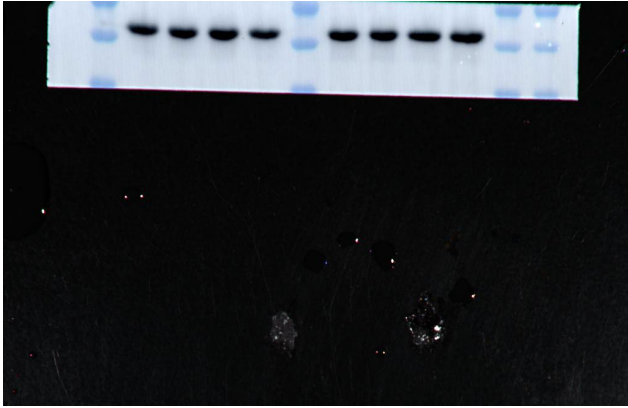


ENaC

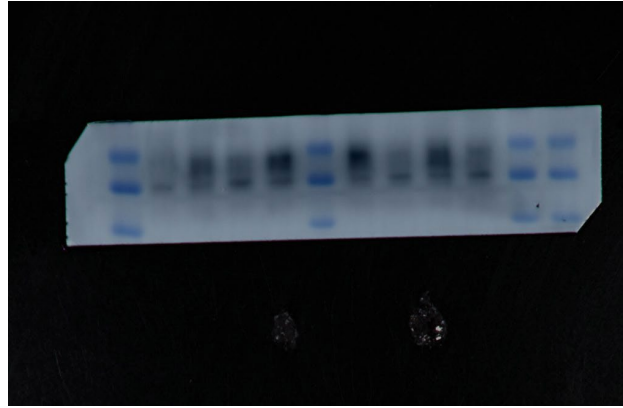


NCC

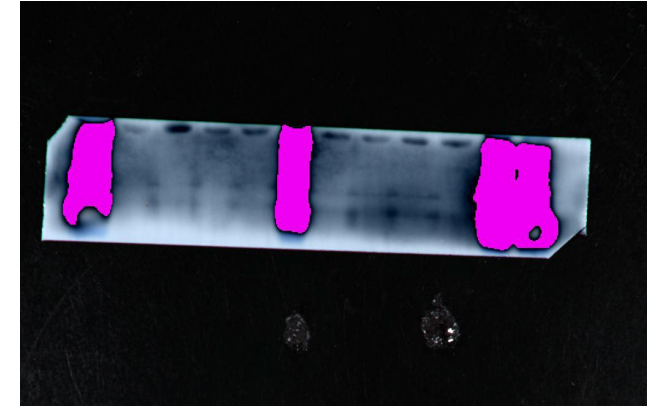
Figure 4B female



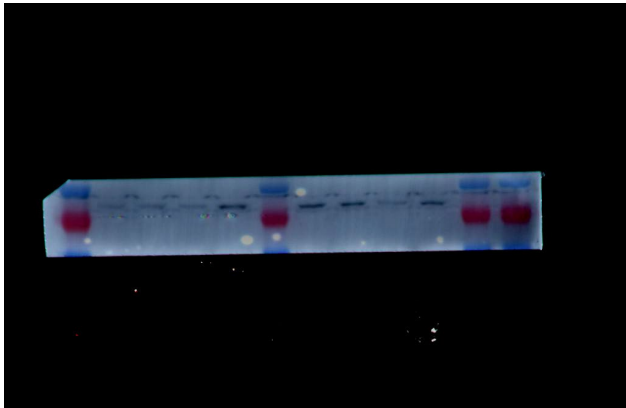
Actin



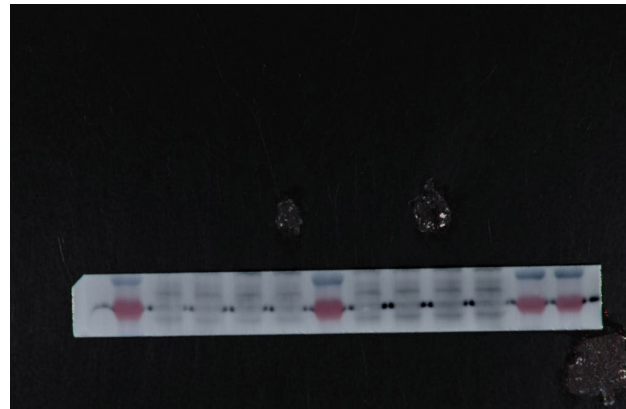
AQP2



AT1R



GRK4



ENaC



NCC