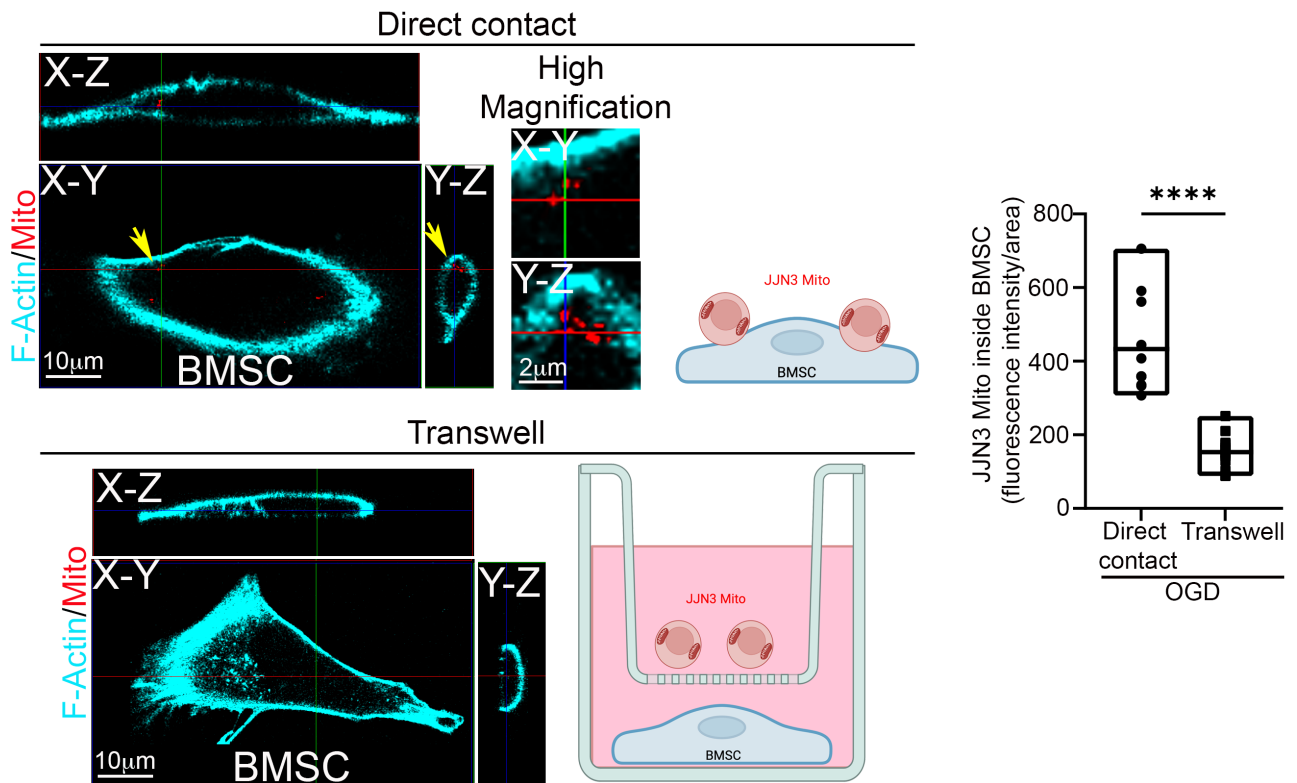


JJN3 Mito + BMSCs



Supplementary Fig. 1:

The Transfer of Mitochondria from JJN3 to BMSCs Occurs Through Direct Contact

Representative confocal images and quantification of Mitotracker Deep Red signal within BMSCs in direct-contact and non-contact co-culture (Transwell) with JJN3 cells stained with Mitotracker Deep Red (JJN3 Mito). The quantification demonstrates that mitochondrial transfer occurs exclusively through direct contact, with no evidence of passive dye diffusion.