

Role of Arg1⁺ ILC2s and ILCregs in Gestational Diabetes Progression

Zhangyun Gong^{1,2*}; Haixing Yi^{1,2*}; Jie Zhang^{1,2*}; Wan Li^{1,2}; Hao Wang^{1,2}; Peipei Guo^{1,2};
Caihua Li^{1,2}; Anan Pan^{1,2}; Yunxia Cao^{1,2}; Zhimin Lu^{1,2#}; Huanhuan Jiang^{1,2#}

¹Reproductive Medicine Center, Department of Obstetrics and Gynecology, the First Affiliated Hospital of Anhui Medical University, Wanshui Road No.120, Hefei, 230000, Anhui, China

²NHC Key Laboratory of study on abnormal gametes and reproductive tract (Anhui Medical University), No 81 Meishan Road, Hefei, 230032, Anhui, China

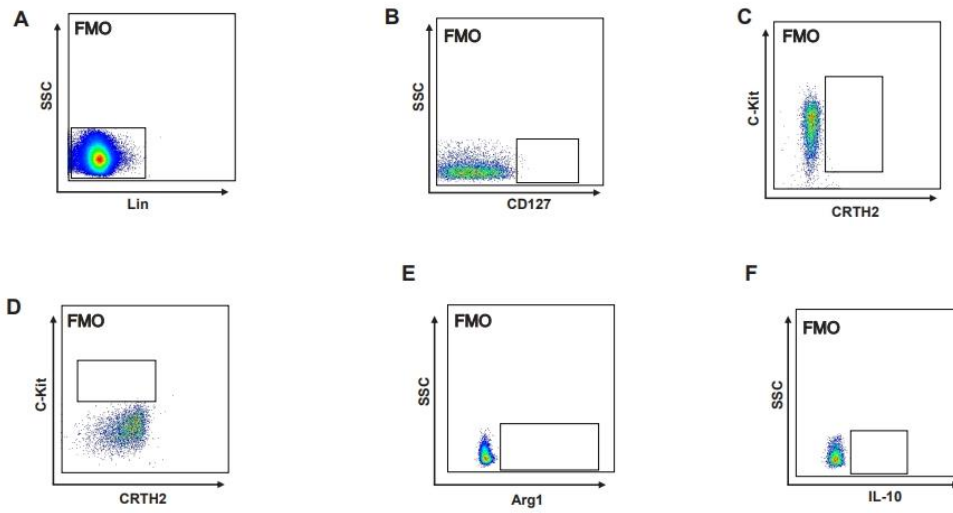
*These authors contribute equally to this work.

#Corresponding author: Zhimin Lu, PhD, E-mail: luzhimin412@163.com

Huanhuan Jiang, PhD, E-mail: jhh198673@163.com

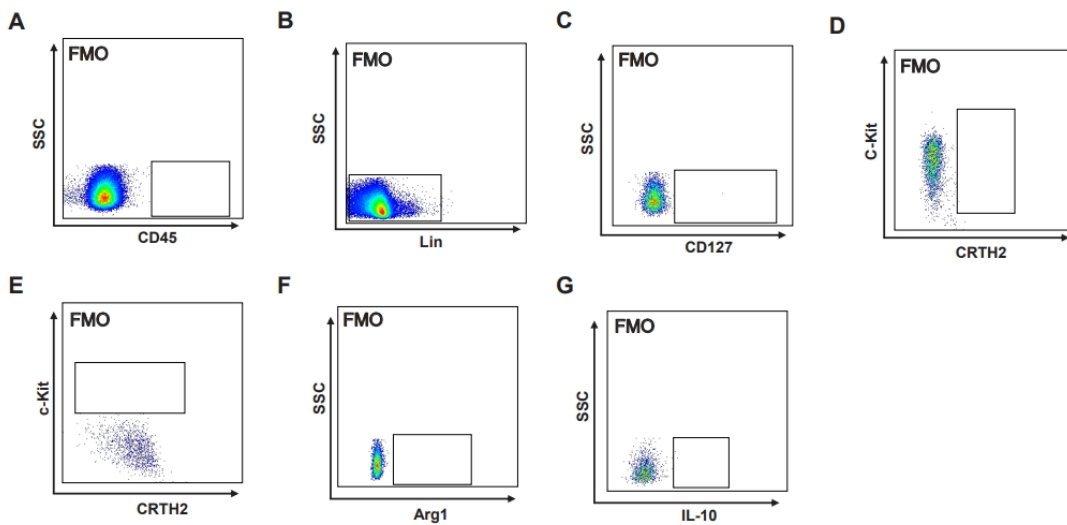
None of the authors have a conflict of interest.

Supplementary Figure 1



Supplemental figure 1. FMO Controls for the Identification of ILCs and ILCregs subsets in PBMCs. (A-F) Representative flow cytometry plots showing FMO controls for each fluorophore in the panel.

Supplementary Figure 2



Supplemental figure 2. FMO Controls for the Identification of ILCs and ILCregs subsets in tissue. (A-G) Representative flow cytometry plots showing FMO controls for each fluorophore in the panel.