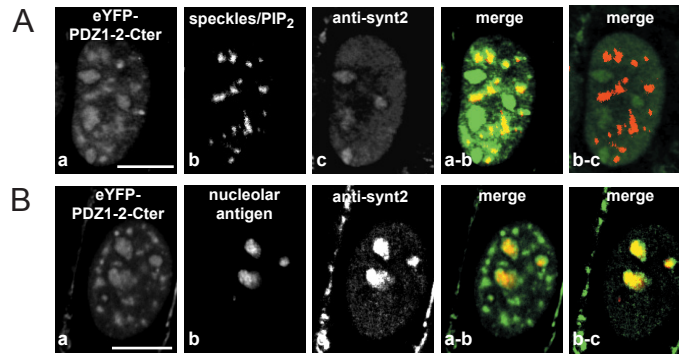


Supplementary Information 3



The anti-syntenin-2 antibody detects syntenin-2 in nucleoli but not in nuclear speckles.

(A) Confocal micrograph of the nucleus of a MCF-7 cell expressing eYFP fused to a segment of syntenin-2 containing both PDZ domains plus the C-terminal domain “eYFP-PDZ1-2-Cter” (a and green in a-b). Although the eYFP-PDZ1-2-Cter co-localizes with nuclear speckles/PIP₂ (b and red in a-b and b-c) as shown by the yellow signal in a-b, our anti-syntenin-2 antibody (c and green in b-c) failed to react with eYFP-PDZ1-2-Cter in the nuclear speckles/PIP₂ structures as shown by the lack of overlap between green and red signals in b-c.

(B) Confocal micrograph of the nucleus of a MCF-7 cell expressing eYFP-PDZ1-2-Cter (a and green in a-b). The eYFP-PDZ1-2-Cter co-localizes with nucleolar antigen (b and red in a-b and b-c) as shown by the yellow signal in a-b. Our anti-syntenin-2 antibody (c and green in b-c) also detects the eYFP-PDZ1-2-Cter in nucleoli as shown by the yellow signal in b-c.