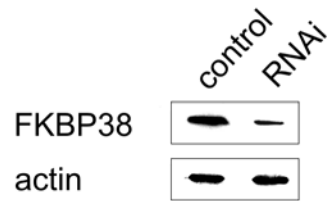
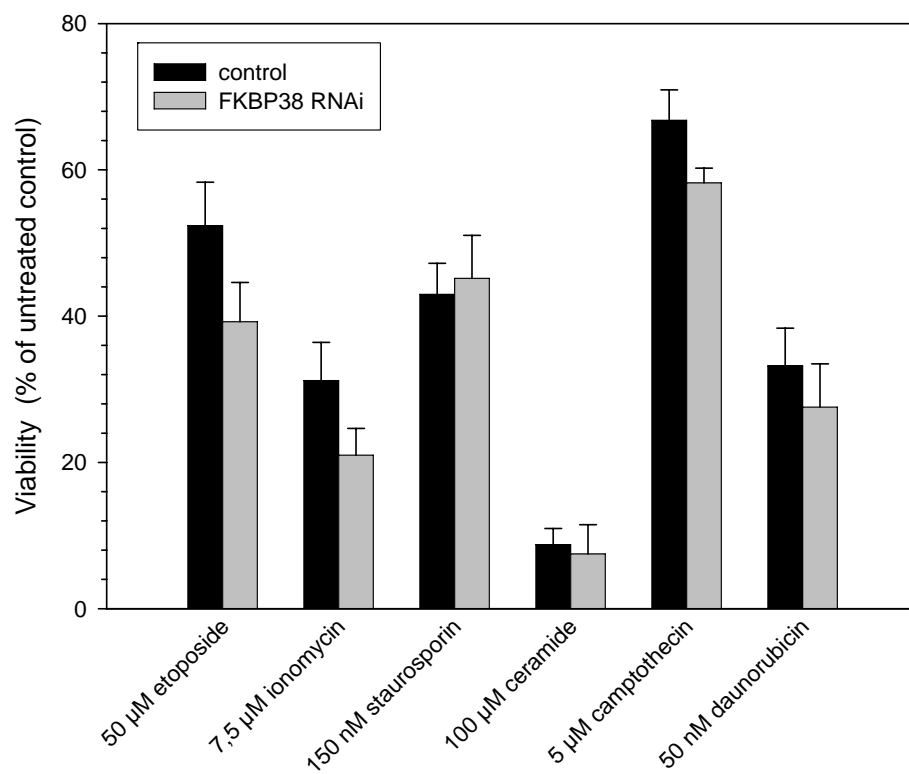


## Supplementary Figure 1

(A)



(B)



**Supplementary Figure 1.** Effects of FKBP38 depletion on apoptosis in HeLa cells. Cells were transfected with a vector producing specific FKBP38 RNAi or the empty vector (control). (A) Expression of endogenous FKBP38 was analysed by Western blot using polyclonal anti-FKBP38 antibody.  $\beta$ -actin was used as loading control. (B) Cells transfected with FKBP38 RNAi vector or empty vector were stimulated to apoptosis with various stimuli. Survival rates of SH-SY5Y cells were determined by Guava Viability Assay with a Guava personal analyser.