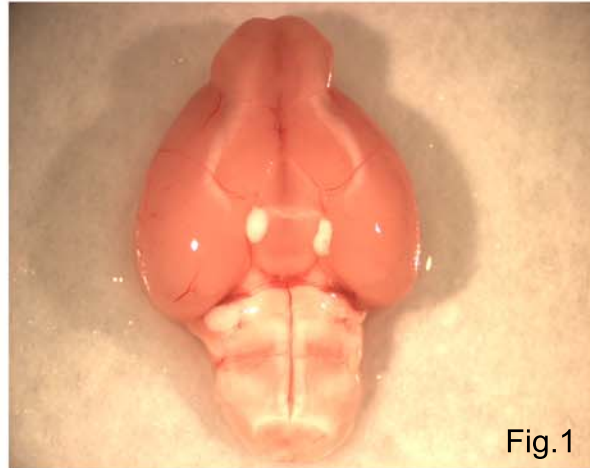


Hypothalamus Dissection

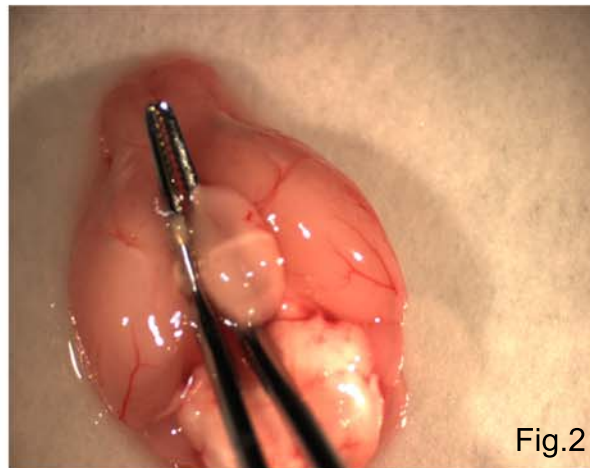
Important Note: The following dissections are performed using a dissecting microscope, with brain on filter paper moistened with cold RNase-free 1X PBS on top of a Petri dish filled with ice. All surgical instruments are cleaned with RNaseZap in between each animal and brain region.

Method: Remove brain from skull and place ventral side up (Fig.1).



Using curved forceps, push the curved part of the forceps down around the hypothalamus, and gently “spoon” out the hypothalamus by pinching it out while pushing down with the forceps (Fig.2).

Immediately place tissue into the bottom of a 15-ml Falcon tube and immediately snap freeze on dry ice.



View of excised hypothalamus (Fig.3). There should be a depression where the hypothalamus was excised.

