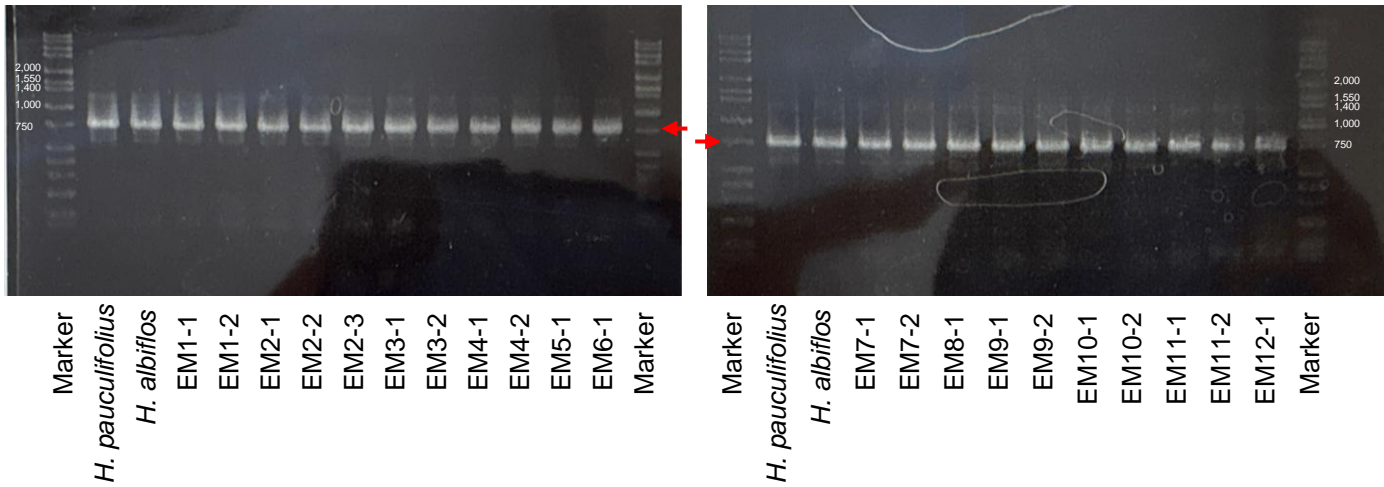


ITS (Embryo-derived plantlets)



ITS (Endosperm-derived plantlets)

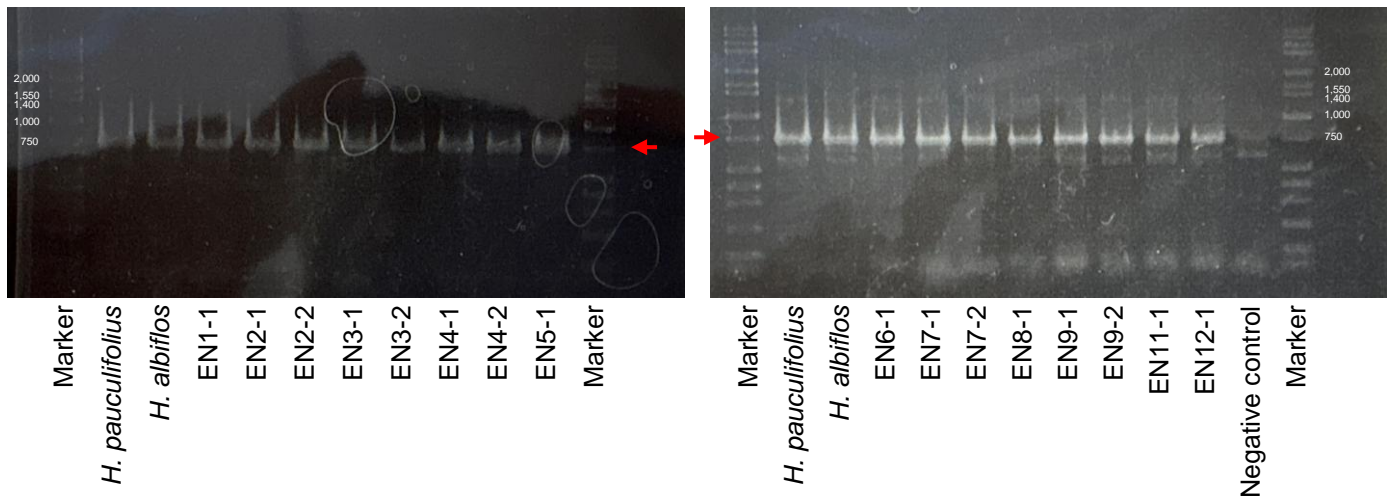


Fig. S1

Electrophoresis images showing the amplification of the ITS region in *Haemanthus paucifolius*, *H. albiflos*, and embryo- and endosperm-derived plantlets.

The ITS regions were amplified using the forward primer ITS5 and the reverse primer ITS4. The marker used was the Wide-Range DNA Ladder (50–10,000 bp; Takara Bio, Shiga, Japan). Arrows indicate the target DNA bands.