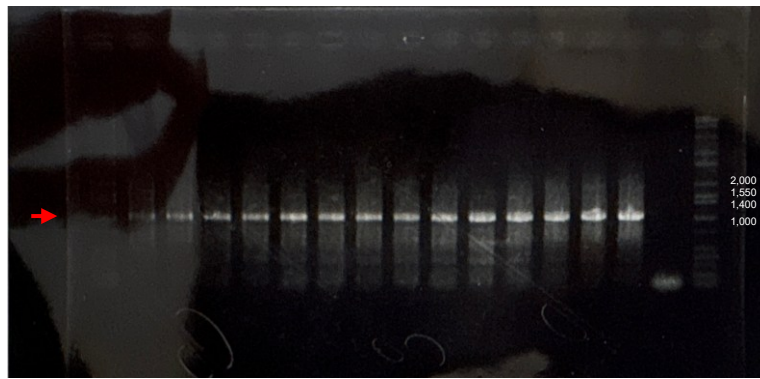


trnL-trnF

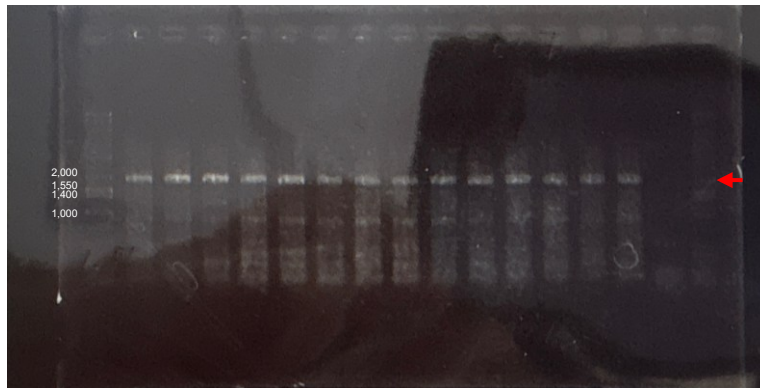
Primer
Forward: trnC
Reverse: trnF



Marker
H. pauculifolius
H. albiflos
EM6-1
EM8-1
EM1-1
EM4-1
EM7-2
EM11-1
EN6-1
EN8-1
EN1-1
EN4-1
EN7-2
EN11-1
Negative control
Marker

matK

Primer
Forward: 19F
Reverse: 2R



Marker
H. pauculifolius
H. albiflos
EM6-1
EM8-1
EM1-1
EM4-1
EM7-2
EM11-1
EN6-1
EN8-1
EN1-1
EN4-1
EN7-2
EN11-1
Negative control
Marker

nad1

Primer
Forward: nad1eB
Reverse: nad1eCR



Marker
H. pauculifolius
H. albiflos
EM6-1
EM8-1
EM1-1
EM4-1
EM7-2
EM11-1
EN6-1
EN8-1
EN1-1
EN4-1
EN7-2
EN11-1
Negative control
Marker

Fig. S4

Electrophoresis images showing the amplification of the *trnL-trnF* region, *matK* gene, and *nad1* gene in *Haemanthus pauculifolius*, *H. albiflos*, and embryo- and endosperm-derived plantlets.

The marker used was the Wide-Range DNA Ladder (50–10,000 bp). Arrows indicate the target DNA bands.