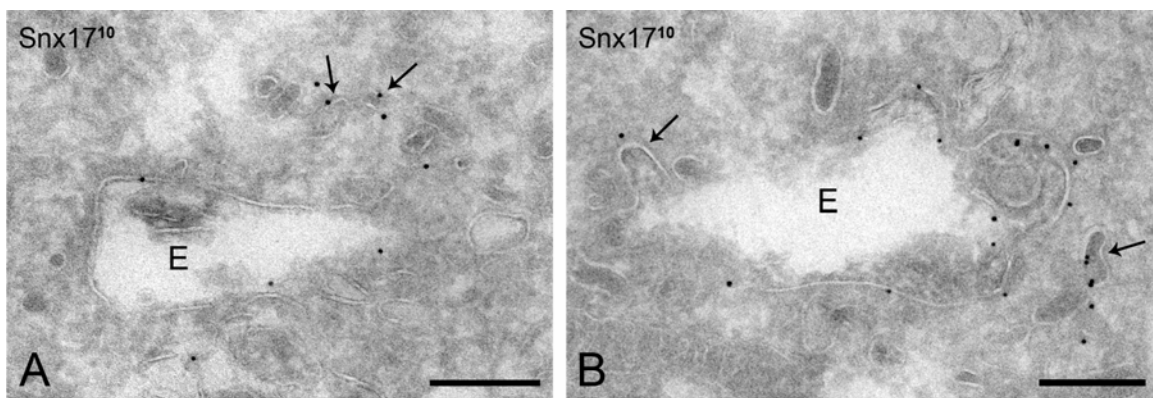


## Supplementary Figure 1; van Kerkhof et al



**Supplementary Figure 1: SNX17 localizes to early endosomal vacuoles and recycling tubules.** Non-transfected U87 cells were labeled with anti-Snx17 antibody for ultrastructural immuno EM analysis. The endosomal morphology and Snx17 distribution pattern is identical to myc-Snx17 expressing cells (Figure 5). The arrows point to endosome-associated and tubulo-vesicular recycling profiles. E = endosome. Bars, 200 nm.