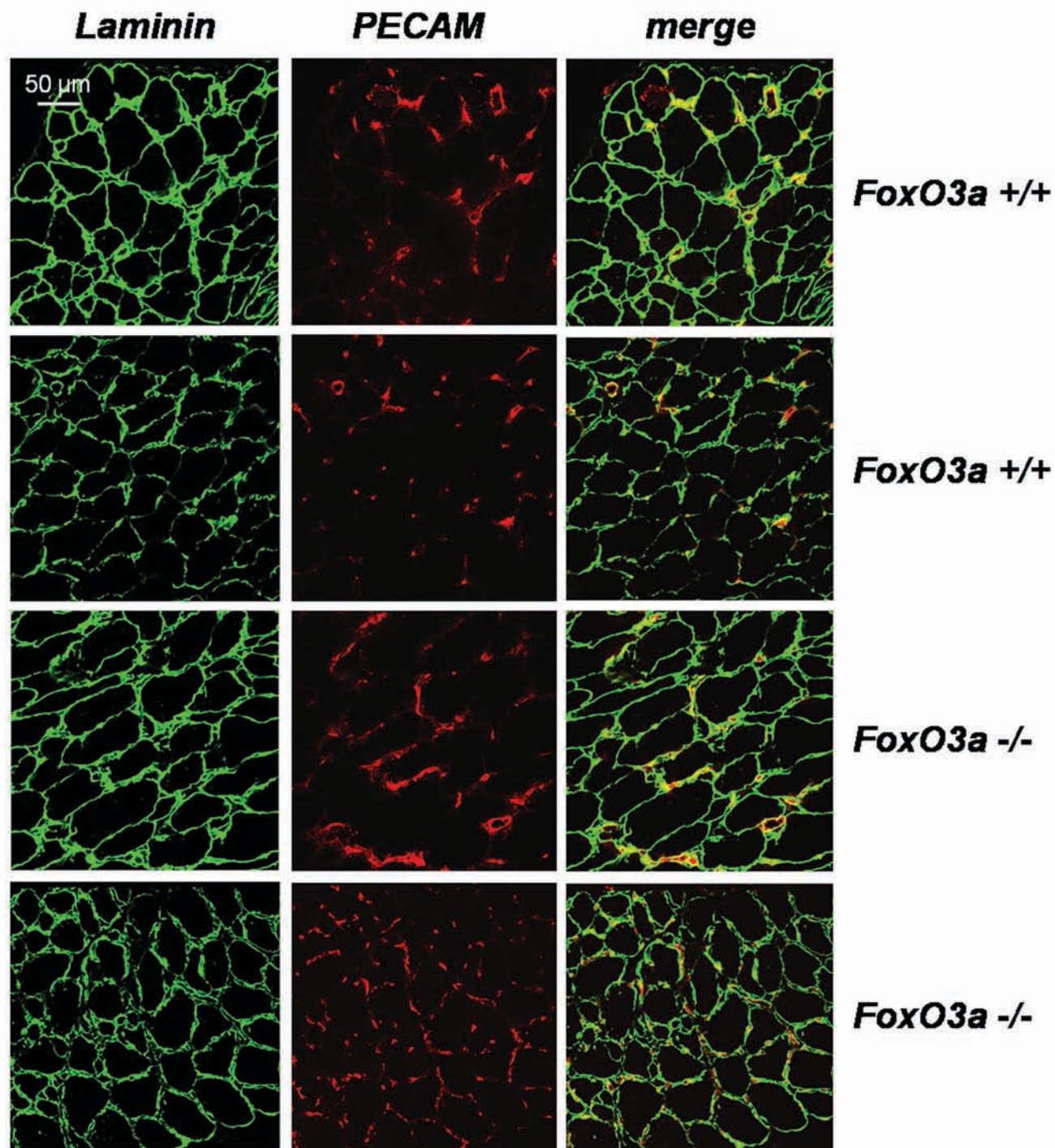


# Supplementary Table 1: Potente et al.

Genbank	Common	FoxO1: siRNA/scrambled	Daly et al. FoxO1 A3 / GFP
D13891	ID2	0.35	13.48
AF187858	Angiopoietin 2	0.37	14.33
AF132818	Kruppel-like factor 5 (KLF5)	0.49	14.2
NM_001168	Survivin	1.8	0.19
NM_002345	Lumican	0.36	26.83
NM_002019	Fms-related tyrosine kinase 1	0.59	11.3
NM_004428	Ephrin-A1	1.35	0.19
AF138303	Decorin	0.64	100
AI813758	Pro-alpha-1 type 3 collagen	0.75	12.79
AF020761	Ubiquitin-conjugating enzyme E2D 1	0.53	9.28
NM_004447	EPS8	0.78	4.76
AB011446	Serine/threonine kinase 12	1.47	0.18
NM_000362	TIMP 3	0.83	6.35
NM_006329	Fibulin 5	1.37	11.15
NM_007317	Kinesin-like 4	1.35	0.19
AL096710	Bullous pemphigoid antigen 1	0.65	11.97
NM_001706	BCL-6	0.92	6.41
NM_005045	Reelin	0.83	15.07
NM_000216	Kallmann syndrome 1	0.75	54.27
NM_001809	Centromere protein A	1.64	0.17
AF055585	SLIT-2	0.79	5.77
NM_005733	RAB6KIFL	1.35	0.15
NM_001255	CDC20	1.26	0.14
NM_024501	HOXD1	0.80	4.92
D55716	MCM2	1.20	0.17
U40372	Phosphodiesterase 1C	0.89	16.11
NM_002423	MMP-7	0.87	100
NM_003810	Trail	1.02	2.76
AI962897	SEMA3C	0.96	86.63
NM_006080	SEMA3A	0.74	10.52
M73554	Cyclin D1	0.73	0.31
M96789	Connexin 37	0.89	0.09
NM_005266	Connexin 40	0.87	0.1
NM_003914	Cyclin A1	1.01	0.2
NM_005524	Hairy (Drosophila)-homolog (HES-1)	0.94	0.09

**Supplementary Table 1:** Comparison of gene expression changes in FoxO1 A3-transduced endothelial cells described by Daly et al. (Genes Dev. 2004 May 1;18(9):1060-71) with the respective genes in FoxO1 siRNA-transfected endothelial cells.

# Supplementary Fig.1 : Potente et al.



**Supplementary Fig.1** : Capillary density was determined in 8- $\mu$ m frozen sections of the adductor and semimembraneous muscles. Endothelial cells were stained for CD31 (PE-labeled; BD Biosciences). Myocyte Membranes were stained using an antibody to laminin (rabbit) followed by anti-rabbit-Alexa 488.