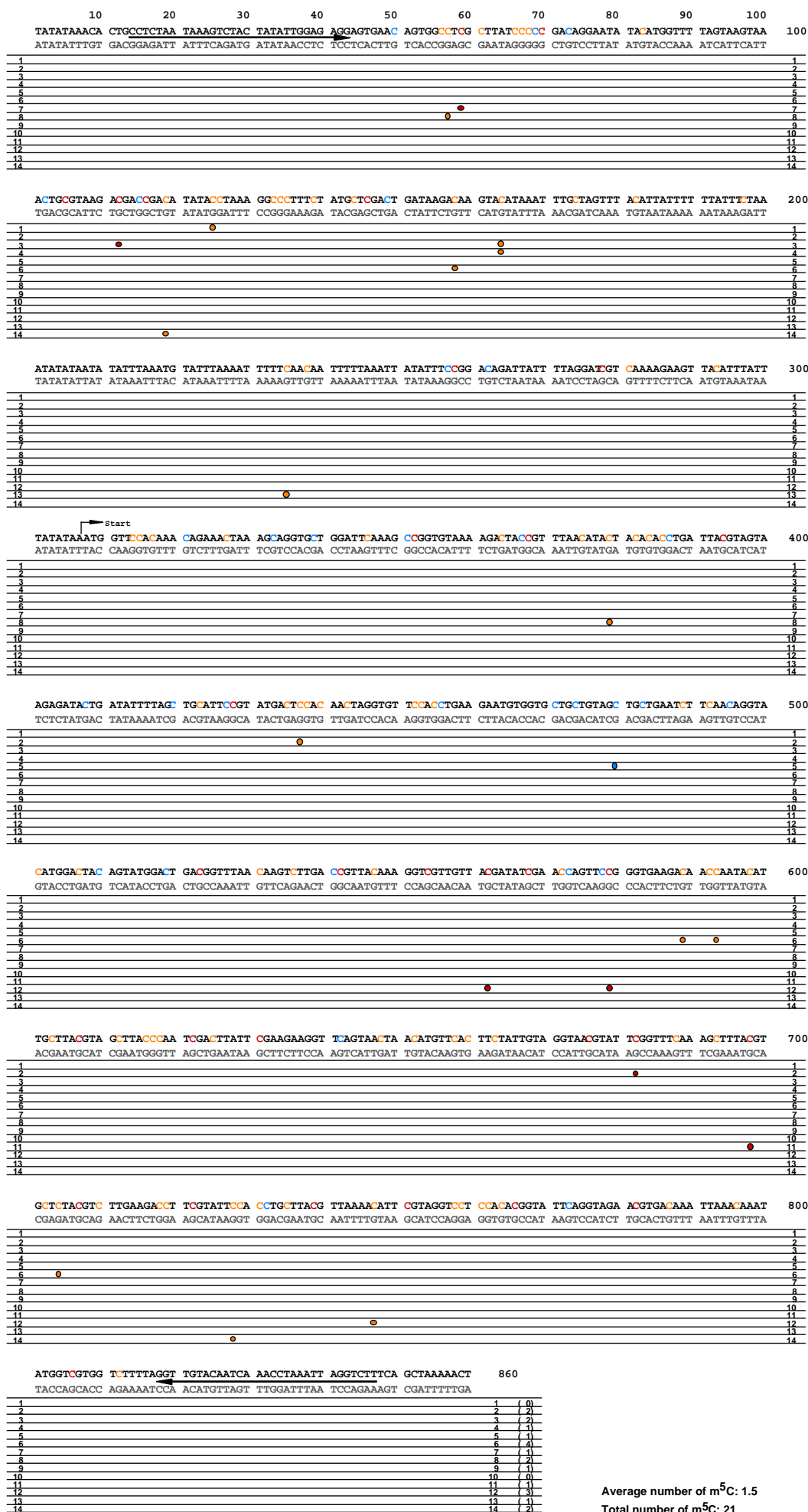
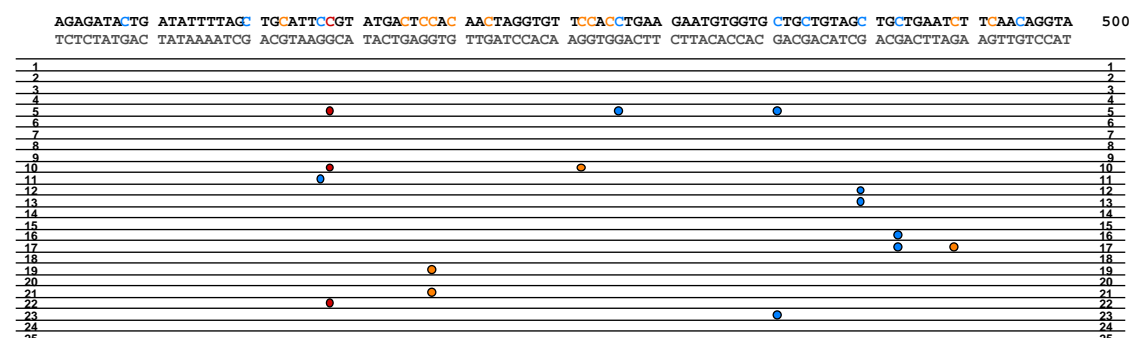
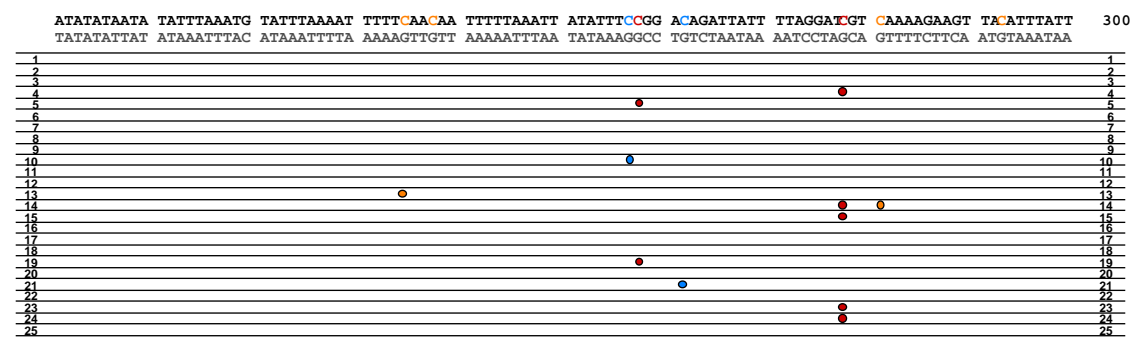
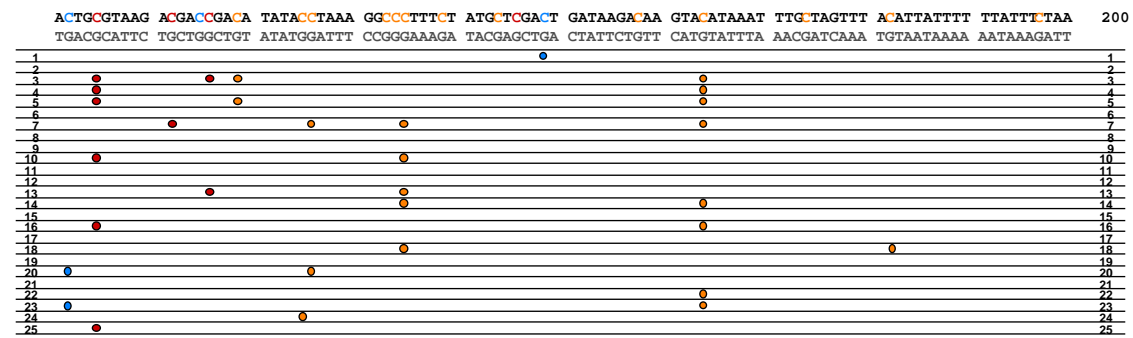
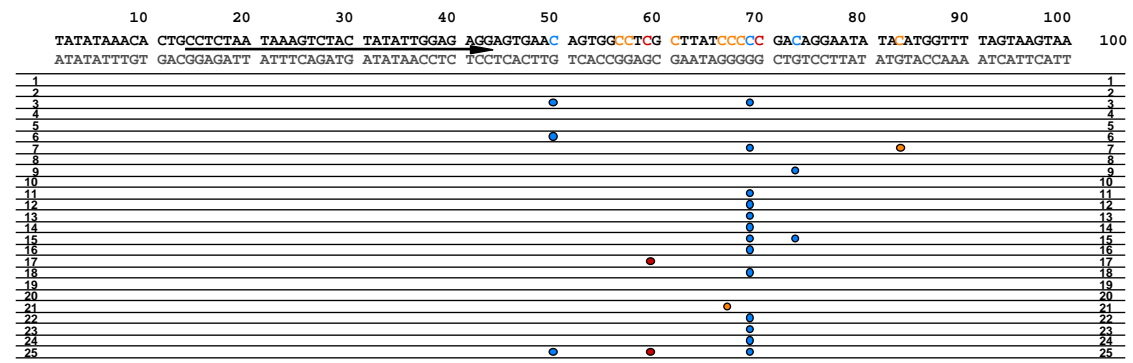


A. wt/mt+ (CC125), vegetative cells, A strand

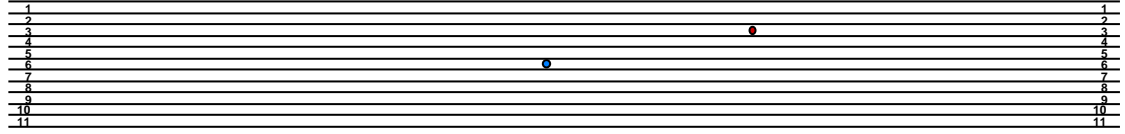


B. wt/mt+ (CC125), gametes, A strand

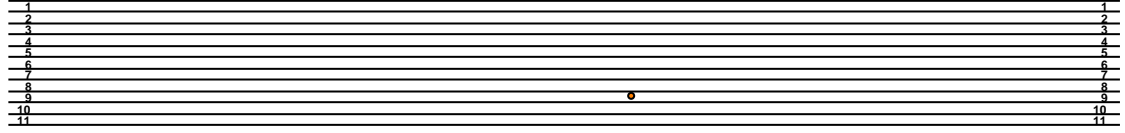


C. wt/mt- (CC124), vegetative cells, A strand

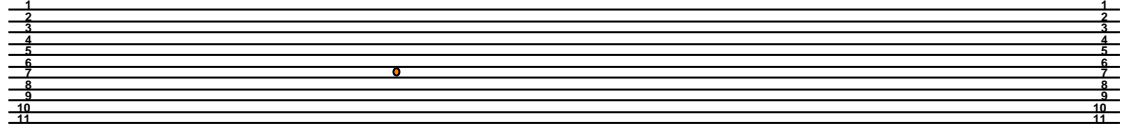
10 20 30 40 50 60 70 80 90 100
TATATAAACA CTGCTCTAA TAAAGTCTAC TATATTGGAG AGGAGTGAAC AGTGGCTCG CTTATCCCCG GACAGGAATA TACATGGTTT TAGTAAGTAA 100
ATATATTGT GACGGAGATT ATTCAGATG ATATAACCTC TCCTCACTTG TCACCGGAGC GAATAGGGGG CTGCTCTAT ATGTACCAA ATCATTCATT



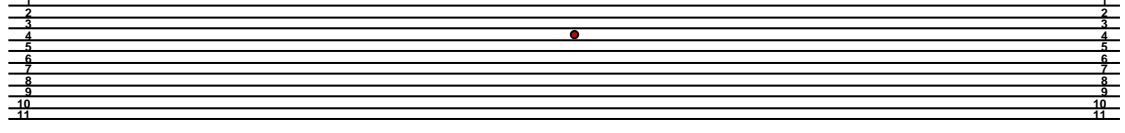
ACITGCGTAAG ACGACCGACA TATACCTAAA GGCCCTTTCT ATGCTCGACT GATAAGACAA GTACATAAAT TTGCTAGTTT AATTATTTT TTATTCTAA 200
TGACGCATTG TGCTGCTGT ATATGGATT CCGGAAAGA TACGAGCTGA CTATTCTGTT CATGTATTTA AACGATCAA TGTAAATAAA AATAAAGATT



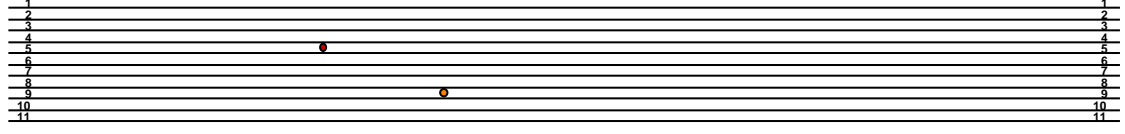
ATATATAATA TATTTAAATG TATTTAAAT TTTTCAACAA TTTTAAAT ATATTTCCGG ACAGATTATT TTAGGATCGT CAAAAGAAGT TACTTTATT 300
TATATATTAT ATAAATTAC ATAAATTTA AAAAGTTGT AAAAATTTA TATAAAGCC TGTCTAATAA AATCCTAGCA GTTTCTTCA ATGTAAATA



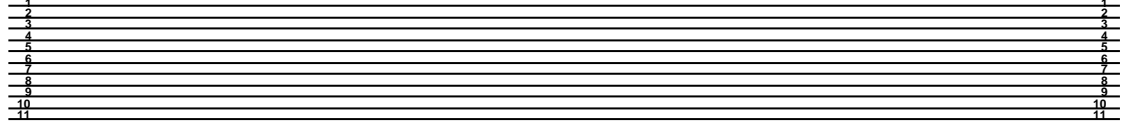
TATATAAATG GTTCCACAAA CAGAACTAA AGCAGGTGCT GGATTCAAG CCGGTGTAAA AGACTACCGT TTAACATACT ACACACCTGA TTACGTAGTA 400
ATATATTAC CAAGGTGTTT GTCTTTGATT TCGTCCACGA CCTAAGTTT GGCACATT TCTGATGCA AATTGTATGA TGTGTGGACT AATGCATCAT



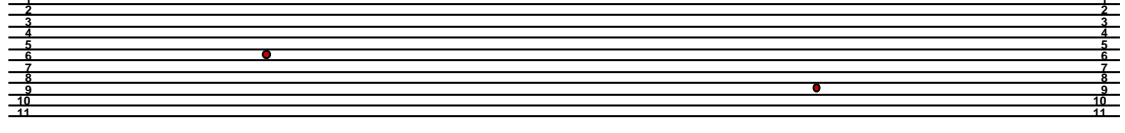
AGAGATACTG ATATTTTAC TGCACTCCGT ATGACTCCAC AACTAGGTGT TCCACCTGAA GAATGTGGTG CTGCTGTAGC TGCTGAATCT TCAACAGGTA 500
TCTCTATGAC TATAAATCG ACGTAAGCA TACTGAGGTG TTGATCCACA AGGTGGACTT CTTACACCAC GACGACATCG ACGACTTAGA AGTTGTCCAT



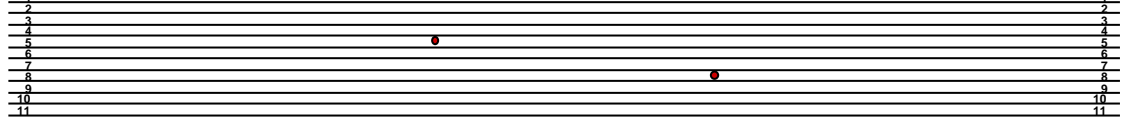
CAITGGACTAC AGTATGGACT GACGGTTTAA CAAGTTTGA CCGTTACAAA GGTCTGTGTT ACGATATCGA ACCAGTCCG GGTGAAGACA ACCAATCAT 600
GTACCTGATG TCATACCTGA CTGCCAAAT GTTCAGAACT GGCAATGTTT CCAGCAACAA TGCTATAGCT TGGTCAAGGC CCACTTCTGT TGGTTATGTA



TGCTTACGTA GCTTACCCAA TCGACTTATT CGAAGAAGGT TTAGTAACTA ACATGTTAC TTCTATTGTA GGTAACGTAT TCGGTTTCAA AGCTTTACGT 700
ACGAATGCAT CGAATGGTT AGCTGAATA GCTTCTTCCA AGTCATTGAT TGTACAAGTG AAGATAACAT CCATTGCATA AGCCAAAGTT TCGAAATGCA



GCTCTACGTC TTGAAGCCT TCGTATTCCA CCTGCTTACG TTAAAAATT CGTAGGTCCT CCACACGGTA TTACGGTAGA ACGTGACAAA TTAACAAT 800
CGAGATGCAG AACTTCTGGA AGCATAAGGT GGACGAATGC AATTTGTAA GCATCCAGGA GGTGTGCCAT AAGTCCATCT TGCCTGTTT AATTTGTTA



ATGGTCTGG TTTTGTAGT TGTACAATCA AACCTAAAT AGGTCTTTCA GCTAAAACT 860
TACCAGCACC AGAAAATCCA ACATGTTAGT TTGATTAA TCCAGAAAGT CGATTTTGA

1	1	(0)
2	2	(0)
3	3	(1)
4	4	(1)
5	5	(2)
6	6	(2)
7	7	(1)
8	8	(1)
9	9	(3)
10	10	(0)
11	11	(0)

Average number of m⁵C: 1.0
Total number of m⁵C: 11

D. wt/mt- (CC124), gametes, A strand

10 20 30 40 50 60 70 80 90 100
 TATATAACA CTGCCTCTAA TAAAGTCTAC TATATTGGAG AGGAGTGAAC AGTGGCCTCG CTTATCCCC GACAGGAATA TACATGGTTT TAGTAAGTAA 100
 ATATATTGT GACGGAGATT ATTCAGATG ATATAACCTC TCCTCACTTG TCACCGGAGC GAATAGGGGG CTGTCTTAT ATGTACCAA ATCATTCAAT

ACTGCCAAG ACGACCGACA TATACCTAAA GGCCTTTCT ATGCTCGACT GATAAGACAA GTACATAAAT TTGTAGTTT ACATTATTTT TTATTETAA 200
 TGACGCATTC TGCTGGCTGT ATATGGATT CCGGAAAGA TACGAGCTGA CTATTCTGTT CATGTATTTA AACGATCAA TGTAATAAAA AATAAAGATT

ATATATAATA TATTTAAATG TATTTAAAT TTTTCAACAA TTTTAAAT ATATTCCGG ACAGATTATT TTAGGATCT CAAAAGAAGT TACATTTATT 300
 TATATATTAT ATAAATTTAC ATAAATTTTA AAAAGTTGTT AAAAATTTAA TATAAAGGCC TGTCTAATAA AATCCTAGCA GTTTTCTCA ATGTAATAA

Start
 TATATAAATG GTTCCACAAA CAGAACTAA AGCAGGTGT GGATTCAAAG CCGGTGTAAA AGACTACCGT TTAACATACT ACACACCTGA TTACGTAGTA 400
 ATATATTAC CAAGGTGTTT GTCTTTGATT TCGTCCACGA CCTAAGTTTC GGCCACATT TCTGATGGCA AATTGTATGA TGTGTGGACT AATGCATCAT

AGAGATACTG ATATTTTAC TGCATTCCGT ATGACTCCAC AACTAGGTGT TCCACCTGAA GAATGTGGTG CTGCTGTAGC TGCTGAATCT TCAACAGGTA 500
 TCTCTATGAC TATAAATCG ACGTAAGGCA TACTGAGGTG TTGATCCACA AGGTGGACTT CTTACACCAC GACGACATCG ACGACTTAGA AGTTGTCCAT

CATGGACTAC AGTATGGACT GACGGTTTAA CAAGCTTGA CCGTTACAAA GGTCGTTGTT ACGATATCGA ACCAGTCCG GGTGAAGACA ACCAATACAT 600
 GTACCTGATG TCATACCTGA CTGCCAATG GTTCAGAACT GGCAATGTTT CCAGCAACAA TGCTATAGCT TGGTCAAGGC CCACTTCTGT TGGTTATGTA

TGCTTACGTA GCTTACCCAA TCGACTTATT CGAAGAAGGT TTAGTAACTA ACATGTTTAC TTCTATTGTA GGTAACTGAT TCGGTTTCAA AGCTTTACGT 700
 ACGAATGCAT CGAATGGGT AGCTGAATAA GCTTCTTCCA AGTCATTGAT TGTACAAGTG AAGATAACAT CCATTGCATA AGCCAAAGTT TCGAAATGCA

GCTCTACGTC TTGAAGACCT TCGTATTCCA CCGCTTACG TTA AAAAATT CGTAGGTCCT CCACACGGTA TTCAGGTAGA ACGTGACAAA TTA AAAAAT 800
 CGAGATGCAG AACTTCTGGA AGCATAAGGT GGAAGAATGC AATTTTGTAA GCATCCAGGA GGTGTGCCAT AAGTCCATCT TGCCTGTTT AATTTGTTTA

ATGGTCGTTG TTTTTAGGT TGTACAATCA AACCTAAAT AGTCTTCCA GCTAAAAAT 860
 TACCAGCACC AGAAAATCCA ACATGTTAGT TTGATTTAA TCCAGAAAGT CGATTTTGA

1	1	(1)
2	2	(0)
3	3	(2)
4	4	(0)
5	5	(1)
6	6	(0)
7	7	(1)
8	8	(0)
9	9	(1)
10	10	(0)

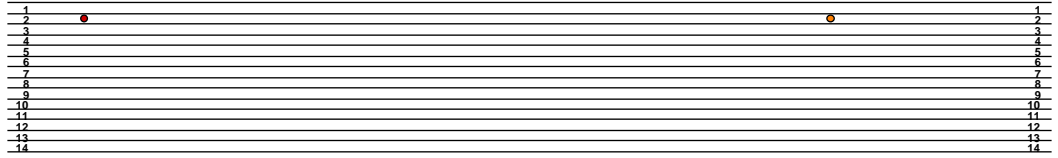
Average number of m⁵C: 0.6
 Total number of m⁵C: 6

E. me-1/mt+ (CC1154), vegetative cells, A strand

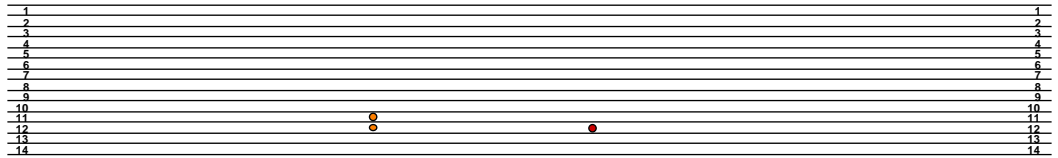
10 20 30 40 50 60 70 80 90 100
TATATAACA CTGCCTCTAA TAAAGTCTAC TATATTGGAG AGGAGTGAA AGTGGCTCG CTTATCCCC GACAGGAATA TACATGGTTT TAGTAAGTAA 100
ATATATTTGT GACGGAGATT ATTCAGATG ATATAACCTC TCCTCACTTG TCACCCGAGC GAATAGGGGG CTGTCCTTAT ATGTACCAA ATCATTTCAT



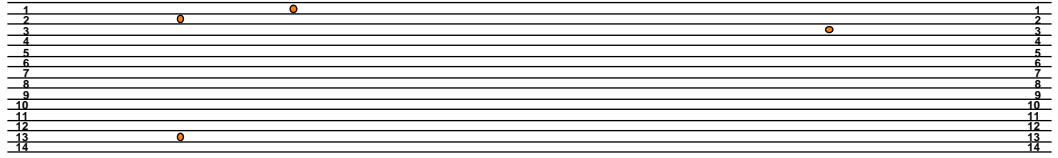
ACTGCGTAAG ACGACCGACA TATACTAAA GGCCCTTCT ATGCTCGACT GATAAGAAA GTACATAAAT TTG TAGTTT ACATTATTT TTATTCTAA 200
TGACGCATTC TGCTGGCTGT ATATGGATT CCGGGAAGA TACGAGCTGA CTATTCTGTT CATGTATTA AACGATCAA TGTAAATAAA AATAAAGATT



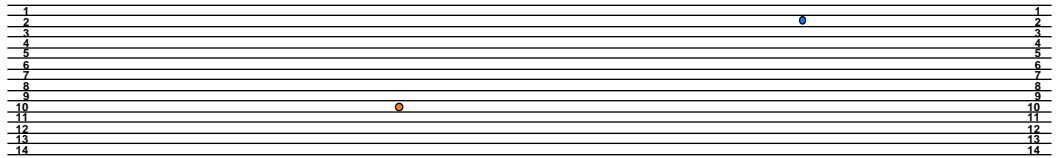
ATATATAATA TATTTAAATG TATTTAAAA TTTTCAACAA TTTTAAAT ATATTTCGG ACGATTATT TTAGGATGT CAAAAGAAGT TACATTTATT 300
TATATATTAT ATAAATTTAC ATAAATTTTA AAAAGTTGTT AAAAATTTAA TATAAAGGCC TGTCTAATAA AATCCTAGCA GTTTTCTTCA ATGTAAATAA



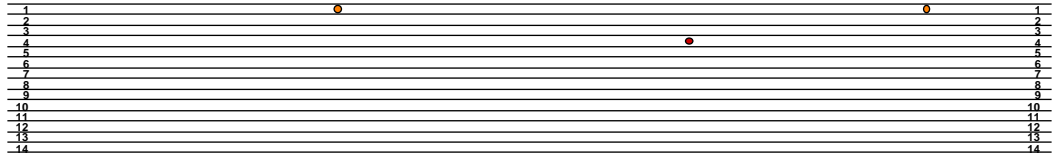
Start
TATATAAATG GTTCCACAAA CAGAACTAA AGTAGGTCT GGATTCAAAG CCGGTGTAAA AGATACCGT TTAACATACT ACACACTGA TTACGTAGTA 400
ATATATTTAC CAAGGTGTTT GTCCTTGATT TCGTCCACGA CCTAAGTTTC GGCCACATT TCTGATGCA AATTGTATGA TGTGTGACT AATGCATCAT



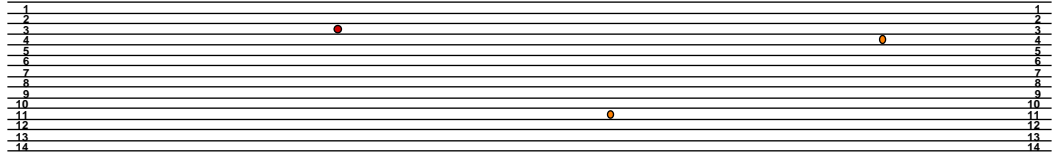
AGAGATACTG ATATTTTAGT TGCAATTCGT ATGACTCCAC AACTAGGTGT TCCACTGAA GAATGTGGTG CTGCTGTAGC TGCTGAATCT TCAACAGGTA 500
TCTCTATGAC TATAAATCG ACGTAAGCA TACTGAGTG TTGATCCACA AGGTGGACTT CTTACACCAC GACGACATCG ACGACTTAGA AGTTGTCCAT



CAATGGATAC AGTATGGACT GACGGTTTAA CAAGCTTGA CCGTTACAAA GGTCGTTGTT ACGATATCGA ACCAGTTCGG GGTGAAGAA ACCAATACAT 600
GTACCTGATG TCATACCTGA CTGCCAATT GTTCAGAACT GGCAATGTT CCAGCAACAA TGCTATAGCT TGGTCAAGC CCACCTTCTGT TGGTTATGTA



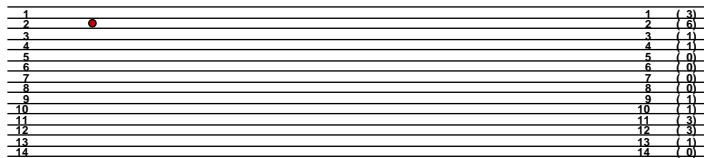
TGCTTACGTA GTTACCCAA TCGACTTATT CGAAGAAGGT TTAGTAAC TAATGTTAC TTCTATTGTA GGTAACGTAT TCGGTTTCAA AGCTTTACGT 700
ACGAATGCAT CGAATGGGTT AGCTGAATA GCTTCTTCCA AGCATTGAT TGTACAAGTG AAGATAACAT CCATTGCATA AGCCAAAGTT TCGAAATGCA



GCTCTACGTC TTGAAGACT TCGATTCCA CCGTTTAC TTAACAATT CGTAGTCTT CACACGGTA TTCAGGTAGA ACGTGAACA TTAACAAT 800
CGAGATGCAG AACTTCTGGA AGCATAAGGT GGACGAATGC AATTTTGTAA GCATCCAGGA GGTGTGCCAT AAGTCCATCT TGCACTGTTT AATTTGTTA

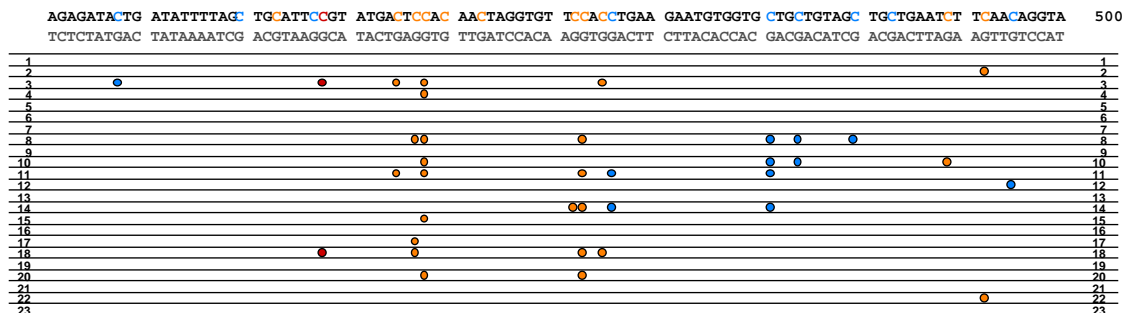
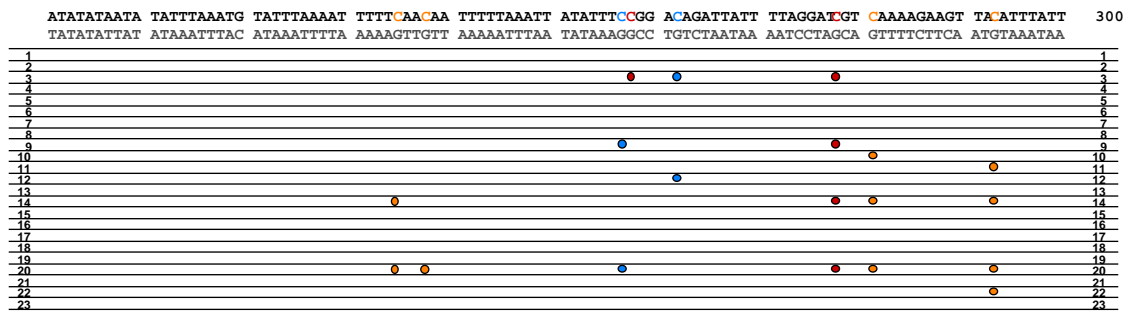
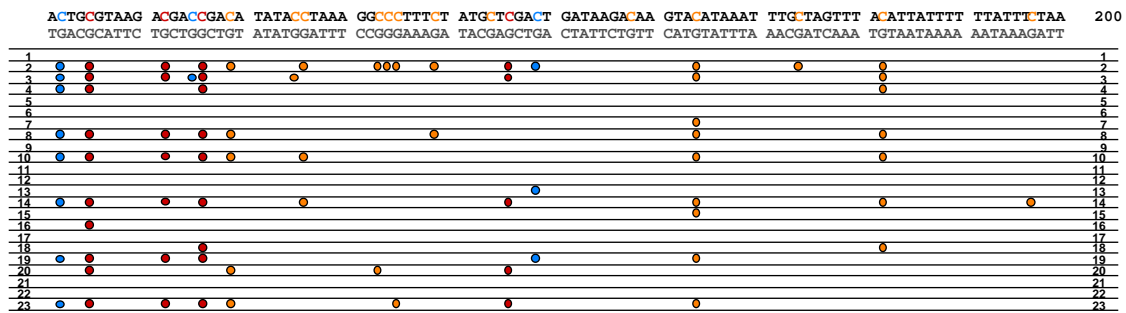
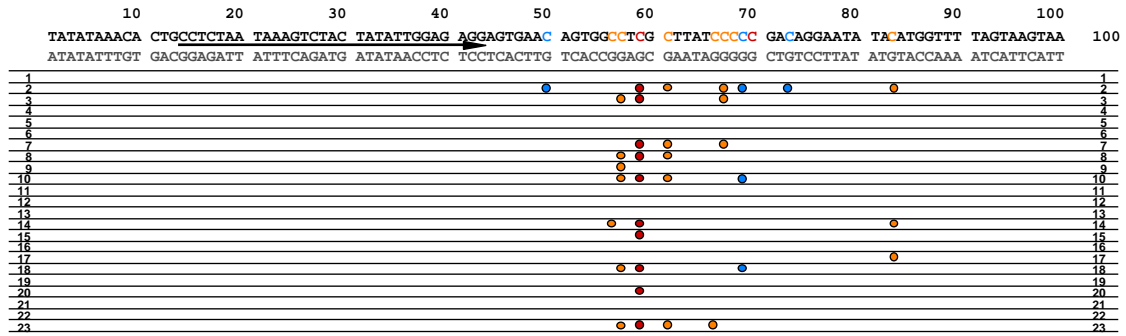


ATGGTCTGGG TCTTTTAGGT TGTACAATCA AACCTAAAT AGGCTTTTCA GCTAAAACT 860
TACCAGCACC AGAAAATCCA ACATGTTAGT TTGATTTAA TCCAGAAAGT CGATTTTGA

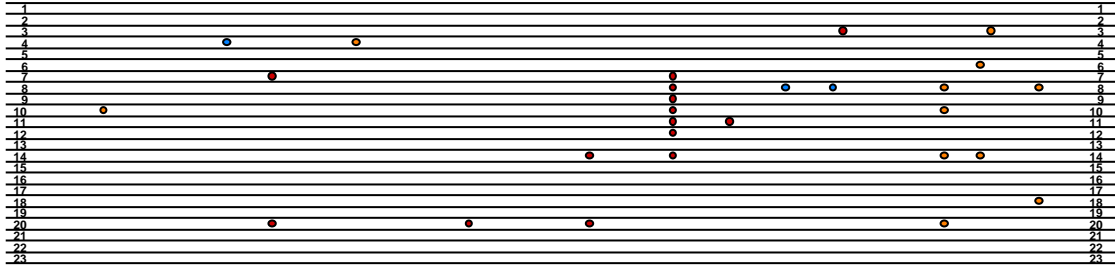


Average number of m⁵C: 1.4
Total number of m⁵C: 20

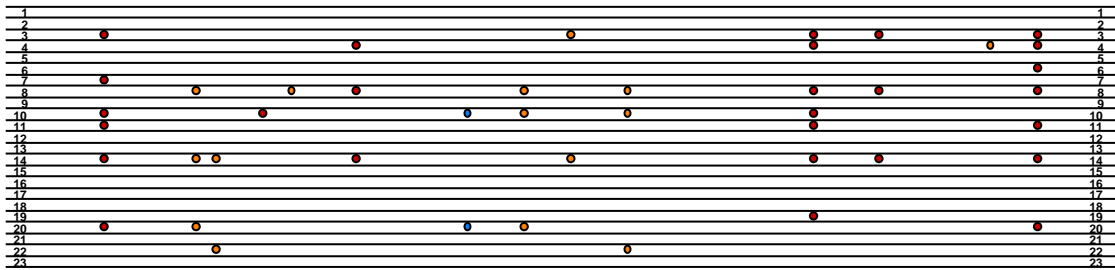
F. me-1/mt+ (CC1154), gametes, A strand



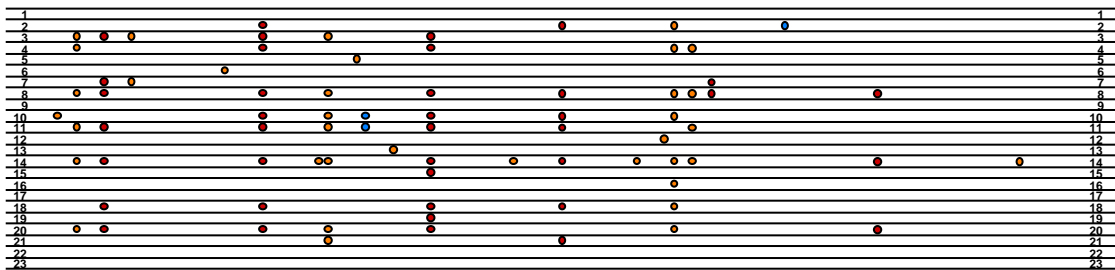
CATGGACTAC AGTATGGACT GACGGTTTAA CAAGTCTTGA CCGTTACAAA GGTCGGTTGTT ACGATATCGA ACCAGTTCCG GGTGAAGACA ACCAATACAT 600
 GTACCTGATG TCATACCTGA CTGCCAAATT GTTCAGAACT GGCAATGTTT CCAGCAACAA TGCTATAGCT TGGTCAAGGC CCACCTCTGT TGGTTATGTA



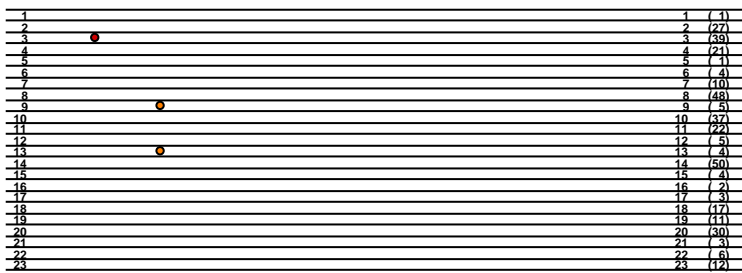
TGCTTACGTA GATTACCCAA TCGACTTATT CGAAGAAGGT TTAGTAACTA ACATGTTAC TTCTATTGTA GGTAACGTAT TCGGTTCCAA AGCTTTACGT 700
 ACGAATGCAT CGAATGGGTT AGCTGAATAA GCTTCTTCCA AGTCATTGAT TGTACAAGTG AAGATAACAT CCATTGCATA AGCCAAAGTT TCGAAATGCA



GCTCTACGTC TTGAAGACCT TCGATTCCAA CBTGCTTACG TTAAAACATT CGTAGGTCTT CCACACGGTA TTCAGGTAGA ACGTGACAAA TTAACAACAT 800
 CGAGATGCAG AACTTCTGGA AGCATAAGGT GGACGAATGC AATTTTGTAA GCATCCAGGA GGTGTGCCAT AAGTCCATCT TGCACCTGTT AATTTGTTTA



ATGGTCGGT TCTTTTAGGT TGTACAATCA AACCTAAATT AGTCTTTCA GCTAAAACT 860
 TACCAGCACC AGAAAAATCA ACATGTTAGT TTGGATTAA TCCAGAAAGT CGATTTTGA



Average number of m⁵C: 15.7

m⁵C numbers
 CpG : 139 (38.4 %)
 CpNpG : 51 (14.1 %)
 Others : 172 (47.5 %)
 Total : 362

G. me-1/mt- (CC1155), vegetative cells, A strand

10 20 30 40 50 60 70 80 90 100 100
TATATAACA CTGCCTCTAA TAAAGTCTAC TATATTGGAG AGGAGTGAAC AGTGGCCTCG CTTATCCCCC GACAGGAATA TAATGGTTT TAGTAAGTAA 100
ATATATTGT GACGGAGATT ATTCAGATG ATATAACCTC TCCTCACTTG TCACCGGAGC GAATAGGGGG CTGTCCTTAT ATGTACCAAA ATCATTTCAT

1 1
2 2
3 3
4 4
5 5
6 6
7 7
8 8
9 9
10 10
11 11
12 12

ACTGCCTAAG ACGACCGACA TATACCTAAA GGCCCTTTCT ATGCTCGACT GATAAGACAA GTACATAAAT TTG TAGTGT ACATTATTTT TTATTETAA 200
TGACGCATTC TGCTGGCTGT ATATGGATT CCGGGAAGA TACGAGCTGA CTATTCTGTT CATGTATTTA AACGATCAAA TGTAATAAAA AATAAAGATT

1 1
2 2
3 3
4 4
5 5
6 6
7 7
8 8
9 9
10 10
11 11
12 12

ATATATAATA TATTTAAATG TATTTAAAA TTTTCAACAA TTTTAAATT ATATTCCGG ACAGATTATT TTAGGATCGT CAAAAGAAGT TACATTTATT 300
TATATATTAT ATAAATTTAC ATAAATTTTA AAAAGTTGTT AAAAATTTTA TATAAAGGCC TGCTAATAA AATCCTAGCA GTTTCTTCA ATGTAAATAA

1 1
2 2
3 3
4 4
5 5
6 6
7 7
8 8
9 9
10 10
11 11
12 12

Start
TATATAAATG GTTCCACAAA CAGAACTAA AGCAGGTGCT GGATTCAAAG CCGGTGTAAA AGACTACCGT TTAACTACT ACACACCTGA TTACGTAGTA 400
ATATATTAC CAAGGTGTTT GTCTTTGATT TCGTCCACGA CCTAAGTTTC GGCCACATTT TCTGATGGCA AATTGTATGA TGTGTGGACT AATGCATCAT

1 1
2 2
3 3
4 4
5 5
6 6
7 7
8 8
9 9
10 10
11 11
12 12

AGAGATACTG ATATTTTACG TGCAATTCGT ATGACTCCAC AACTAGGTGT TCCACCTGAA GAATGTGGTG CTGCTGTAGC TGCTGAATCT TCAACAGGTA 500
TCTCTATGAC TATAAAATCG ACGTAAGGCA TACTGAGGTG TTGATCCACA AGGTGGACTT CTTACACCAC GACGACATCG ACGACTTAGA AGTTGTCCAT

1 1
2 2
3 3
4 4
5 5
6 6
7 7
8 8
9 9
10 10
11 11
12 12

CATGGACTAC AGTATGGACT GACGGTTTAA CAAGTCTTGA CCGTTACAAA GGTCTGTGTT ACGATATCGA ACCAGTTCGG GGTGAAGACA ACCAATACAT 600
GTACCTGATG TCATACCTGA CTGCCAAATT GTTCAGAACT GGCAATGTT CCAGCAACAA TGCTATAGCT TGGTCAAGGC CCACCTCTGT TGGTTATGTA

1 1
2 2
3 3
4 4
5 5
6 6
7 7
8 8
9 9
10 10
11 11
12 12

TGCTTACGTA GTTTACCCAA TCGACTTATT CGAAGAAGGT TTAGTAACTA ACATGTTTAC TTCTATTGTA GGTAACGTAT TCGGTTTCAA AGCTTTACGT 700
ACGAATGCAT CGAATGGGT AGCTGAATAA GCTTCTCCA AGTCATTGAT TGTACRAAGT AAGATAACAT CCATTGCATA AGCCAAAGTT TCGAAATGCA

1 1
2 2
3 3
4 4
5 5
6 6
7 7
8 8
9 9
10 10
11 11
12 12

GCTCTACGTC TTGAAGCCT TCGTATTCCA CCGCTTACG TTAACAATT CGTAGGTCCT CCACACGGTA TTCAGGTAGA ACGTGACAAA TTAACAAT 800
CGAGATGCAG AACTTCTGGA AGCATAAGGT GGACGAATGC AATTTGTAA GCATCCAGGA GGTGTGCCAT AAGTCCATCT TGCCTGTTT AATTTGTTTA

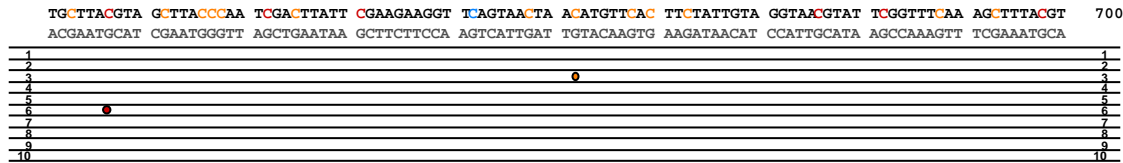
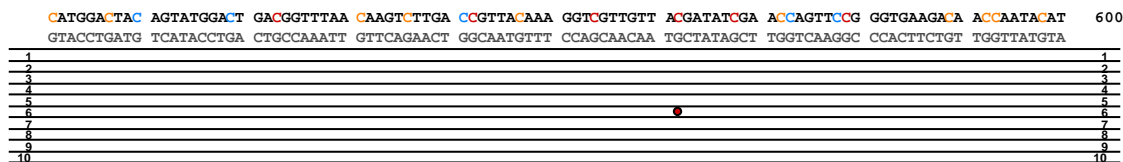
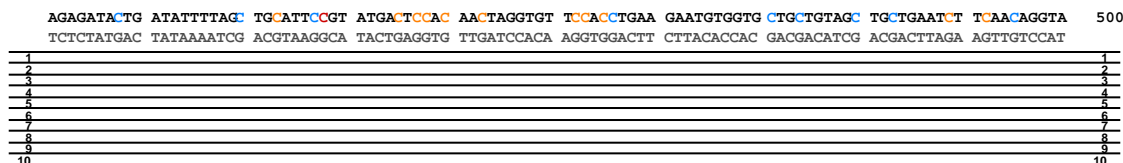
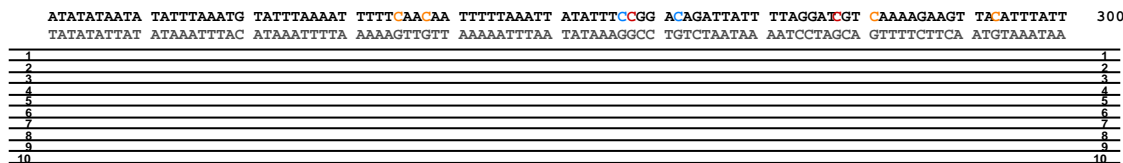
1 1
2 2
3 3
4 4
5 5
6 6
7 7
8 8
9 9
10 10
11 11
12 12

ATGGTCGTGG TTTTTAGGT TGTACAATCA AACCTAAATT AGGTCTTCA GCTAAAACT 860
TACCAGCACC AGAAAATCCA ACATGTTAGT TTGGATTTAA TCCAGAAAAT CGATTTTTGA

1 1 (1)
2 2 (0)
3 3 (0)
4 4 (0)
5 5 (1)
6 6 (0)
7 7 (0)
8 8 (0)
9 9 (0)
10 10 (0)
11 11 (1)
12 12 (0)

Average number of m⁵C: 0.3
Total number of m⁵C: 3

H. me-1/mt- (CC1155), gametes, A strand

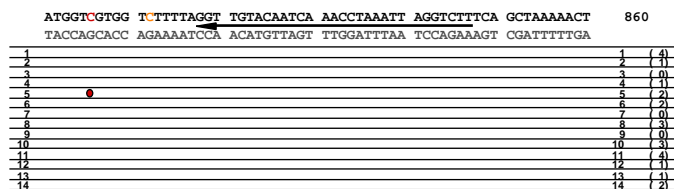
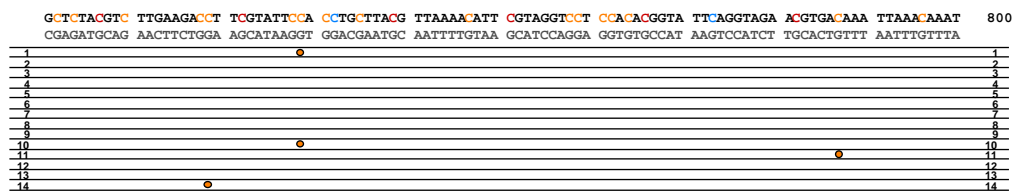
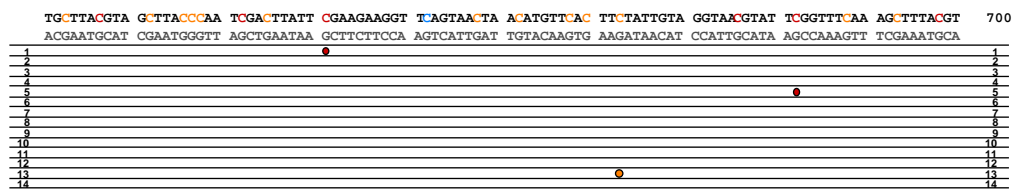
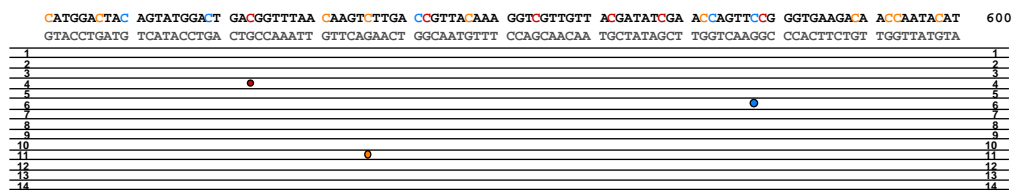
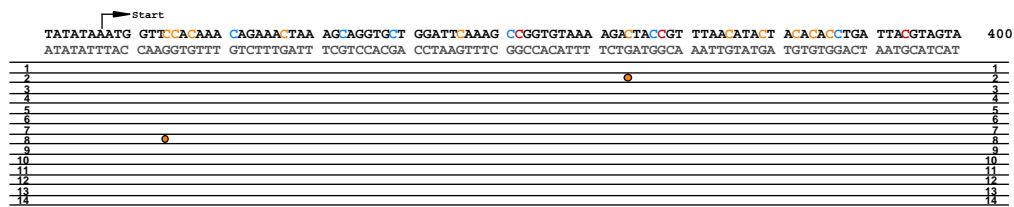
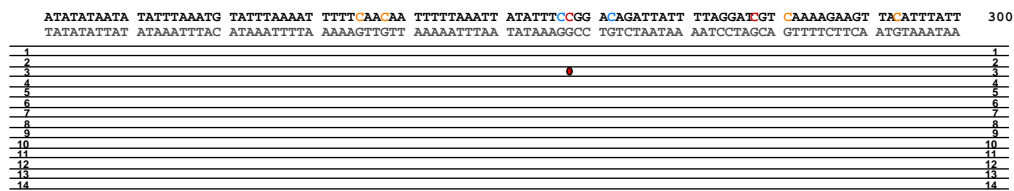
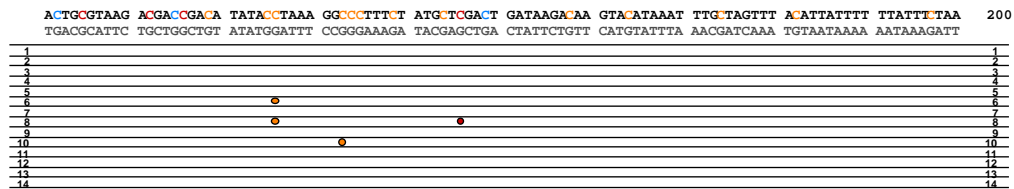
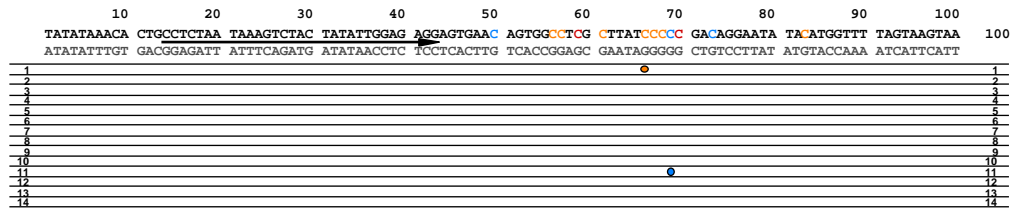


ATGGTCGTGG TCTTTTAGGT TGTACAATCA AACCTAAAT AGGCTTTTCA GCTAAAACT 860
 TACCAGCACC AGAAAATCCA ACATGTTAGT TTGGATTFAA TCCAGAAAGT CGATTTTGA

1	1	(1)
2	2	(0)
3	3	(3)
4	4	(5)
5	5	(0)
6	6	(6)
7	7	(0)
8	8	(1)
9	9	(0)
10	10	(3)

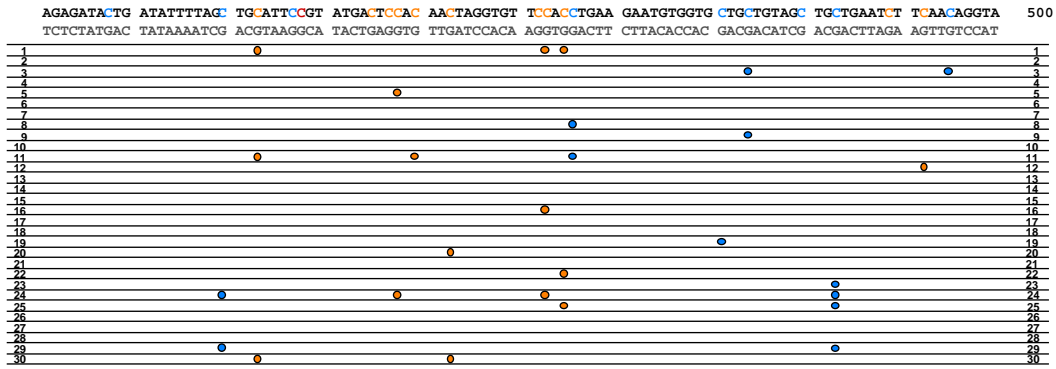
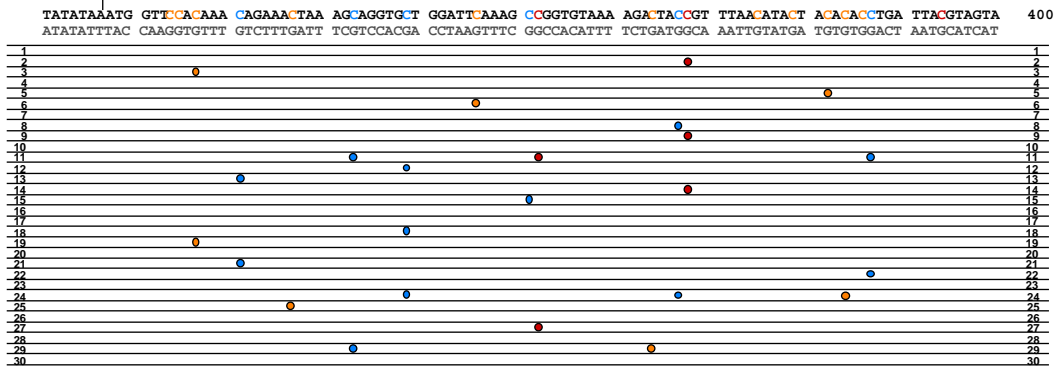
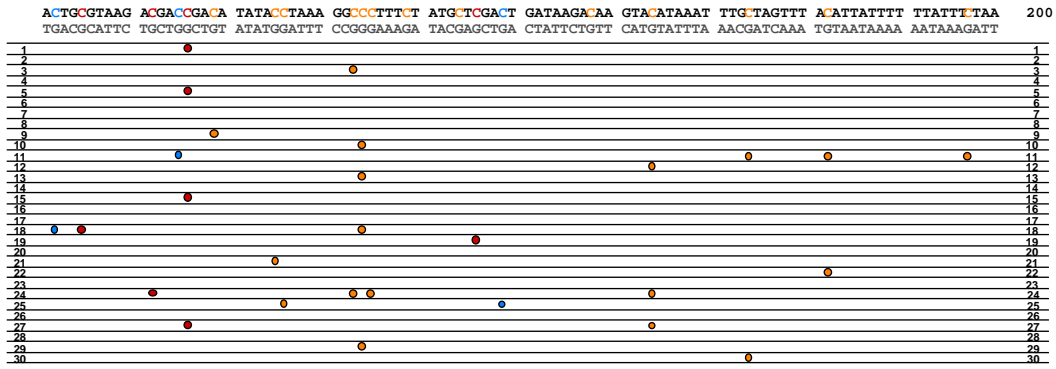
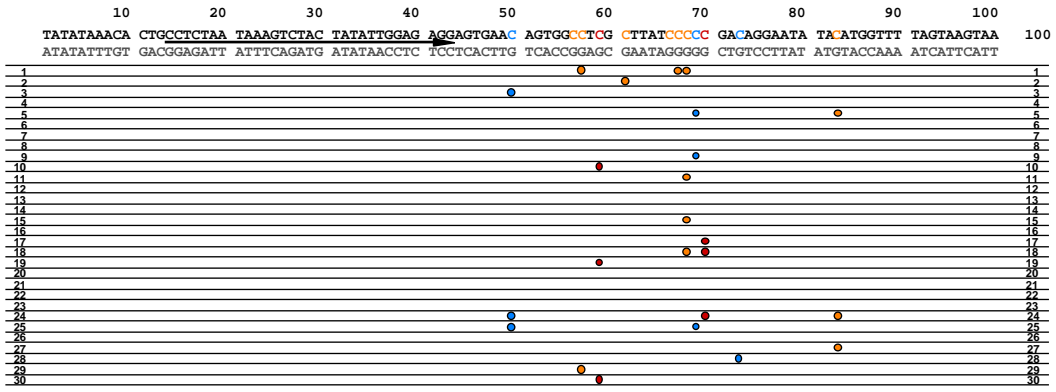
Average number of m⁵C: 1.9
 Total number of m⁵C: 19

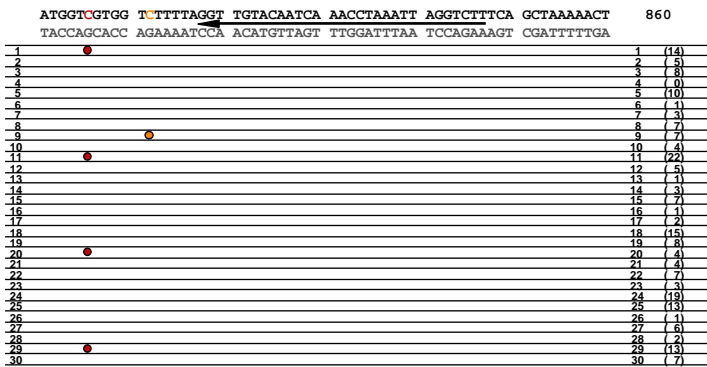
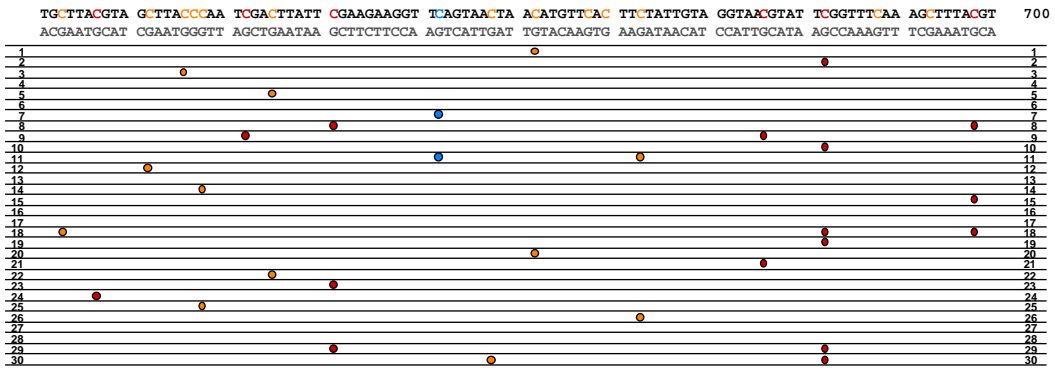
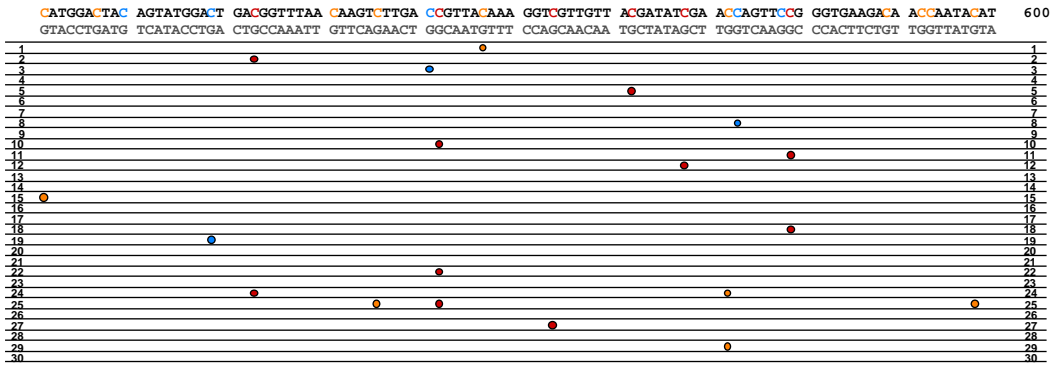
I. *mat-1/mt-* (CC1312), vegetative cells, A strand



Average number of m⁵C: 1.7
 Total number of m⁵C: 24

J. mat-1/mt- (CC1312), gametes, A strand

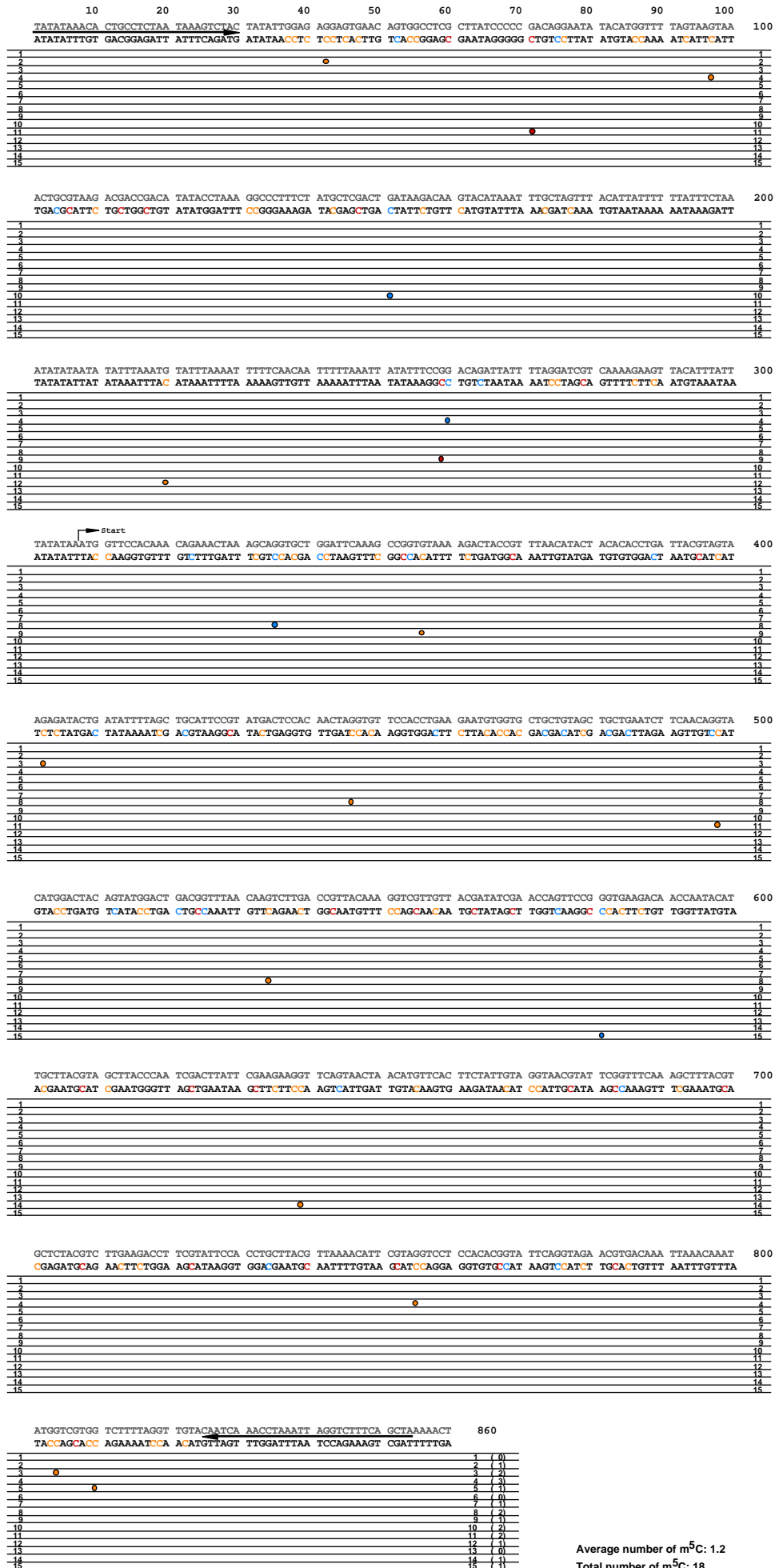




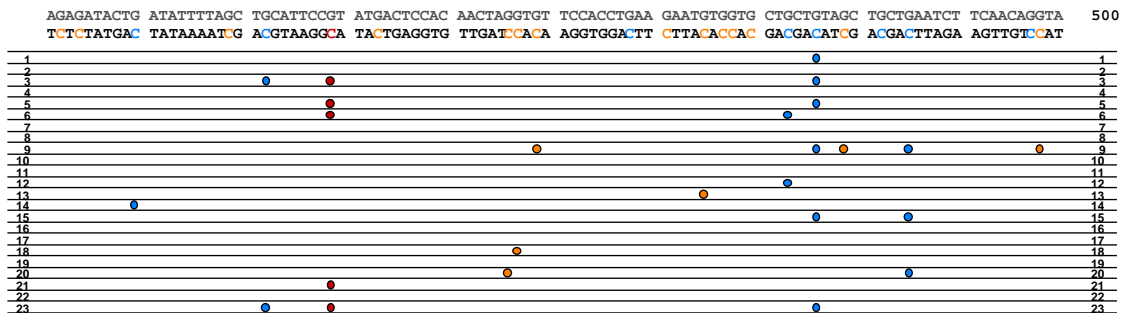
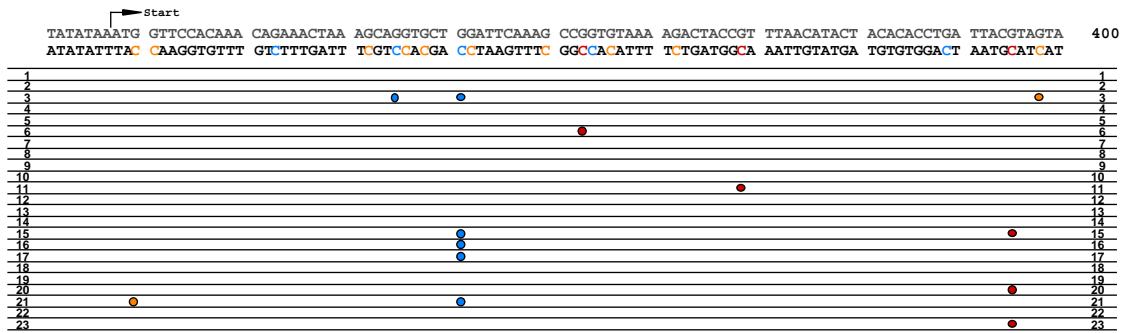
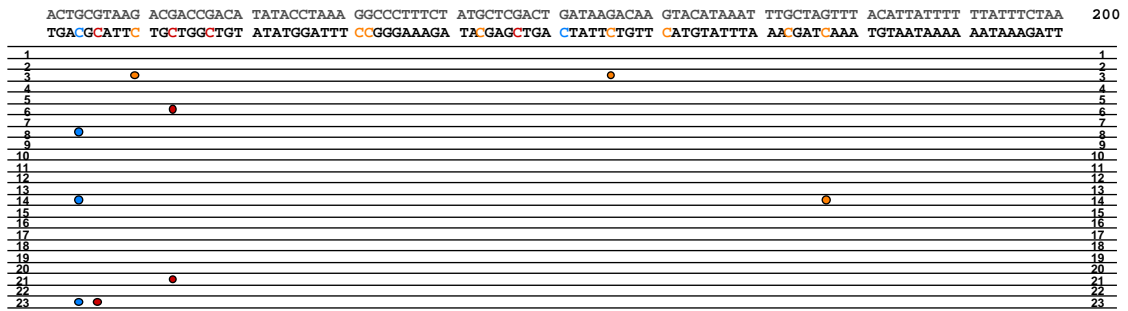
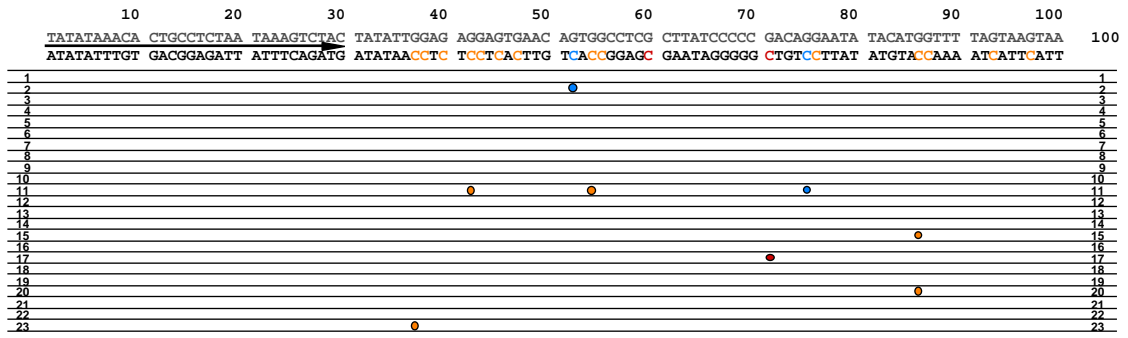
Average number of m⁵C: 6.7

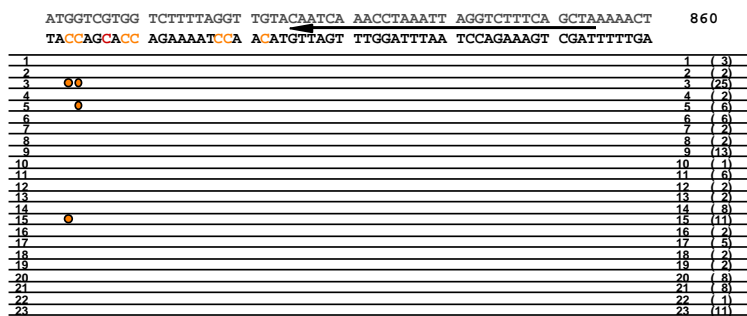
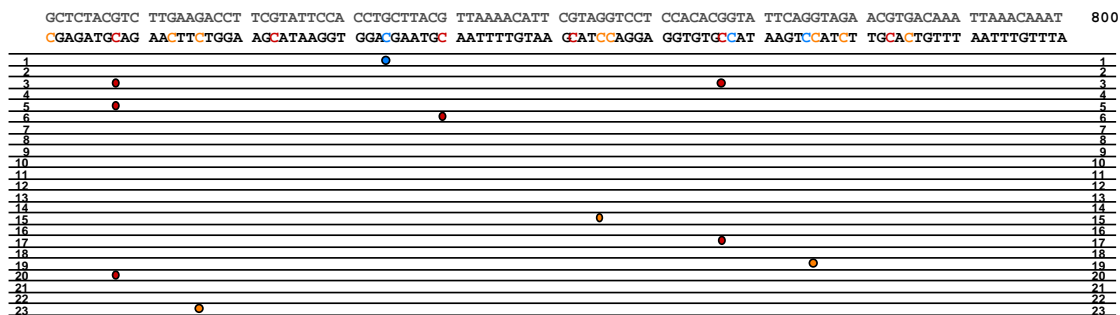
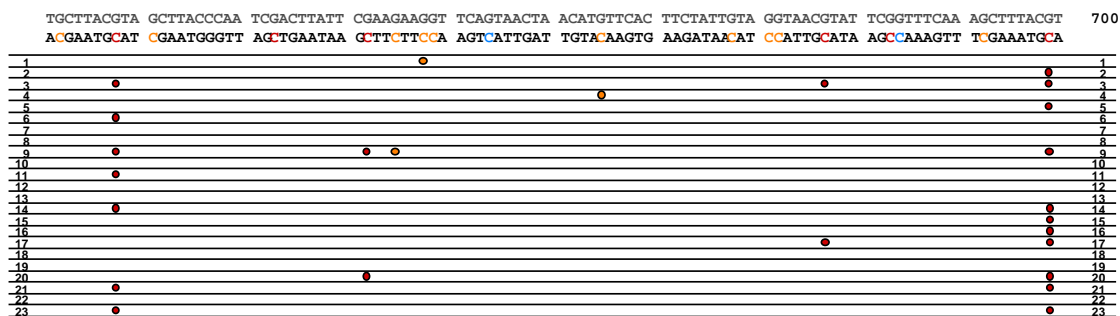
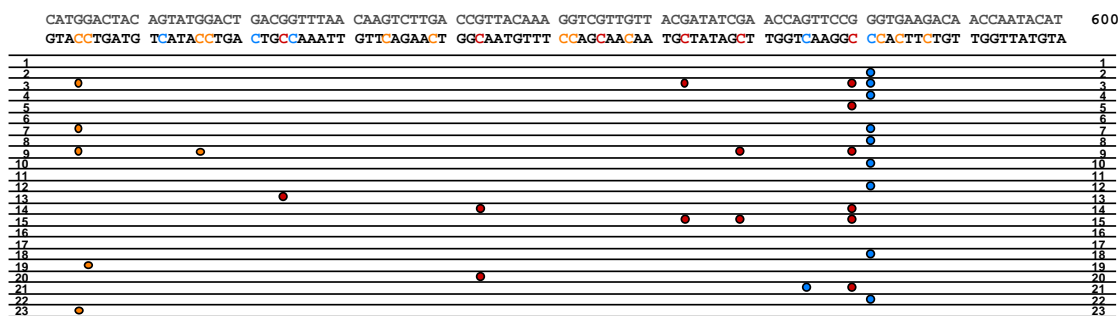
m⁵C numbers
 CpG : 68 (33.7 %)
 CpNpG : 47 (23.3 %)
 Others : 87 (43.0 %)
 Total : 202

K. wt/mt+ (CC125), vegetative cells, B strand



L. wt/mt+ (CC125), gametes, B strand

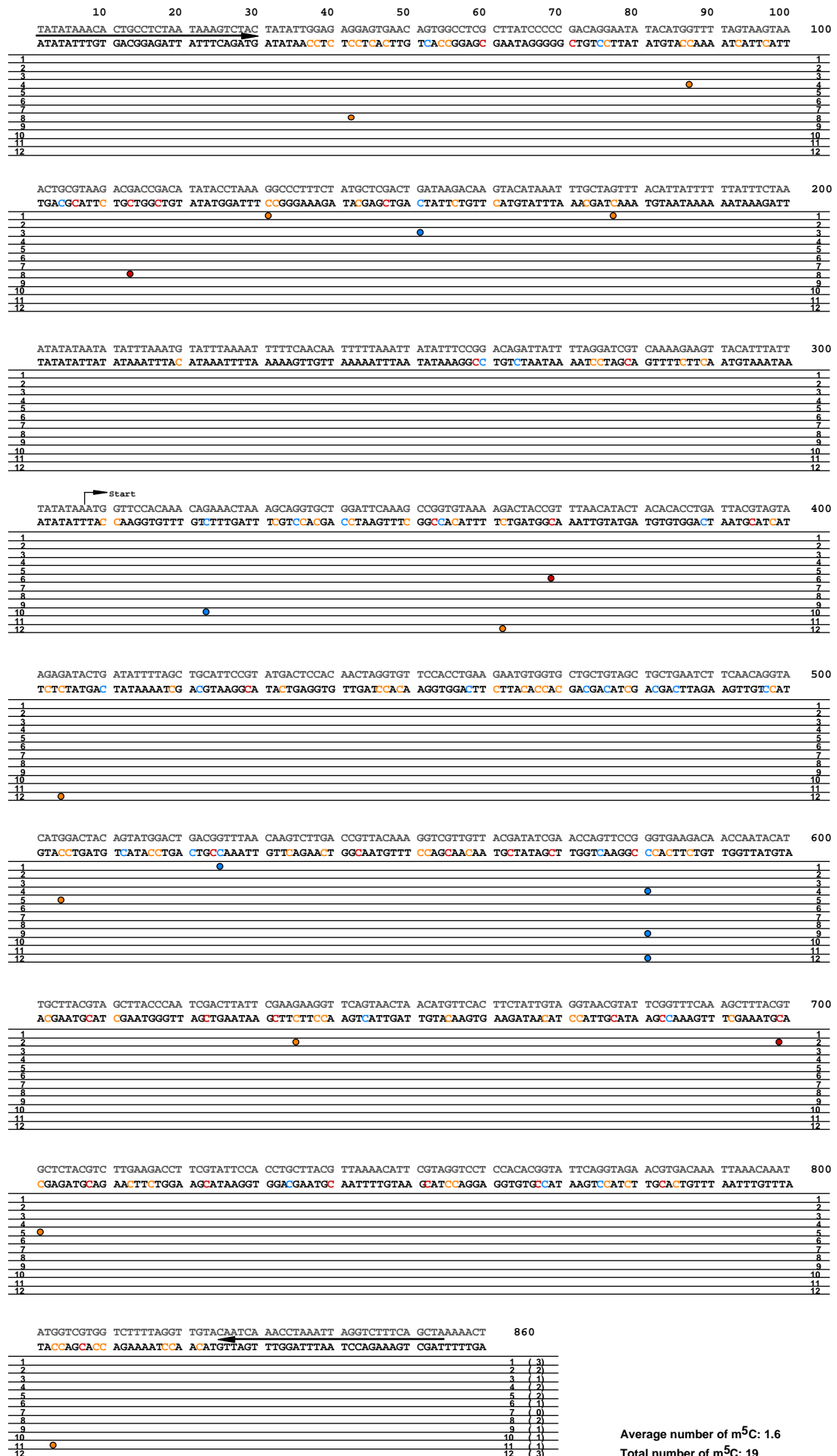




Average number of m⁵C: 5.7

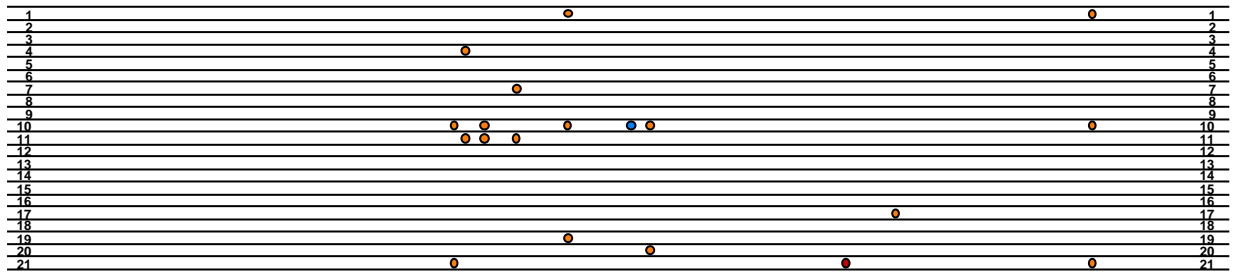
m⁵C numbers
 CpG : 57 (43.8 %)
 CpNpG : 37 (28.5 %)
 Others : 36 (27.7 %)
 Total : 130

M. me-1/mt+ (CC1154), vegetative cells, B strand

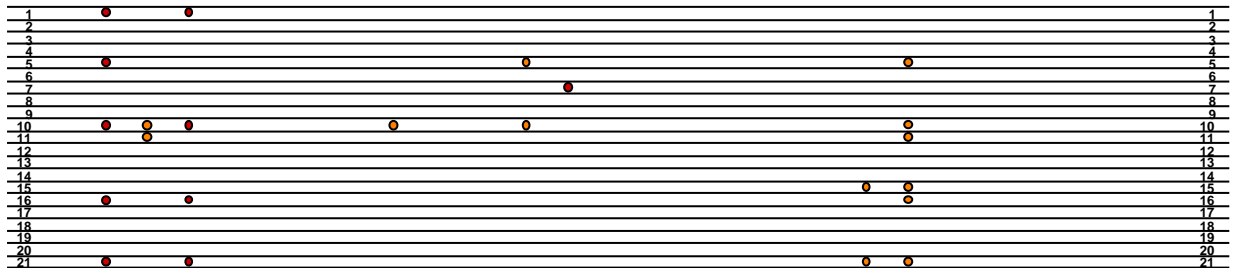


Average number of m⁵C: 1.6
Total number of m⁵C: 19

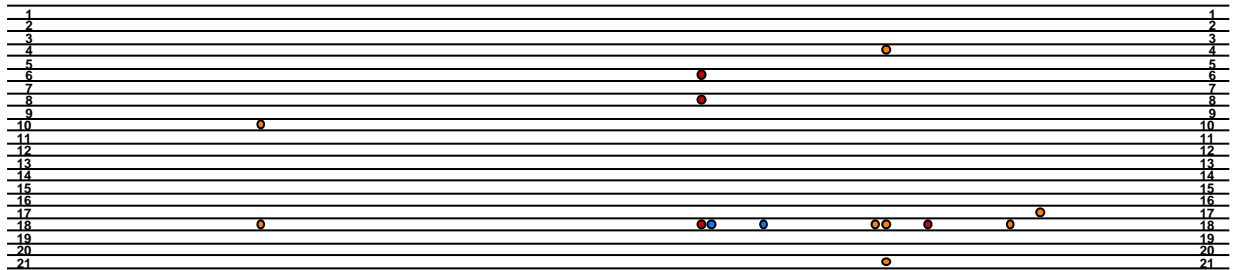
N. me-1/mt+ (CC1154), gametes, B strand



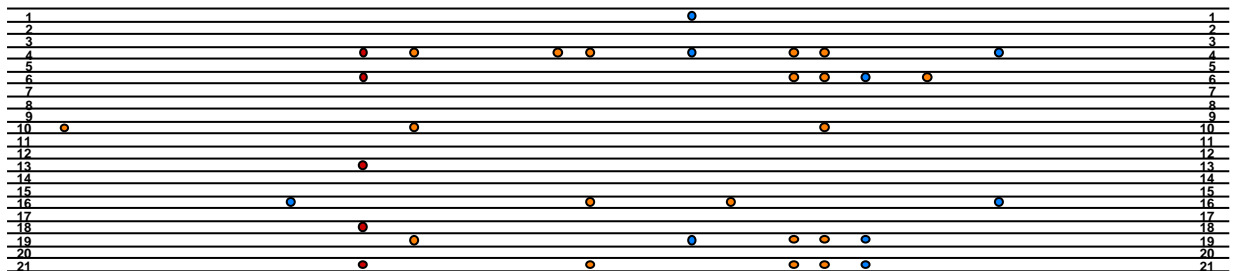
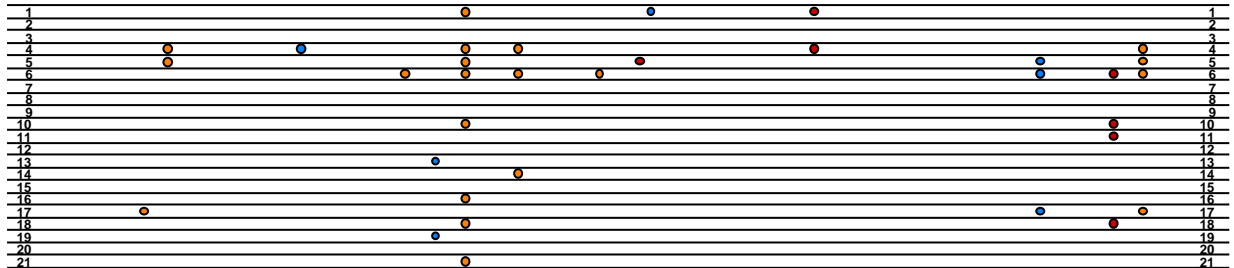
ACTGCGTAAG ACGACCGACA TATACCTAAA GGCCCTTTCT ATGCTCGACT GATAAGACAA GTACATAAAT TTGCTAGTTT ACATTATTTT TTATTTCTAA 200
 TGACGCATTG TGCCTGGCTGT ATATGGATT CCGGAAAAGA TAGAGCTGA CTATTCTGTT CATGTATTTA AAGATCAAA TGTAATAAAA AATAAAGATT

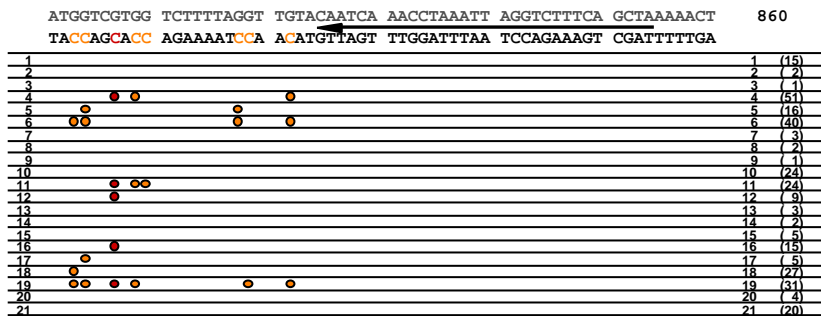
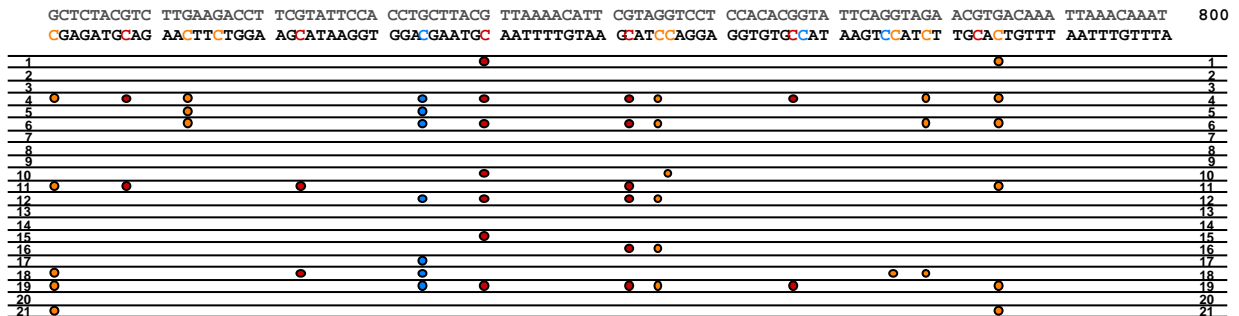
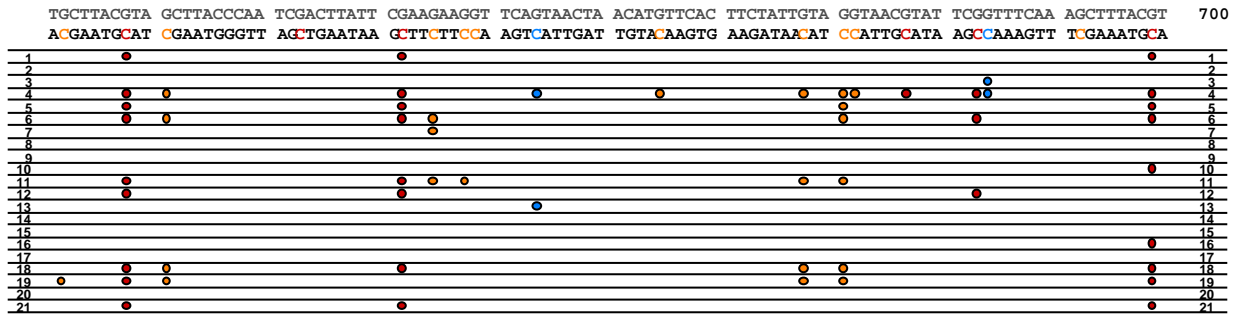
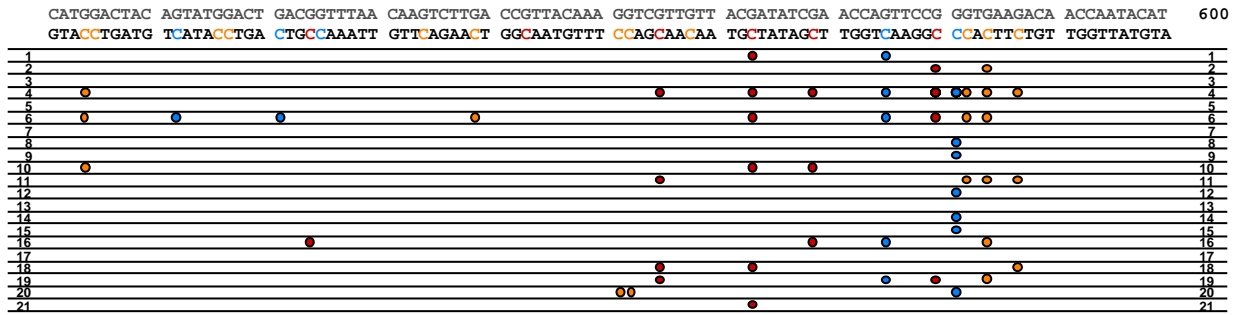


ATATATAATA TATTTAAATG TATTTAAAT TTTTCAACAA TTTTAAATT ATATTTCCGG ACAGATTATT TTAGGATCGT CAAAAGAAGT TACATTTATT 300
 TATATATTAT ATAAATTTA ATAAATTTTA AAAAGTTGTT AAAAATTTAA TATAAAGGCC TGTCTAATAA AATCTAGCA GTTTTCTTCA ATGTAAATAA



TATATAAATG GTTCCACAAA CAGAACTAA AGCAGGTGCT GGATTCAAAG CCGGTGTAAA AGACTACCGT TTAACATACT ACACACCTGA TTACGTAGTA 400
 ATATATTTA CAAGGTGTT GTTTTGATT TGTCCACGA CTTAAGTTT GCCACATTT TCTGATGCA AATTGTATGA TGTGTGGACT AATGCATCAT





Average number of m⁵C: 14.3

m⁵C numbers
 CpG : 99 (33.0 %)
 CpNpG : 43 (14.3 %)
 Others : 158 (52.7 %)
 Total : 300