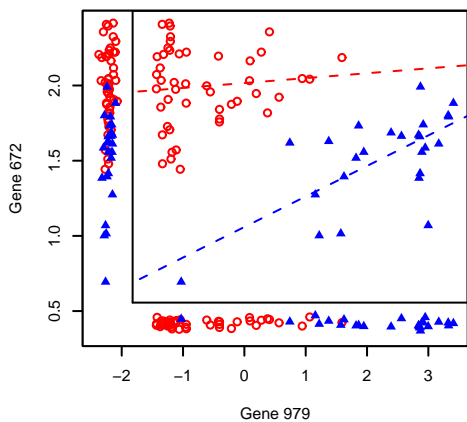
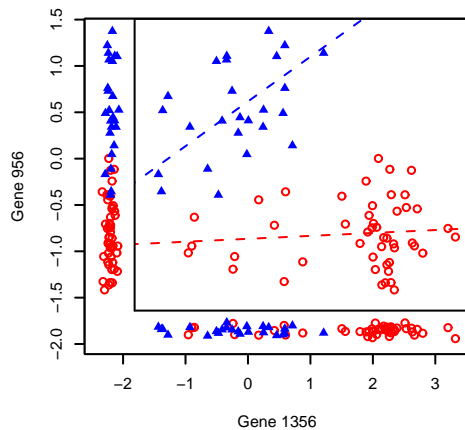


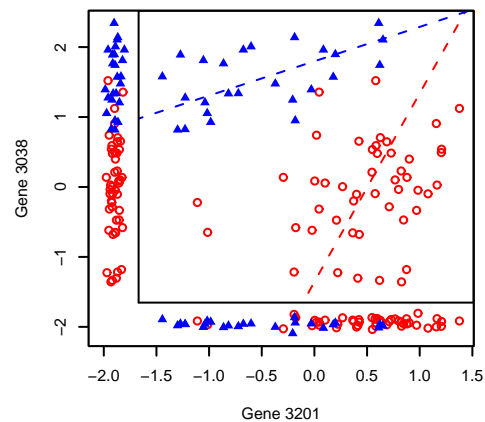
Gene Pair 1 , Score = 1.36



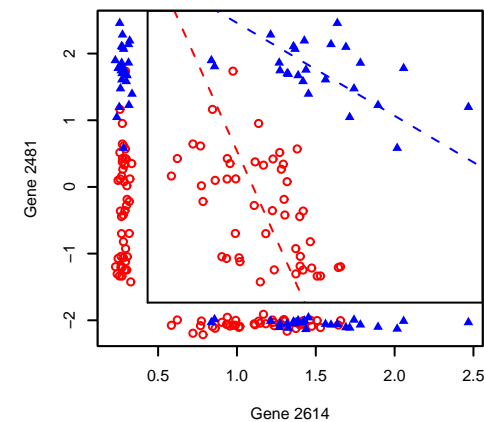
Gene Pair 2 , Score = 1.32



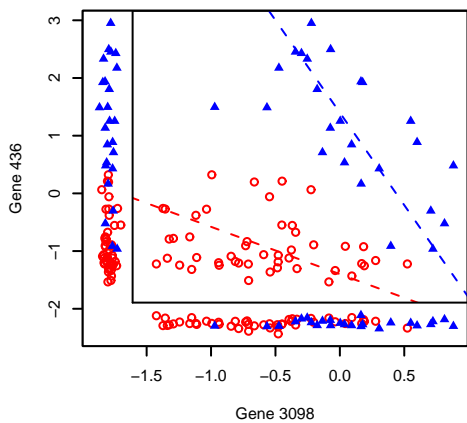
Gene Pair 3 , Score = 1.3



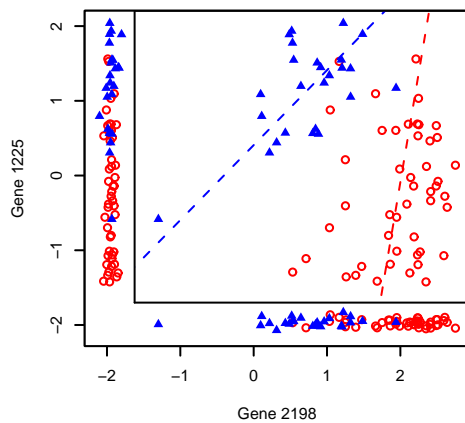
Gene Pair 4 , Score = 1.26



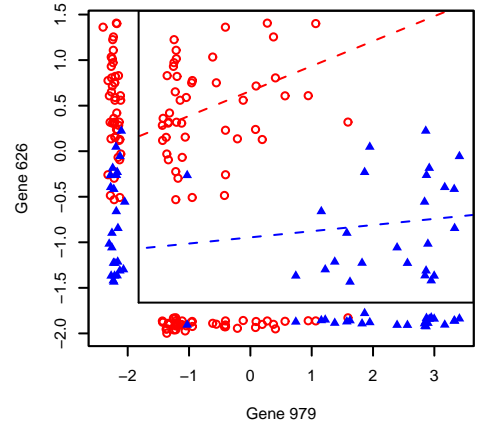
Gene Pair 5 , Score = 1.25



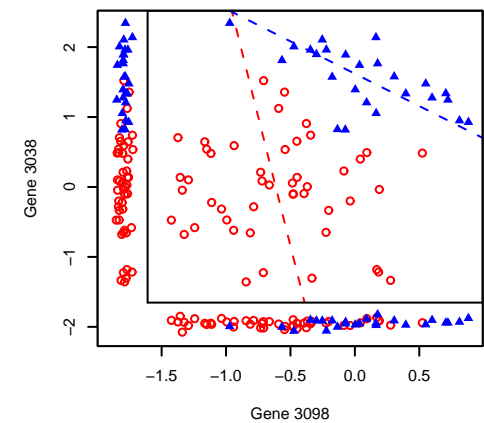
Gene Pair 6 , Score = 1.25



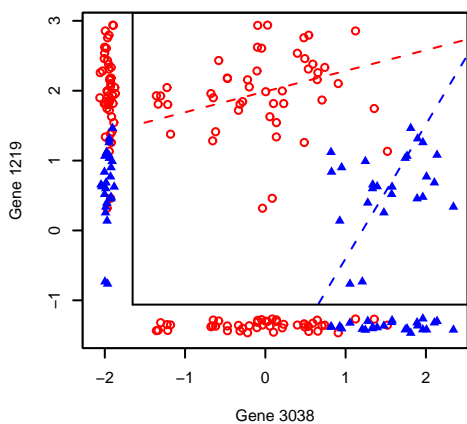
Gene Pair 7 , Score = 1.22



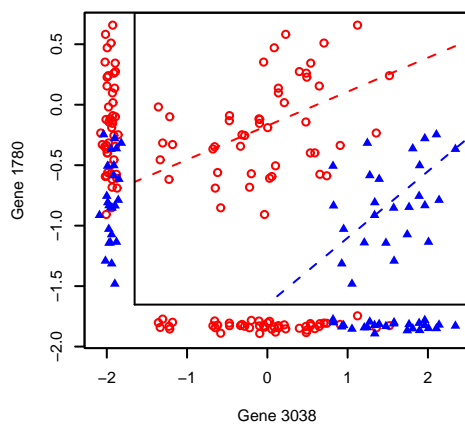
Gene Pair 8 , Score = 1.21



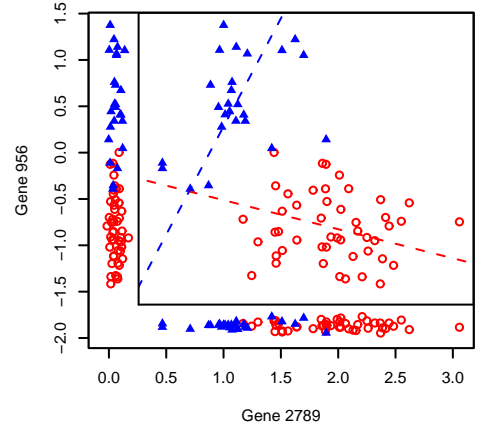
Gene Pair 9 , Score = 1.2



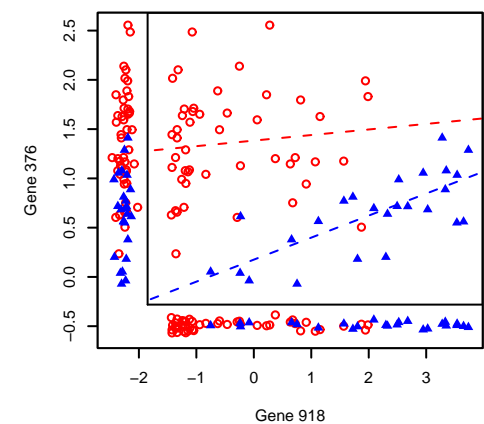
Gene Pair 10 , Score = 1.2



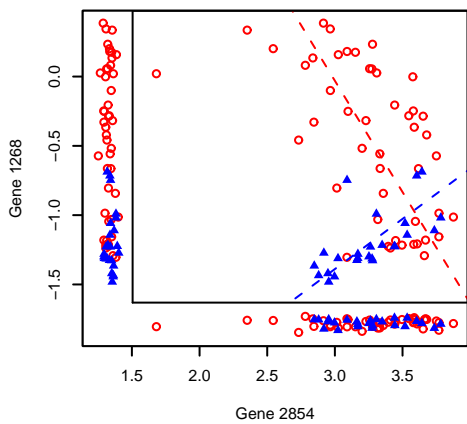
Gene Pair 11 , Score = 1.2



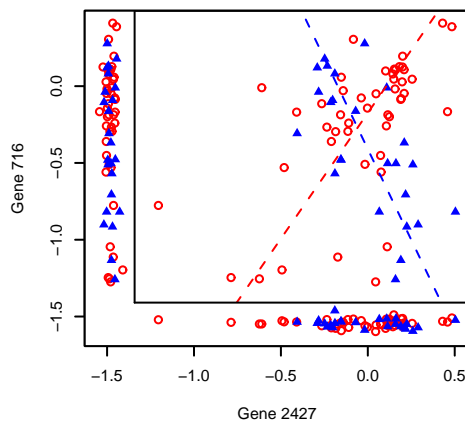
Gene Pair 12 , Score = 1.19



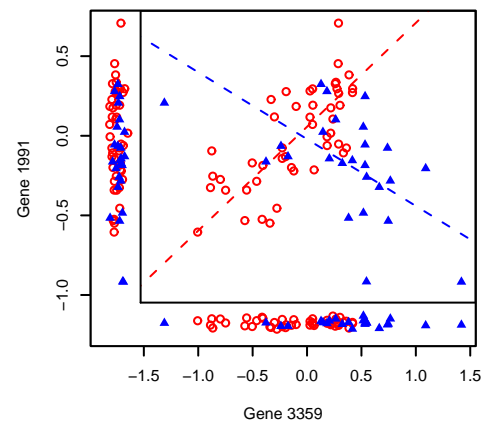
Gene Pair 1 , Score = 1.36



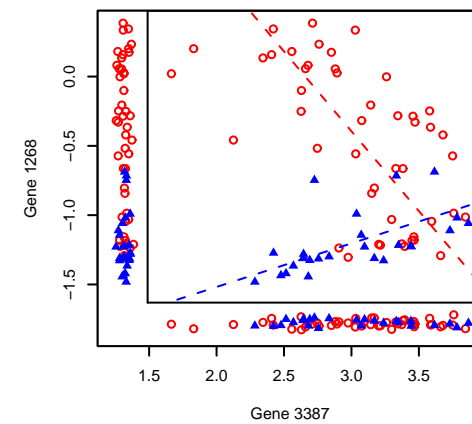
Gene Pair 2 , Score = 1.35



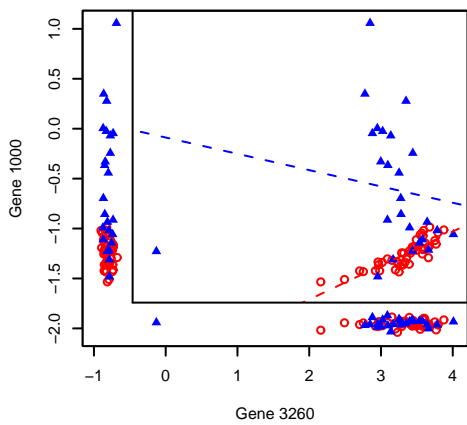
Gene Pair 3 , Score = 1.33



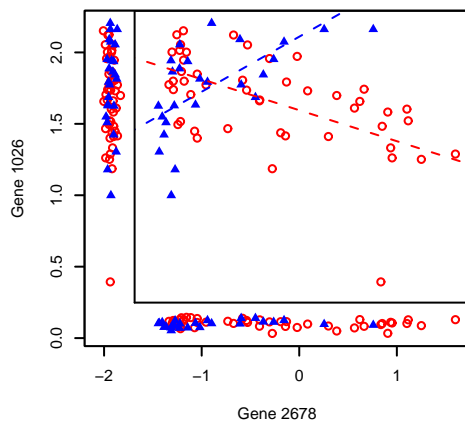
Gene Pair 4 , Score = 1.31



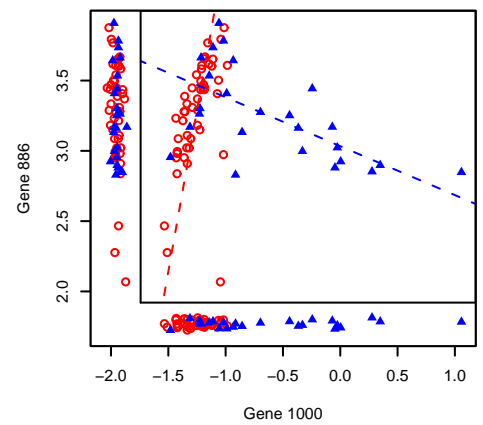
Gene Pair 5 , Score = 1.28



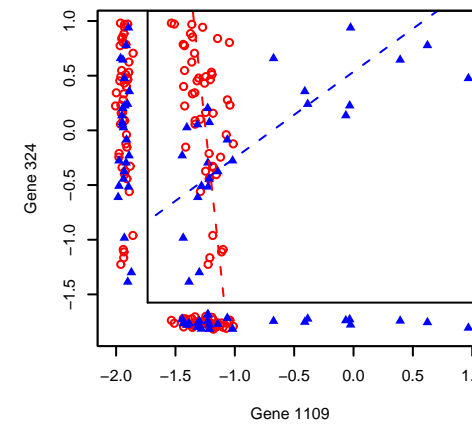
Gene Pair 6 , Score = 1.28



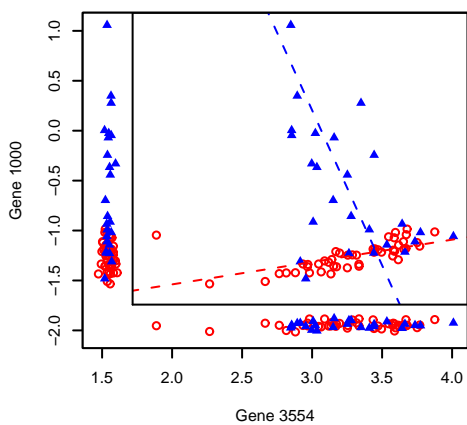
Gene Pair 7 , Score = 1.26



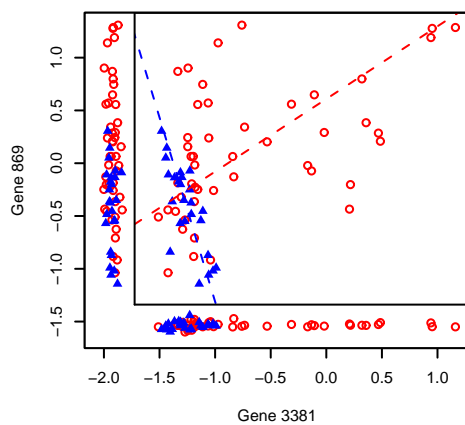
Gene Pair 8 , Score = 1.25



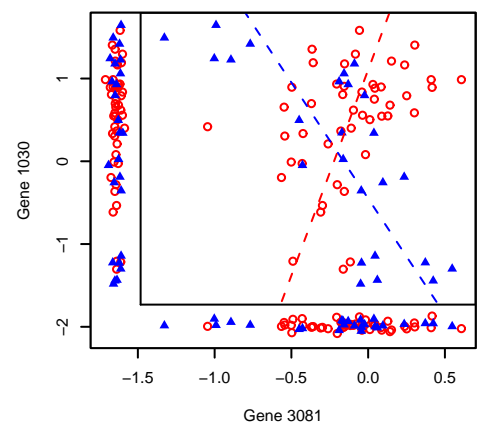
Gene Pair 9 , Score = 1.25



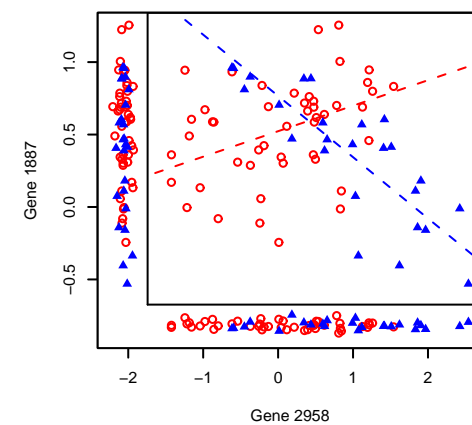
Gene Pair 10 , Score = 1.24



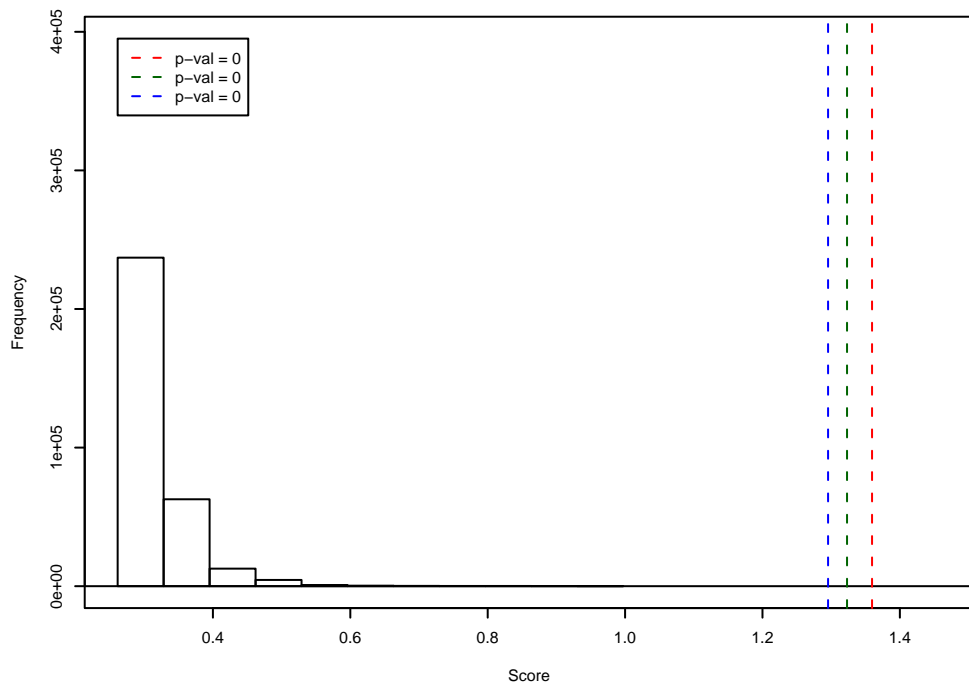
Gene Pair 11 , Score = 1.24



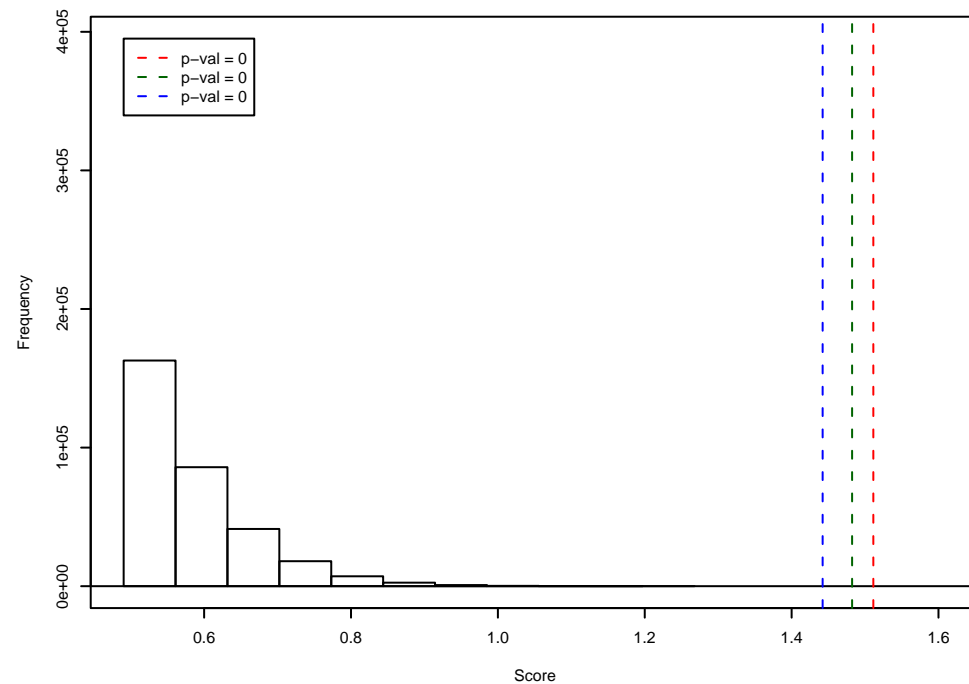
Gene Pair 12 , Score = 1.24



Gap/Substitution



On/Off



p-value	# gp exceeding	% gp exceeding	fold advantage
0e+00	194	0.003	Inf
1e-06	395	0.006	61.97
1e-05	1077	0.017	16.90
1e-04	14370	0.225	22.54
1e-03	106948	1.678	16.78

p-value	# gp exceeding	% gp exceeding	fold advantage
0e+00	136	0.002	Inf
1e-06	476	0.007	74.68
1e-05	1566	0.025	24.57
1e-04	6342	0.099	9.95
1e-03	30017	0.471	4.71