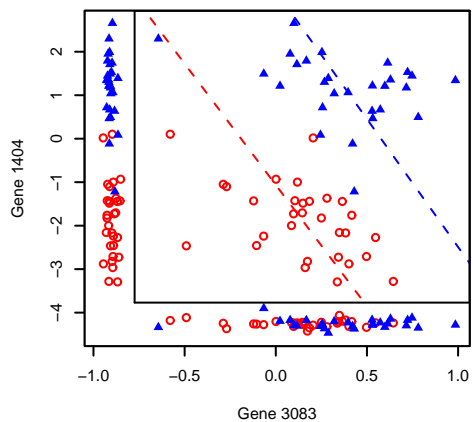
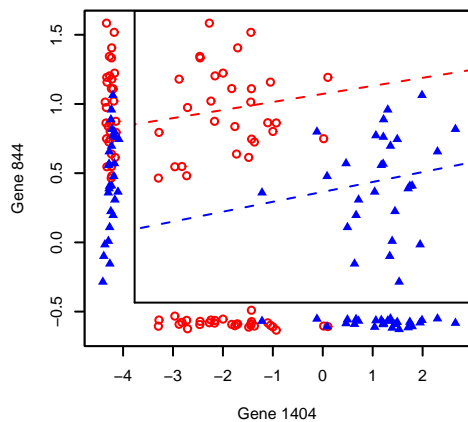


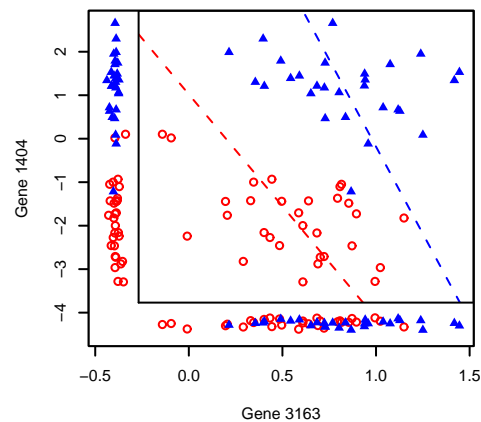
Gene Pair 1 , Score = 1.04



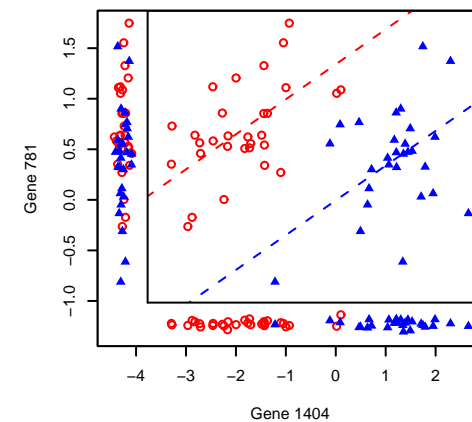
Gene Pair 2 , Score = 1.01



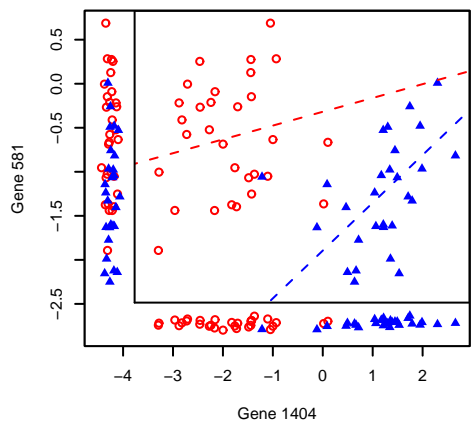
Gene Pair 3 , Score = 1



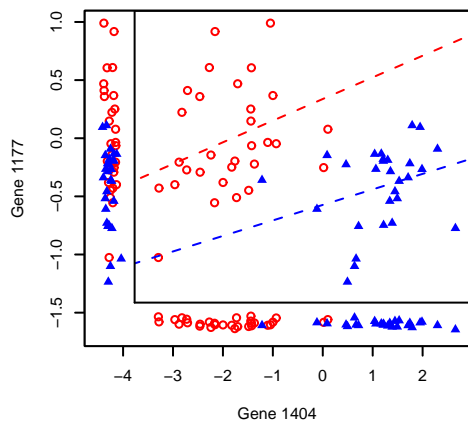
Gene Pair 4 , Score = 0.98



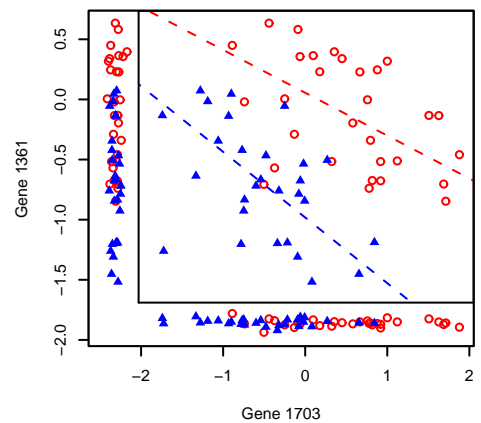
Gene Pair 5 , Score = 0.97



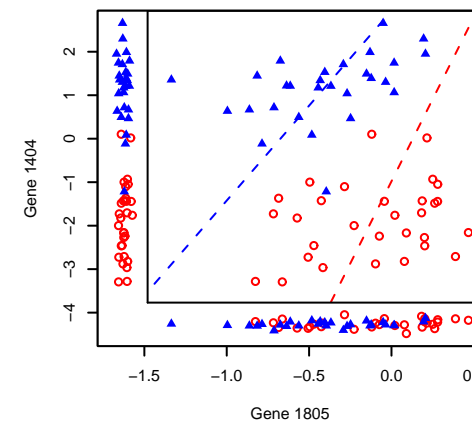
Gene Pair 6 , Score = 0.95



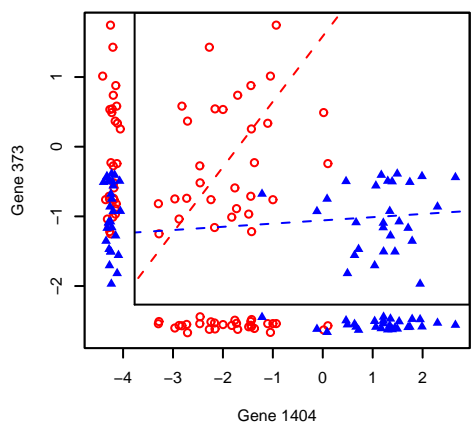
Gene Pair 7 , Score = 0.93



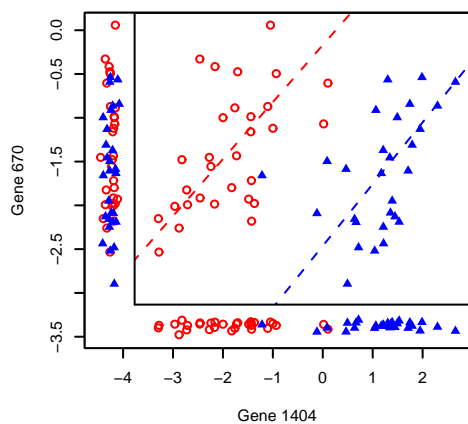
Gene Pair 8 , Score = 0.92



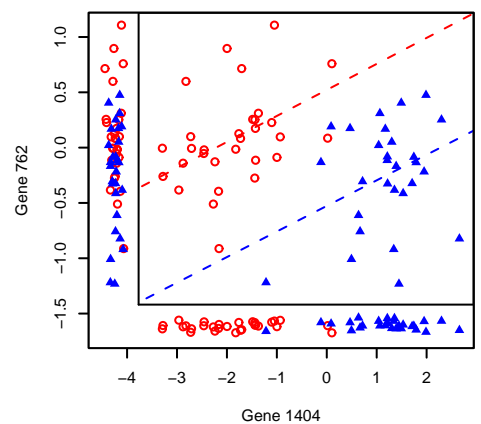
Gene Pair 9 , Score = 0.92



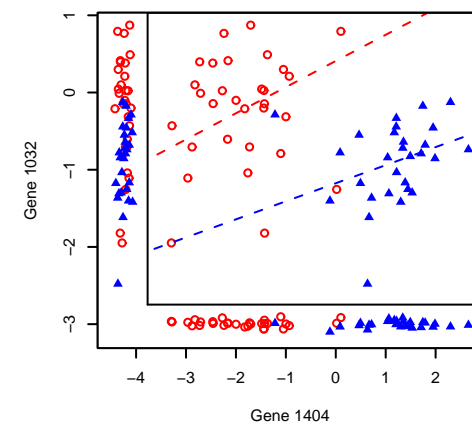
Gene Pair 10 , Score = 0.91



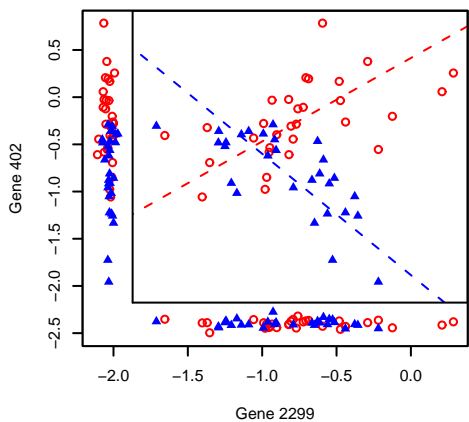
Gene Pair 11 , Score = 0.9



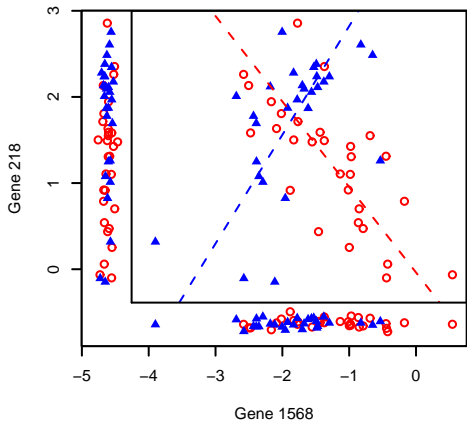
Gene Pair 12 , Score = 0.89



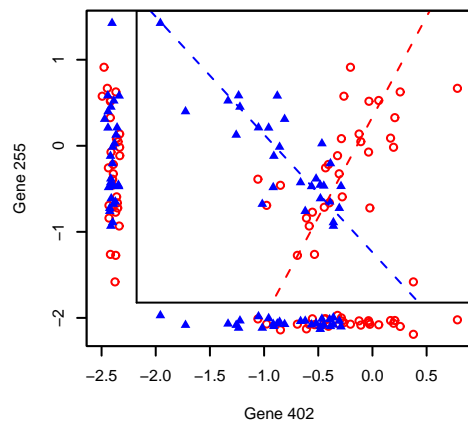
Gene Pair 1 , Score = 1.37



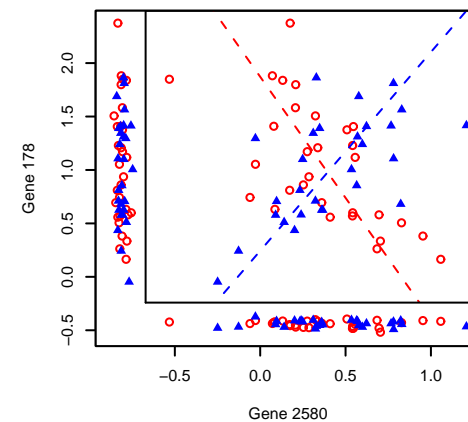
Gene Pair 2 , Score = 1.34



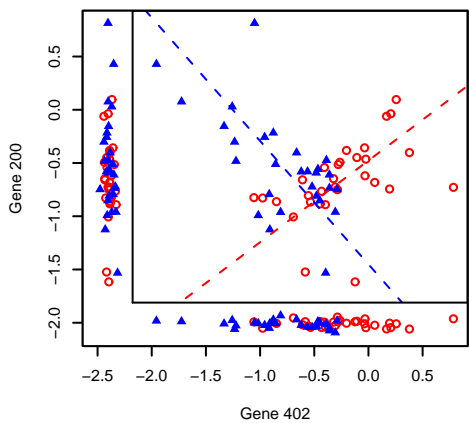
Gene Pair 3 , Score = 1.32



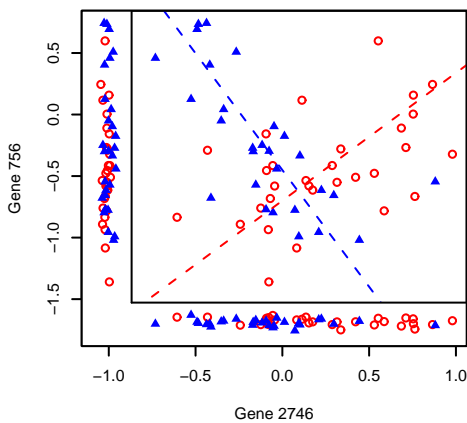
Gene Pair 4 , Score = 1.29



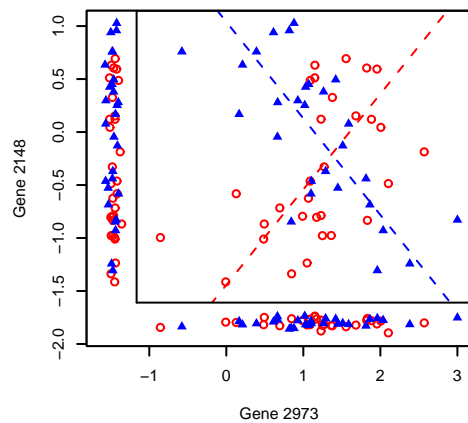
Gene Pair 5 , Score = 1.26



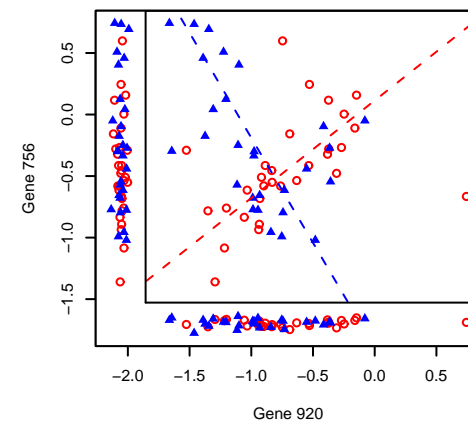
Gene Pair 6 , Score = 1.25



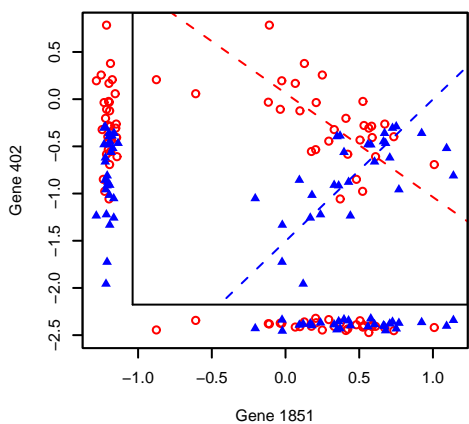
Gene Pair 7 , Score = 1.25



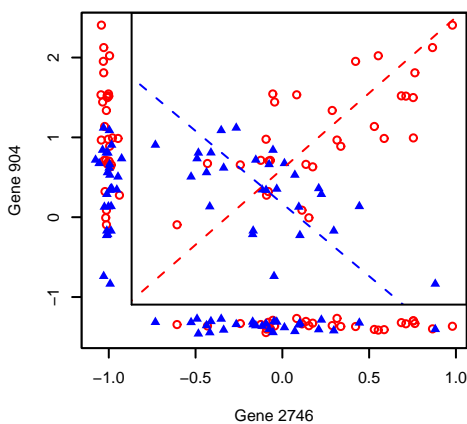
Gene Pair 8 , Score = 1.25



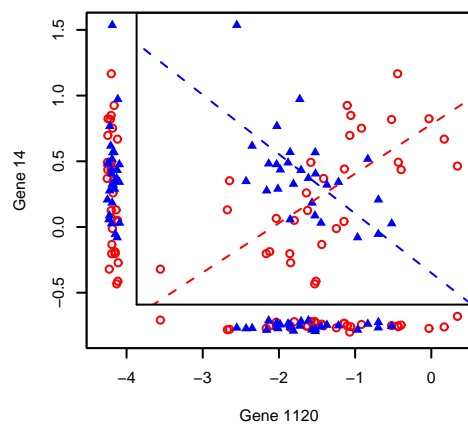
Gene Pair 9 , Score = 1.25



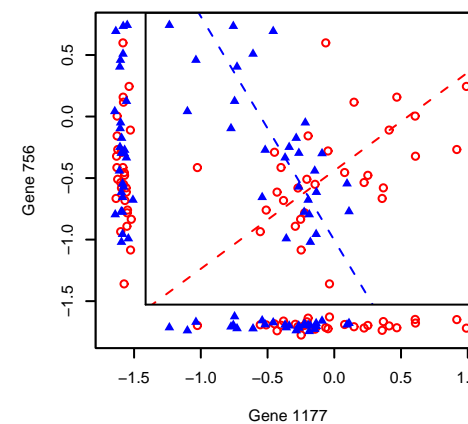
Gene Pair 10 , Score = 1.25



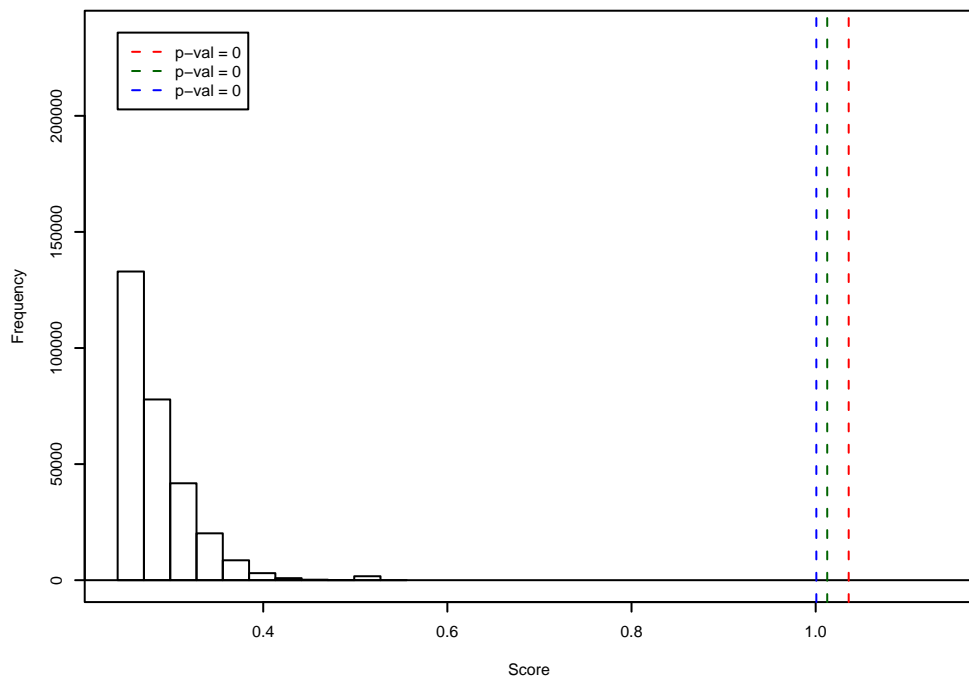
Gene Pair 11 , Score = 1.24



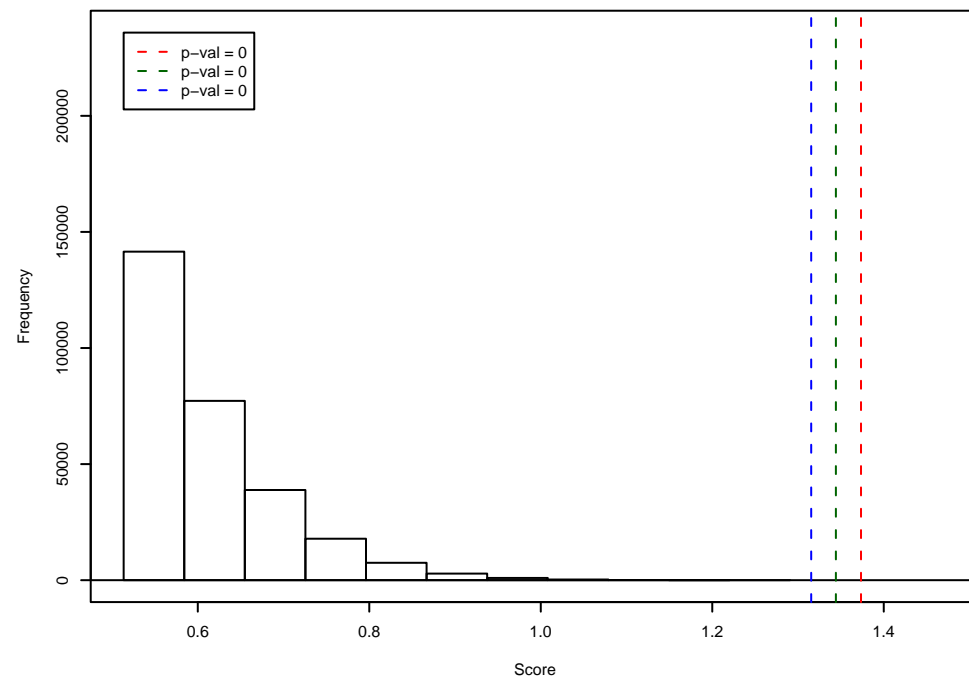
Gene Pair 12 , Score = 1.23



Gap/Substitution



On/Off



p-value	# gp exceeding	% gp exceeding	fold advantage
0e+00	3107	0.054	Inf
1e-06	5841	0.102	1017.42
1e-05	7191	0.125	125.26
1e-04	7293	0.127	12.70
1e-03	49557	0.863	8.63

p-value	# gp exceeding	% gp exceeding	fold advantage
0e+00	4	0.000	Inf
1e-06	21	0.000	3.66
1e-05	161	0.003	2.80
1e-04	1219	0.021	2.12
1e-03	9041	0.157	1.57