

XI177 cells

HeLa cells

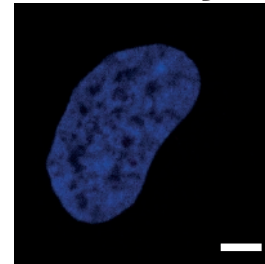
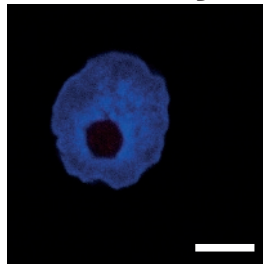
Nup155

overlay

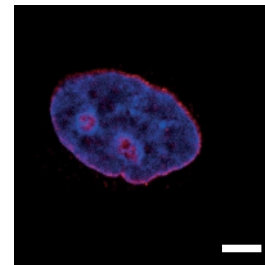
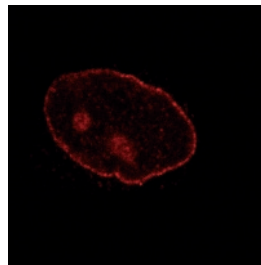
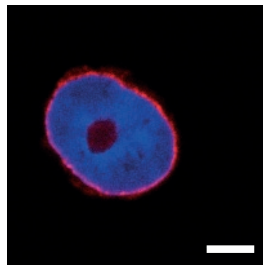
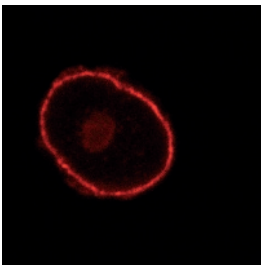
Nup155

overlay

pi α Nup155



α Nup155



Supplementary Figure 1

Immunofluorescence of Nup155 on *Xenopus* XI177 and human HeLa cells.

Cells were pre-extracted with 0.1% Triton X-100 before fixation in paraformaldehyde. Immunofluorescence was performed with Nup155 pre-immune serum (top row) and anti-Nup155 serum (bottom row). In the overlaid image chromatin was stained with DAPI (blue). Bar, 5 μ m.