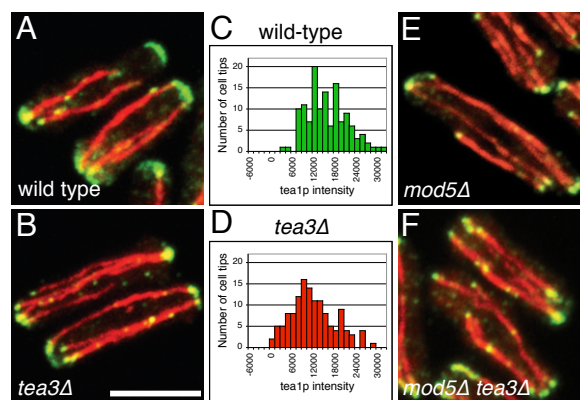


Snaith, Samejima and Sawin, 2005: Supplementary Figure 4



Supplementary Figure 4: Tea1p levels at cell tips are altered in *tea3Δ* mutants
Localization of tea1p (green) and microtubules (red) in (A) wild-type, (B) *tea3Δ*, (E) *mod5Δ* and (F) *tea3Δ mod5Δ* cells. Fluorescence quantitation of anti-tea1p immunofluorescence was performed using NIH Image 1.62 software after acquisition of Z-series containing the entire cell volume. (C) wild-type and (D) *tea3Δ* cells, n = 130. Median levels of tea1p in each strain are shown by a dotted line. The scale bar represents 5 μm.