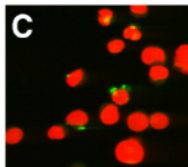
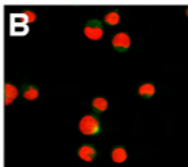
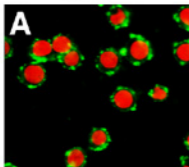


FITC-sc10,986 DNA electroporated to COLO 320DM cells

0 hr

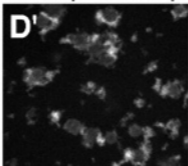
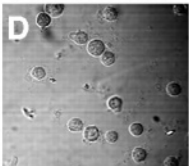
4 hr

48 hr



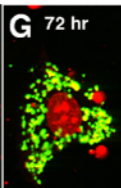
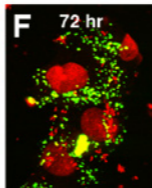
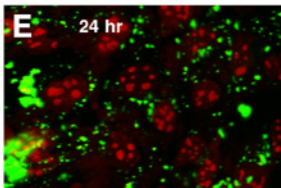
Phase Contrast

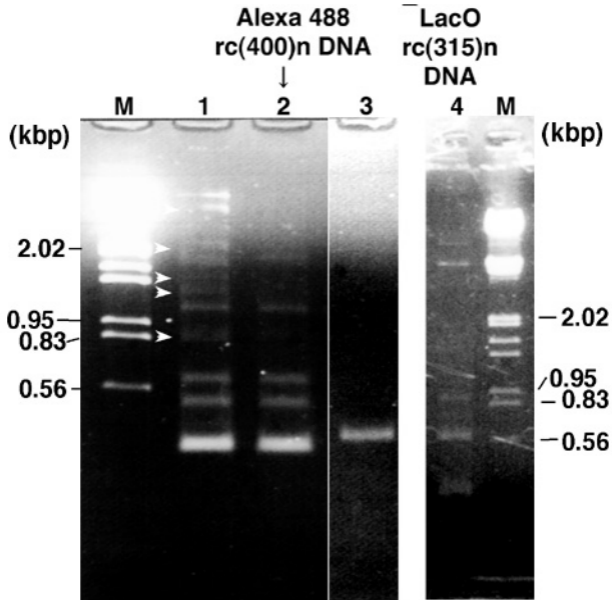
FITC-pGeneGrip



FITC-sc5,063 DNA
electroporated to
COLO 320DM cells

FITC-sc3,162 DNA lipofected to MEF p53^{-/-} cells





(MEF p53+/+)

3 min

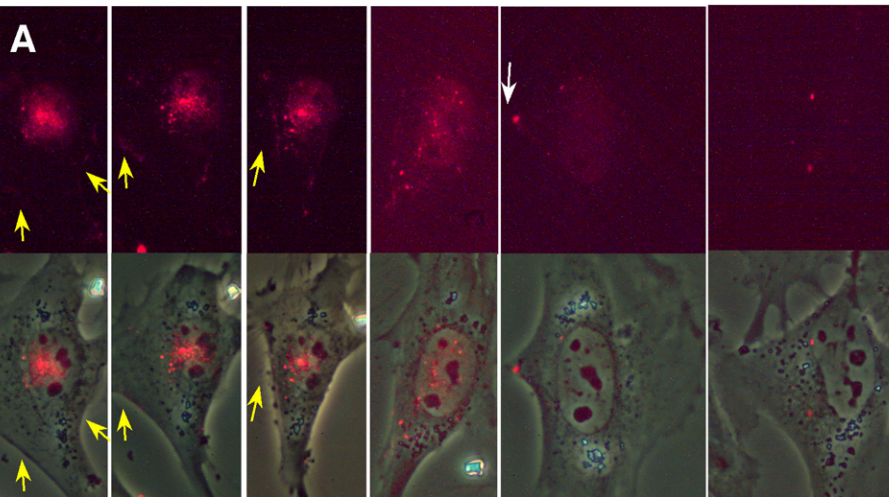
1 hr

2 hr

7 hr

20 hr

44 hr



(HeLa

LacR-GFP)

5 min

3 hr

7 hr

12 hr

20 hr

