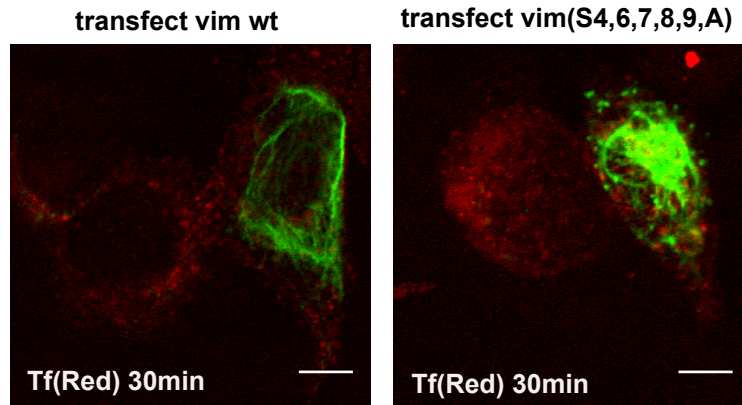
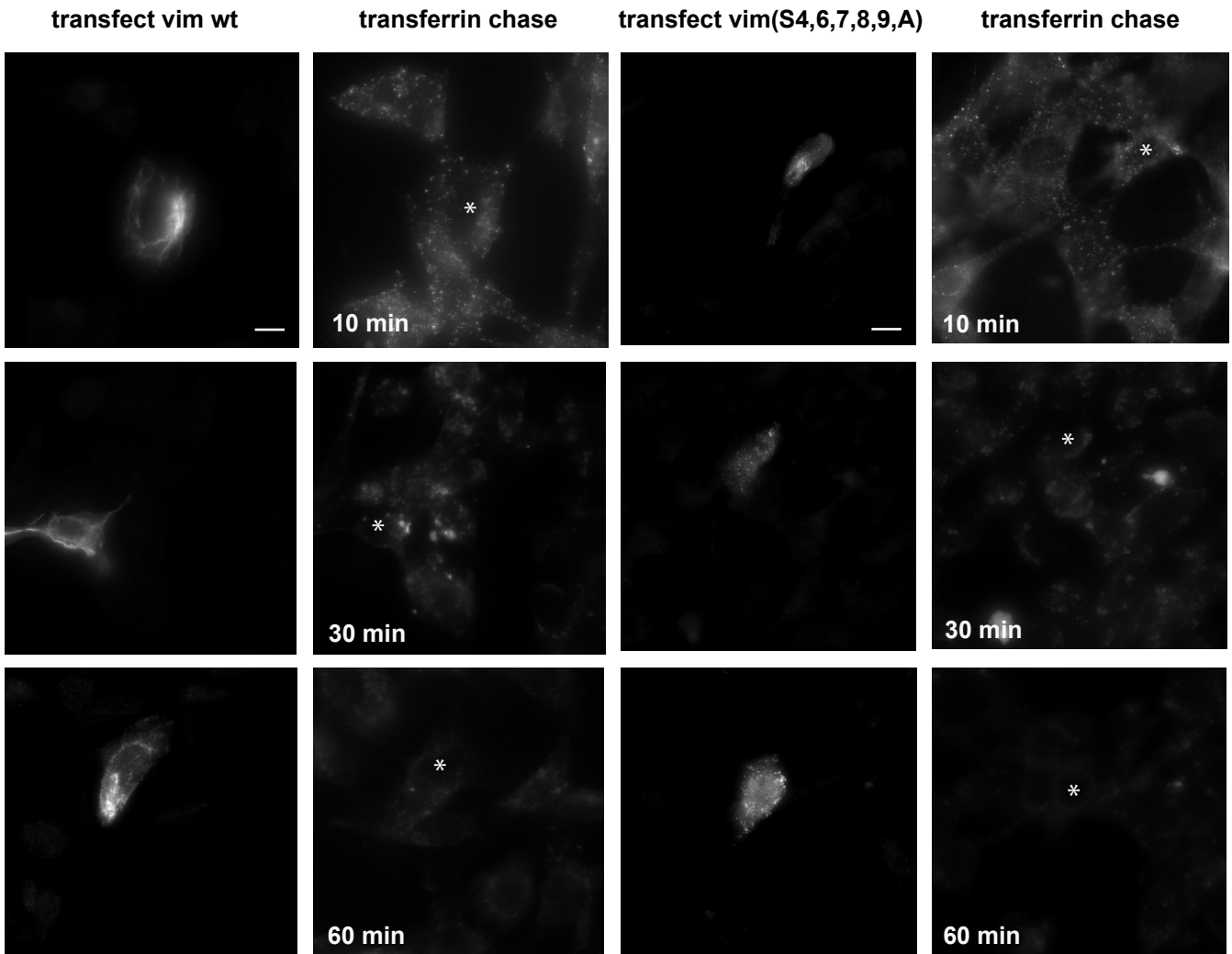


A**B**

Supplementary figure S3. PKC ϵ RE cells were transiently transfected with wild-type human vimentin or vimentin(S4,6,7,8,9A). 48 hours post-transfection (**A**) the cells were allowed to internalise Alexa555-conjugated transferrin for 30min. Bar 10 μ m. (**B**) Conjugated transferrin was bound to the cell surface for 30min at +4 $^{\circ}$ C followed by a chase at +37 $^{\circ}$ C for the indicated times in the presence of excess unlabelled transferrin. * vimentin transfected cell. Bar 20 μ m. (**A, B**) Ectopically expressed human vimentin was detected with antibody followed with Alexa488-conjugated secondary antibody to identify transfected cells.