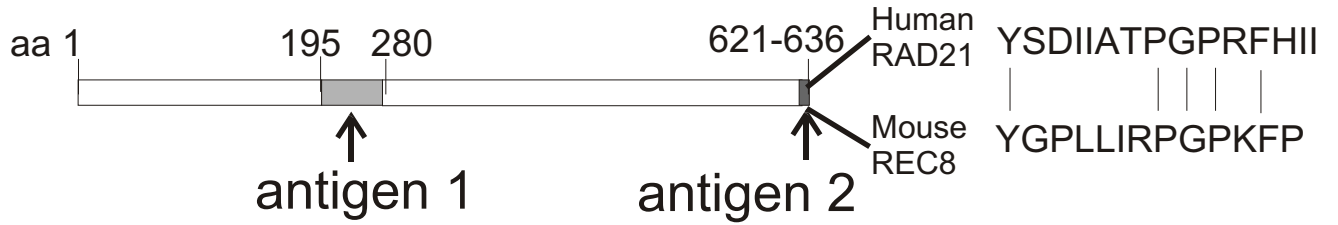
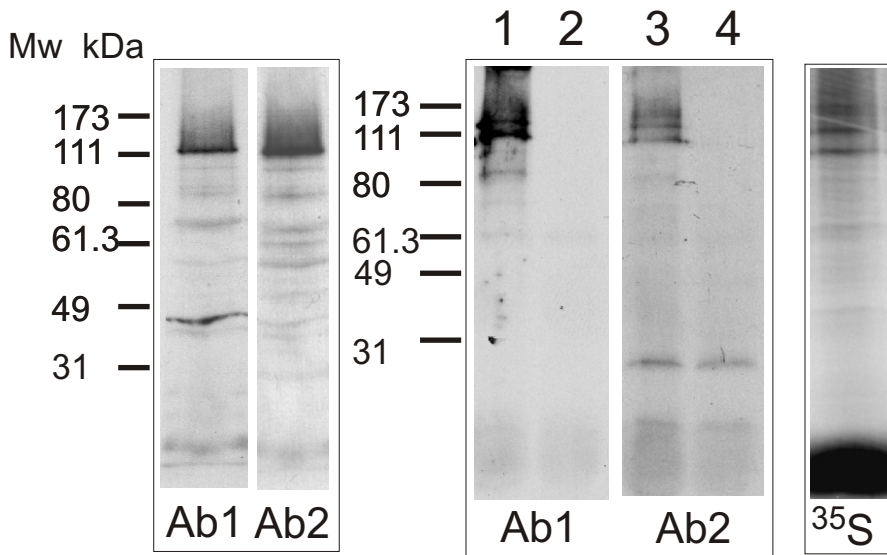


# Supplementary Figure 1

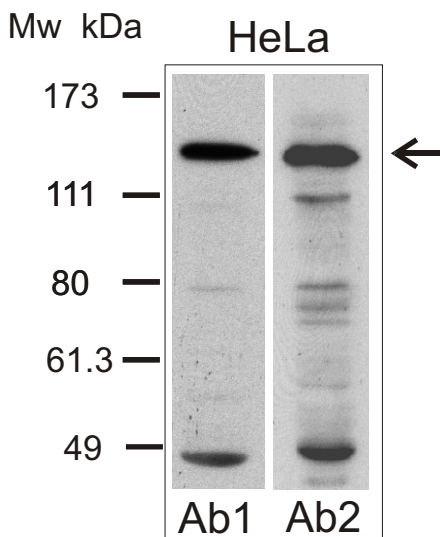
## A



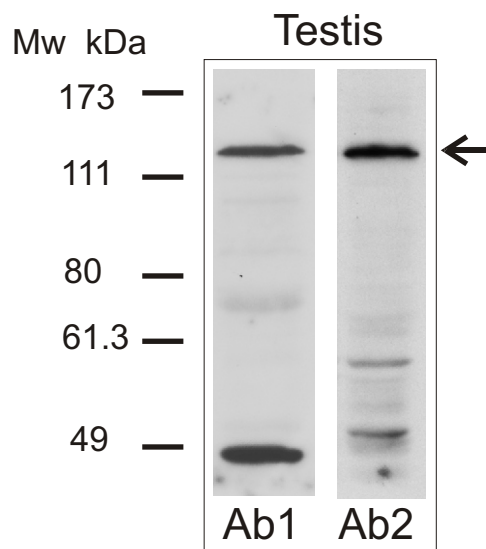
## B



## C



## D



**Supplementary Fig. 1** | Western blot analyses of the specificity of RAD21/SCC1 antibodies. **(A)** Schematic representation of two regions used for preparation of RAD21/SCC1 antigens. Alignment between human RAD21 and mouse REC8 sequences corresponding to antigen 2 is displayed and identical amino acids are indicated. **(B)** Western blots of *in vitro* translated human RAD21/SCC1 from two independent experiments (left and middle panels) probed with RAD21 Ab1 and RAD21 Ab2. Vector DNA (lanes 2 and 4) was included as a negative control for *in vitro* translated RAD21/SCC1 (lanes 1 and 3) in the middle panel. Right panel shows the synthesis of RAD21/SCC1 protein in the presence of <sup>35</sup>S-Methionine in a parallel reaction. **(C)** Western blots of total extracts of HeLa cells probed with RAD21 Ab1 (left blot) and RAD21 Ab2 (right blot). **(D)** Western blots of mouse testicular extracts probed with RAD21 Ab1 (left blot) and RAD21 Ab2 (right blot). Molecular weights of protein standards (kDa) are shown. Arrows indicate the position of RAD21/SCC1. aa, amino acid.