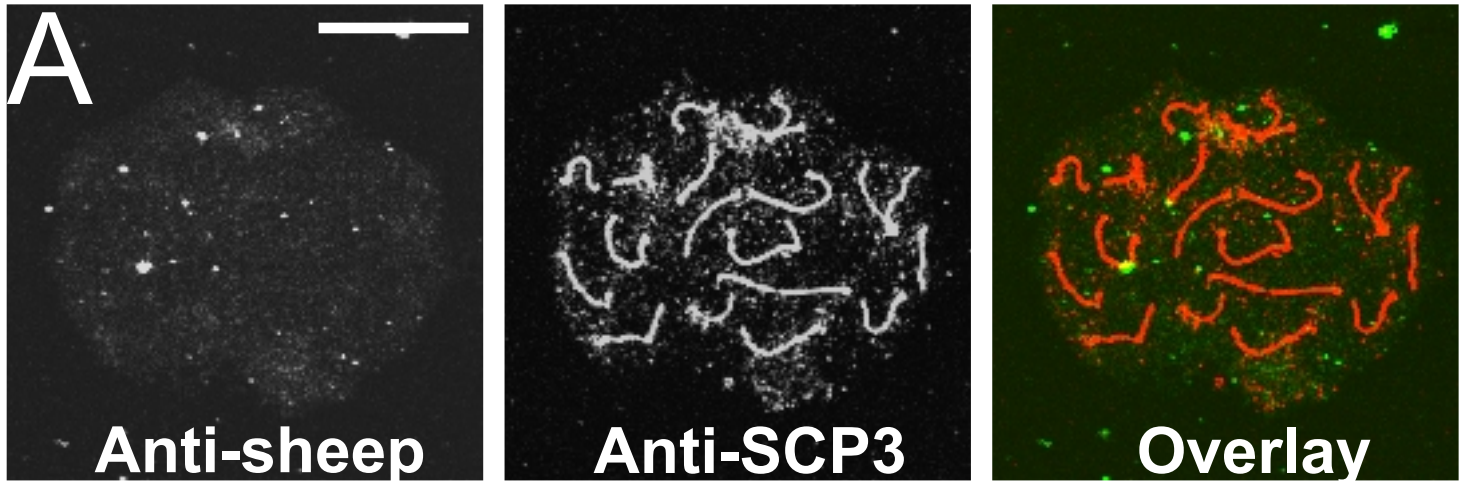
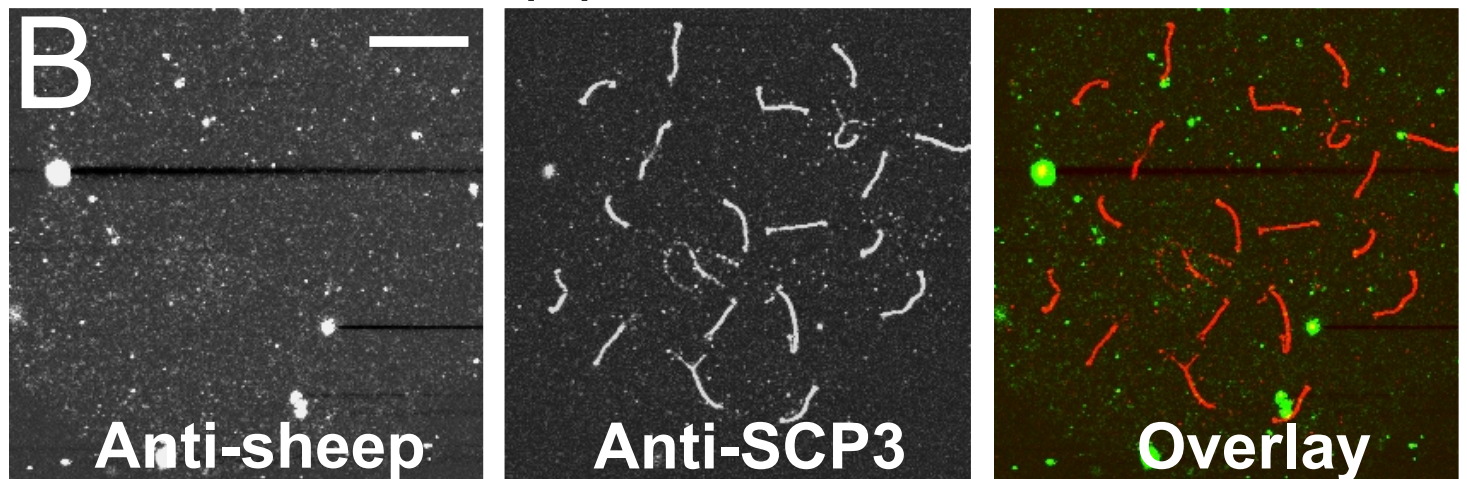


Supplementary Figure 10

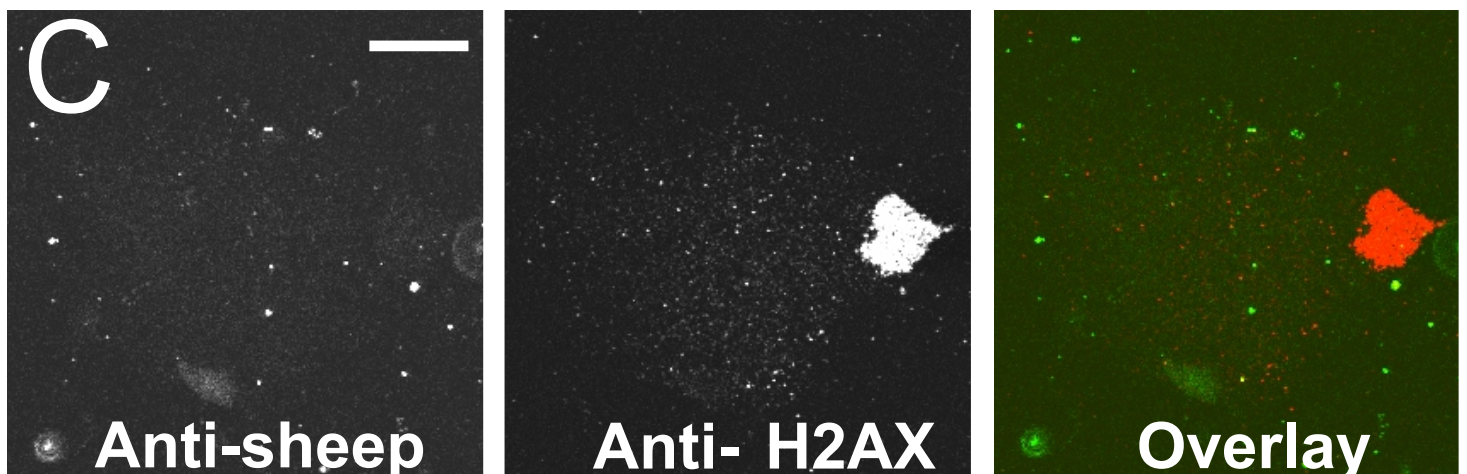
Omitting sheep primary antibody



Sheep pre-immune serum



Rabbit anti- H2AX



Supplementary Fig. 10 | Controls for co-immunolabelling of spermatocyte chromosome spreads. Spreads were stained using (A) a rabbit polyclonal antibody to SCP3 but omitting anti-sheep primary antibody, (B) a rabbit polyclonal antibody to SCP3 and pre-immune sheep serum or (C) a rabbit polyclonal antibody to γ H2AX, which stains strongly the XY chromosomes in pachytene spermatocytes. In overlay images, anti-sheep is represented in green, anti-rabbit in red and co-localization in yellow. No cross-reactivity on chromosome cores was observed in any case. Bar = 10 μ m.