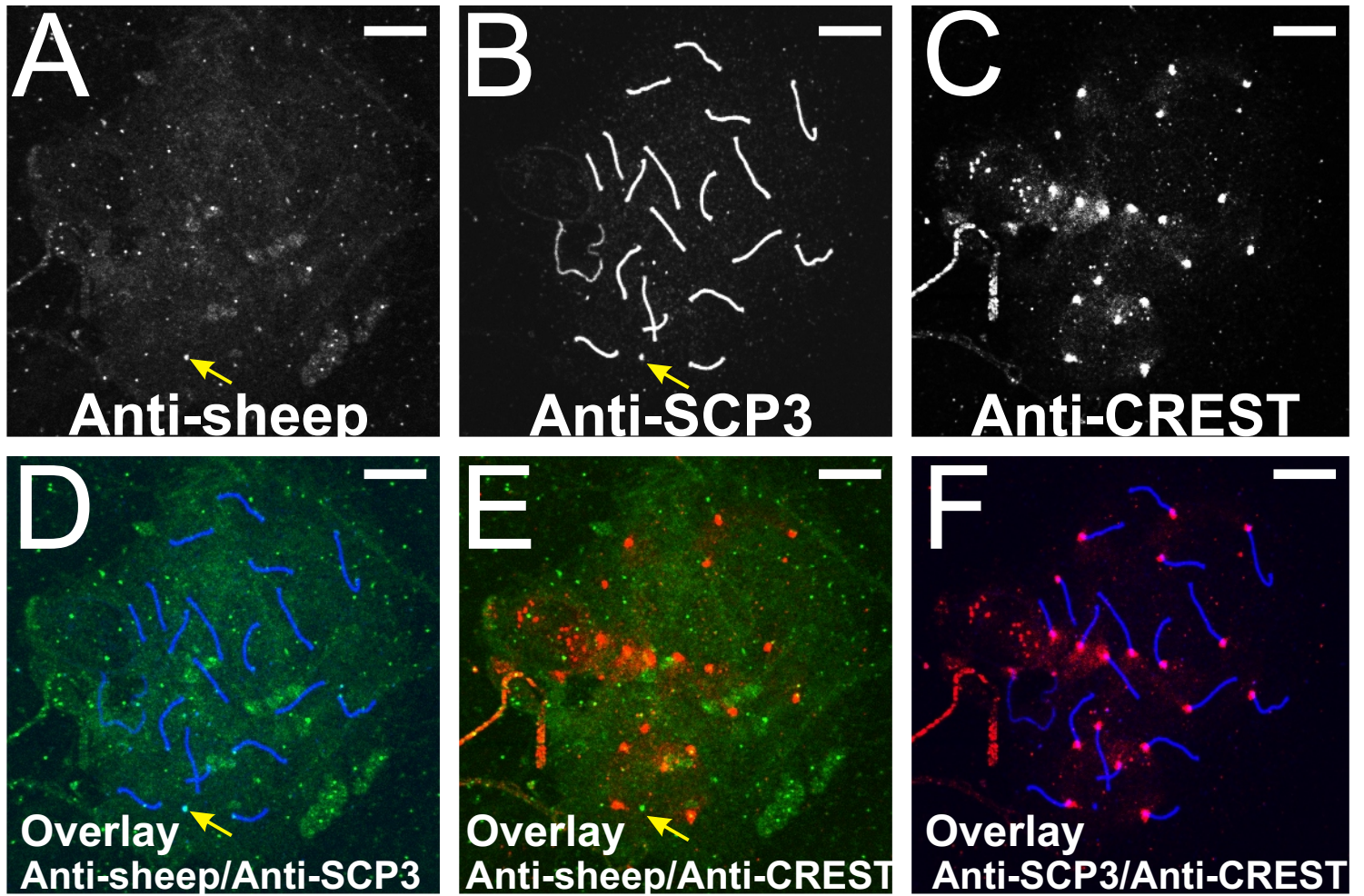


Supplementary Figure 11



Supplementary Fig. 11 | Controls for triple-labelling of spermatocyte chromosome spreads. Spreads were co-immunostained with a rabbit polyclonal antibody to SCP3 and human CREST-6 sera but no anti-sheep primary antibody. Signal detected by each secondary antibody was shown in black and white as follows: **(A)** anti-sheep; **(B)** anti-rabbit; **(C)** anti-human IgG. In overlay images **(D–F)**, anti-sheep is represented in green, anti-rabbit in purple and anti-human IgG in red. Arrow points to a background spot. Bar = 10 μm .