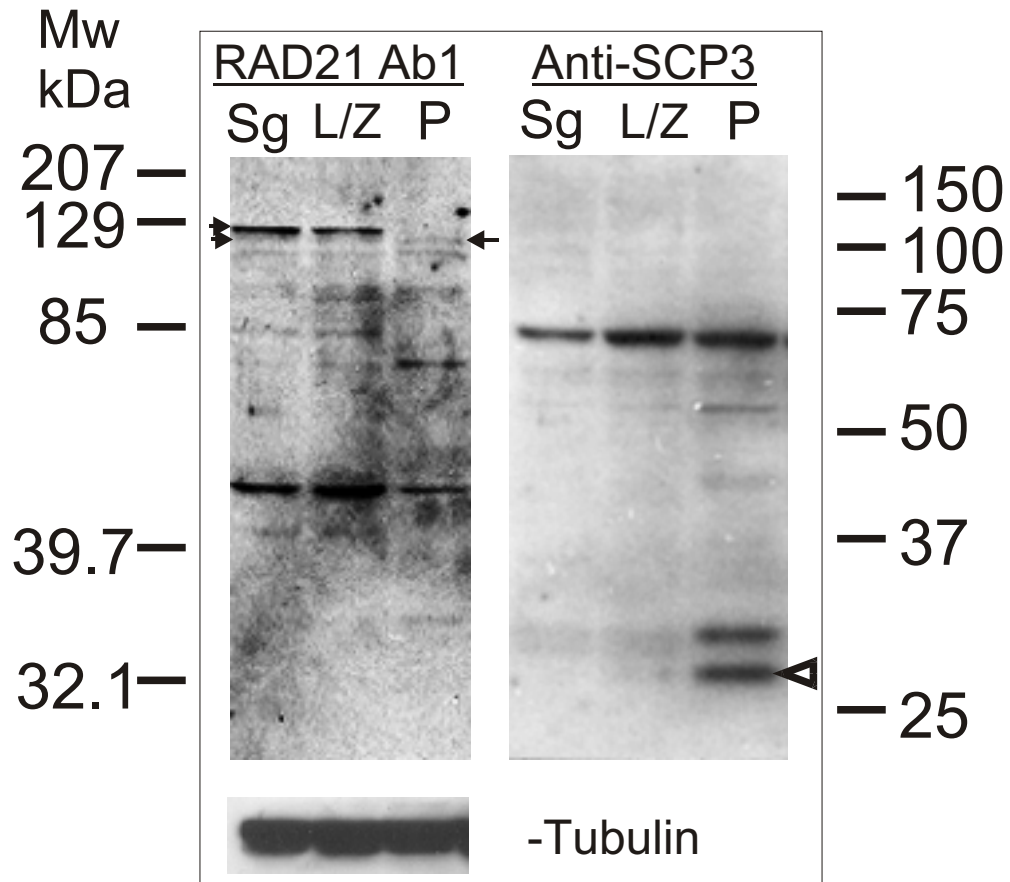
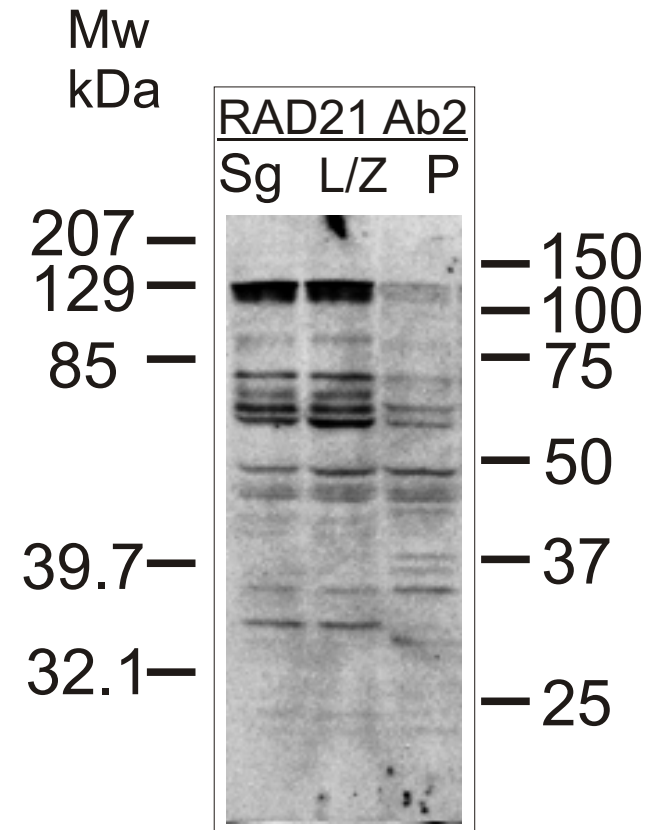


# Supplementary Figure 5

## A



## B



**Supplementary Fig. 5** | Western blots of testicular cells. Testicular cells were enriched for spermatogonia (Sg), leptotene/zygotene (L/Z) and pachytene (P) spermatocytes. Parallel blots were probed with RAD21 Ab1 (**A**) and Ab2 (**B**). Arrowheads indicate the positions of RAD21/SCC1 bands. Arrow indicates a fast migrating band detected by Ab1 in pachytene spermatocytes. Anti-SCP3 antibody was used to verify the enrichment of pachytene spermatocytes. Open arrowhead indicates the position of SCP3.