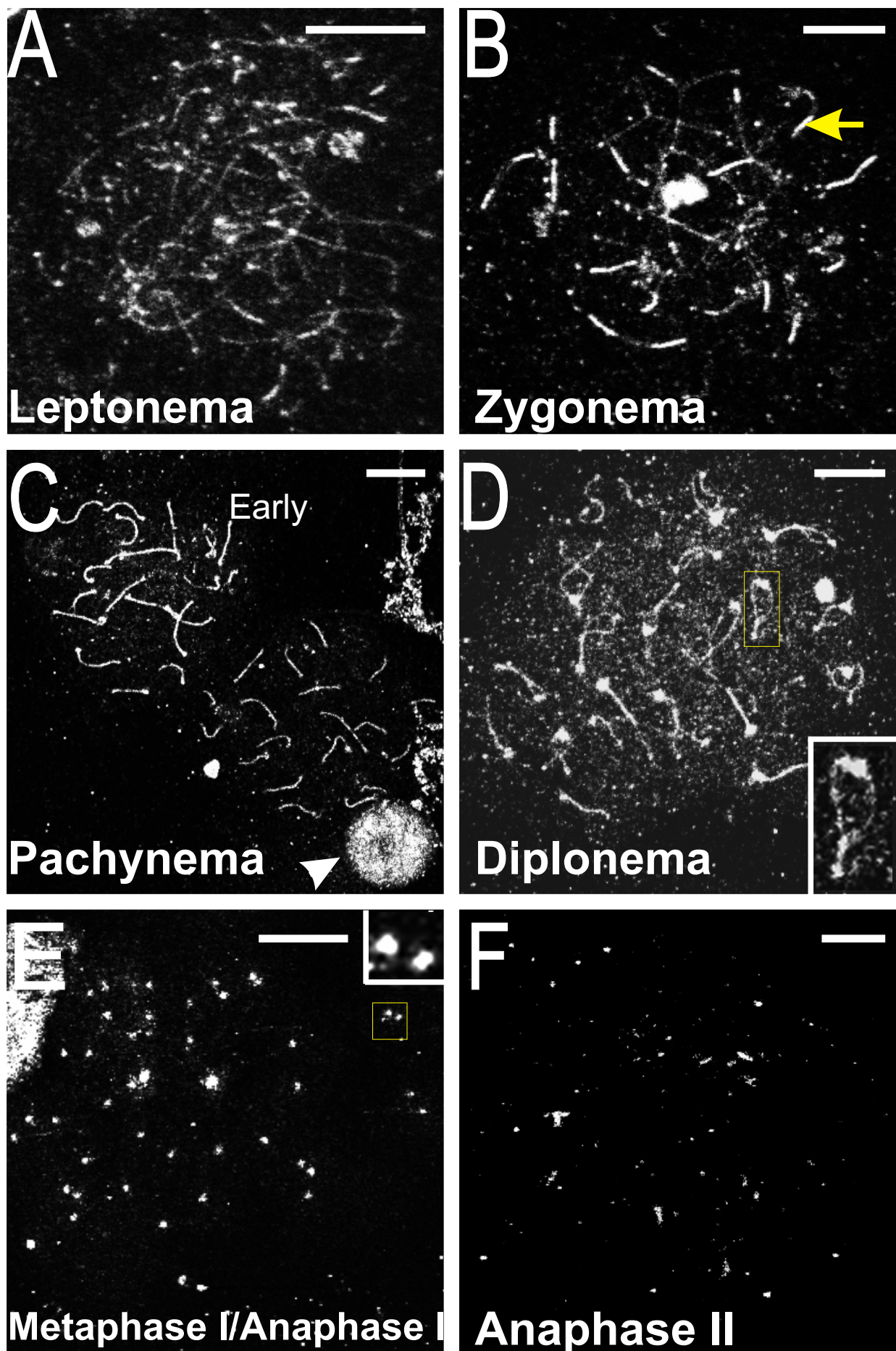


Supplementary Figure 7

RAD21 Ab1



Supplementary Fig. 7 | Single labelling of spermatocyte chromosome spreads using RAD21 Ab1. Representative cells are shown in temporal order. **(A)** leptonema. **(B)** Zygonema: note the more intensive staining in regions of synapsed chromosomes (arrow). **(C)** Pachynema, note the stronger staining in the early pachytene cells (upper left) when compared to that in an adjacent pachytene cell with more condensed chromosomes (lower right). A nucleus of much smaller size was also stained intensively (arrowhead). **(D)** Diplonema, with an enlarged view of a selected chromosome (boxed) showing the strong staining in the ends of the chromosomes. **(E)** Metaphase I/anaphase I, with an enlarged view showing the staining in the centromeres of homologous chromosomes. **(F)** Anaphase II. Note several rod-shaped structures. Bar = 10 μm .