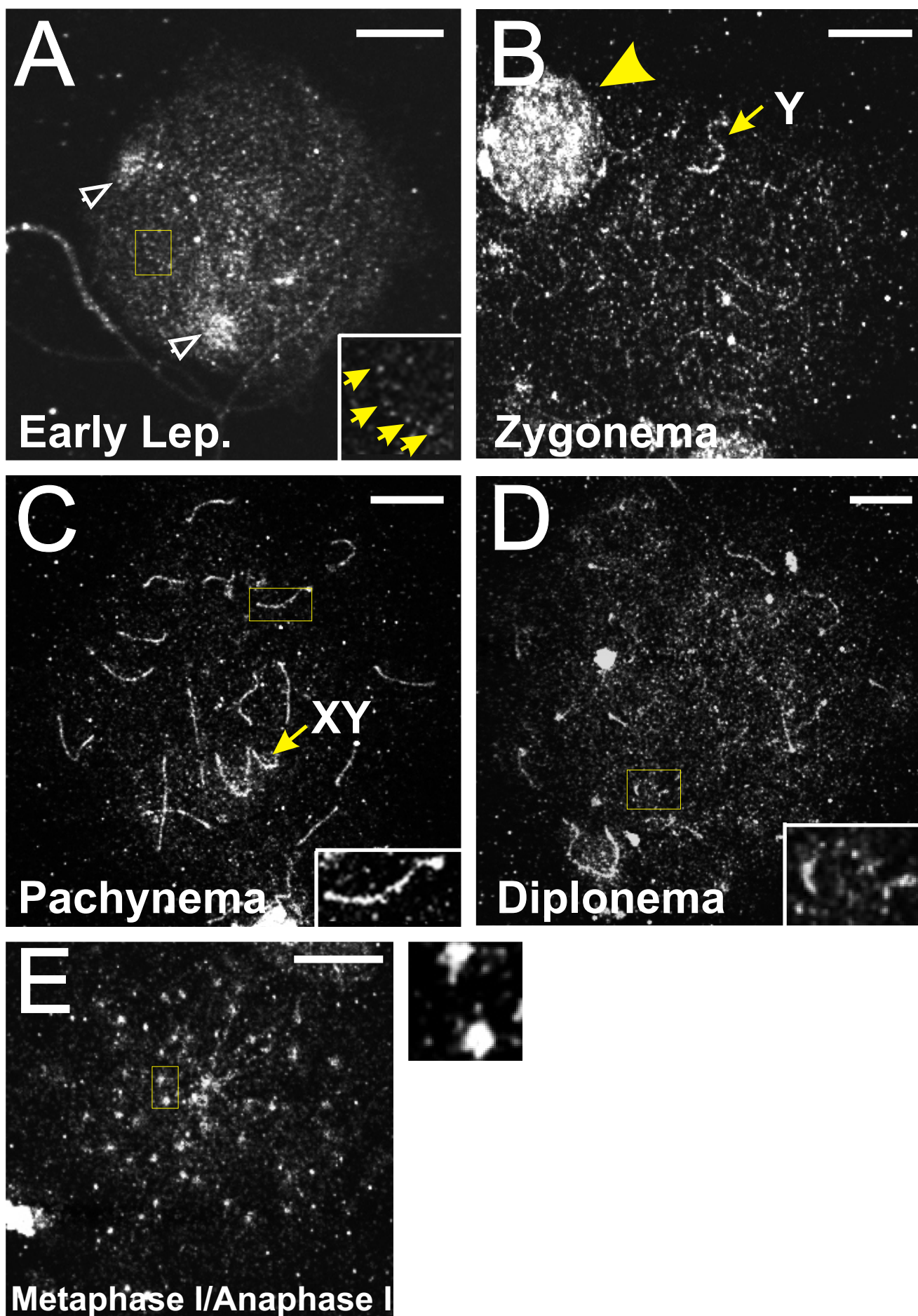


Supplementary Figure 8

RAD21 Ab2



Supplementary Fig. 8 | Single labelling of spermatocyte chromosome spreads using RAD21 Ab2. **(A)** Early leptotema. Note the typical clusters of centromeres (open arrows). Insert showing a higher magnification of boxed region. Arrows indicate a row of RAD21/SCC1 dots. **(B)** Zygonema. Arrow indicates the Y chromosome. Similar to Ab1, the antibody stained nuclei of a much smaller size than spermatocytes (arrowhead). **(C)** Pachynema. **(D)** Diplonema, with an enlarged view of the boxed chromosomes showing a stronger signal at both ends of de-synapsing homologues. **(E)** Metaphase I/anaphase I. Centromeres of homologues are in the vicinity of each other. A detailed view of selected pair is shown on the left. Bar = 10 μm .