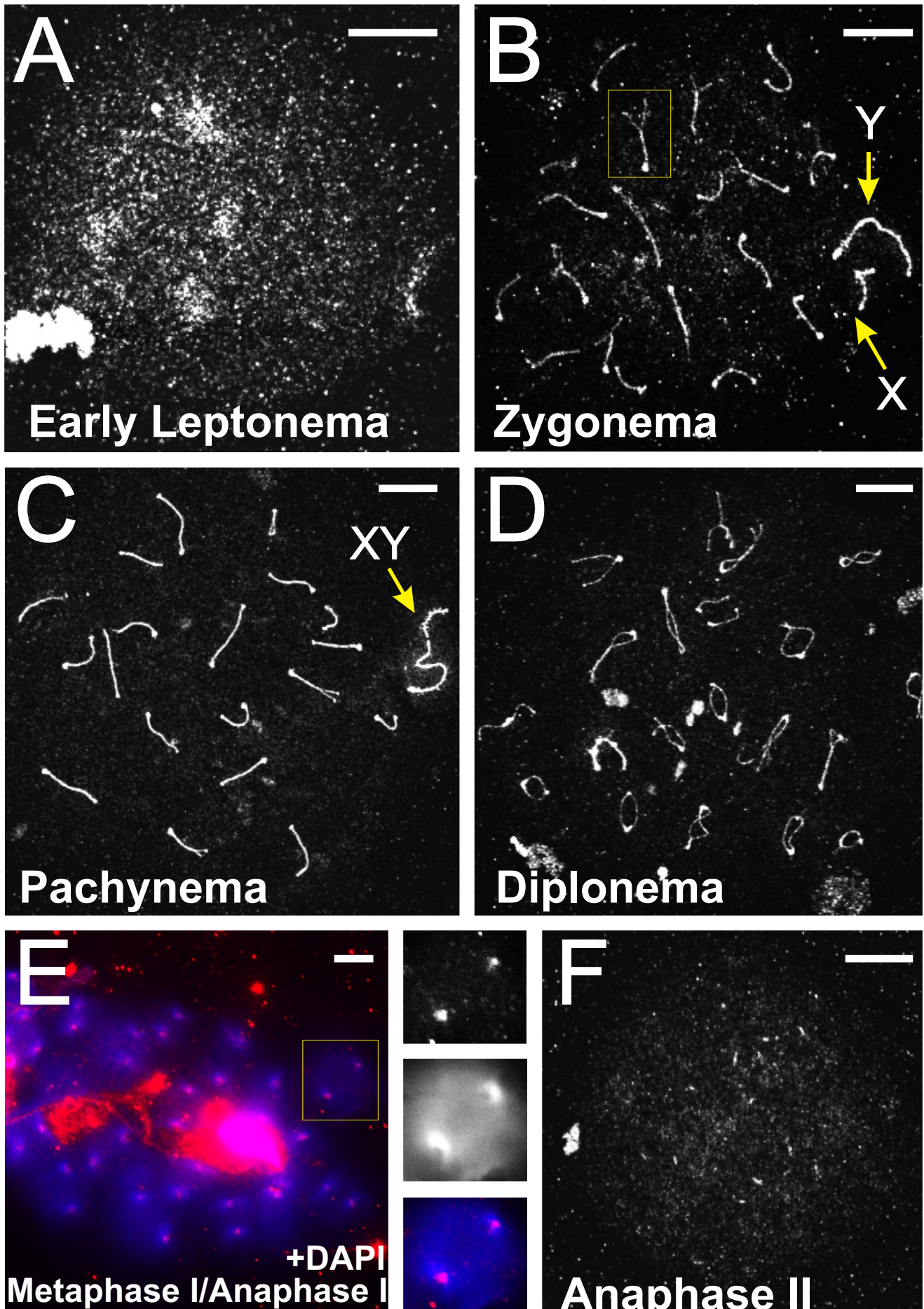


Supplementary Figure 9

Anti-SCC1



Supplementary Fig. 9 | Single labelling of spermatocyte chromosome spreads using anti-SCC1 antibody. Anti-SCC1 antibody described by Weizenegger *et al.* (2000) was used as a positive control for our two antibodies. The staining pattern of this antibody was identical to both our antibodies in all meiotic stages examined. Representative stages are shown in temporal order. (A) Early leptotema. (B) Zygotema, showing the signal in both unsynapsed and synapsed regions of homologous chromosomes (boxed). (C) Pachytoma. (D) Diplotema. (E) Metaphase I/anaphase I, with DAPI counter stain. (F) Anaphase II. Bar = 10 μm .