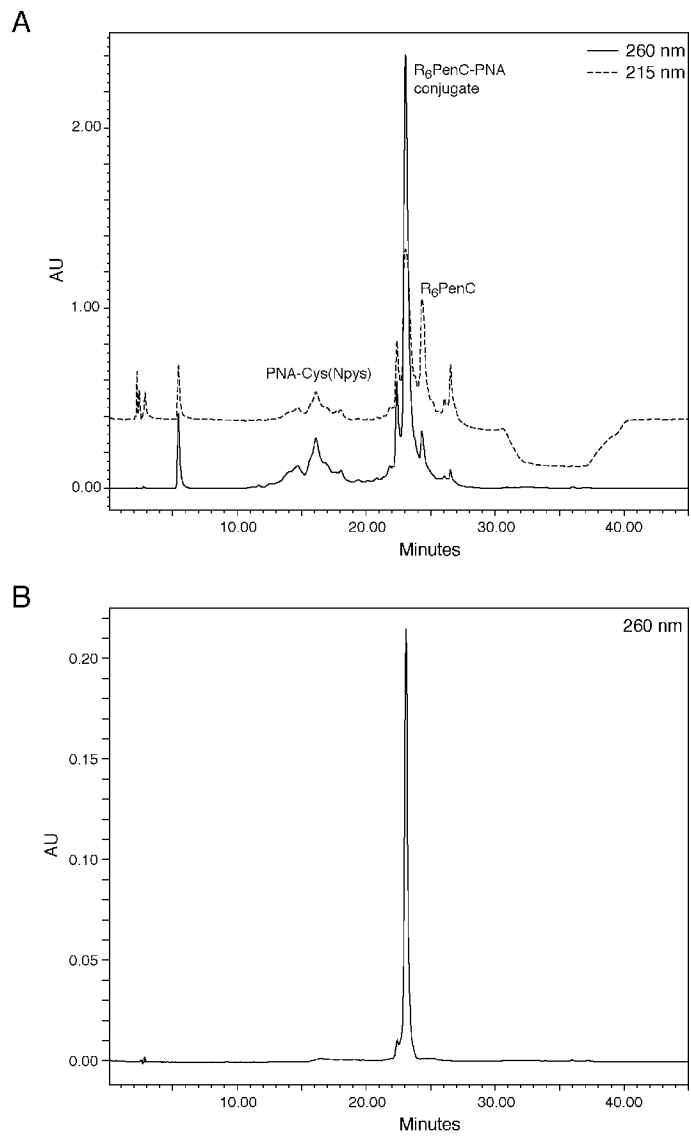
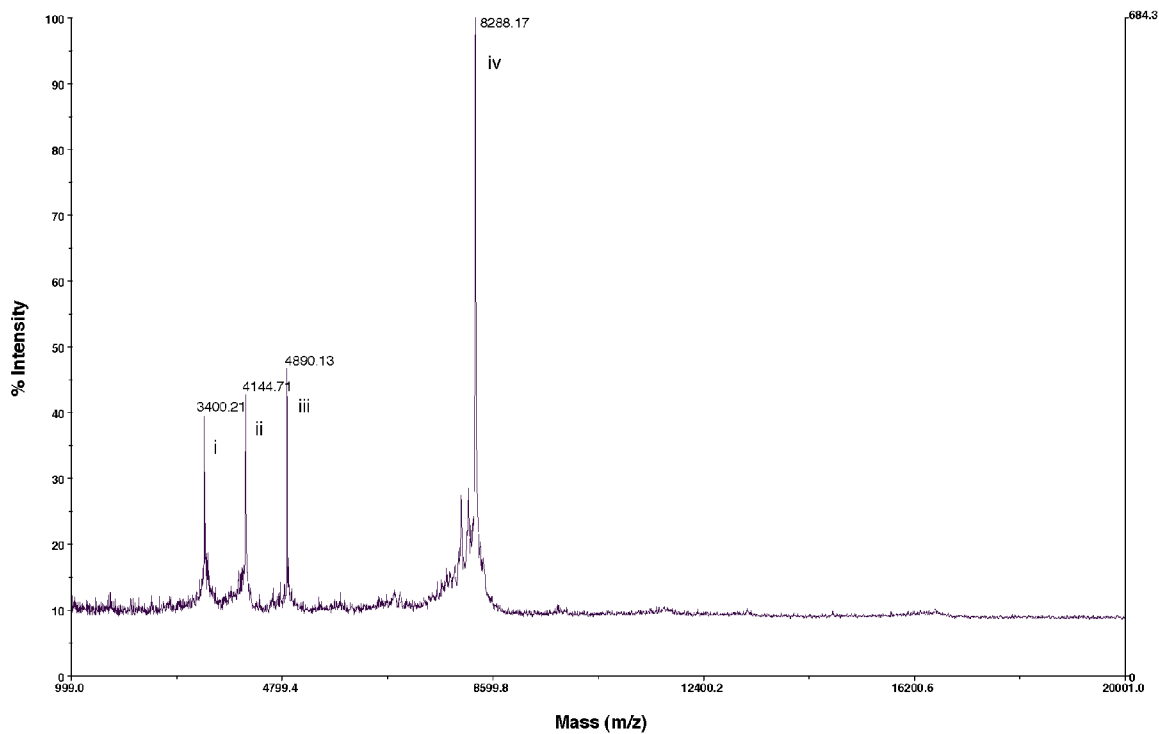


## SUPPLEMENTARY DATA



**Figure 1.** RP-HPLCs of the synthesis of **13** (A) and analysis of the purified product. (B).



**Figure 2.** MALDI spectrum of purified conjugate **13**. (i) Peptide R<sub>6</sub>PenC fragment. (ii) Conjugate **13**/2. (iii) PNA thiol fragment. (iv) Conjugate **13**. Conjugate is not contaminated by PNA thiol or R<sub>6</sub>PenC (see Figure 1) but fragmented upon acquisition of mass. This is seen with all purified disulfide linked PNA-peptide conjugates. Higher laser power results in further fragmentation.