

Low-resolution reconstruction of a synthetic DNA Holliday junction -

Nöllmann, M., Byron, O. and Stark, M.

Supplementary material

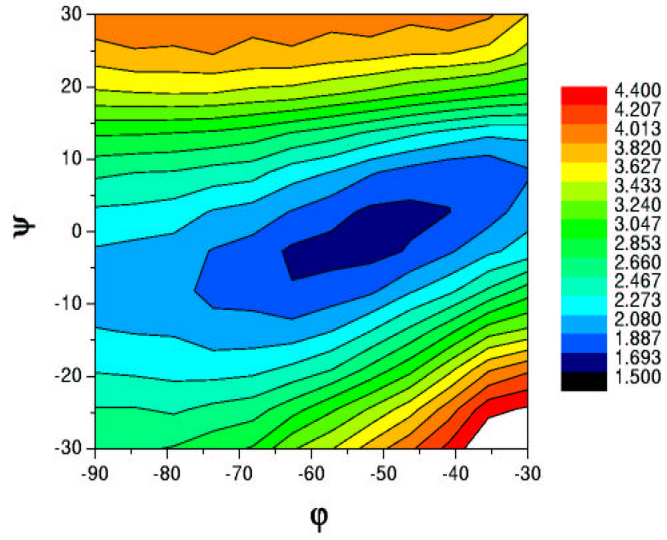


Figure 1: Contour plot of Ξ as a function of the angles ψ and φ for the 10 mM Mg^{2+} sample data analysed with the stacked model, with the distance between arms fixed at $d = 17.5 \text{ \AA}$.

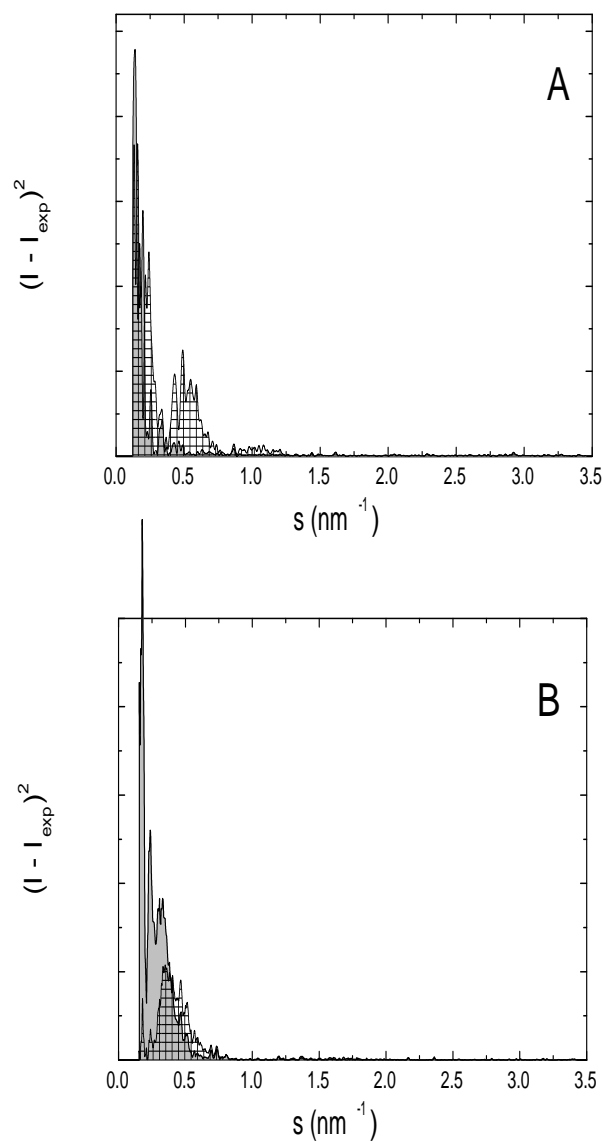


Figure 2: (A) The square of the difference between the experimental data for the 0 mM Mg^{2+} sample and the best fits obtained by using the square planar (*grey shadowing*) and the stacked (*grid pattern*) models. The square planar model shows a smaller integral, and thus fits the experimental data better than the stacked model. (B) The square of the difference between the experimental data for the 10 mM Mg^{2+} sample and the best fits obtained by using the square planar (*grey shadowing*) and the stacked (*grid pattern*) models. The square planar model displays now a larger integral, and thus the stacked model produces a better fit to the 10 mM Mg^{2+} sample experimental data.