

**A**

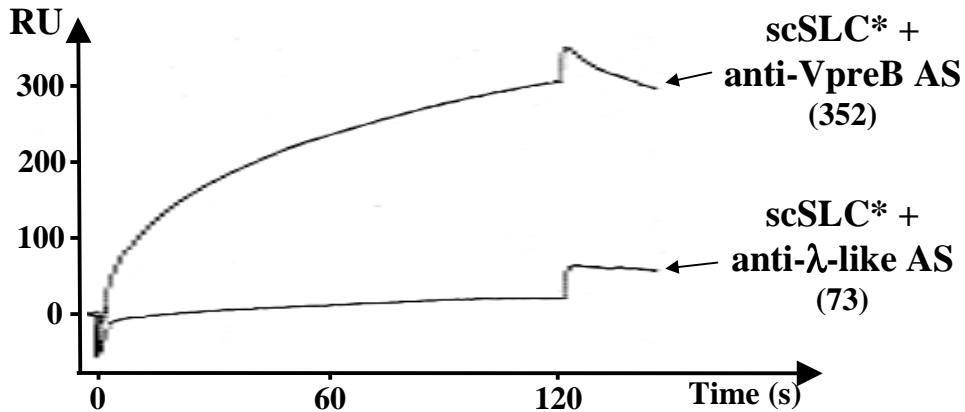
Soluble analyte		$k_{on}$ ( $10^4 \text{ M}^{-1} \text{ s}^{-1}$ )	$k_{off}$ ( $10^{-3} \text{ s}^{-1}$ )	$K_a$ ( $10^6 \text{ M}^{-1}$ )
scSLC*	Kinetic study <sup>k</sup>	$5.23 \pm 0.67$	$17.50 \pm 4.95$	$3.12 \pm 1.26^a$
	Equilibrium study <sup>#</sup>			$2.34 \pm 0.95^b$
$\lambda$ -like	Kinetic study <sup>k</sup>	$1.60 \pm 0.39$	$12.00 \pm 2.65$	$1.29 \pm 0.14^a$

$k_{on}$  and  $k_{off}$  : association and dissociation rate constant, respectively.

$K_a^a$  and  $K_a^b$  : apparent affinity constant calculated from the  $k_{on}/k_{off}$  ratio and the  $Req/C=f(Req)$  plot, respectively.

<sup>k</sup> Values obtained for the kinetic studies are representative of 2 and 3 independent experiments for the scSLC\* and  $\lambda$ -like, respectively.

<sup>#</sup> Values obtained for the equilibrium studies are representative of 3 independent experiments.

**B****C**