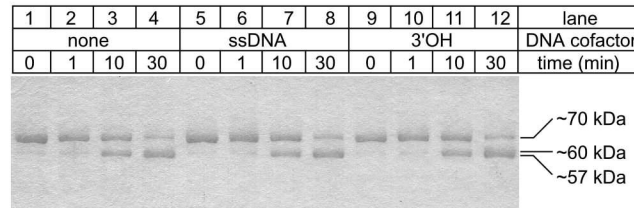


Supplementary Figure 1.

A.



B.



Supplementary Figure 1. Limited proteolysis of *E. coli* RecQ and the R192L aromatic-rich loop variant. Purified WT (**A**) or R159L (**B**) RecQ (3.5 μ M) was treated with 0.035 μ M trypsin as described in Materials and Methods, quenched at indicated times, separated by SDS-PAGE, and stained with Coomassie Brilliant Blue. Indicated reactions contained ssDNA or 3'OH DNA. Aliquots of WT or R159L RecQ prior to the addition of protease are shown (lanes 1), as are aliquots of WT or R159L RecQ after addition of DNA cofactor but prior to protease addition (lanes 5 and 9). Molecular weight estimates derived from marker proteins are indicated. Results shown are representative of limited proteolysis experiments done with WT, W154L, F158L, R159L variants in the presence of ADP, AMPPNP, ssDNA, or 3'OH DNA with subtilisin, chymotrypsin, or trypsin.