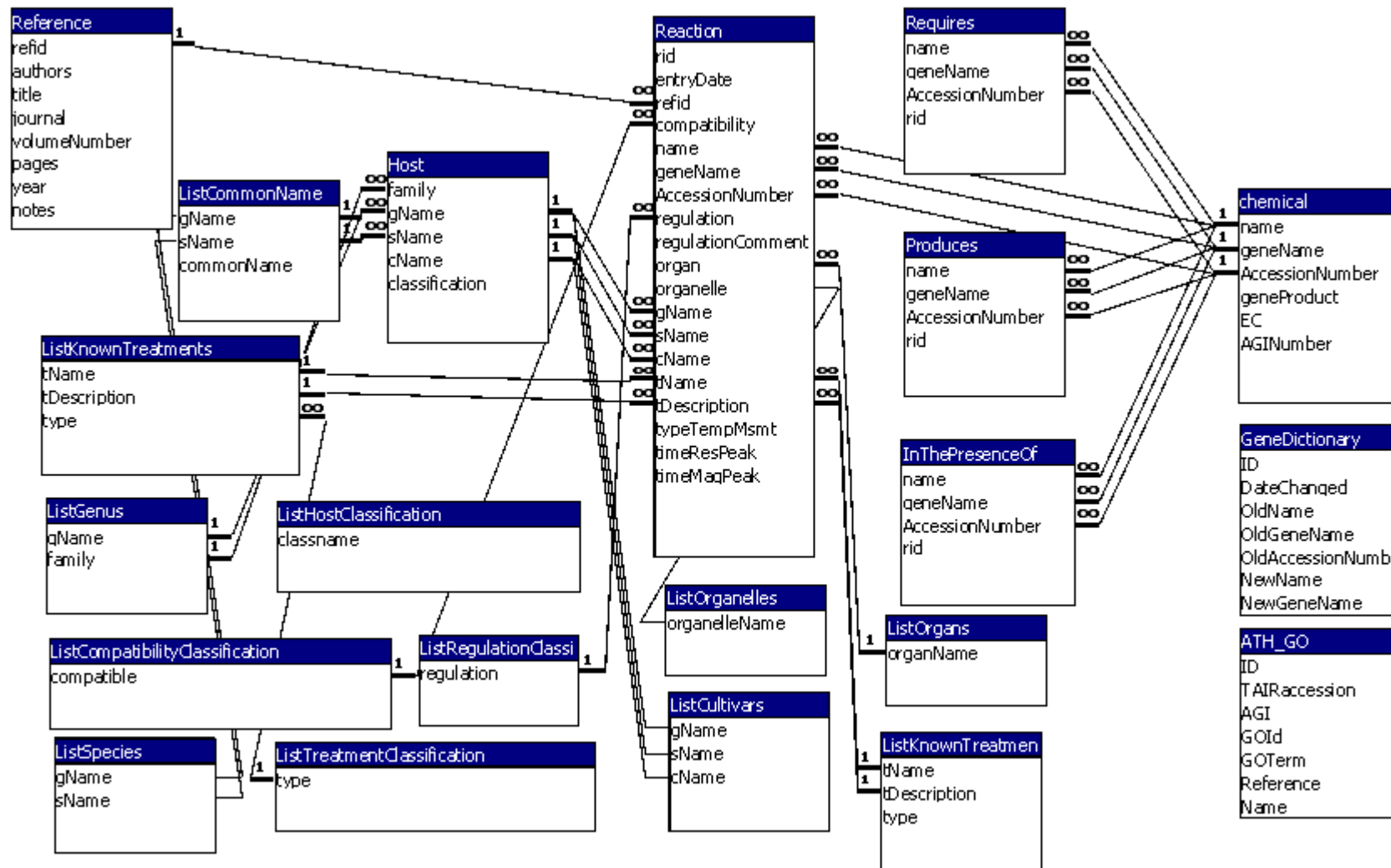


Entity Relationship Model for DRASTIC-INSIGHTS



Explanatory Table Names

Table	Description
ATH_GO	Contains the Gene Ontology (GO) terms for all the Arabidopsis Gene Index (AGI) numbers
Chemical	Details of all genes in the database
GeneDictionary	All updates made to the name, geneName or AccessionNumber attributes are stored
Host	Contains all the plant details including genus, species and cultivar
InThePresenceOf	InThePresenceOf, Produces and Requires contain chemicals which model a protein-protein reaction
ListCommonName	Taxonomic records of the common name for each host
ListCompatibilityClassification	List table that stores all the compatibility classifications
ListCultivars	Taxonomic records of all the host cultivars
ListGenus	Taxonomic records of all the host genera
ListHostClassification	Taxonomic classification of the host e.g. plant-dicot
ListKnownTreatments	List table of all treatments
ListOrganelles	List table of all organelles
ListOrgans	List table of all organs
ListRegulationClassification	List table of all regulation classifications
ListSpecies	Taxonomic records of all the host species
ListTreatmentClassification	List table of treatment classification
Produces	InThePresenceOf, Produces and Requires contain chemicals which model a protein-protein reaction
Reaction	This contains all the gene expression records. Each record is comprised of expression data for a single gene.
Reference	This table contains the full details of each refereed paper that has been used to populate the database.
Requires	InThePresenceOf, Produces and Requires contain chemicals which model a protein-protein reaction

Explanatory Attribute Names ¹

Attribute	Description	Example
AccessionNumber	Contains the gene sequence entry number in EMBL format (where available).	AY271618
AGINumber	Arabidopsis Gene Index (AGI) number (only applicable to <i>Arabidopsis thaliana</i>).	At5g03650
compatibility	Certain treatment x host combinations can be classified as compatible or incompatible. This is true for all cases where the treatment is a pathogen.	compatible
classification	Defines the taxonomic classification of the host.	Plant-dicot
cName	Cultivar Name	cv Columbia
EC	Enzyme nomenclature	2.4.1.18
family	Defines the taxonomic family of the host.	Brassicaceae
geneProduct	States whether a chemical is a gene product	Yes/No
gName	Genus Name	Arabidopsis
geneName	Published or preferred symbolic name of a gene	ALDH7B4
name	A description of the gene function	aldehyde dehydrogenase
refid	The identity number of the reference where the gene expression record is cited	Auto Number
regulation	In the case of a gene being expressed this attribute indicates whether it is up or down regulated.	Up
rid	The unique identity number of the record	Auto Number
sName	Species Name	thaliana
tDescription	Treatment Description	isolate O-264
tName	Treatment Name	Alternaria brassicicola
timeMagPeak	Provides a summary of the scale of response	4 Fold
timeResPeak	Provides a summary of the timing of response	3 Hours
type	Treatment Type	Abiotic
typeTempMsmt	If temporal data is available then this indicates what type of data available	

¹: The above table does not include attributes such as Year or Author as these are self-explanatory.