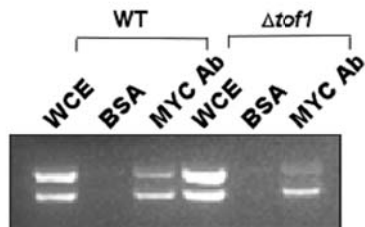


A.**B.**

Sample Name	Input DNA Mean Ct	BSA, Mean Ct	Imm.PPT. Mean Ct
WT (Fob- myc)	22.37 ± 0.04	25.17 ± 0.09	19.33 ± 0.32
$\Delta tof1$ (Fob- myc)	22.52 ± 0.09	24.41 ± 0.08	17.83 ± 0.60