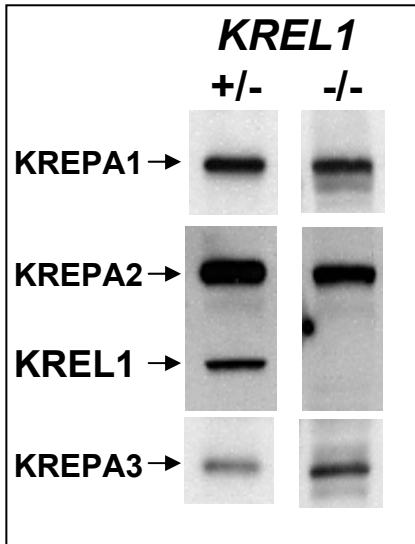
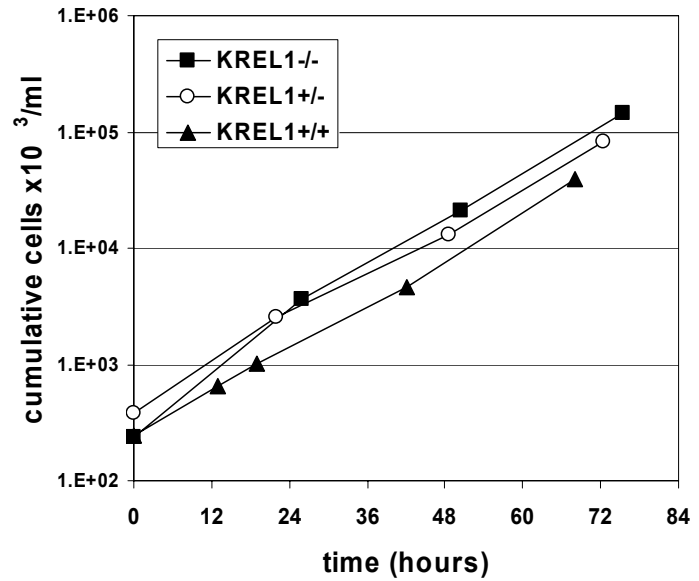


A**B**

Supplementary Figure S1 The normally essential RNA editing ligase 1 (KREL1) is not required in the Dk trypanosome *T. evansi* Antat 3/3. **(A)** Western blot analysis of *T. evansi* KREL1^{+/-} and KREL1^{-/-} cells. Cell lysates were fractionated by SDS-PAGE, transferred to PVDF membrane, and probed with monoclonal antibodies against four components of the mitochondrial RNA editing complex. **(B)** Growth comparison. Cells were maintained in the exponential growth phase and cumulative cell numbers reflect normalization for dilution during cultivation.