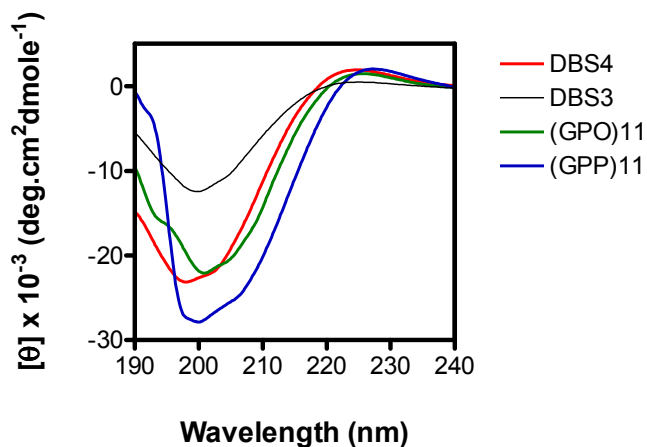


Supplement Materials.

Table 1. List of Oligonucleotides used for the generation of different CNA constructs

Name	Sequence (5' – 3')
CNA ₃₁ 5'	GAAGGATCCGCACGAGATATTTTCATCAAC
CNA ₅₃₁ 3'	GTTGTCGACTTATGGTTTTTCAGTATTAGTAAC
CNA ₁₅₁ 5'	GAAGGATCCATAACATCTGGGAATAAATC
CNA ₁₄₁ 5'	GAAGGATCCACAAATACTTCAGATGACAAAG
CNA ₃₄₄ 3'	GTTGTCGACTTAAGCCTTGGTATCTTTATCCTG
CNA ₃₁₈ 3'	GTTGTCGACTCAATTGTGCACAGTATG
CNA ₁₅₆ 3'	GTTGTCGACTTATTTATTCCCAGATGTTAT
CNA ₃₁₉ 5'	CACGGATCCATTAATGCTAATGCCGGTATT

Supplement figure 1. Circular dichroism analysis of synthetic collagen peptides.



Supplement figure 2. CNA₃₁₋₃₄₄ dissolved from crystals has reduced a binding affinity for collagen. Biacore sensorgrams of different CNA samples at 0.1 μM (panel A) and 1 μM (panel B) over a type I collagen coated surface. Responses from a blank surface were subtracted.

