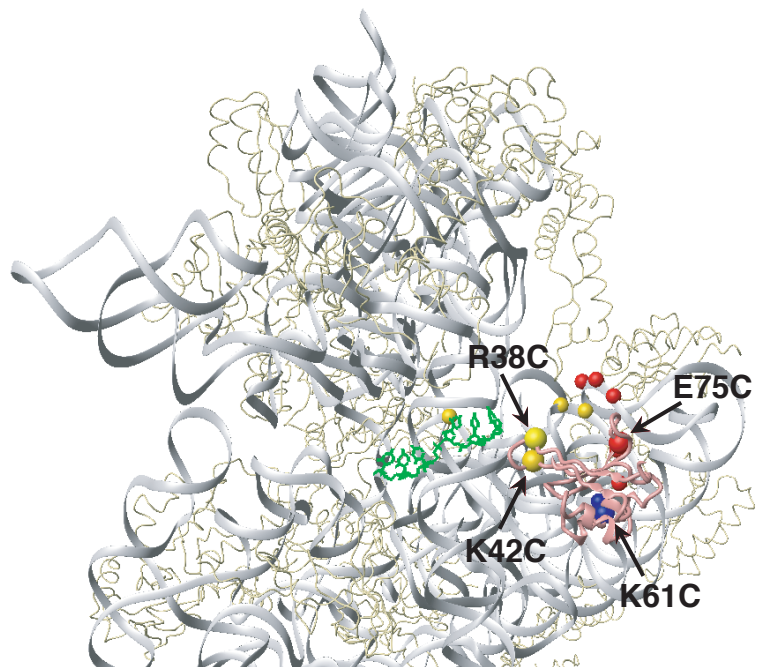
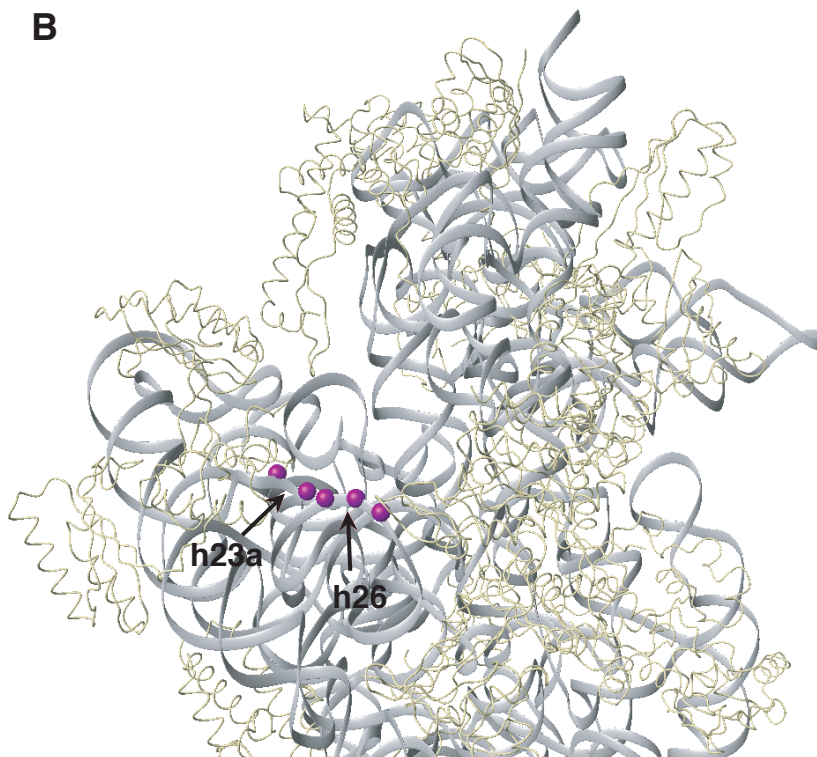


A



B



Supplementary data

Supplementary Figure 1. Cleavage sites in *E.coli* 16S rRNA and eIF1's position on the 40S subunit modeled onto the *T. thermophilus* 30S subunit. (A) Intersubunit and (B) solvent side views. eIF1 shown as a coral ribbon with colored spheres representing cysteines as in Fig. 2A. Colors of 16S rRNA cleavage sites (shown in spheres) on the intersubunit side correspond to colors of cysteines from which hydroxyl radical cleavage occurred. Cleavage sites on the solvent side are shown in purple. 16S rRNA is gray, mRNA in A and P sites is green, and ribosomal proteins are light yellow.