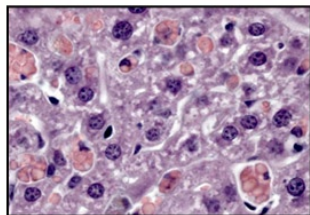
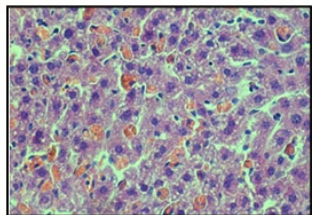
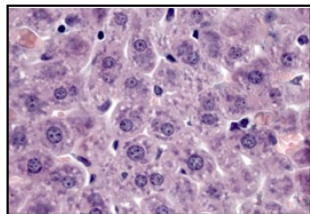
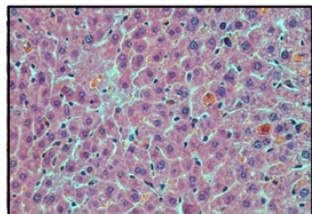


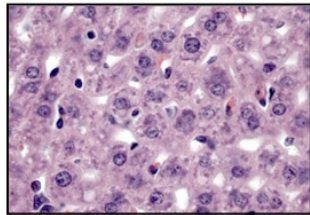
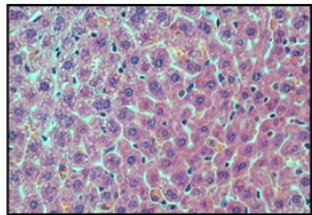
34-3C mAb (300 μ g)



WT



C5aR^{-/-}



Fc γ RI/RII^{-/-}

40X

100X

SUPPLEMENTARY FIGURE LEGENDS

Suppl.-Figure 1: Histopathology from anemic WT, C5aR^{-/-} and FcγRI/III^{-/-} mice.

Representative histological appearance of liver from the indicated mice on day 2 after induction of anemia by the injection of 300μg of the pathogenic IgG2a 34-3C anti-RBC mAb (hematoxylin and eosin stained; original magnifications: 40x, 100x).