

Figure 1S. LC-ESI-MS analysis of the HPLC-generated fraction I from the corpora cardiaca of *T. fascicularis*

(A) The total ion chromatogram is shown. Gradient elution was from 28 to 50 % B (solvent A: 0.04 % TFA in water; solvent B: 0.04 % TFA in acetonitrile) within 8 min on a RP-C8 Symmetry column (150 x 1 mm ID) with a flow rate of 50 $\mu\text{l min}^{-1}$.

(B) The full scan ESI mass spectrum of the peak with the retention time of 2.3 min in (A) is shown, depicting MH^+ at m/z 1012.4.

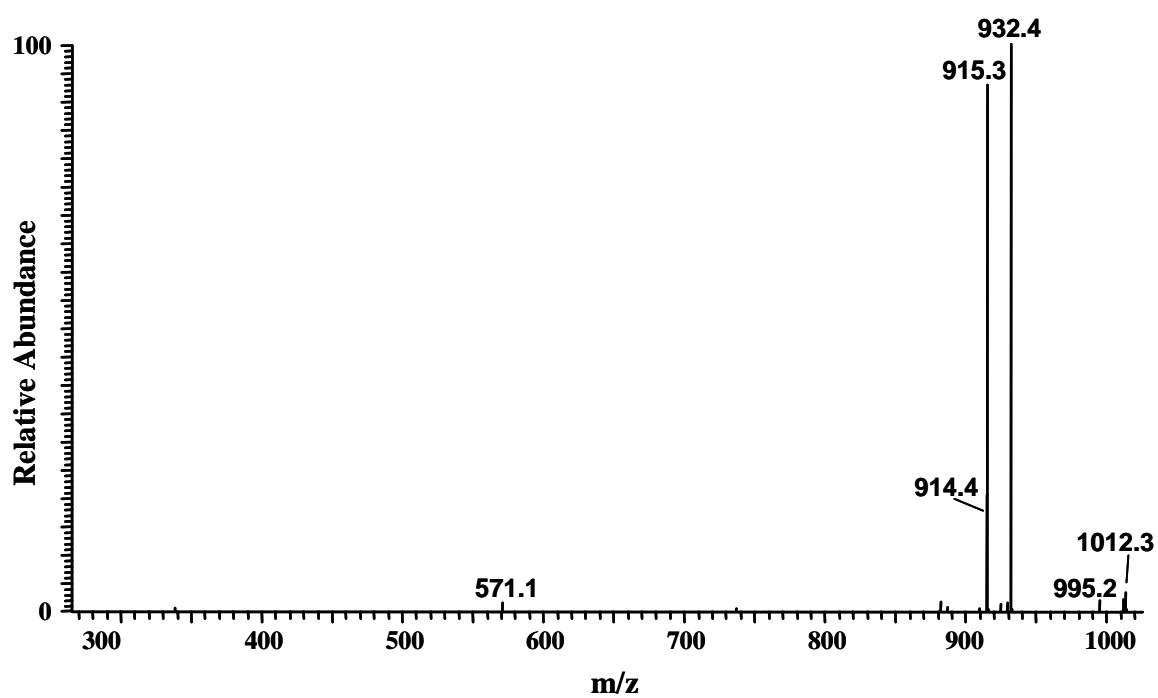


Figure 2S. The CID ESI-MS² spectrum of the ion MH⁺ ($m/z = 1012.4$)

The inset shows the sequence of the assigned peptide, denoted Trifa-CC, together with the theoretical calculated masses for these diagnostic ions, which were observed in the MS^N mass spectra.