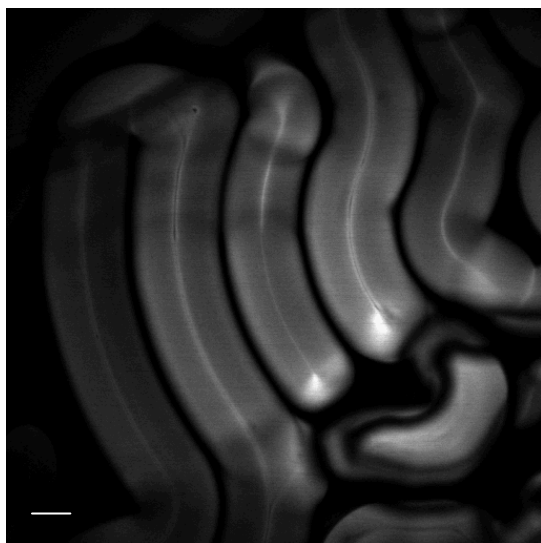
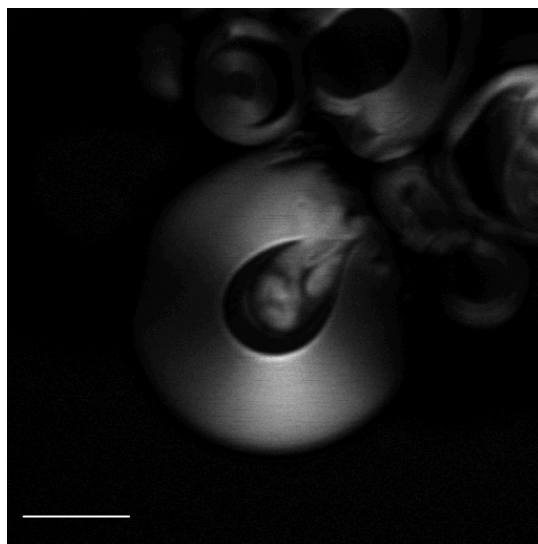


Fig. S1(A-C) F-CARS images of myelin figures formed of DOPC, DPPC, or DPPC / cholesterol (40% in weight). was tuned to 2840 cm^{-1} . Bar = $10\ \mu\text{m}$. (D) The average values of $I_{\parallel} / I_{\perp}$ are 1.48, 4.44, 6.21 for DOPC, DPPC/cholesterol, and DPPC myelin figures, respectively. I_{\parallel} and I_{\perp} are CARS intensities from different parts of the myelin tip where the bilayer plane is parallel with and perpendicular to the excitation polarization, respectively.

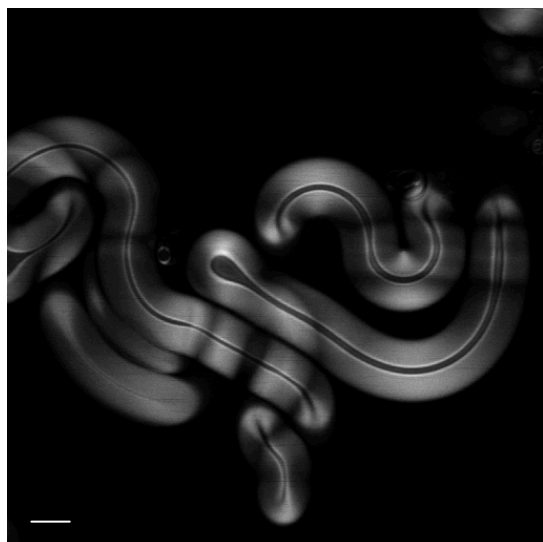
(A) DOPC (L_d)



(B) DPPC (S_o)



(C) DPPC+40%chol (L_o)



(D)

