

Supplementary Figure 1

(A) Bar graph showing the mean number of BrdU-positive and TUNEL-positive cells counted per retinal section (n=9 eyes) in wildtypes and in *shh* mutants.

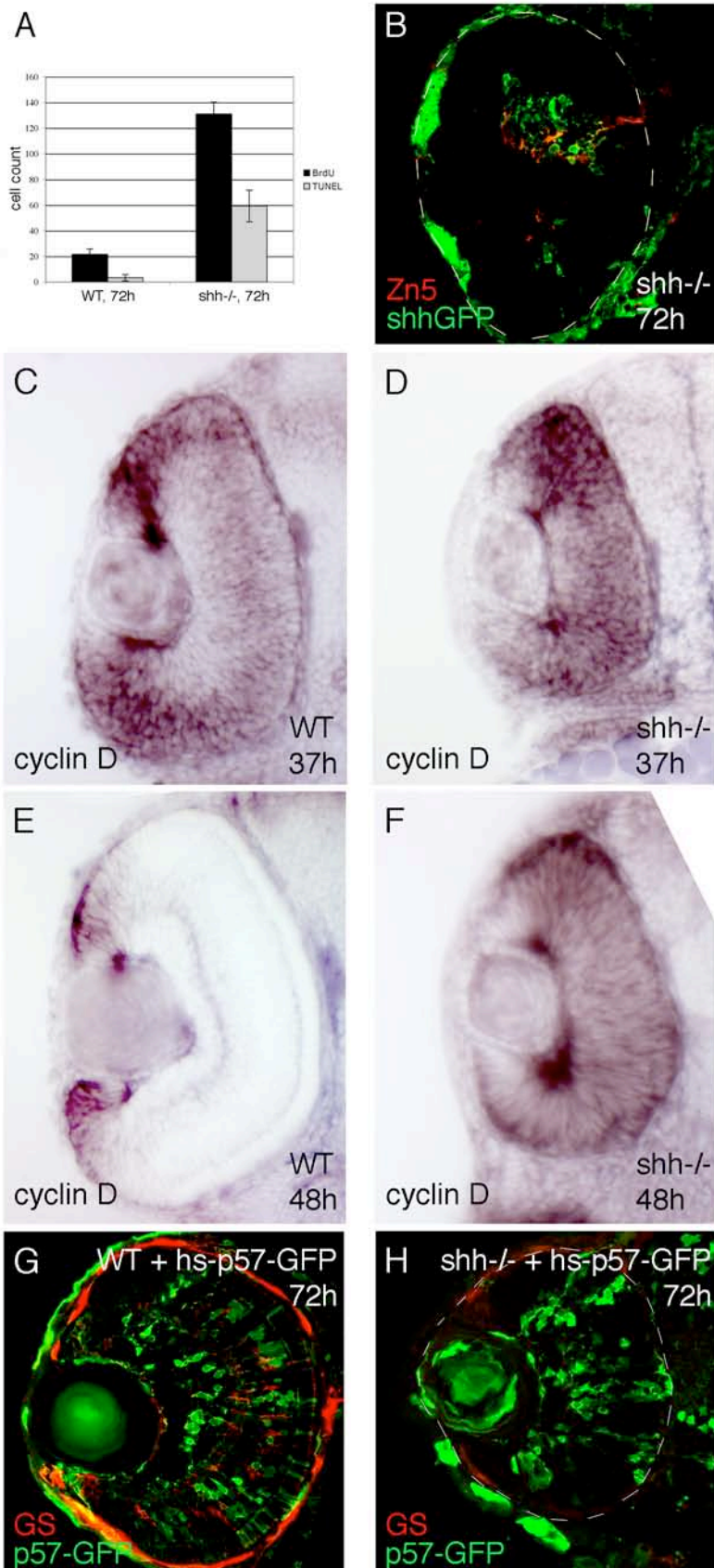
(B) Confocal sections through the *shh*^{-/-} retina at 72 hpf (anterior to the top). Zn5 (red) labels RGCs expressing also the Shh-GFP reporter (green).

(C-F) A time course of *cyclin D1* expression in wildtype and *shh* mutants. Shown are whole-mount *in situ* hybridization analyses (anterior to the top).

(C) At 37 hpf, *cyclin D1* is expressed at the retinal margin and at a reduced level in the central retina whereas at 48 hpf *cyclin D1* expression was detected at the margin only (E).

(D, F) *shh* mutants fail to downregulate *cyclin D1* expression in the central retina at any stage.

(G-H) Wildtype and *shh*^{-/-} embryos expressing p57Kip2/GFP (green) were stained for glutamine synthetase (GS) (red). *shh* mutants with p57Kip2/GFP expressing cells (green) show no GS-positive Mueller glia cells.



Suppl. Figure